

5, The Grove

Rear Garden - Landscape Design Statement  
August 2021

381-L-X-901 P01

## No 5 The Grove, Introduction

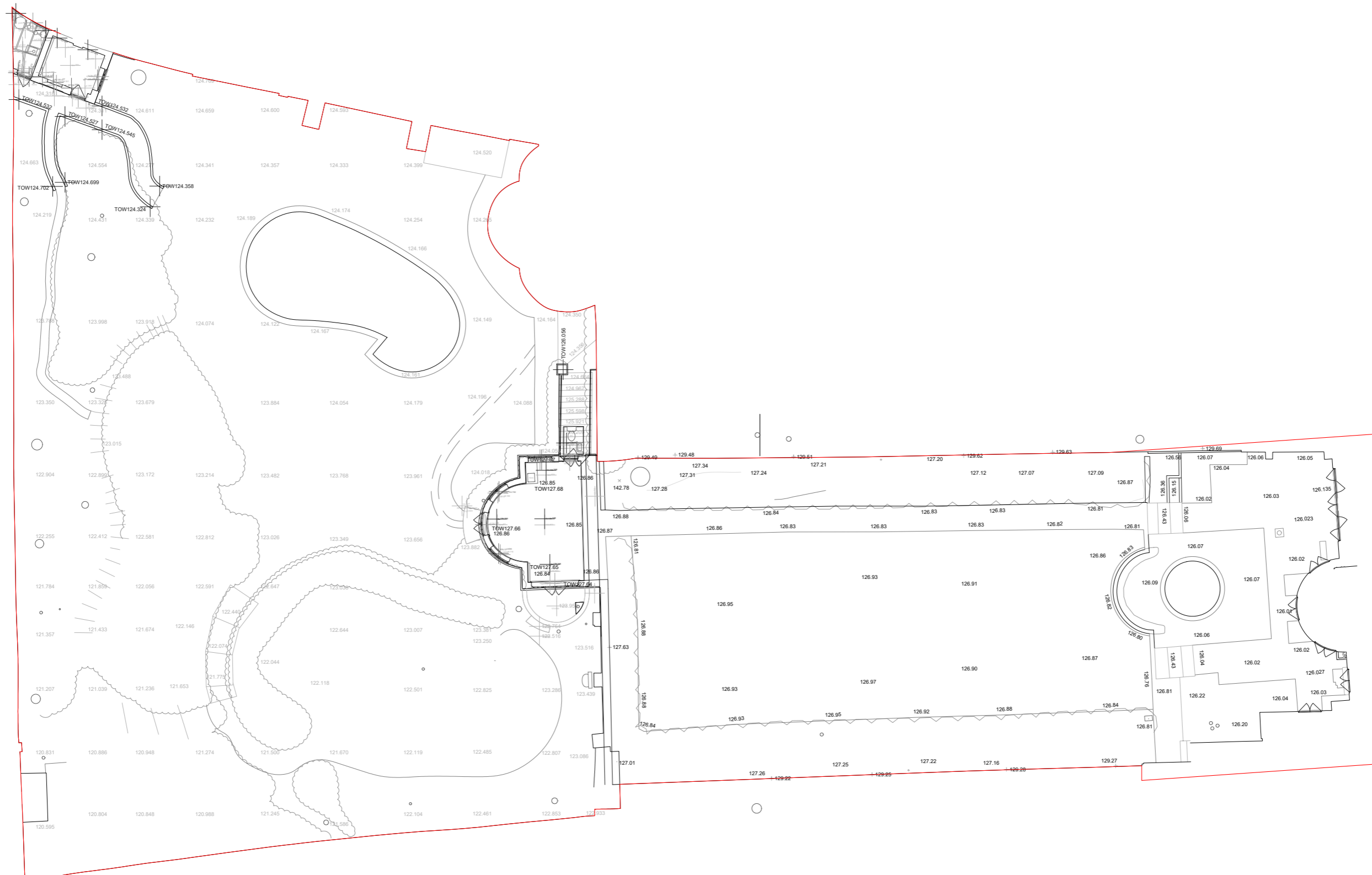
No 5, The Grove is a Grade II listed building located within the Highgate Conservation Area with a rear garden of 0.4 Acres (~1600sqm), split over two levels. The most extraordinary characteristic of the garden at No 5 is the astonishing view west to Hampstead Heath. However, at present, the existing trees along it's boundary are beginning, and in some places have already begun to screen this view. In doing so, the proximity they bear to a large retaining wall on the Western boundary of the garden is endangering the wall. With the framing provided by the grand old Holm Oak within the garden, these proposals look to centre the garden around the preservation of this view.

Though a simplicity of structure in each the upper and lower terraces, and by utilising and protecting the existing Holm Oak and retaining walls within the garden, a picturesque composition is sought.

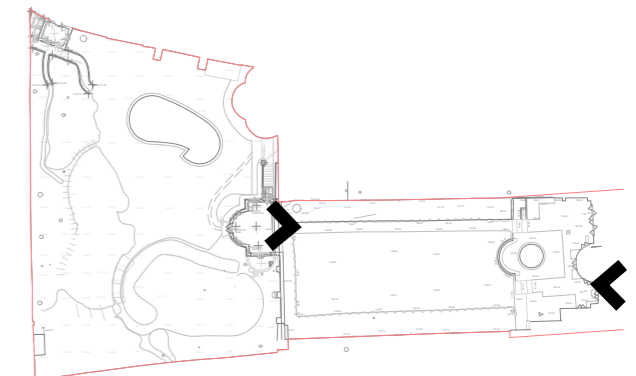
In the upper terrace, an abundant, biodiverse area of planting replaces the existing lawn, with a combination of low clipped yew, low shrubs and flowers with generous borders to either side. The design of the planting here ensures seasonal interest throughout the year.

A reconfigured summerhouse and pool arrangement on the lower terrace readdresses the current layout of dividing hedges and the kidney shaped swimming pool. A new pergola provides a space for shade whilst climbers and small trees provide protection from views from the neighbouring properties.

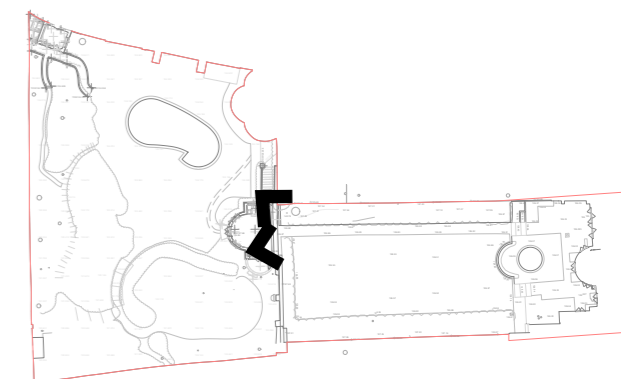
Along the wall to the West of the garden, following the remedial work to the wall, the existing screen is replanted with smaller trees with evergreens dominant. A shady and quiet low-level walk from near the pergola around to the Summerhouse links this lower terrace.



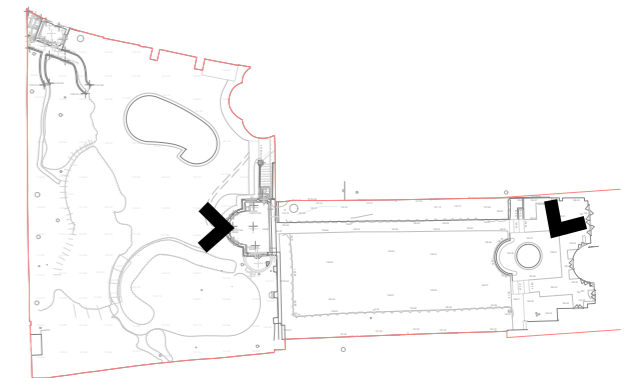
Existing Garden Drawing



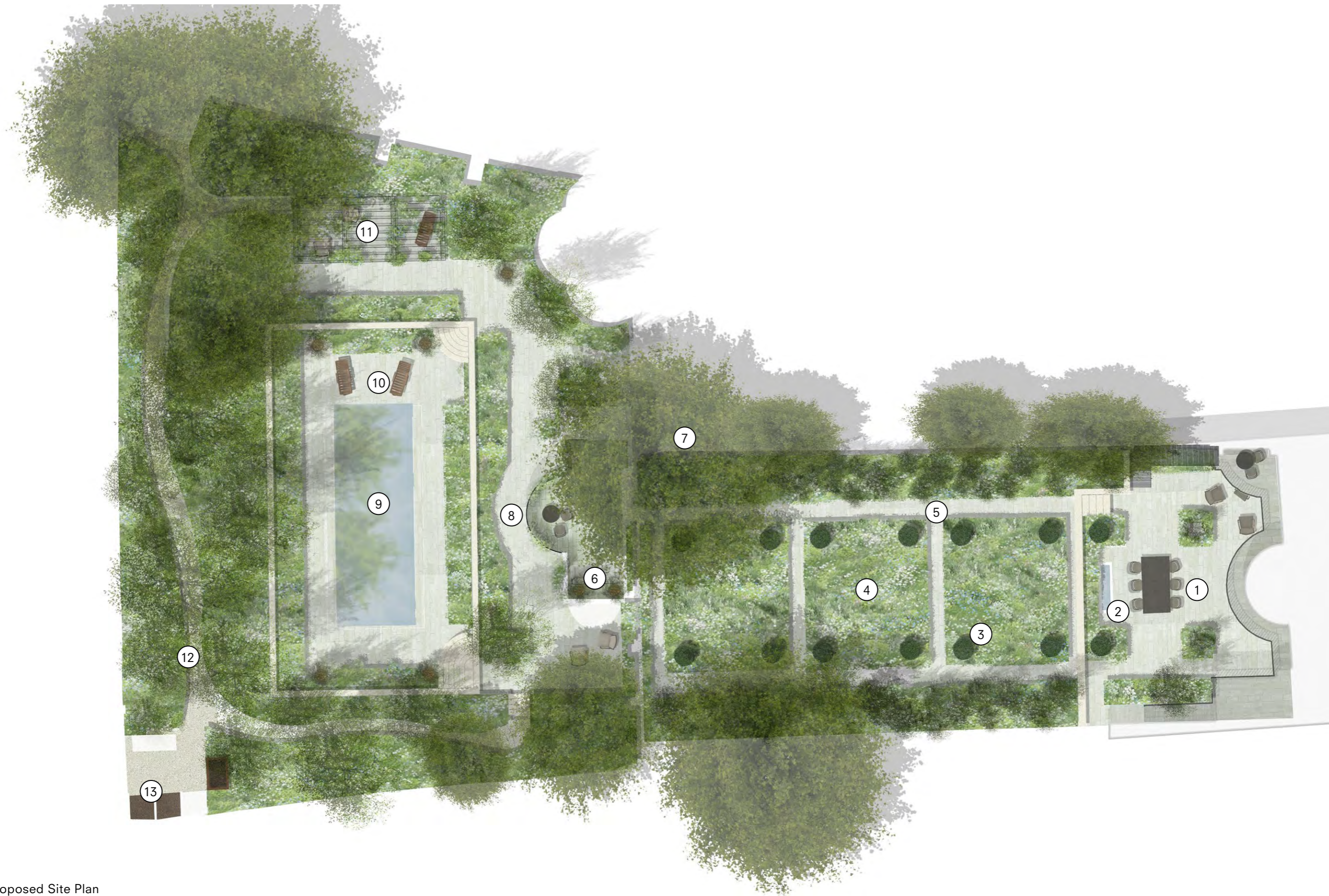
Existing Garden - Photography



Existing Garden - Photography



Existing Garden - Photography

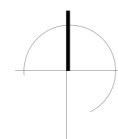


Proposed Site Plan

- 1 House Terrace
- 2 Stone water trough
- 3 Yew mounds
- 4 Upper Terrace Garden
- 5 Stone path

- 6 The Summer House
- 7 Existing Holm Oak
- 8 Summer House Terrace
- 9 Swimming Pool
- 10 Swimming Pool Terrace

- 11 Pergola
- 12 The Woodland Walk
- 13 Works area





Proposed Garden - Aerial view

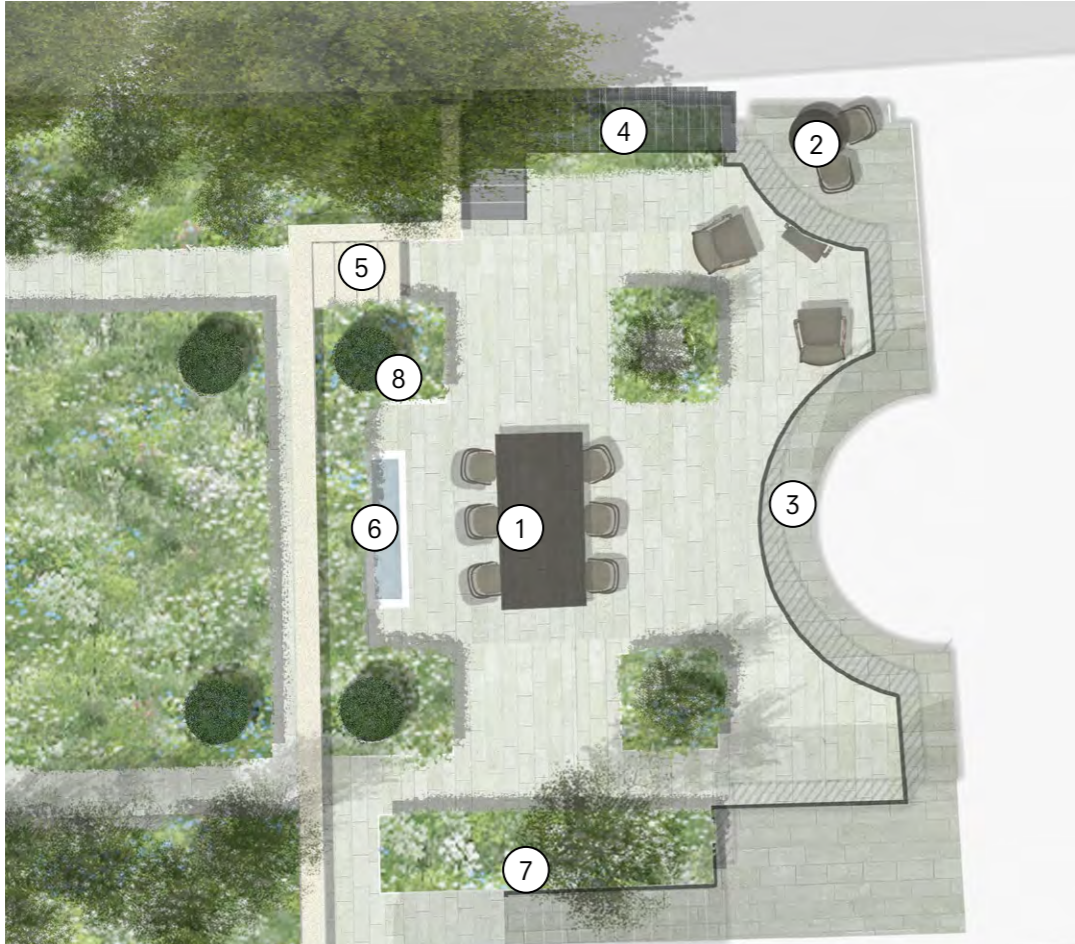




Proposed Garden - View from House Terrace across the Upper Garden Terrace

### The House Terrace and Balcony

The lower ground floor terrace would look to have a close relationship with the adjacent interior spaces, ensuring a cohesive sense of flow between inside and out. Reclaimed Yorkstone paving, or something contiguous with the internal finish, would lead into a simple dining area in a calm, contemporary style. Gently lit, this space of refuge will begin the journey into the wider garden and provides both a transitional space.



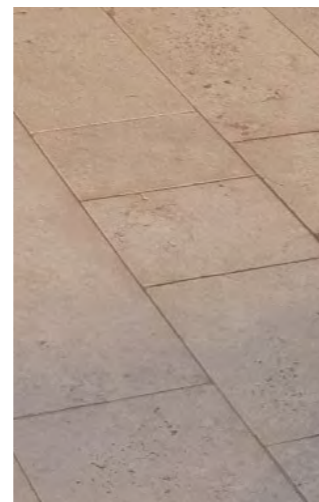
- 1 Dining table
- 2 Balcony seating area
- 3 Balcony; resurfaced and new railing
- 4 Proposed steps
- 5 Yorkstone and creasing tile steps
- 6 Water trough
- 7 Existing Myrtle crown reduced
- 8 Box balls in containers



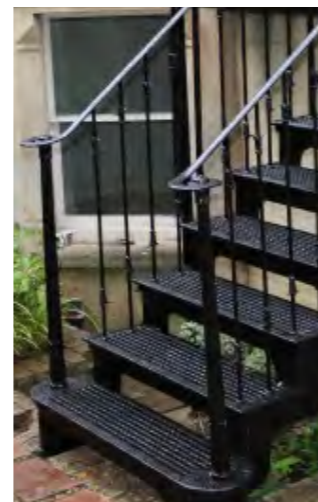
1



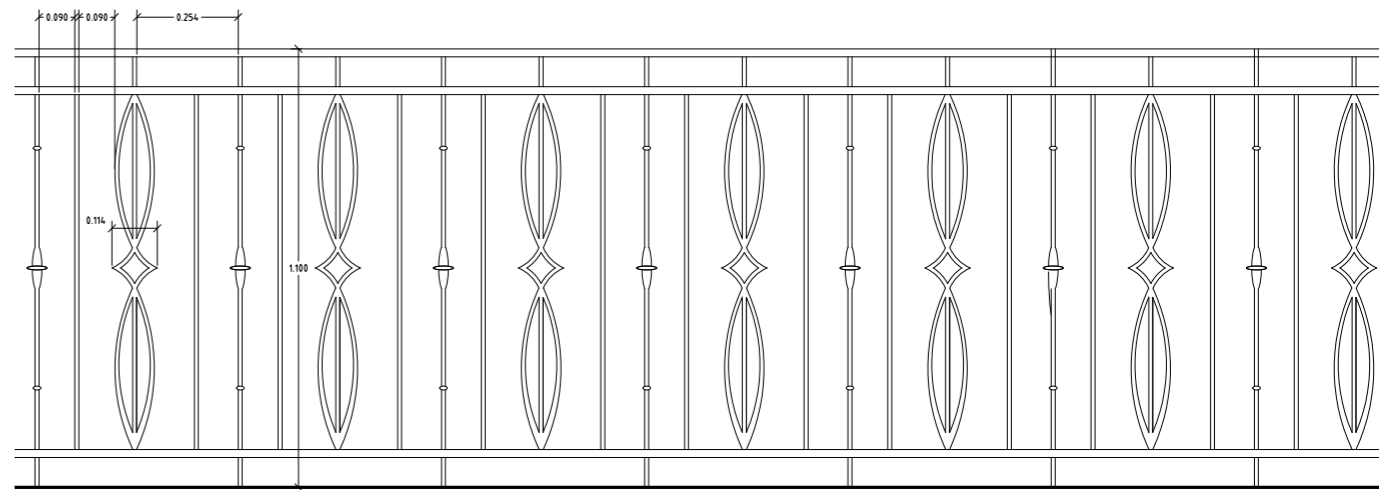
7



8



9



10

Terrace

- 1 Reclaimed Yorkstone paving
- 2 Italian Terrace - Giardino pot 53x50cm
- 3 Italian Terrace - Tinozza pot 65x65cm
- 4 Yorkstone and creasing tile step
- 5 Water trough
- 6 Bonacina - Metal + Weaving

Balcony

- 7 Historic railing design
- 8 Stone finish to match/compliment kitchen
- 9 Decorated metal step precedent
- 10 Proposed stair and balcony railing sketch detail



1



3



4



6



2



8



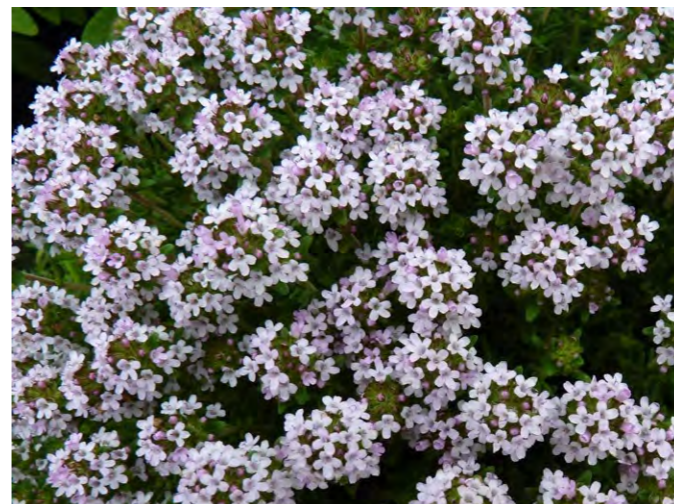
5



10



7



9

Indicative Planting Mix

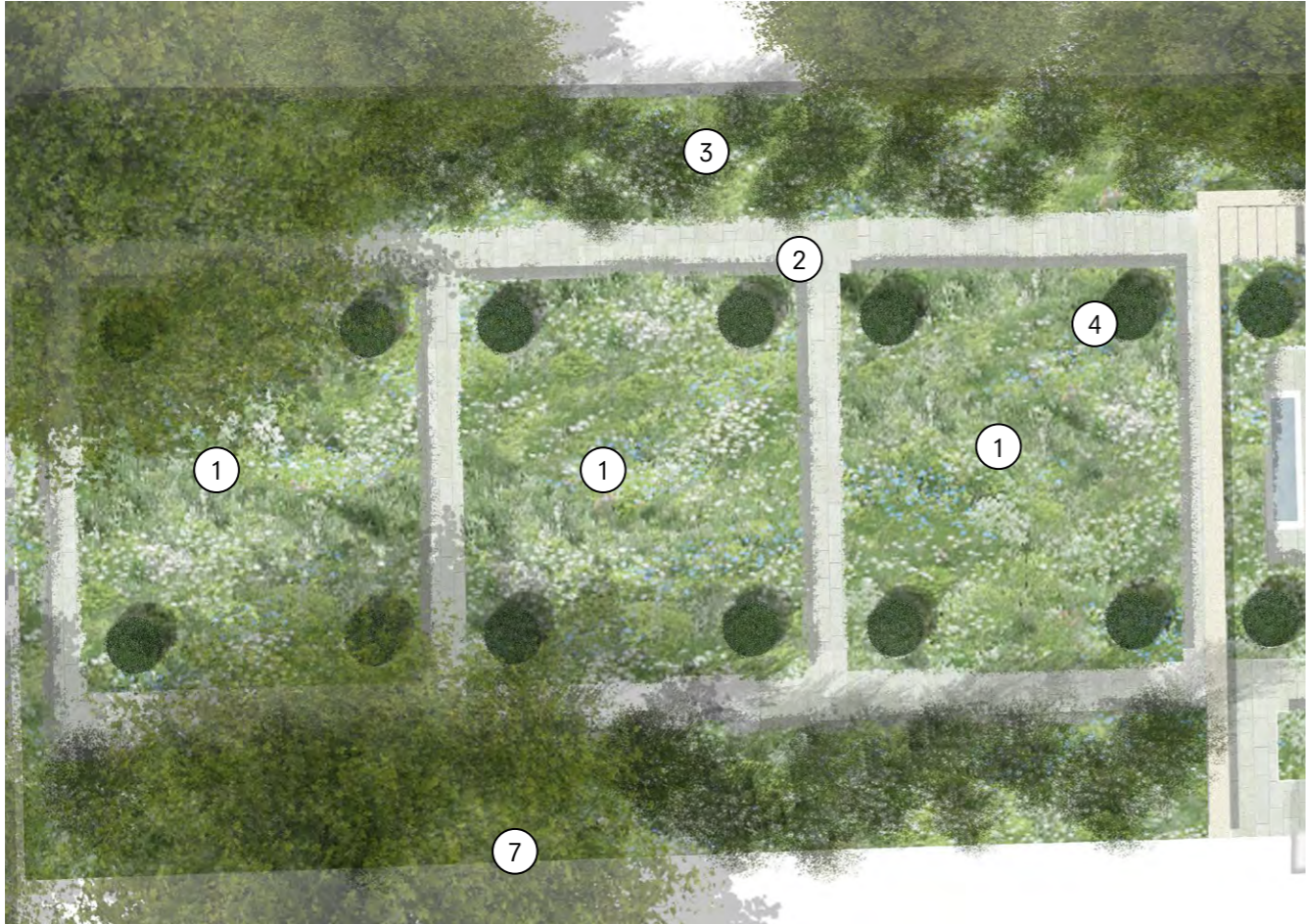
- 1 Cistus skanbergii
- 2 Helleborus orientalis (White)
- 3 Rosa 'Kew Gardens'
- 4 Bupleurum fruticosum
- 5 Hakonechloa macra
- 6 Wisteria sinensis

- 7 Buxus in containers
- 8 Pistacia lentiscus in pots
- 9 Thymus vulgaris
- 10 Lavandula 'Sawyers'

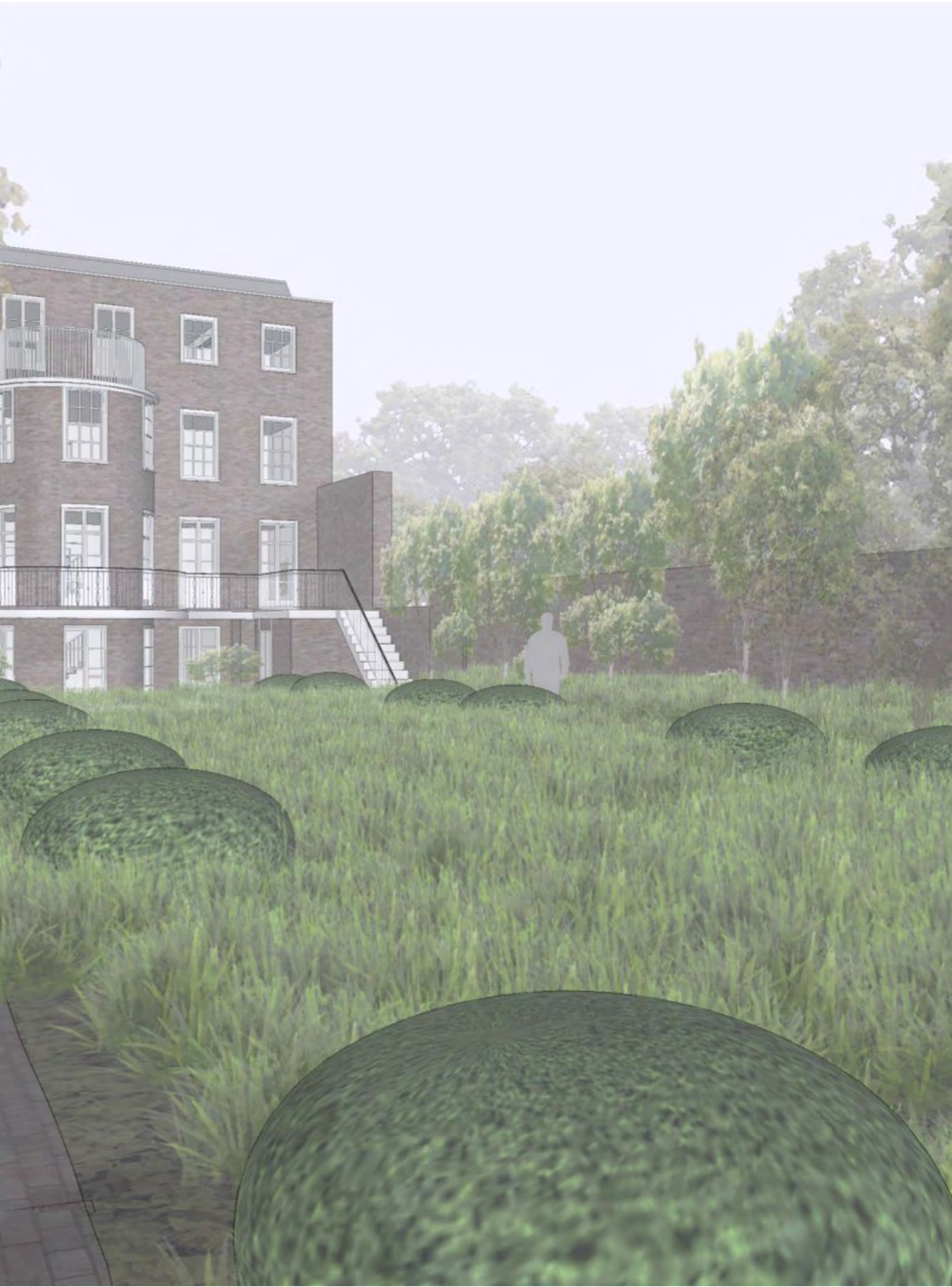
### The Upper Terrace Garden

As the immediate foreground to the view, the lawn is transformed into swathes of low planting to guide the eye to the view beyond. Abundant borders to each wall serve to compress and define this view. Low intensity up lighting to selected trees and subtle downlighters of warm light are proposed to illuminate the paths, which intersect to allow the user to access the planting and give potential for multiple routes through the space.

The far terrace is framed by this space, but also separated from the house by a healthy distance.



- 1 Central beds
- 2 Stone paths
- 3 Long beds
- 4 Yew mounds





1



2



6



3



4



5



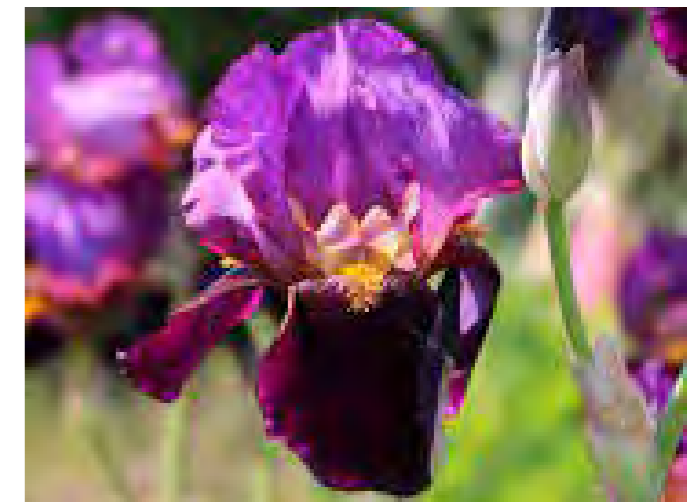
7



8



9



10

Indicative Herbaceous Planting - Main beds

- 1 Taxus domes coming through planting
- 2 Tulbaghia violacea
- 3 Stipa lessingiana
- 4 Salvia 'Dear Anja'
- 5 Aster thomsonii 'Nanus'
- 6 Stipa calamagrostis

- 7 Allium cristophii
- 8 Gypsophila 'Rosenschleier'
- 9 Lomelosia minoana
- 10 Iris 'Benton Storrington'

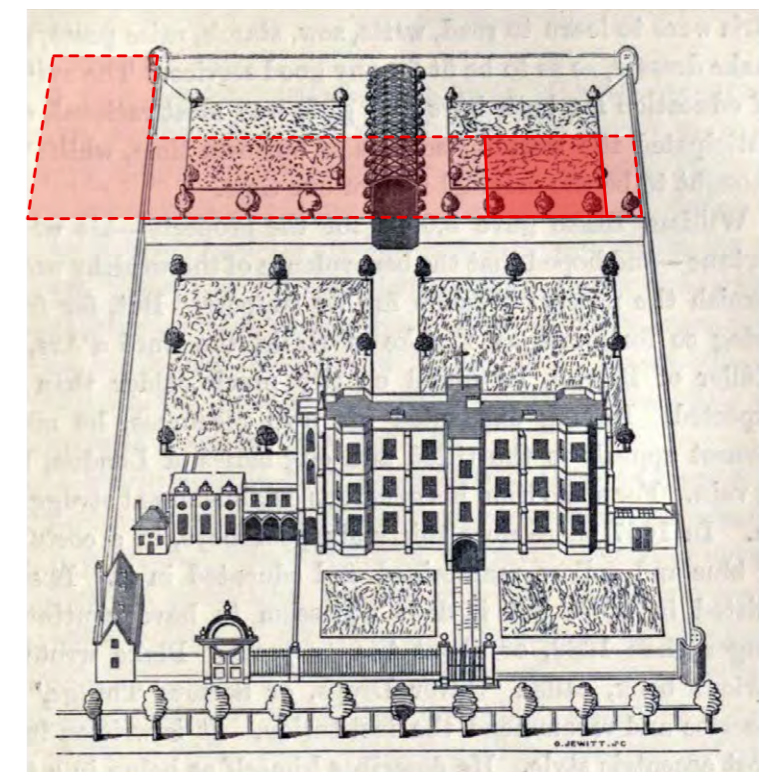
## Summer House and Summer House Terrace

The design for the summer house has been focused upon maximising space in which to entertain. A reconfigured set of steps down slowly reveals the view of the pool and pergola, with a 90 degree landing acting as a small viewing place. This re-configuration allows the bastions and listed wall to breathe.

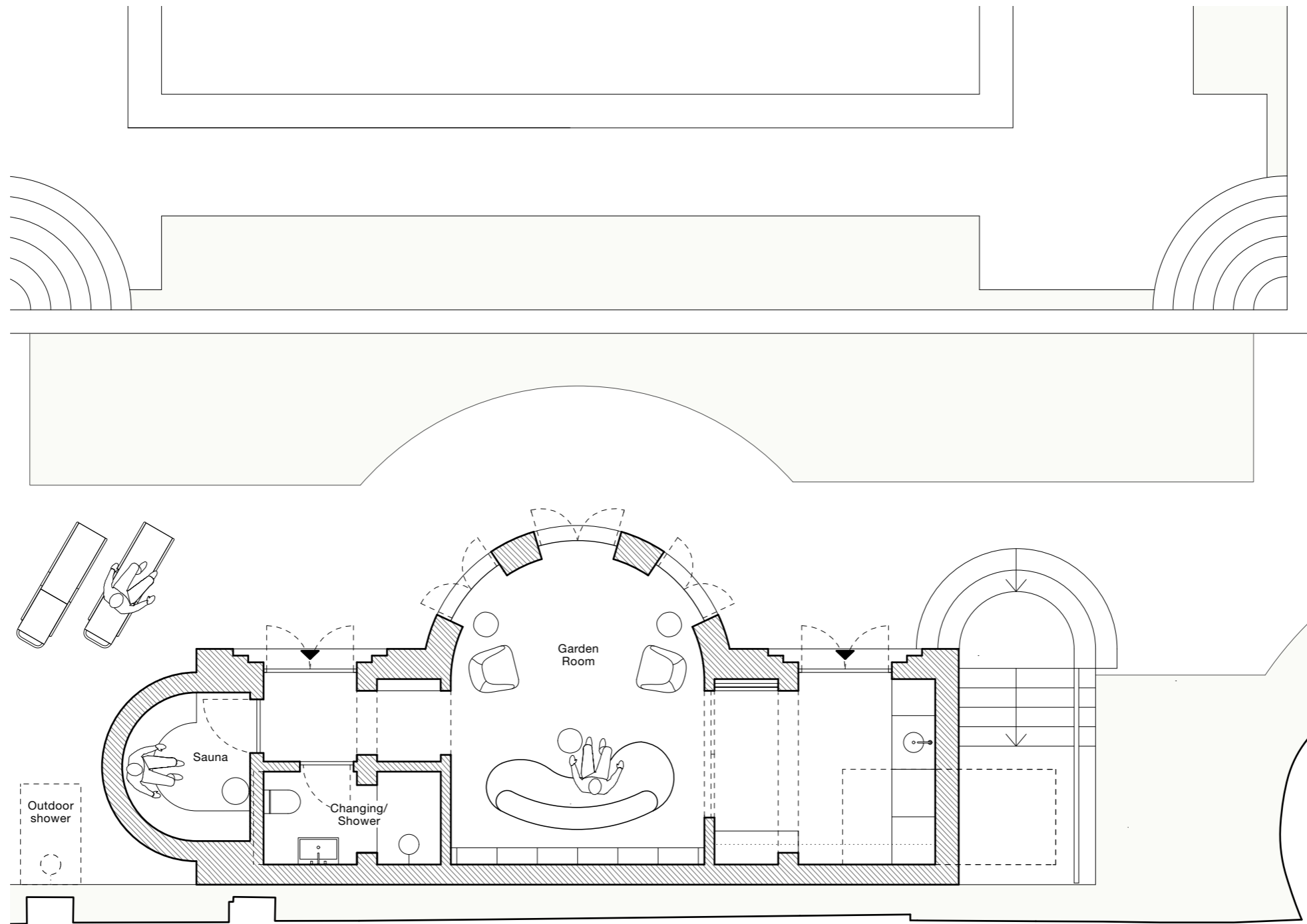
Its roof provides the main space for outdoor dining, with a large table, outdoor kitchen and more intimate seating area, screened from adjacent properties through the use of planting in pots and the adjacent tree planting.



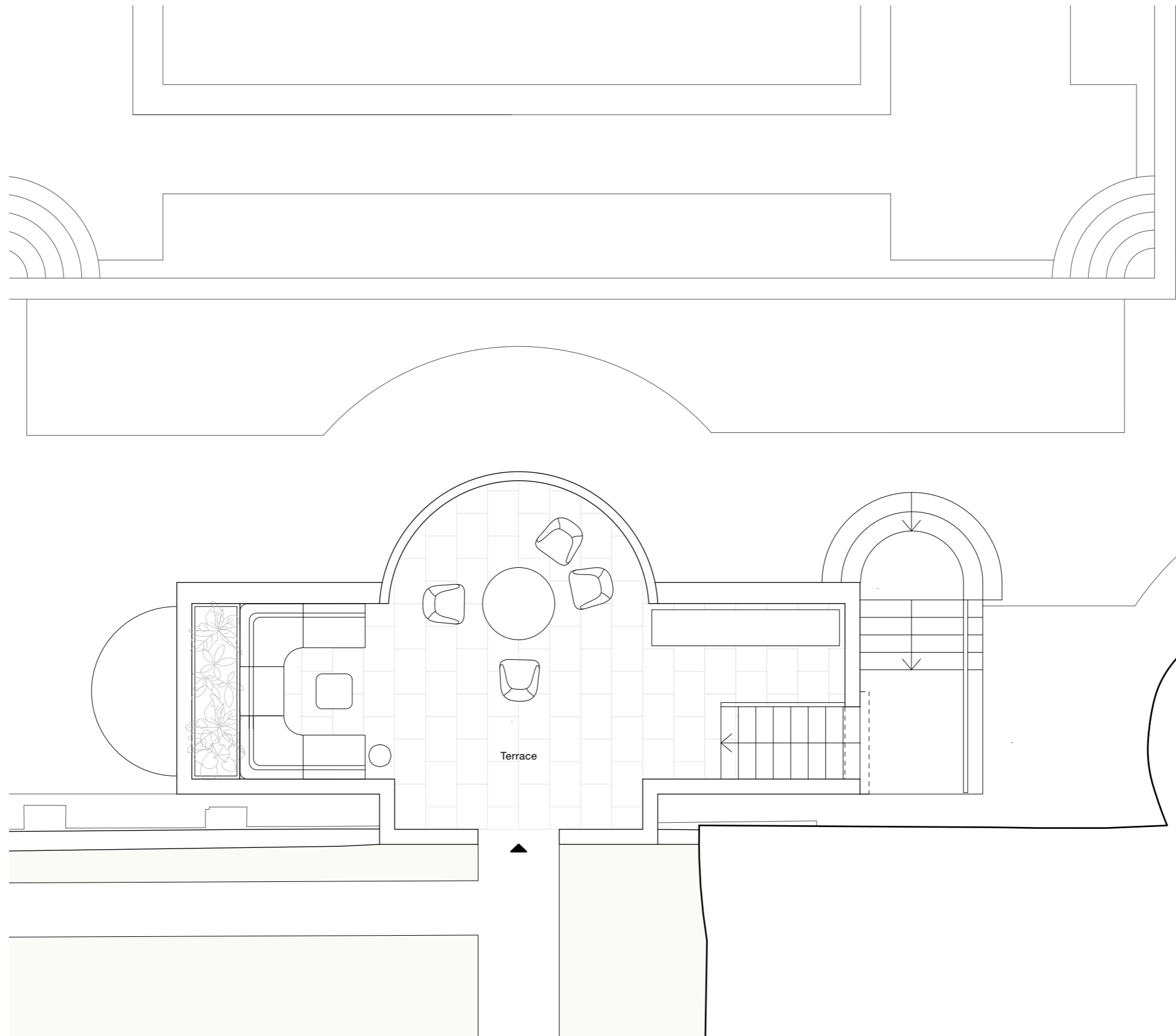
- 1 Summer House
- 2 Dining area
- 3 Seating area
- 4 Outdoor kitchen



The historic wall of Dorchester House forms the dividing wall between the upper and lower garden, behind the summer house.









**31/44**  
**Architects**



**31/44**  
**Architects**



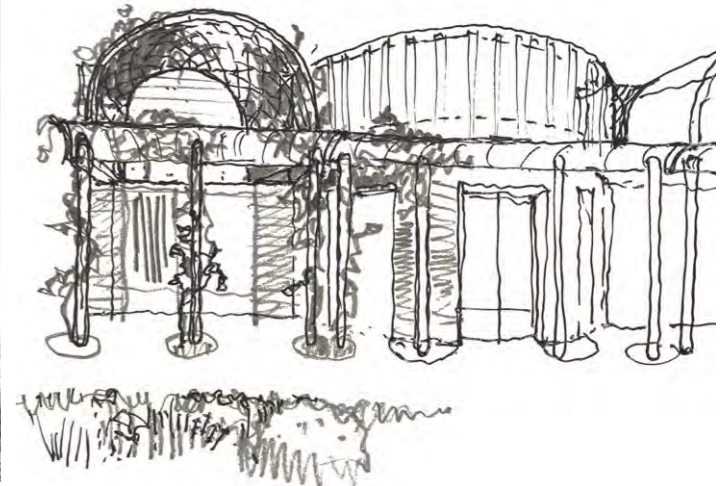
1



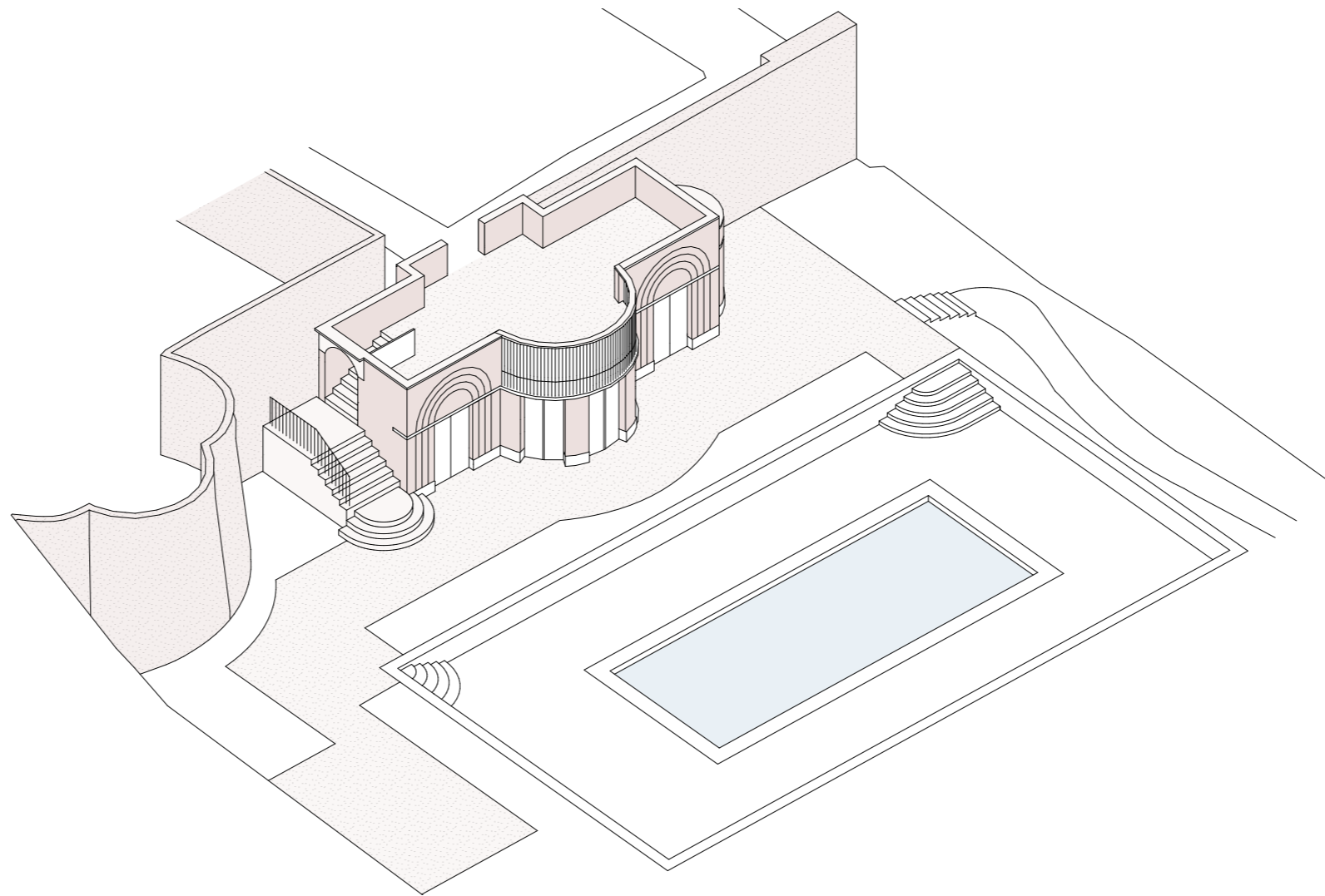
2



3



4



5

- 1 Vande Mortel Dutch Clay Paving - Copper Brown
- 2 Reclaimed Yorkstone paving
- 3 Detailed brickwork
- 4 Development sketch of the proposed Summer House
- 5 Proposed Axonometric