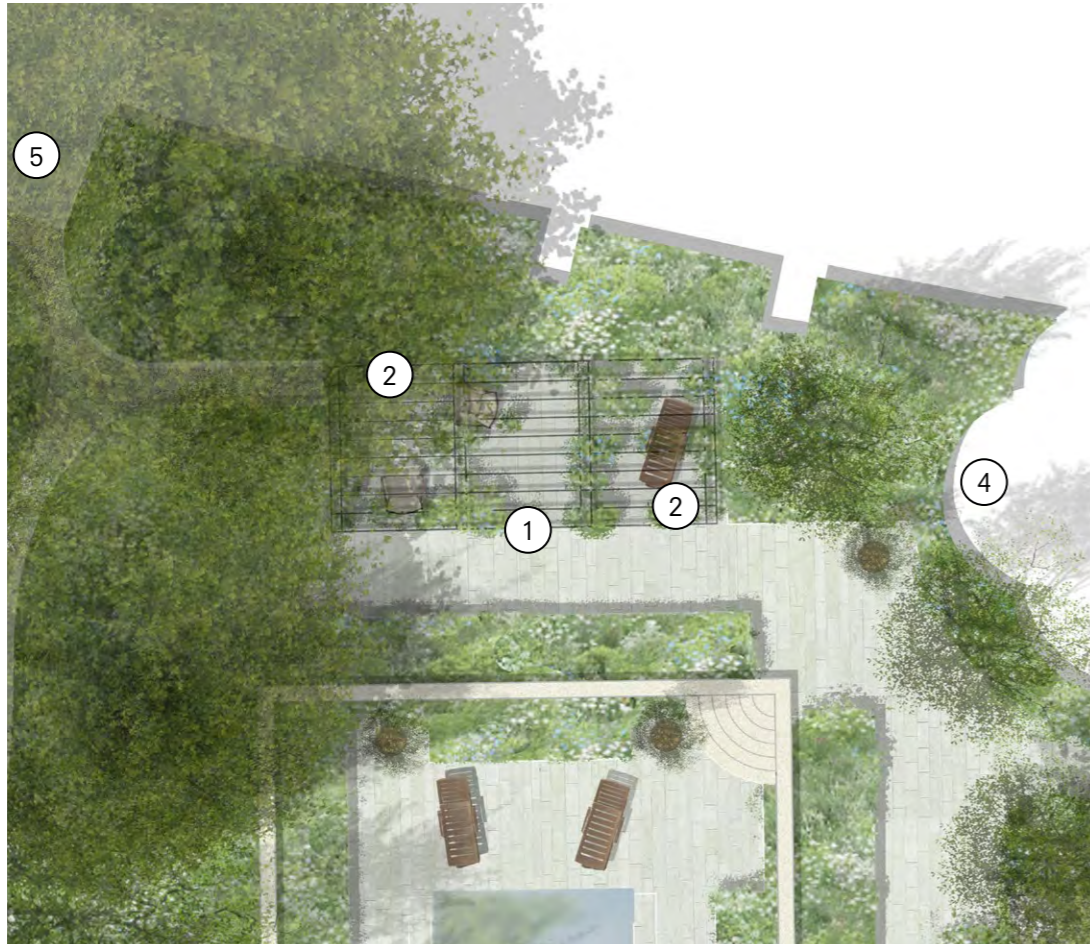


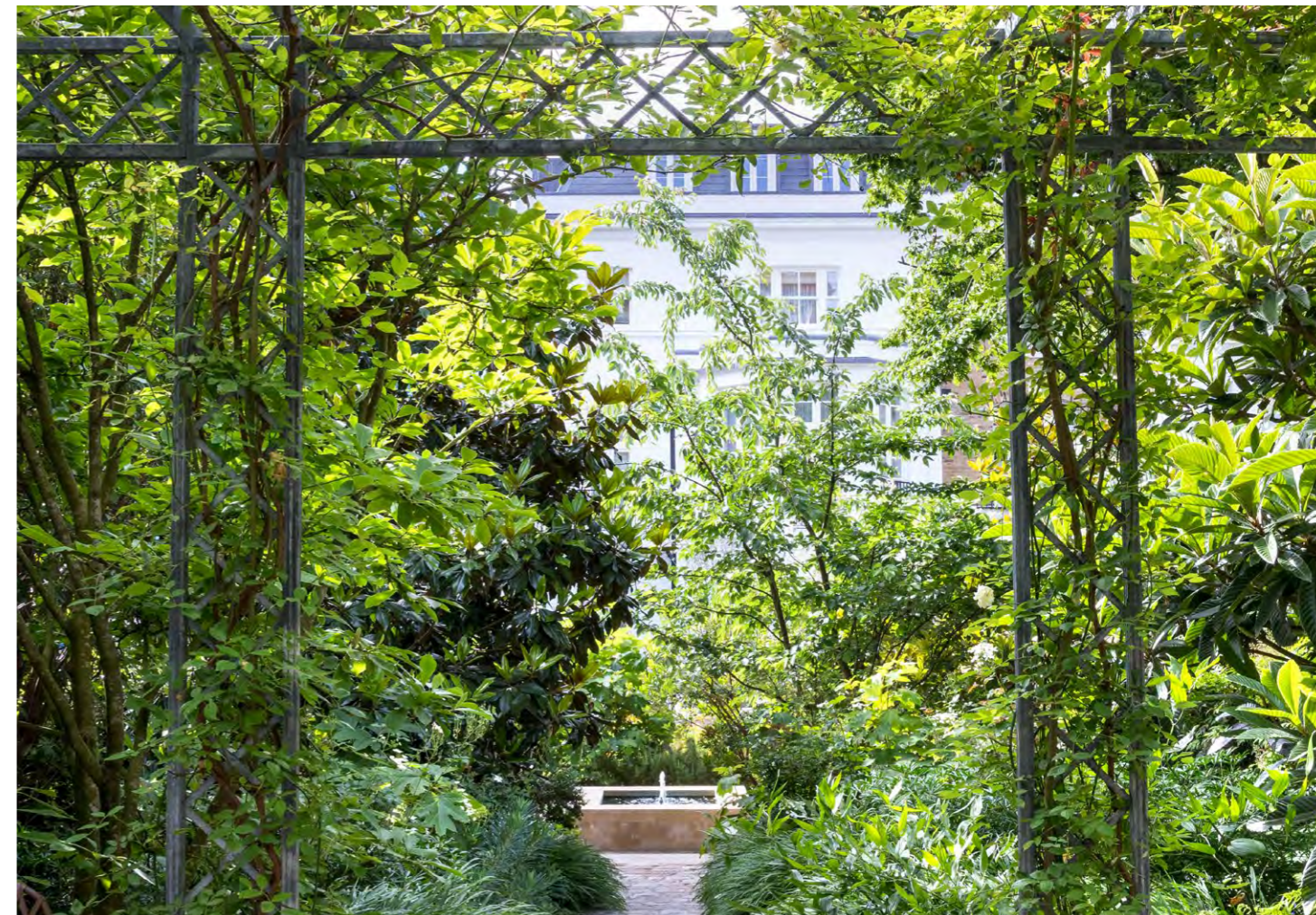
Pergola Terrace

To the North side of the pool, a pergola provides a covered outdoor seating area protected from overlooking by climbers on the pergola, large shrubs on the adjacent wall and the adjacent planting of proposed trees.

Its design provide a lightweight metal structure, up which 2 species of climbing rose - one to flower early in the season the other late, will be planted.



- 1 Pergola structure with climbing roses
- 2 Shaded seating
- 3 Terrace
- 4 Climbers to bastions
- 5 Existing buiding to act as pump/plant room for pool

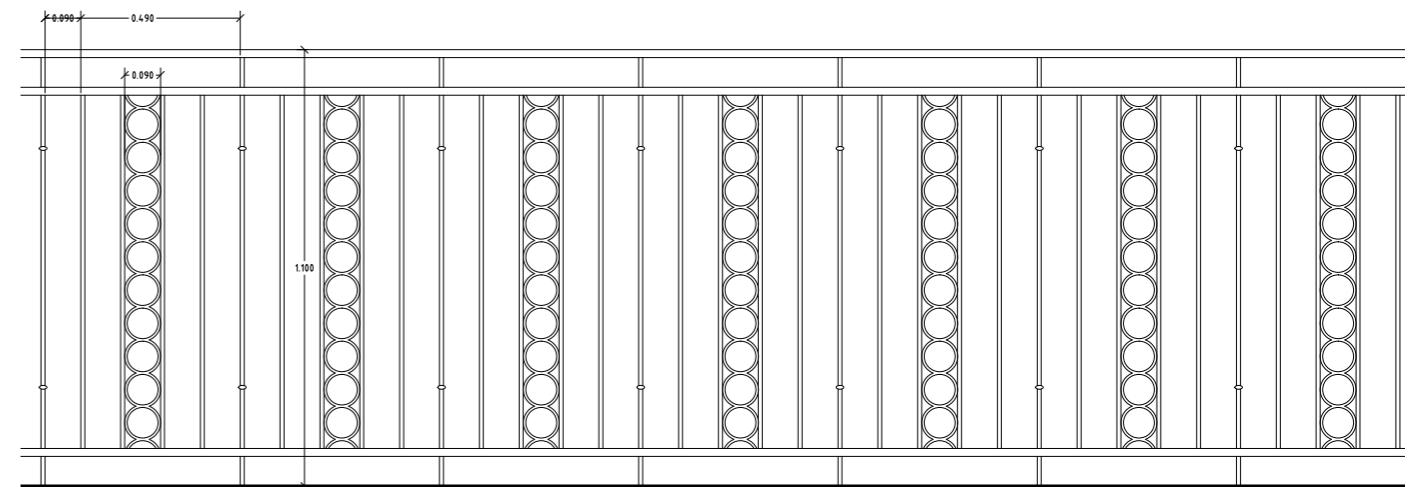




1



2



3



4



5

Summer House Terrace

- 1 Reclaimed Yorkstone paving to summer house roof
- 2 Table and chairs
- 3 Summer house railing concept sketch
- 4 View of the summer house from the pergola
- 5 View from the summer house roof



1



2



3



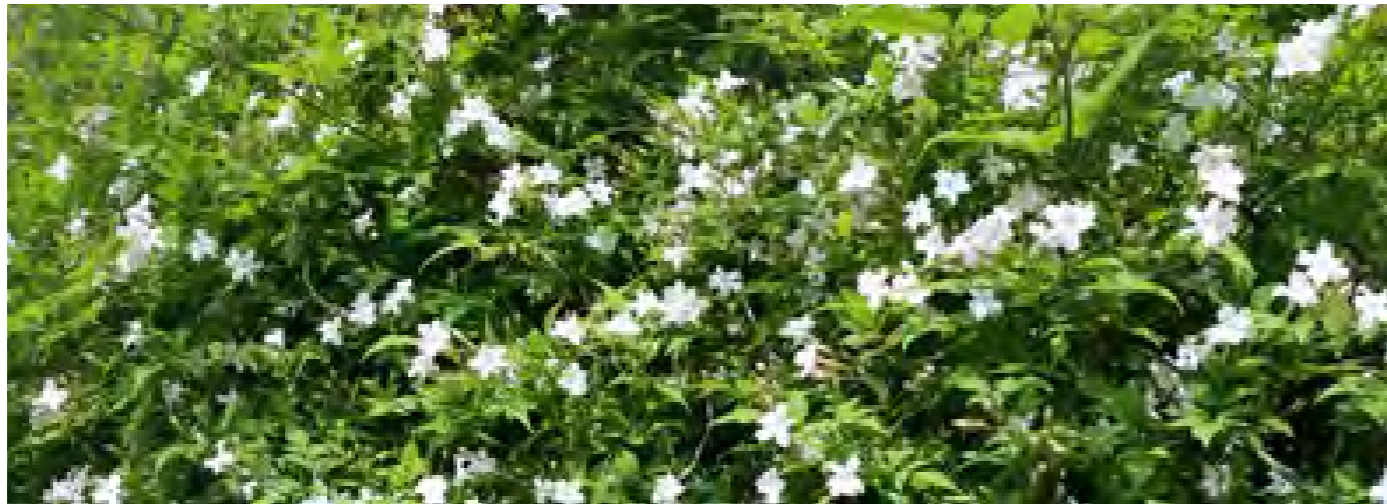
4



5



6



7



8



9

Indicative Planting Mix - Climbers

- 1 The Bastions
- 2 Rosa 'Seagull'
- 3 Rosa 'Madame Gregoire Staechelin'
- 4 Rosa 'Cecile Brunner'
- 5 Rosa 'Albéric Barbier'
- 6 Wisteria sinensis

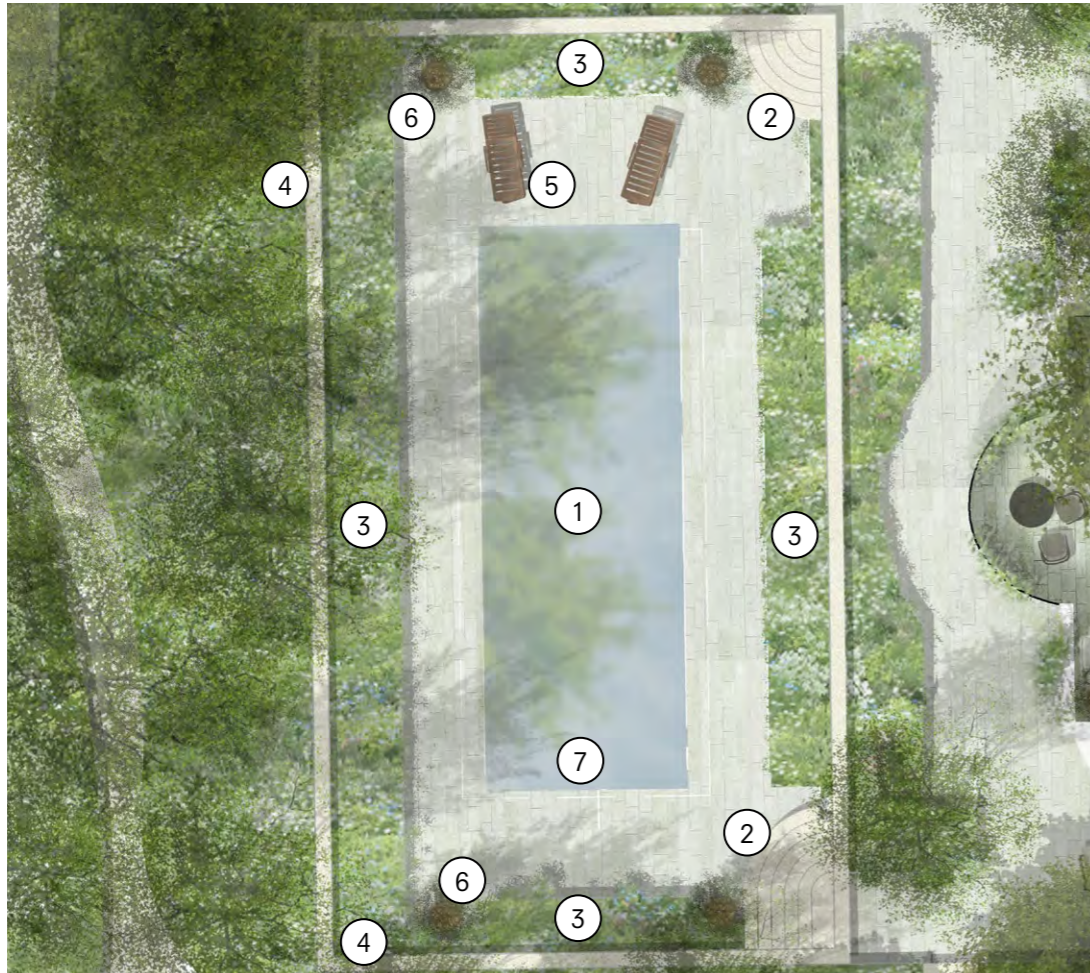
- 7 Jasminum officinale
- 8 Lonicera 'Graham Thomas'
- 9 Solanum jasminoides 'Album'



Pool Terrace

The lower part of the garden revolves around the pool. Descending either set of curved steps 90cm leads you to a calm basin within a sunken garden.

A comfortable surface finish, suitable for bare feet, of reclaimed Yorkstone surrounds the pool, itself contained by a generously planted border and low wall. Soft, low level lighting from around the lower terrace of the garden and within the pool will provide a subtle means of lighting the space and ensure safety in dark conditions. The central position of the pool, aligned on the pergola and summer house, creates spaces either end of the water for loungers and activity.



- 1 Pool
- 2 Curved steps
- 3 Planted borders
- 4 Retaining walls
- 5 Sun loungers
- 6 Olive trees in pots
- 7 Jet flow swim trainer location





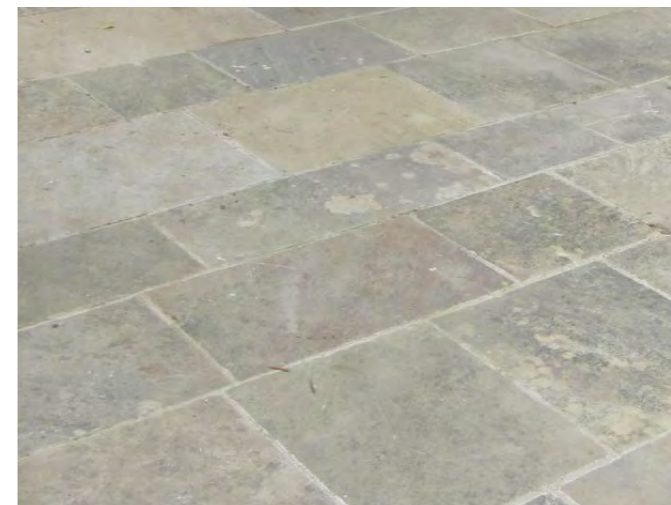
View from the summer house side of the pool terrace



1



2



3



4

- 1 Curved steps down to the pool
- 2 Sun lounger
- 3 Reclaimed Yorkstone paving
- 4 Example of pool coping and steps

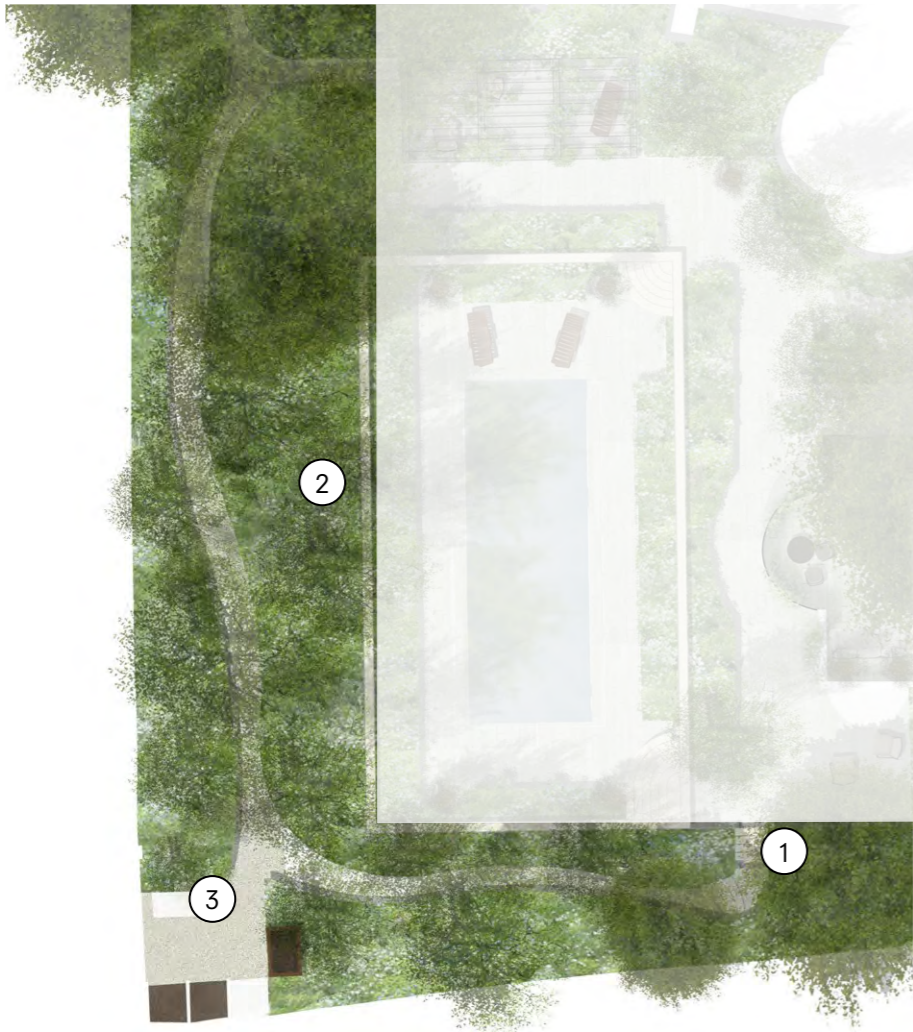


The Pool Terrace

Woodland Walk

A perimeter route of screening evergreens gives an opportunity to create a secluded, dell-like space - quiet, seemingly remote and embowered by trees to counter the activity of the pool with the tranquil feel of a woodland.

This will provide a space for a quiet walk, for grandchildren to build a den and a secluded counter point to the activity of the rest of the garden, whilst also screening Witanhurst.



- 1 Steps down to walk
- 2 Planted bank
- 3 Works area



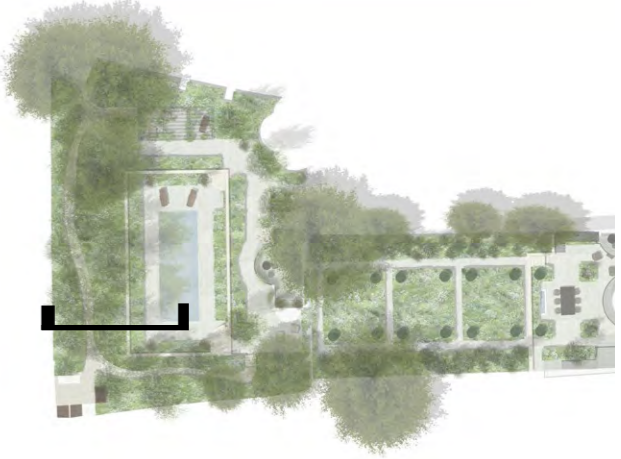


Pool Terrace Wall - Elevation (max wall height 1.65m)





The Woodland Walk - Section





The Woodland Walk

Garden Soft Landscape Area Change Schedule

The proposed scheme looks to increase the amount and quality of planting within the garden, removing the lawn in favour of more biodiverse, species rich planting, selected with pollinators in mind.

The large increase in herbaceous and shrub planting will also provide a means by which the hard surfaces are drained, with falls directed towards the numerous beds around the garden, as per Camden Planning Guidance. 5 The Grove is not an area identified as one that is at risk of flooding but nevertheless, consideration has been given to Camden Planning Guidance.

As Section 2.9 of this document, low water consuming plants have selected in order to limit the amount of water required within the garden.

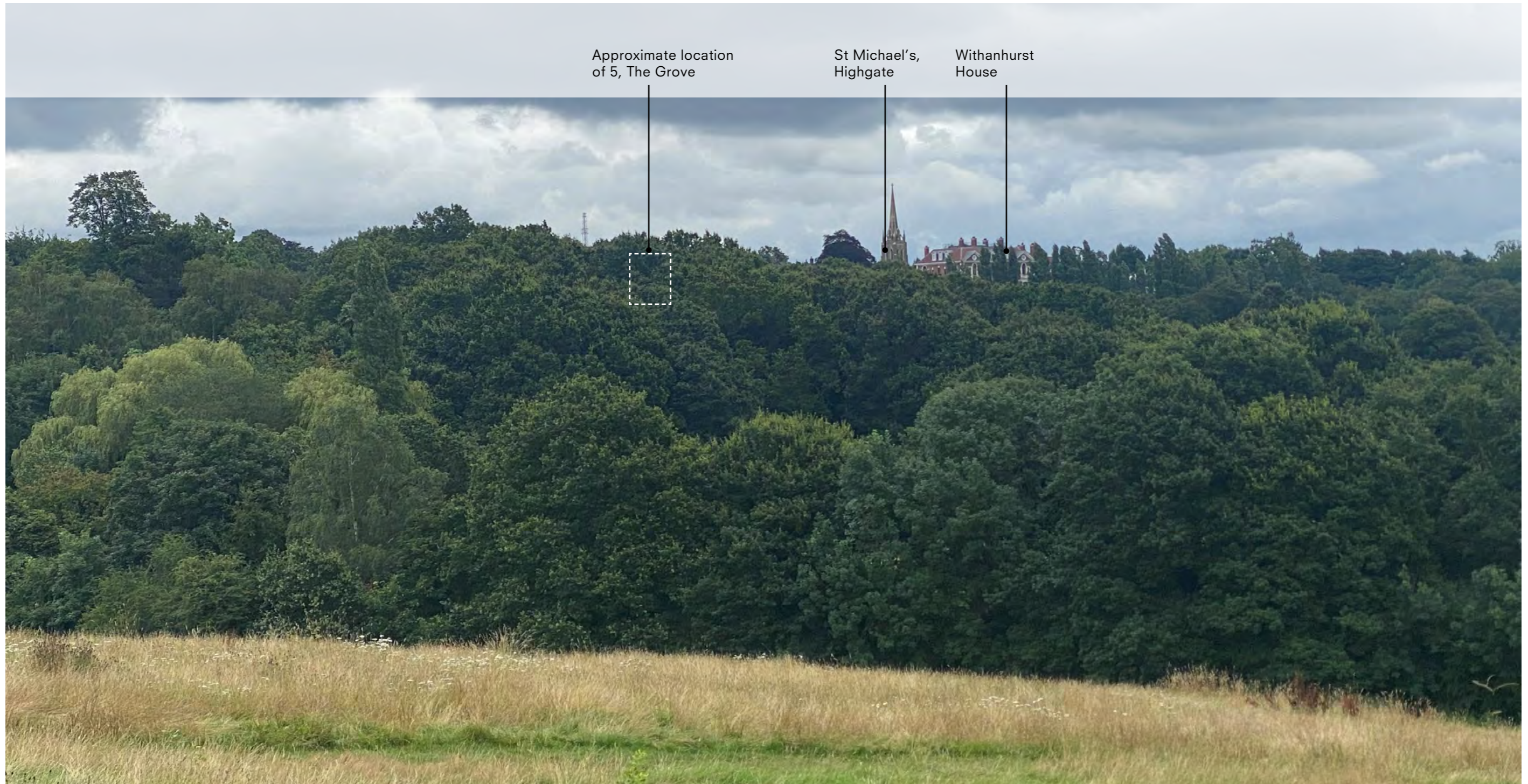
	Existing Garden (sqm)	Proposed Garden (sqm)	Difference (sqm)	Percentage Increase
Lawn	705	0	-705	N/A
Herbaceous and shrub planting	319	895	576	181%
Paving	112	400	288	257%



Athlone House

Approximate location
of 5, The Grove

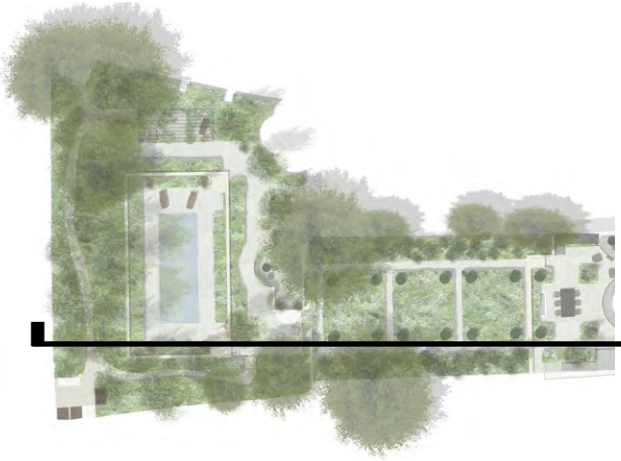
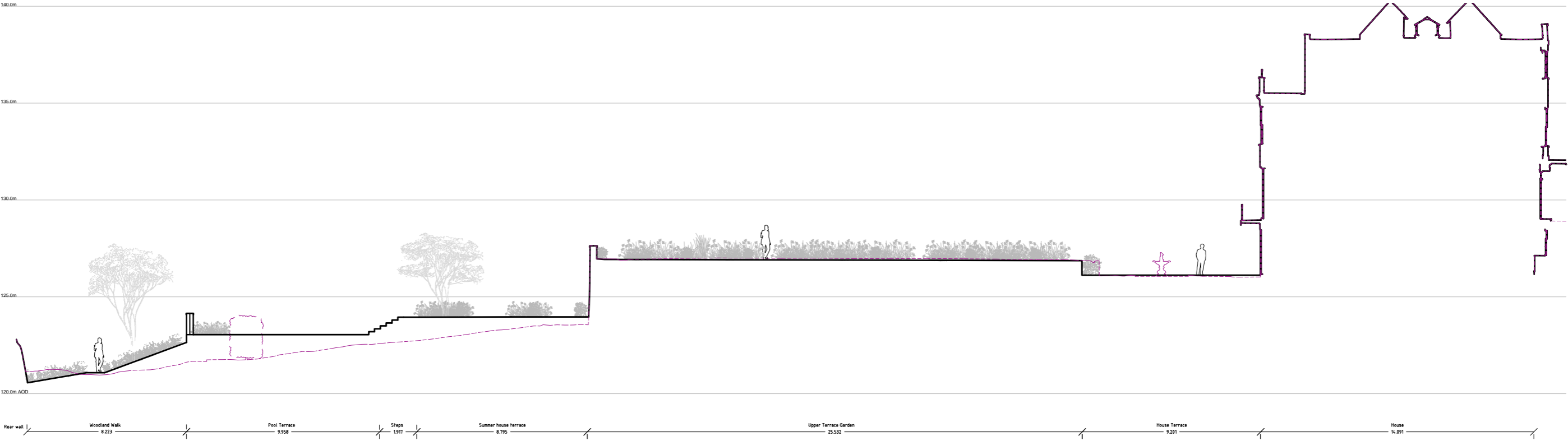
View from Hampstead Heath towards Athlone House



View from Hampstead Heath towards The Grove



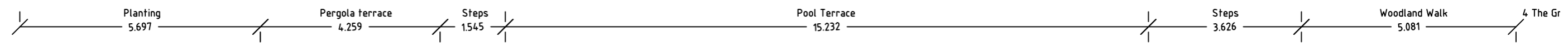
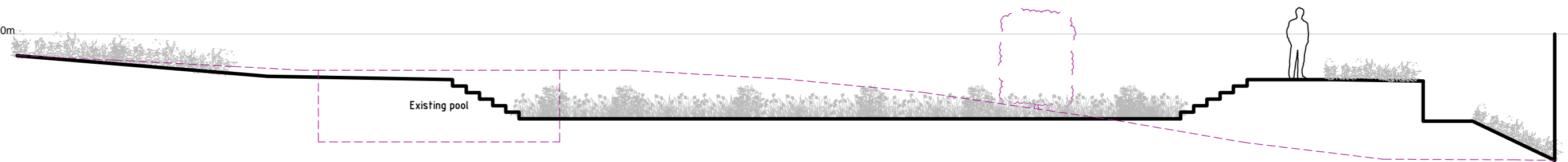
View from Hampstead Heath towards The Grove





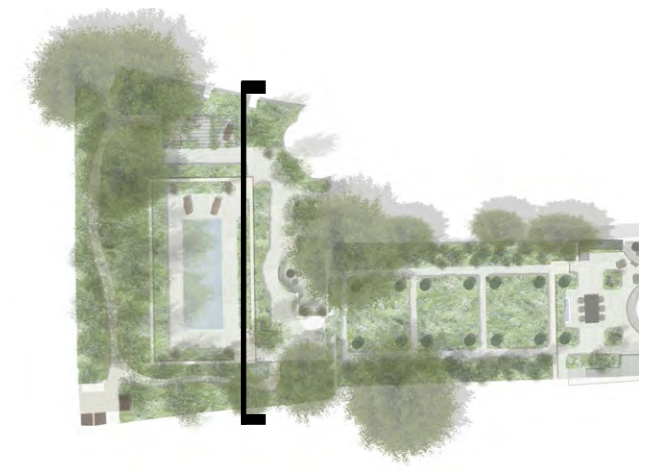
130.0m

125.0m

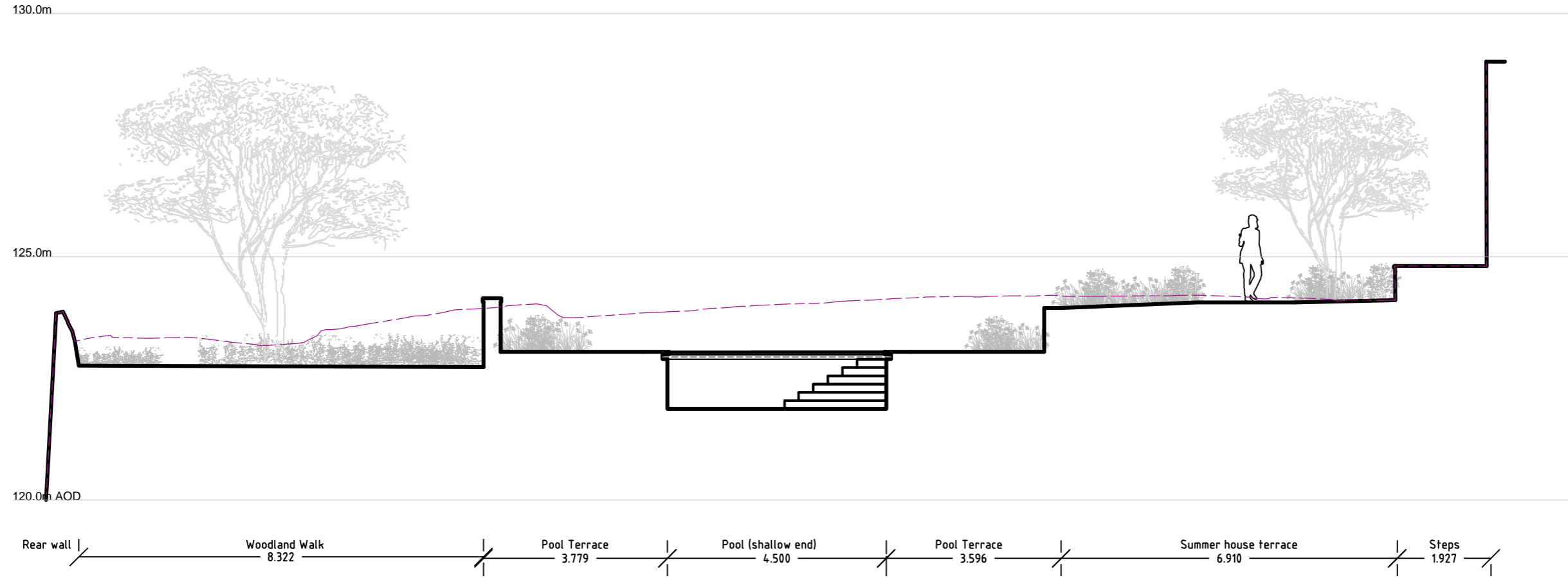
120.0m AOD



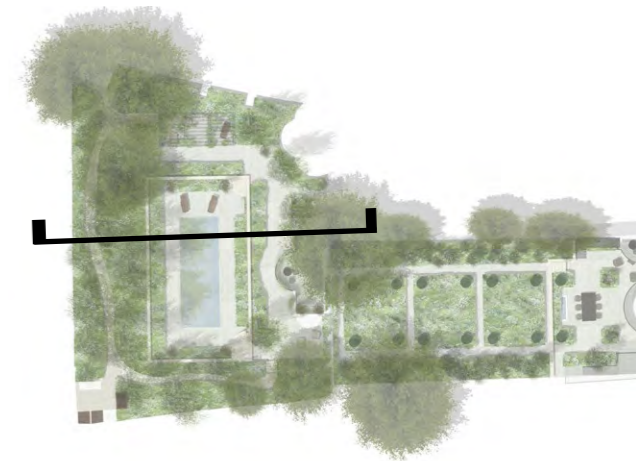
Proposed groundline 
 Existing condition 

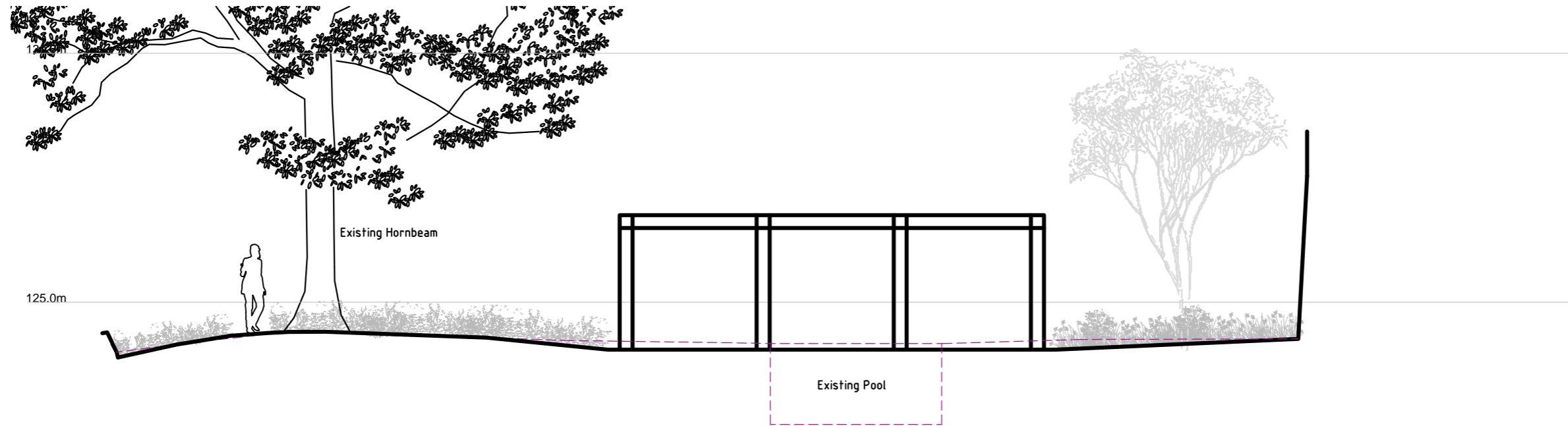


Section BB'
Scale 1:100

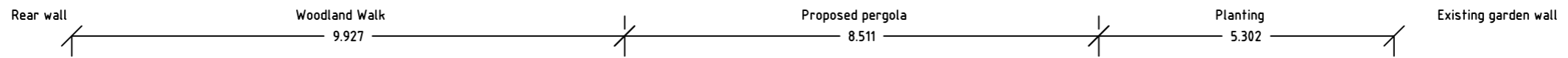


Proposed groundline ———
Existing condition - - - - -

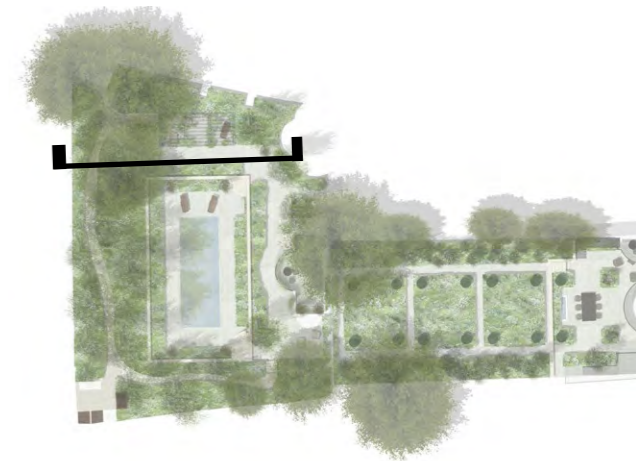


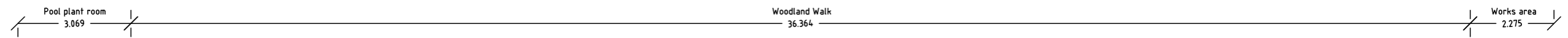
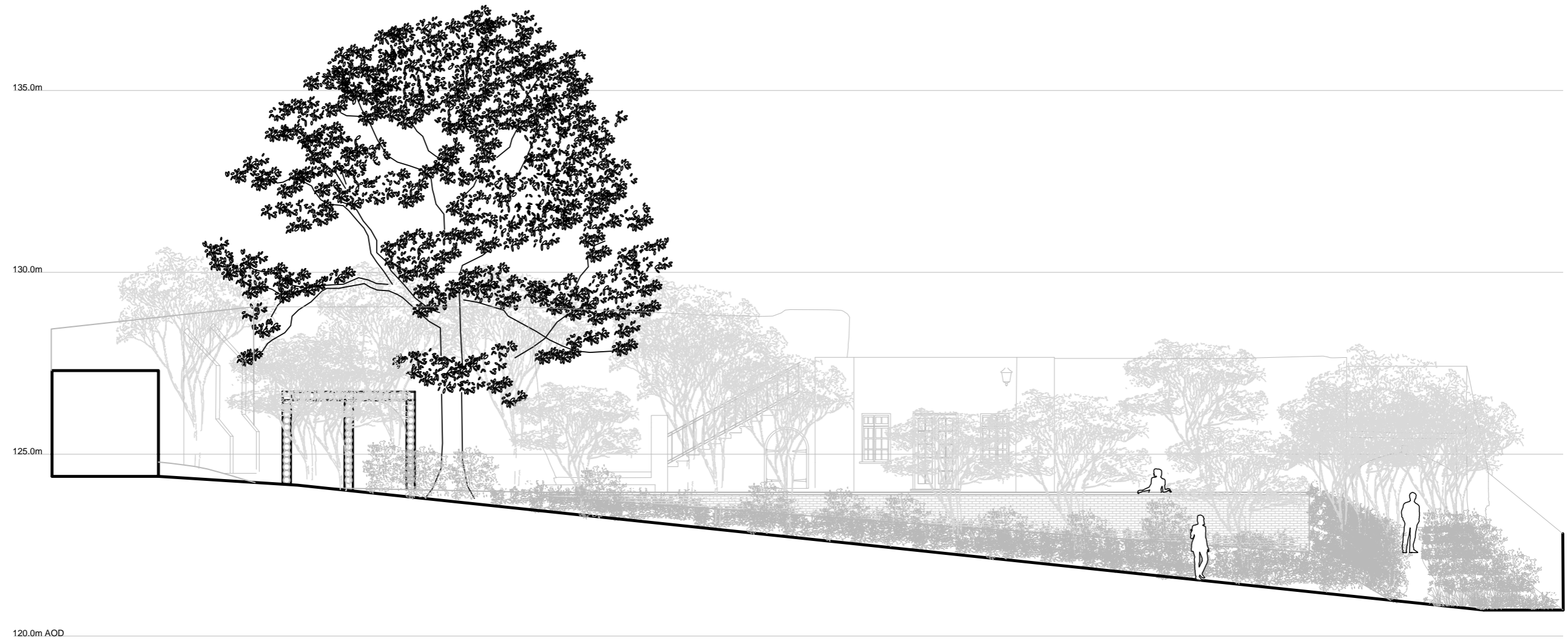


120.0m AOD



Proposed groundline 
 Existing condition 





Proposed groundline ———
 Existing condition - - - - -

