

#### GENERAL NOTES

- REFER TO SCHEMATICS FOR ALL VALVES
- REFER TO MECHANICAL SCHEDULES
- SANITARYWARE SPECIFIED BY ARCHITECT. CONTRACTOR TO ALLOW INSTALL ONLY.

#### LEGEND

- HOT WATER  
— COLD WATER  
- - - - - HIGH LEVEL PIPEWORK
- QUOOKER TAP  
W/M - WASHING MACHINE  
D/W - DISHWASHER

#### STAGE 4

C	AUG.21	COMMENTS INCORPORATED
B	JUL.21	REVISED WATER PIPEWORK
A	APR.21	REVISED TO SUIT UPDATED BACKGROUNDS
0	JUN.19	STAGE 4 ISSUE
Rev	Date	Description

**TPS.**

Taylor Project Services LLP

No.1 Cornhill  
London, EC3V 3ND  
Tel 020 7743 6602  
www.taylorprojectservices.com

Client



Project

30 PERCY STREET  
LONDON

Drawing Title

GROUND FLOOR  
WATER SERVICES LAYOUT

Scale 1:50@A1

Date 21.01.19

Drawn D.F.

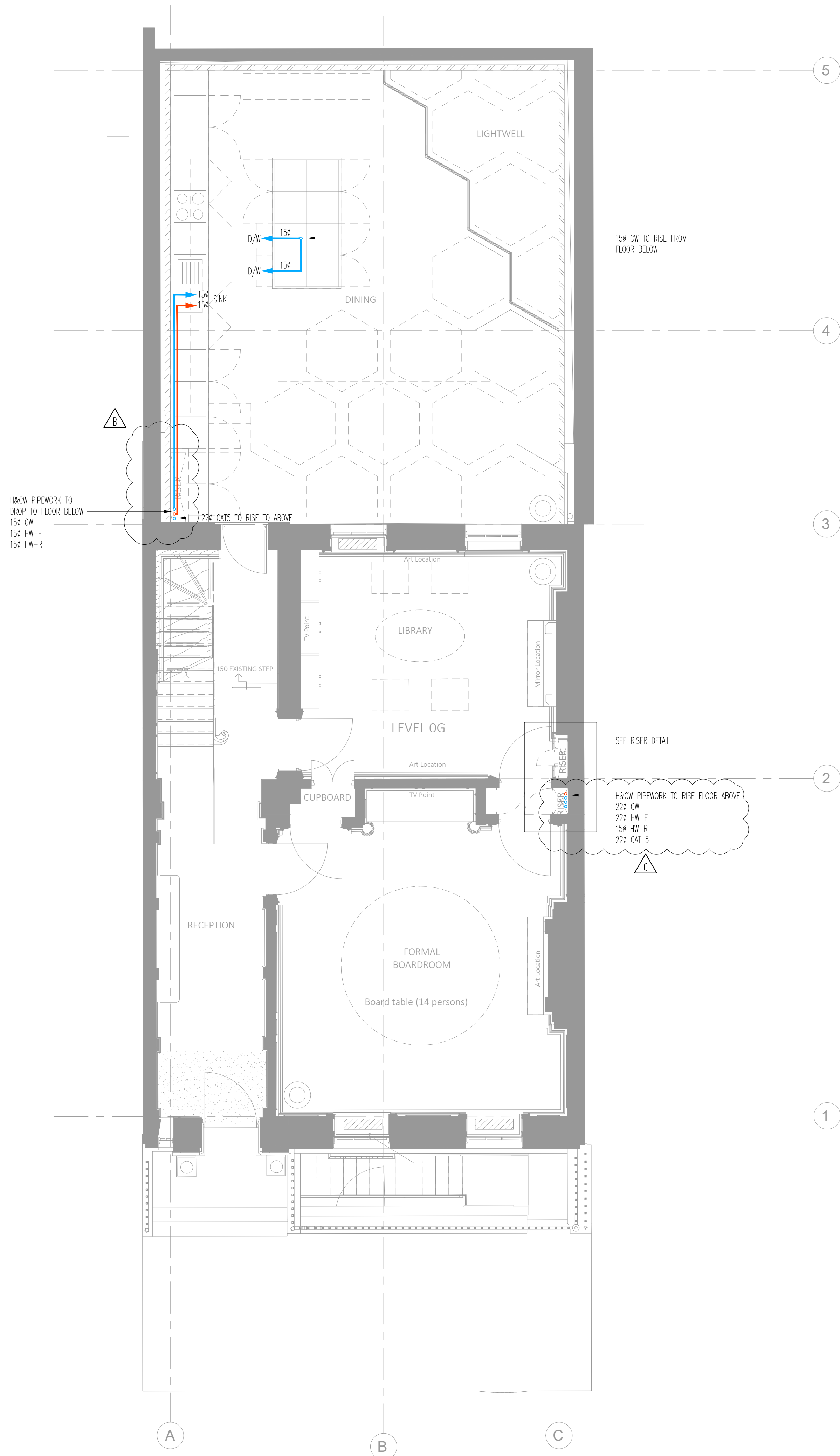
Checked C.M.

Drawing Status

STAGE 4

Revision 0 A B C

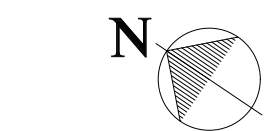
Drawing No. TPS/30PS/G/WS



NO SERVICES SHALL BE RUN ON SURFACE/EXPOSED AND  
MINI TRUNKING SHALL NOT BE INSTALLED IN ANY ROOM.

ALL SERVICES RUNS TO BE REVIEWED ON SITE FOLLOWING  
STRIP OUT AND OPENING UP.

NEW SERVICE ROUTES TO BE INSTALLED WITHIN EXISTING  
BUILDERS WORK & UTILISED WHEREVER POSSIBLE.



Scale Bar 1:50 @ A1