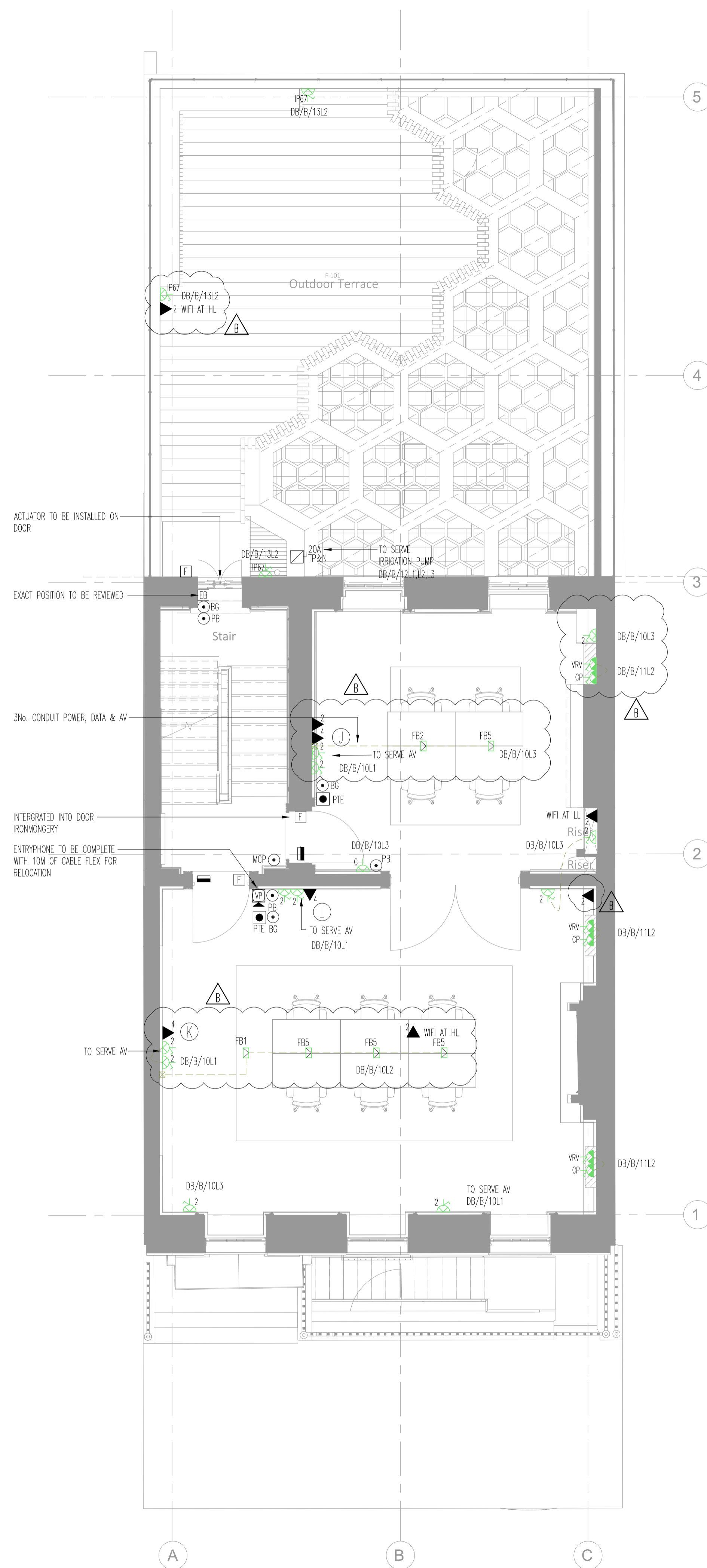


GENERAL NOTES

- REFER TO SCHEDULES FOR ACCESSORY SELECTIONS
- SETTING OUT BY OTHERS
- ALL CONTAINMENT THROUGHOUT TO BE METALLIC STEEL GALVANISED TRAY/CONDUIT
- LETTER REFERENCES DENOTE UNCODED AV REFERENCES.

LEGEND

- CLEANERS SOCKET OUTLET
- TWIN SWITCHED SOCKET OUTLET
- SWITCHED FUSED CONNECTION UNIT
- UNSWITCHED FUSED CONNECTION UNIT
- FAP - FIRE ALARM PANEL
- VRV - VRV UNIT
- CP - CONDENSE PUMP
- EPH - ELECTRIC PANEL HEATER
- Q - QUOOKER
- HOB - HOB
- UFH - UNDERFLOOR HEATING
- WC - WATER CONDITIONER
- UV - UV FILTER
- IMM - IMMERSION
- FB1 3 COMPARTMENT FLOOR OUTLET BOX
- 2 x TSSO
- 1 x QUAD RJ45
- FB2 3 COMPARTMENT FLOOR OUTLET BOX
- 1 x TSSO
- 1 x QUAD RJ45 & 1 x BLANK FOR AV
- FB3 CIRCULAR FLOORBOX WITH 5A SOCKET OUTLET
- FB4 2 COMPARTMENT FLOOR BOX
- 1 x TSSO
- 1 x DUAL RJ45
- FB5 2 COMPARTMENT FLOOR BOX
- 1 x TSSO (DATA)
- 1 x TSSO WITH USB
- 1 x TSSO
- VPH VIDEO ENTRY PHONE HANDSET
- VEP VIDEO ENTRY PANEL
- F FOB SENSOR
- DUAL RJ45 OUTLET (4 DENOTES QUAD)
- IP67 RATED SOCKET OUTLET
- FIRE ALARM MCP
- DOUBLE POLE PUSH TO EXIT/GREEN BREAK GLASS
- POWER TRACK 2400mm LONG
- SINGLE SOCKET FOR FRIDGE
- SINGLE SOCKET FOR DISHWASHER
- ISOLATOR (SWITCH DISCONNECTOR) RATING AND PHASE IDENTIFICATION
- FIRE ALARM CONTROL PANEL
- 5 AMP LIGHTING SWITCH SOCKET
- SINGLE RJ45 OUTLET FROM ROUTER
- GRID PLATE
- DISTRIBUTION BOARD
- BT TELEPHONE LINE
- PANIC ALARM BUTTON



STAGE 4

Rev	Date	Description
B	AUG.21	COMMENTS INCORPORATED
A	MAY.21	REVISED TO SUIT UPDATED BACKGROUNDS
0	JUN.19	STAGE 4 ISSUE

TPS.
Taylor Project Services LLP

No.1 Cornhill
London, EC3V 3ND
Tel 020 7743 6602
www.taylorprojectservices.com



Project
30 PERCY STREET
LONDON

Drawing Title
FIRST FLOOR
LOW LEVEL ELECTRICAL
SERVICES LAYOUT

Scale 1:50@A1	Date 17.01.18
Drawn T.S.	Checked M.G.
Drawing Status STAGE 4	
Revision 0 A B	
Drawing No. TPS/30PS/1/E/LL	

NO SERVICES SHALL BE RUN ON SURFACE/EXPOSED AND MINI TRUNKING SHALL NOT BE INSTALLED IN ANY ROOM.
ALL SERVICES RUNS TO BE REVIEWED ON SITE FOLLOWING STRIP OUT AND OPENING UP.
NEW SERVICE ROUTES TO BE INSTALLED WITHIN EXISTING BUILDERS WORK & UTILISED WHEREVER POSSIBLE.

