

Do not scale off this drawing - All areas and dimensions are approximate and subject to site survey.
© copyright of fasou associates

NO. 22

COMMERCIAL

APPROVED PLANNING PERMISSION FOR
SECOND HOUSE (18B) AND
RECONFIGURING FLAT 01 AND 02.
REF: 2018/4942/P

CANAL

ST PANCRAS WAY

PRIVATE HOUSE

LIFT

1280L RECYCLING
1280L RECYCLING

B COURTYARD

PRIVATE HOUSE

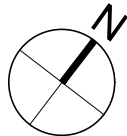
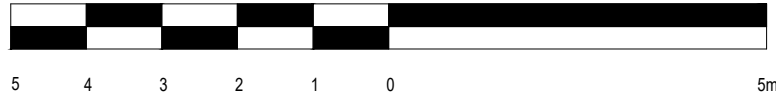
RESIDENTIAL
ENTRANCE

1280L REFUSE
1280L REFUSE

NO. 16

fasou
associates architects + structural engineers

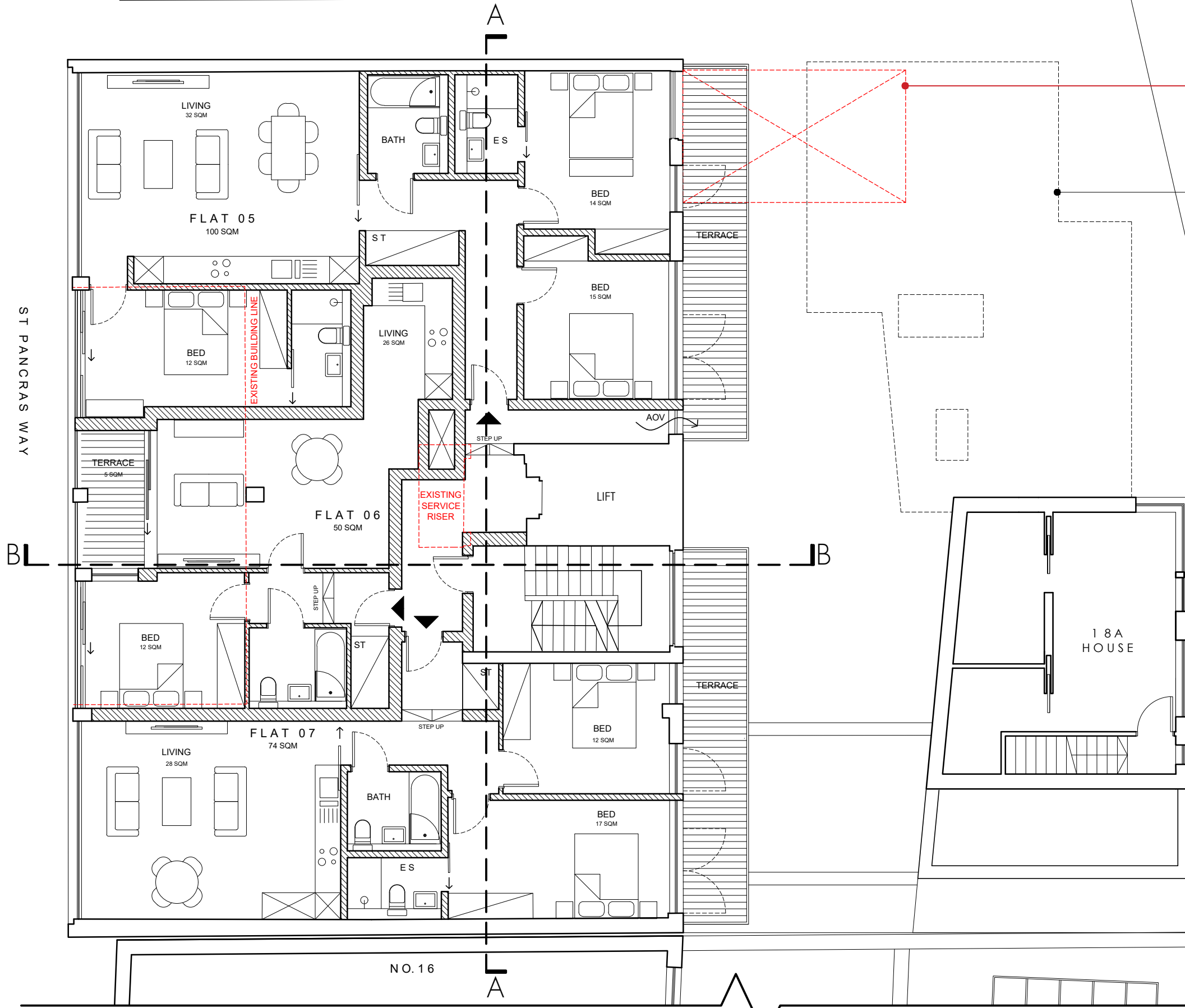
4 Amwell Street, London, EC1R 1UG T:020 7713 7070 F:020 7713 7071 E:fasou@fasou.co.uk



project	1517- St Pancras Way (18-20)		
dwg title	PROPOSED UPPER GROUND FLOOR		
job no.	1744	dwg no.	PA.00 rev.
date	Sept 2021	scale @ A3	1:100

NO. 22

Do not scale off this drawing - All areas and dimensions are approximate and subject to site survey.
© copyright of tasou associates



LINE OF EXTERNAL STAIRCASE TO BE DEMOLISHED ASSOCIATED WITH PLANNING APPLICATION [2018/4942/P](#)

APPROVED PLANNING PERMISSION FOR SECOND HOUSE (18B) AND RECONFIGURING FLAT 01 AND 02. REF: [2018/4942/P](#)

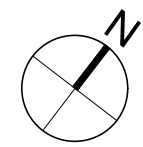
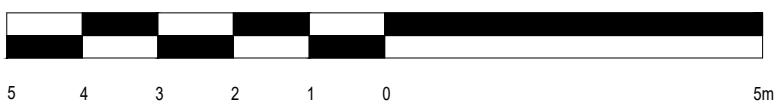
ST PANCRAS WAY

18A HOUSE

NO. 16

tasou
associates architects + structural engineers

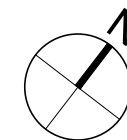
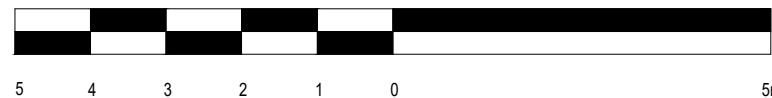
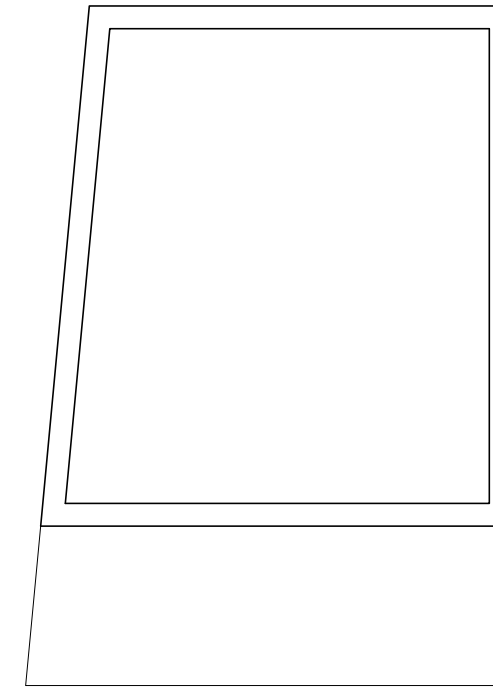
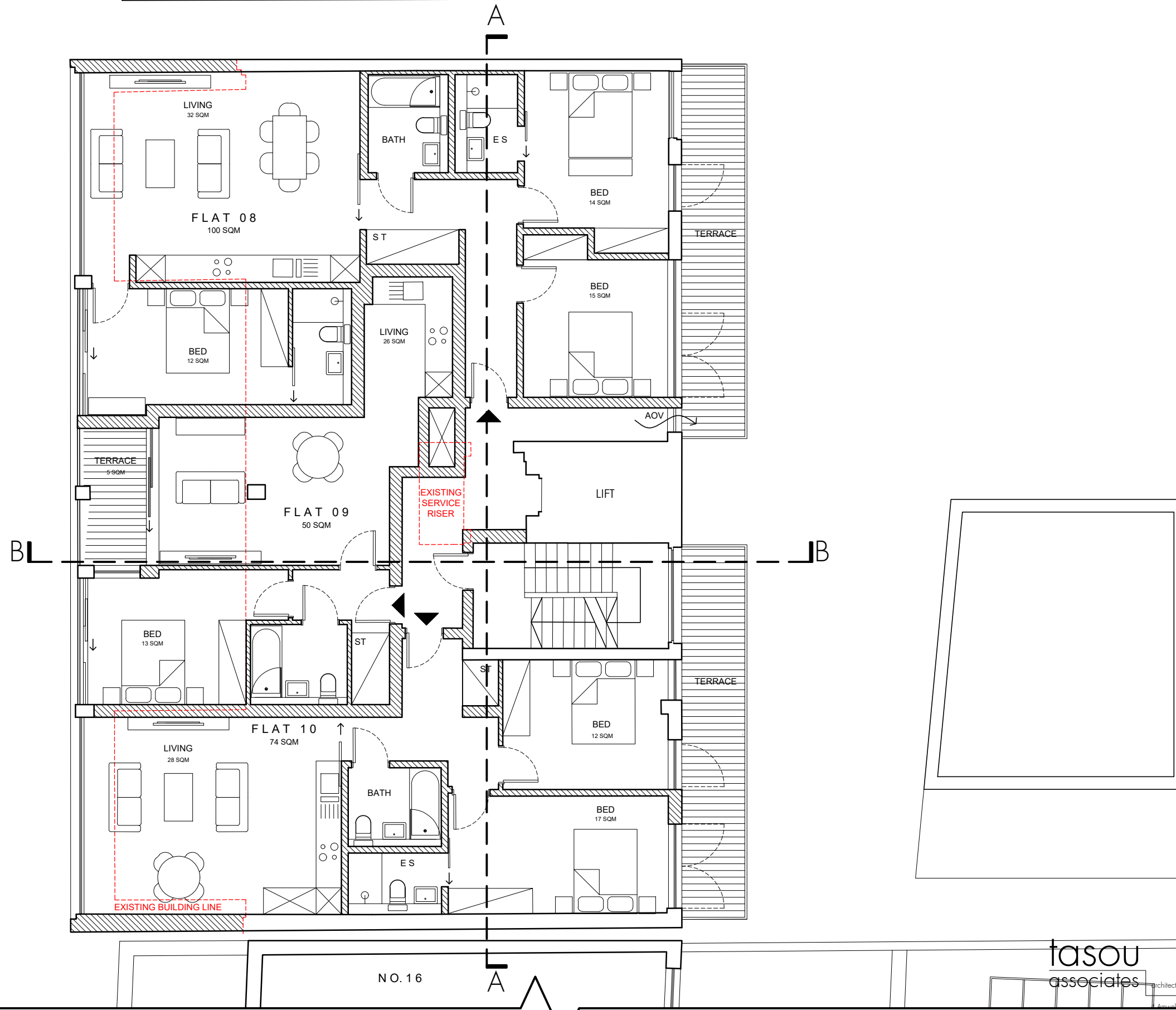
4 Amwell Street, London, EC1R 1UG T:020 7713 7070 F:020 7713 7071 E:tasou@tasou.co.uk



project	1517- St Pancras Way (18-20)		
dwg title	PROPOSED SECOND FLOOR		
job no.	1744	dwg no.	PA.01
date	Sept 2021	scale @ A3	1:100

NO. 22

Do not scale off this drawing - All areas and dimensions are approximate and subject to site survey.
© copyright of fasou associates

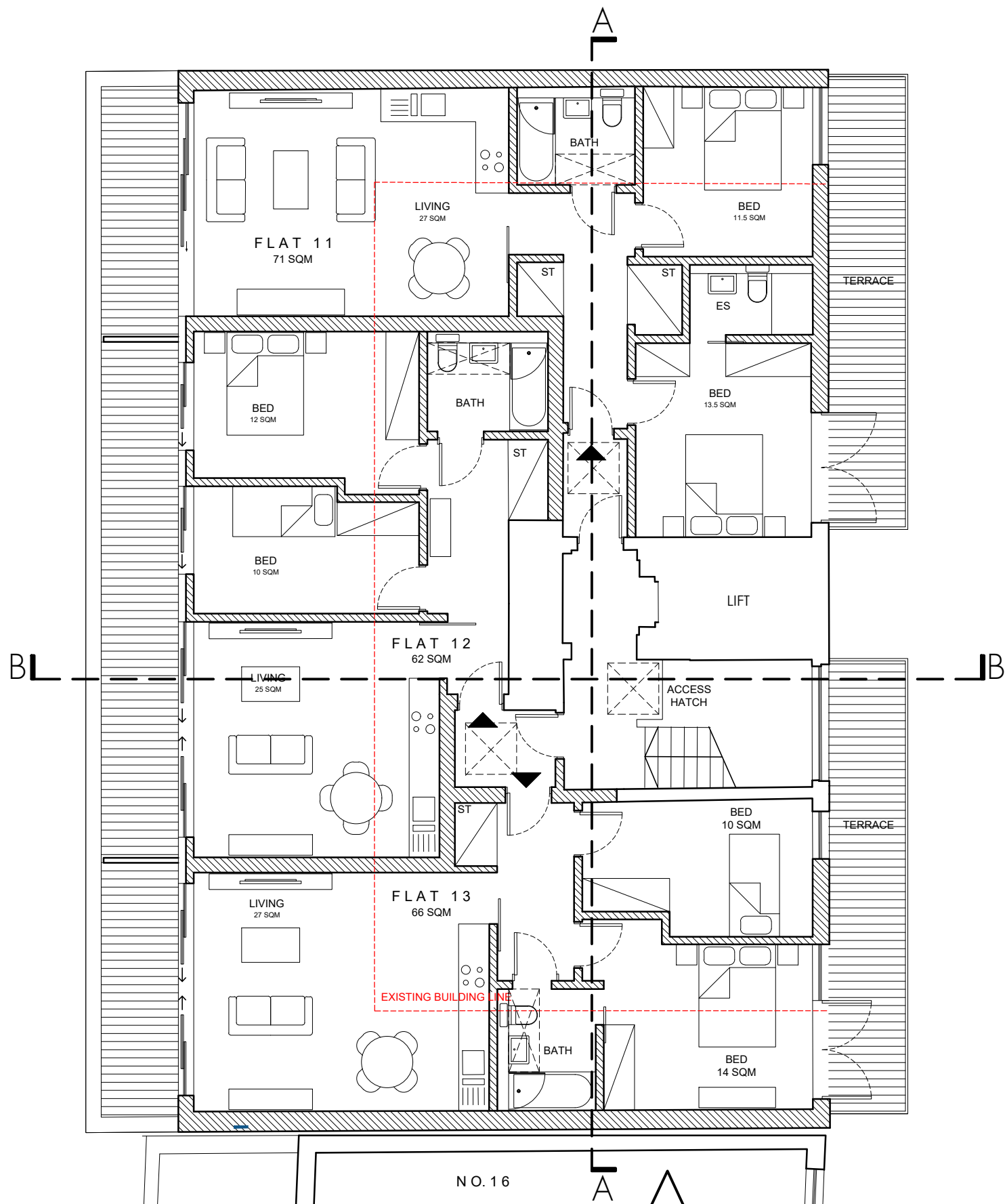


fasou
associates architects + structural engineers

project 1517- St Pancras Way (18-20)
 dwg title PROPOSED THIRD FLOOR
 job no. 1744
 date Sept 2021
 drwg no. PA.02
 scale @ A3 1:100
 rev. -

NO. 22

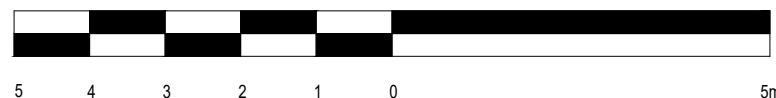
Do not scale off this drawing - All areas and dimensions are approximate and subject to site survey.
© copyright of tasou associates



NO. 16

tasou
associates architects + structural engineers

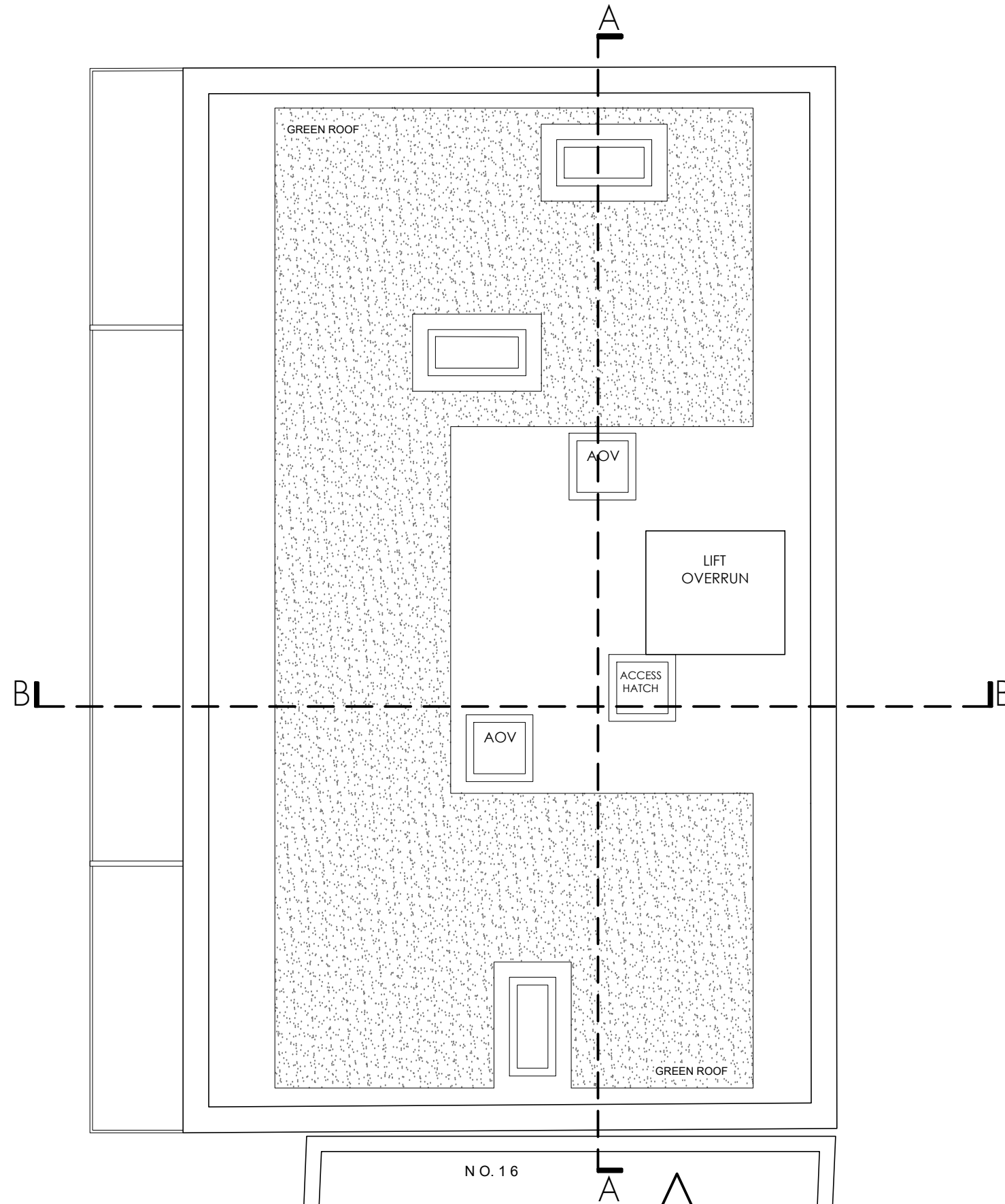
4 Amwell Street, London. EC1R 1UG T:020 7713 7070 F:020 7713 7071 E:tasou@tasou.co.uk



project	1517- St Pancras Way (18-20)		
dwg title	PROPOSED FOURTH FLOOR		
job no.	1744	dwg no.	PA.03
date	Sept 2021	scale @ A3	1:100
		rev.	-

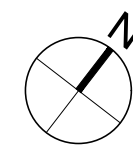
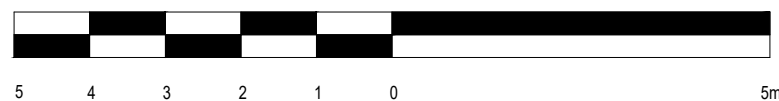
N.O. 22

Do not scale off this drawing - All areas and dimensions are approximate and subject to site survey.
© copyright of tasou associates



tasou
associates architects + structural engineers

4 Amwell Street, London. EC1R 1UQ T:020 7713 7070 F:020 7713 7071 E:tasou@tasou.co.uk



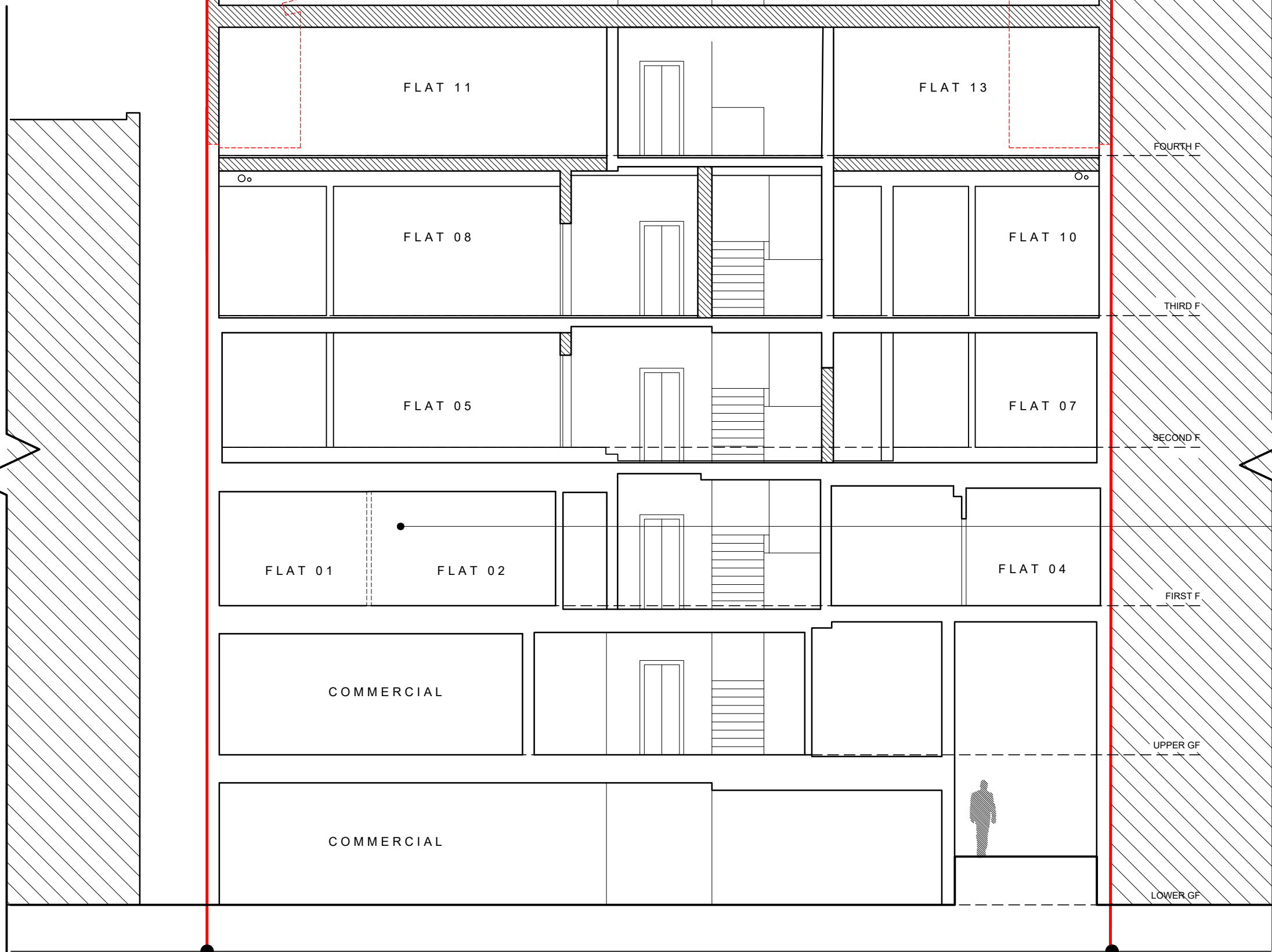
project	1517- St Pancras Way (18-20)		
dwg title	PROPOSED ROOF PLAN		
job no.	1744	dwg no.	PA.04
date	Sept 2021	scale @ A3	1:100
		rev.	-

Do not scale off this drawing - All areas and dimensions are approximate and subject to site survey.
© copyright of tasou associates

BOUNDARY

BOUNDARY

EXISTING BUILDING LINE



APPROVED PLANNING PERMISSION FOR
SECOND HOUSE (18B) AND
RECONFIGURING FLAT 01 AND 02.
REF: 2018/4942/P

NO. 22

18-20 ST PANCRAS WAY

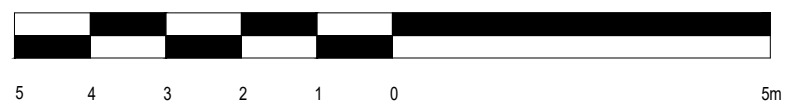
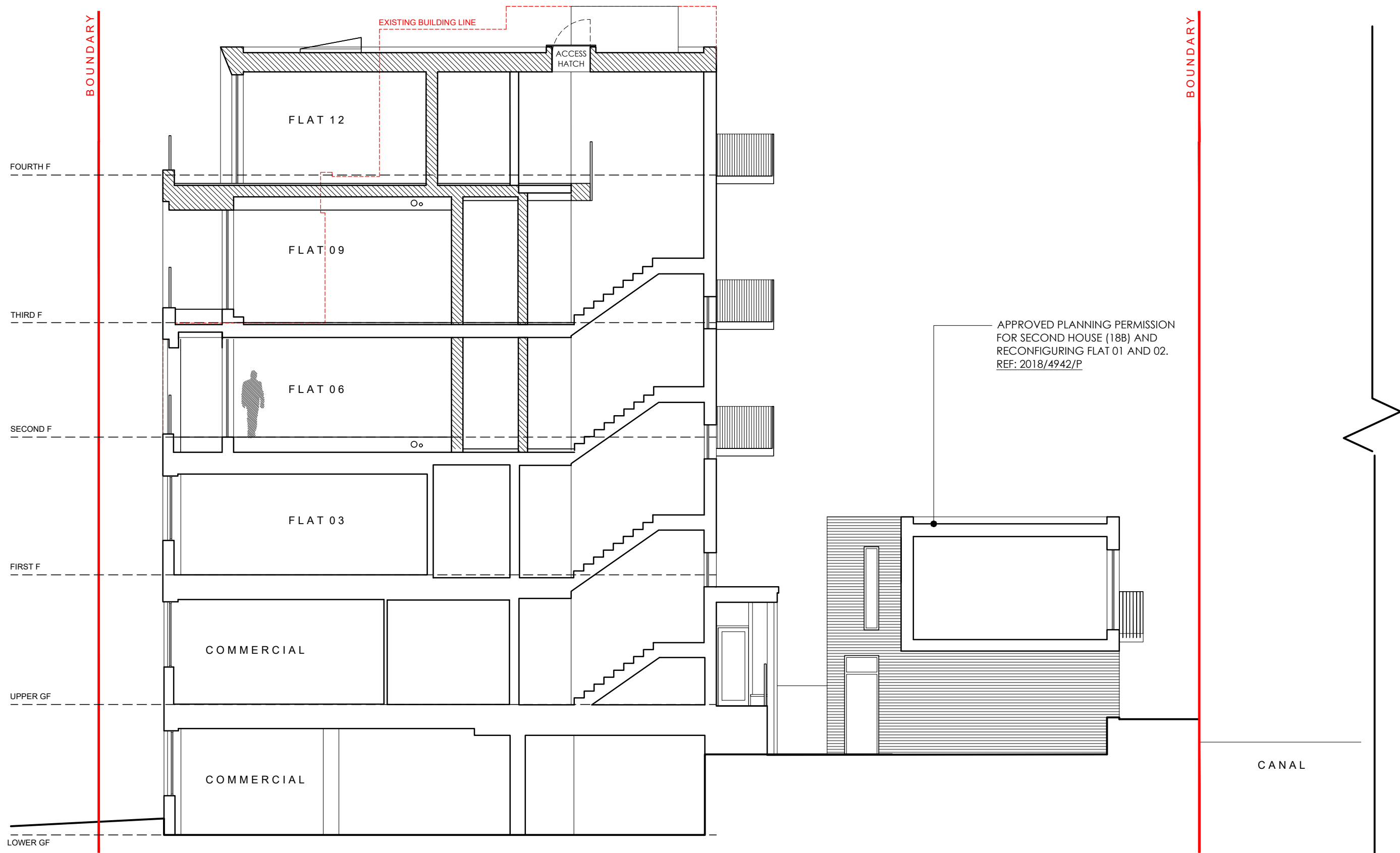
NO. 16



tasou
associates architects + structural engineers

4 Amwell Street, London. EC1R 1UG T:020 7713 7070 F:020 7713 7071 E:tasou@tasou.co.uk

project	1517- St Pancras Way (18-20)		
dwg title	PROPOSED SECTION AA		
job no.	1744	dwg no.	PA.05
date	Sept 2021	scale @ A3	1:100



tasou
associates

architects + structural engineers
4 Amwell Street, London. EC1R 1UG T:020 7713 7070 F:020 7713 7071 E:tasou@tasou.co.uk

project	1517- St Pancras Way (18-20)		
dwg title	PROPOSED SECTION BB		
job no.	1744	dwg no.	PA.06
date	Sept 2021	scale @ A3	1:100
		rev.	-

Do not scale off this drawing - All areas and dimensions are approximate and subject to site survey.
© copyright of tasou associates

BOUNDARY

BOUNDARY

EXISTING BUILDING LINE



NO. 22

18-20 ST PANCRAS WAY

NO. 16

tasou
associates

architects + structural engineers

4 Amwell Street, London. EC1R 1UG T:020 7713 7070 F:020 7713 7071 E:tasou@tasou.co.uk



project	1517- St Pancras Way (18-20)		
dwg title	PROPOSED STREET ELEVATION		
job no.	1744	dwg no.	PA.07
date	Sept 2021	scale @ A3	1:100



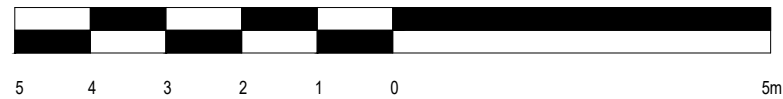
NO. 16

18-20 ST PANCRAS WAY

APPROVED PLANNING PERMISSION
FOR SECOND HOUSE (18B) AND
RECONFIGURING FLAT 01 AND 02.
REF: 2018/4942/P

tasou
associates architects + structural engineers

4 Amwell Street, London. EC1R 1UG T:020 7713 7070 F:020 7713 7071 E:tasou@tasou.co.uk



project	1517- St Pancras Way (18-20)		
dwg title	PROPOSED CANAL ELEVATION		
job no.	1744	dwg no.	PA.08
date	Sept 2021	scale @ A3	1:100



tasou
associates architects + structural engineers

4 Amwell Street, London. EC1R 1UG T:020 7713 7070 F:020 7713 7071 E:tasou@tasou.co.uk



project	1517- St Pancras Way (18-20)		
dwg title	PROPOSED LONG STREET ELEVATION		
job no.	1744	dwg no.	PA.09 rev.
date	Sept 2021	scale @ A3	1:250