

project	1517- St Pancras Way (18-20)		
dwg title	LOWER GROUND FLOOR		
job no.	1744	dwg no.	EX.01
date	Aug 2019	scale @ A3	1:100

Do not scale off this drawing - All areas and dimensions are approximate and subject to site survey.
© copyright of tasou associates

NO.22

A

COMMERCIAL

LINE OF EXTERNAL STAIRCASE TO BE DEMOLISHED ASSOCIATED WITH PLANNING APPLICATION 2018/4942/P
LINE OF SUB STATION TO BE DEMOLISHED

APPROVED PLANNING PERMISSION FOR SECOND HOUSE (18B) AND RECONFIGURING FLAT 01 AND 02.
REF: 2018/4942/P

CANAL

COURTYARD

LIFT

B

B

18A HOUSE

RESIDENTIAL ENTRANCE

REFUSE

1280L

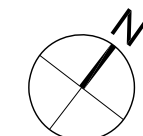
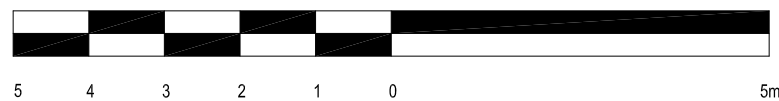
1280L

NO.16

A

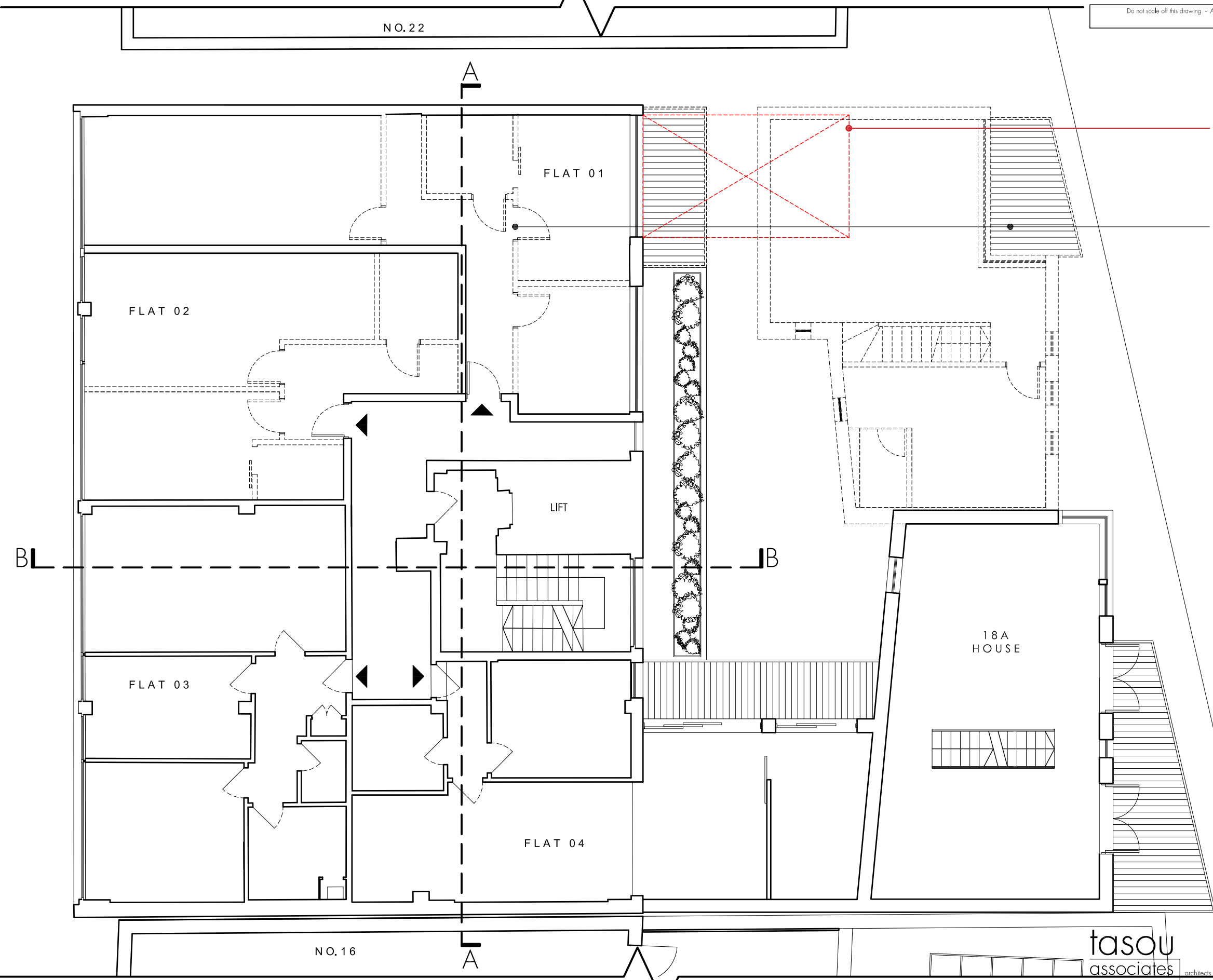
tasou
associates architects + structural engineers

4 Amwell Street, London. ECR 1UG T:020 7713 7070 F:020 7713 7071 E:tasou@tasou.co.uk



project	1517- St Pancras Way (18-20)		
dwg title	UPPER GROUND FLOOR		
job no.	1744	dwg no.	EX.02
date	Aug 2019	scale @ A3	1:100

Do not scale off this drawing - All areas and dimensions are approximate and subject to site survey.
© copyright of tasou associates



LINE OF EXTERNAL STAIRCASE TO BE DEMOLISHED ASSOCIATED WITH PLANNING APPLICATION [2018/4942/F](#)

APPROVED PLANNING PERMISSION FOR SECOND HOUSE (18B) AND RECONFIGURING FLAT 01 AND 02. REF: [2018/4942/P](#)

B

B

A

A

NO. 22

NO. 16

FLAT 01

FLAT 02

LIFT

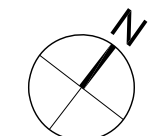
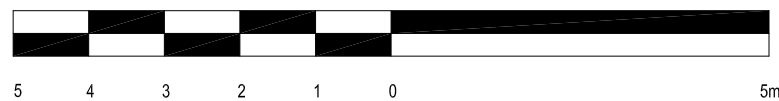
18A HOUSE

FLAT 03

FLAT 04

tasou
associates architects + structural engineers

4 Amwell Street, London. EC1R 1UG T:020 7713 7070 F:020 7713 7071 E:tasou@tasou.co.uk



project	1517- St Pancras Way (18-20)		
dwg title	FIRST FLOOR		
job no.	1744	dwg no.	EX.03
date	Aug 2019	scale @ A3	1:100

Do not scale off this drawing - All areas and dimensions are approximate and subject to site survey.
© copyright of tasou associates

NO. 22

A

FLAT 05

LINE OF EXTERNAL STAIRCASE TO BE DEMOLISHED ASSOCIATED WITH PLANNING APPLICATION 2018/4942/P

APPROVED PLANNING PERMISSION FOR SECOND HOUSE (18B) AND RECONFIGURING FLAT 01 AND 02. REF: 2018/4942/P

LIFT

B

B

18A HOUSE

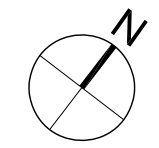
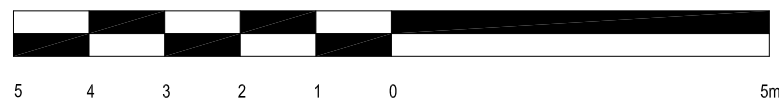
FLAT 06

NO. 16

A

tasou
associates architects + structural engineers

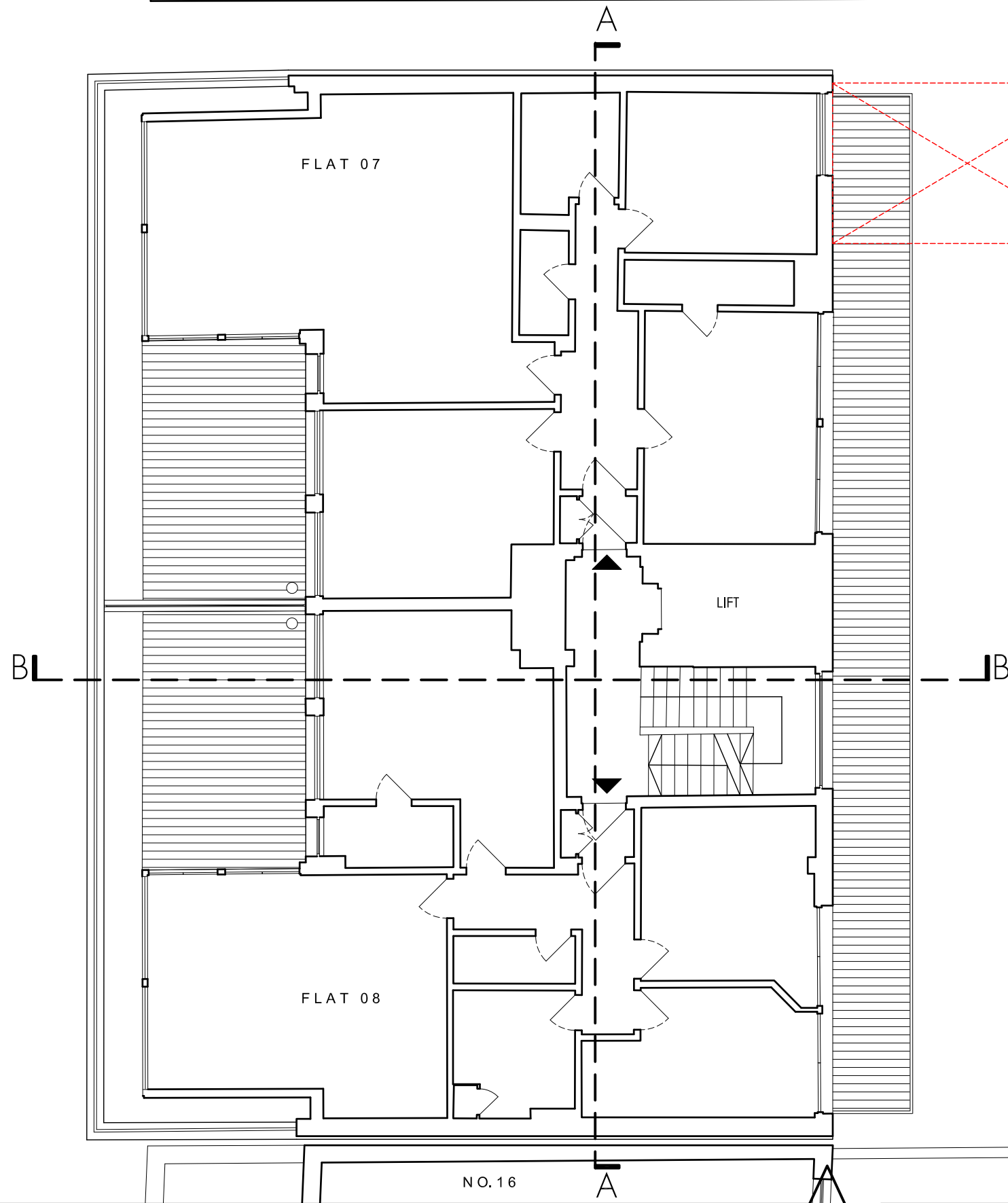
4 Amwell Street, London, ECR 1UG T:020 7713 7070 F:020 7713 7071 E:tasou@tasou.co.uk



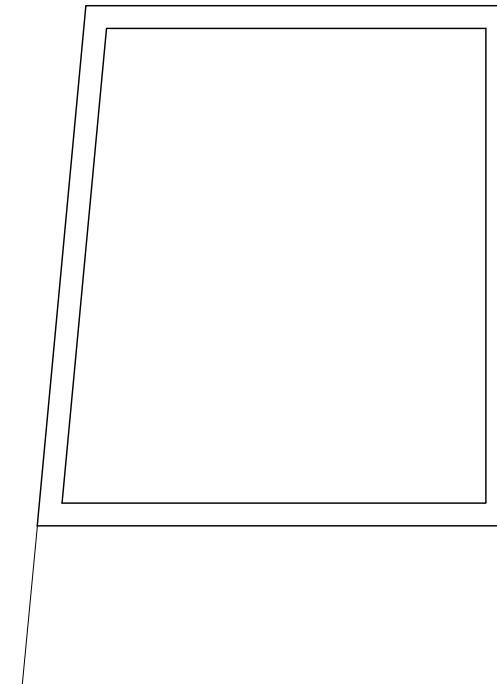
project	1517- St Pancras Way (18-20)		
dwg title	SECOND FLOOR		
job no.	1744	dwg no.	EX.04
date	Aug 2019	scale @ A3	1:100

NO. 22

Do not scale off this drawing - All areas and dimensions are approximate and subject to site survey.
© copyright of tasou associates

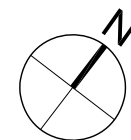
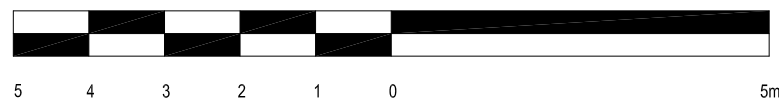


LINE OF EXTERNAL STAIRCASE TO BE DEMOLISHED ASSOCIATED WITH PLANNING APPLICATION [2018/4942/P](#)



tasou
associates architects + structural engineers

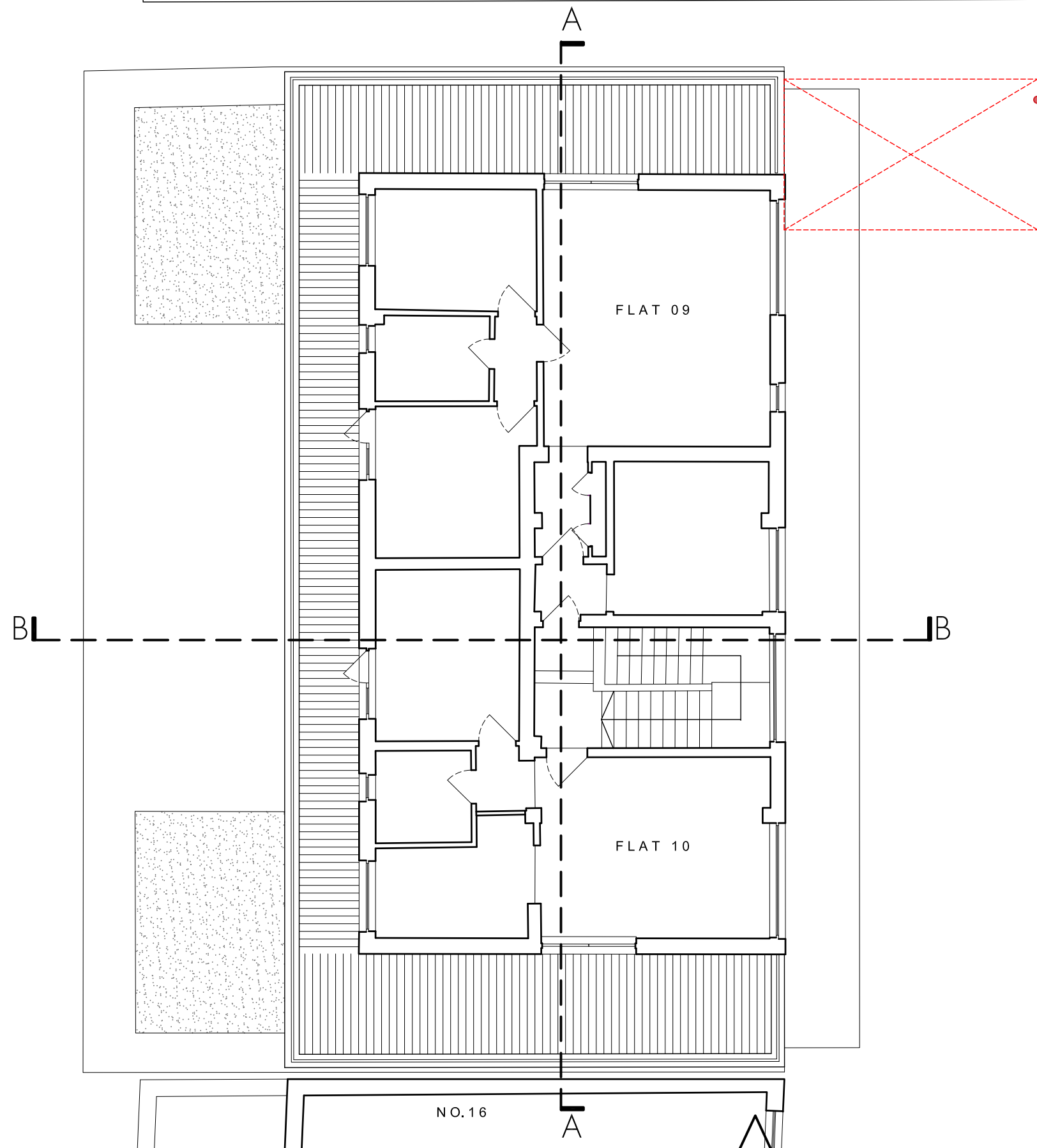
4 Amwell Street, London. EC1R 1UG T:020 7713 7070 F:020 7713 7071 E:tasou@tasou.co.uk



project	1517- St Pancras Way (18-20)		
dwg title	THIRD FLOOR		
job no.	1744	dwg no.	EX.05
date	Aug 2019	scale @ A3	1:100

NO. 22

Do not scale off this drawing - All areas and dimensions are approximate and subject to site survey.
© copyright of tasou associates



LINE OF EXTERNAL STAIRCASE TO BE DEMOLISHED ASSOCIATED WITH PLANNING APPLICATION 2018/4942/P

B

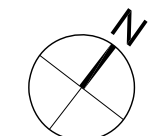
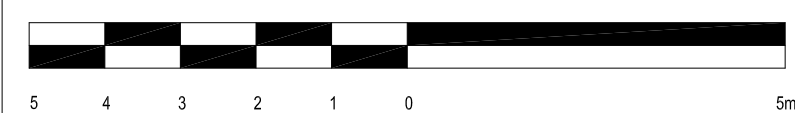
B

NO. 16

A

tasou
associates architects + structural engineers

4 Amwell Street, London. EC1R 1UG T:020 7713 7070 F:020 7713 7071 E:tasou@tasou.co.uk

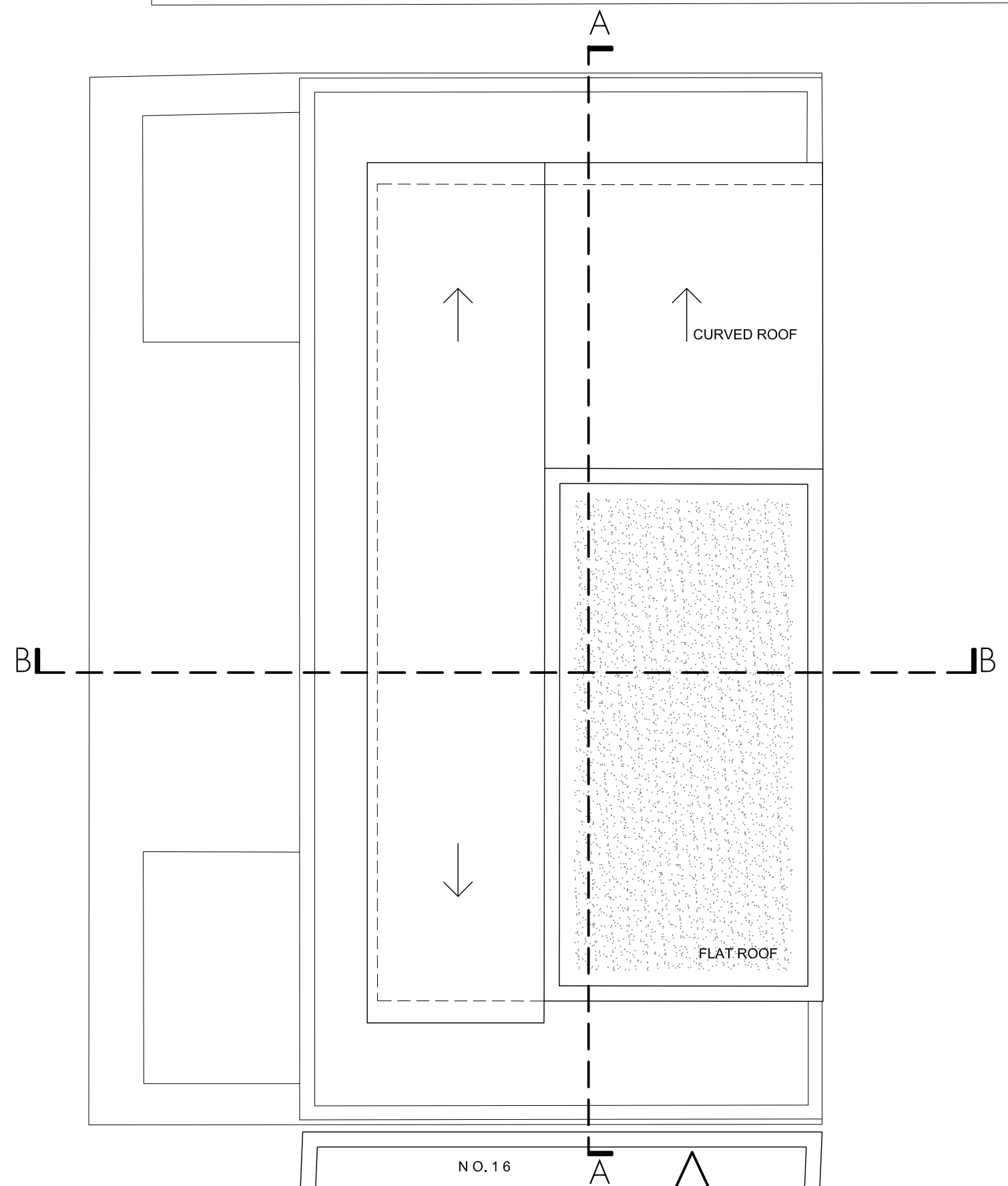


project	1517- St Pancras Way (18-20)		
dwg title	FOURTH FLOOR		
job no.	1744	dwg no.	EX.06
date	Aug 2019	scale @ A3	1:100

P

N.O. 22

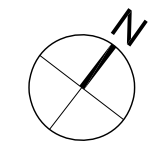
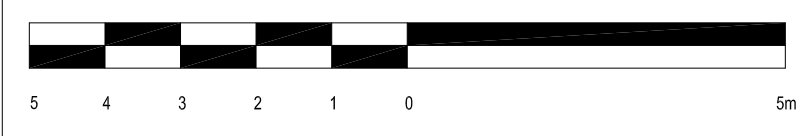
Do not scale off this drawing - All areas and dimensions are approximate and subject to site survey.
© copyright of tasou associates



N.O. 16

tasou
associates architects + structural engineers

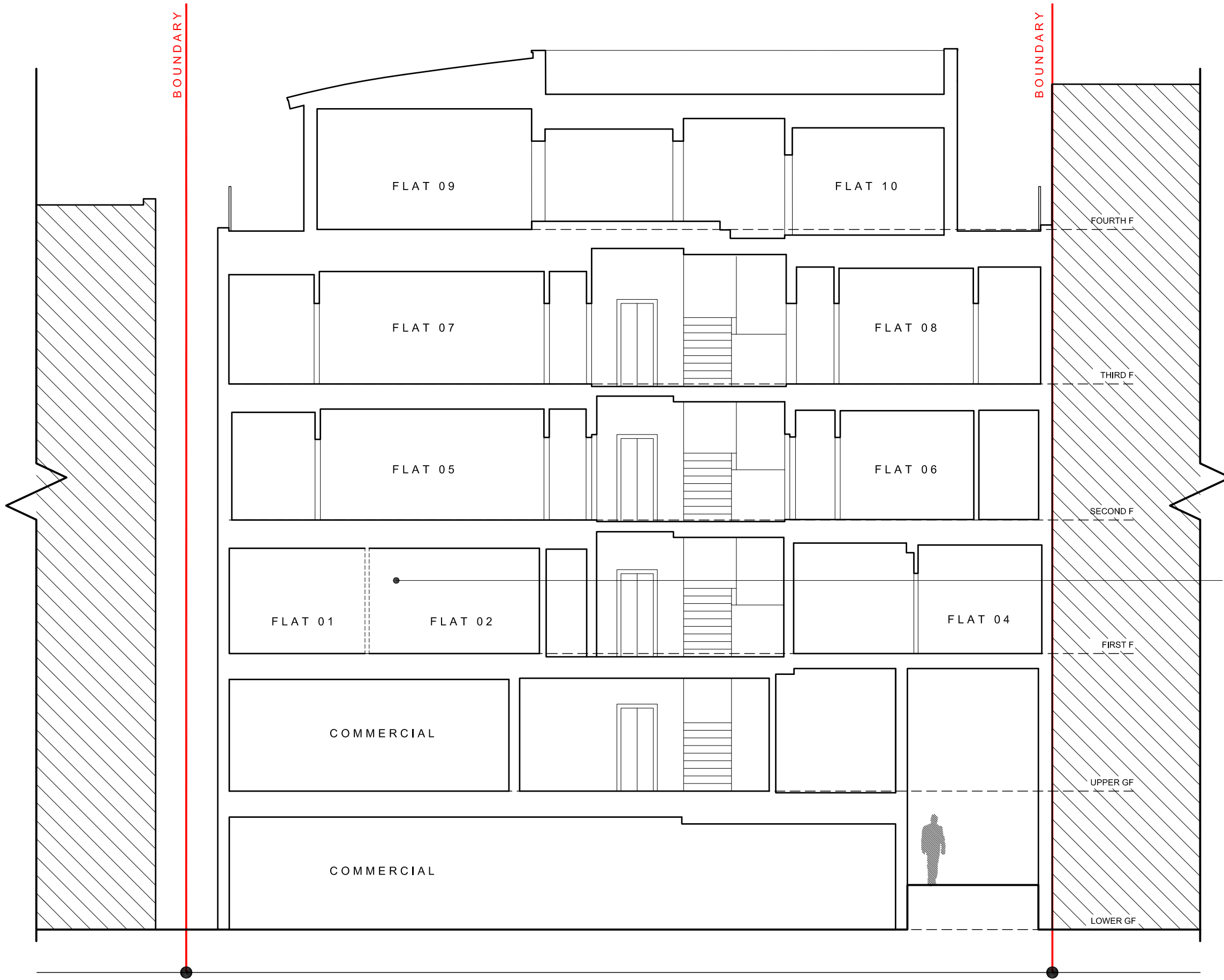
4 Amwell Street, London, EC1R 1UG T:020 7713 7070 F:020 7713 7071 E:tasou@tasou.co.uk



project	1517- St Pancras Way (18-20)		
dwg title	ROOF PLAN		
job no.	1744	dwg no.	EX.07
date	Aug 2019	scale @ A3	1:100

h

Do not scale off this drawing - All areas and dimensions are approximate and subject to site survey.
© copyright of tasou associates

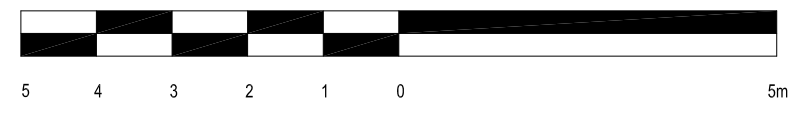


APPROVED PLANNING PERMISSION FOR
SECOND HOUSE (18B) AND
RECONFIGURING FLAT 01 AND 02.
REF: 2018/4942/P

NO. 22

18-20 ST PANCRAS WAY

NO. 16

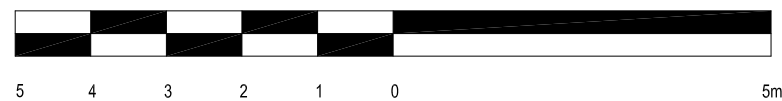
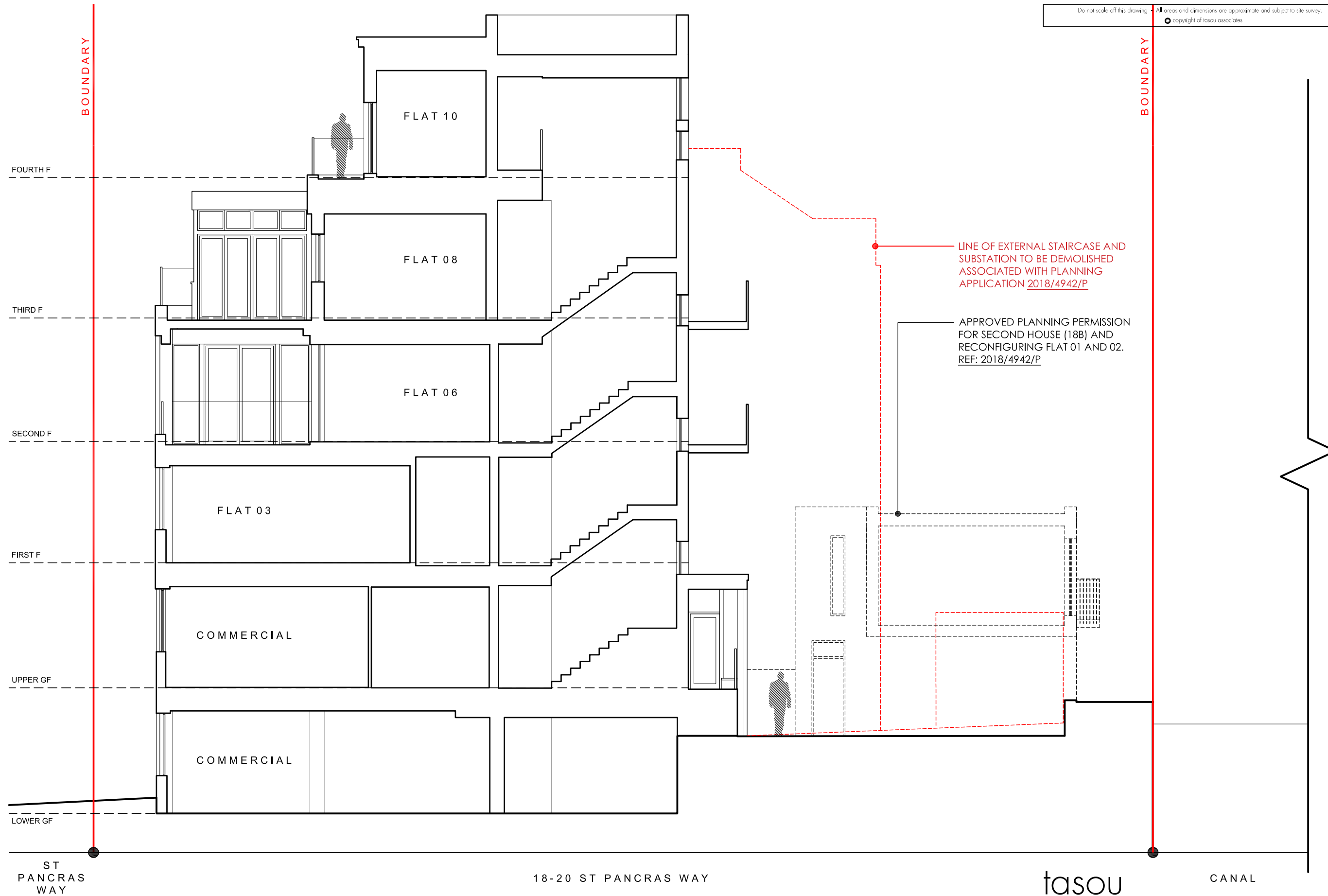


tasou
associates architects + structural engineers

4 Amwell Street, London. ECR 1UG T:020 7713 7070 F:020 7713 7071 E:tasou@tasou.co.uk

project	1517- St Pancras Way (18-20)		
dwg title	SECTION AA		
job no.	1744	dwg no.	EX.08
date	Aug 2019	scale @ A3	1:100

Do not scale off this drawing. All areas and dimensions are approximate and subject to site survey.
© copyright of tasou associates



tasou
associates architects + structural engineers
4 Amwell Street, London, EC1R 1UG T:020 7713 7070 F:020 7713 7071 E:tasou@tasou.co.uk

project	1517- St Pancras Way (18-20)		
dwg title	SECTION BB		
job no.	1744	dwg no.	EX.09
date	Aug 2019	scale @ A3	1:100

Do not scale off this drawing - All areas and dimensions are approximate and subject to site survey.
© copyright of tasou associates

BOUNDARY

BOUNDARY



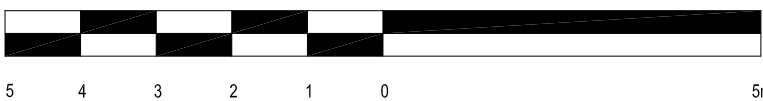
NO. 22

18-20 ST PANCRAS WAY

NO. 16

tasou
associates architects + structural engineers

4 Amwell Street, London, EC1R 1UG T:020 7713 7070 F:020 7713 7071 E:tasou@tasou.co.uk



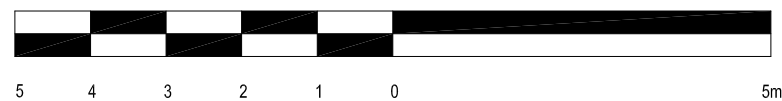
project	1517- St Pancras Way (18-20)		
dwg title	STREET ELEVATION		
job no.	1744	dwg no.	EX.10
date	Aug 2019	scale @ A3	1:100



NO.16

18-20 ST PANCRAS WAY

NO.22



tasou
associates architects + structural engineers

4 Amwell Street, London, EC1R 1UG T:020 7713 7070 F:020 7713 7071 E:tasou@tasou.co.uk

project	1517- St Pancras Way (18-20)		
dwg title	CANAL ELEVATION (Sept 2019)		
job no.	1744	dwg no.	EX.11
date	Aug 2019	scale @ A3	1:100



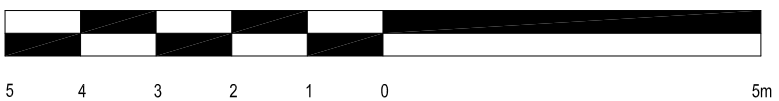
LINE OF EXTERNAL STAIRCASE TO BE DEMOLISHED ASSOCIATED WITH PLANNING APPLICATION 2018/4942/P

APPROVED PLANNING PERMISSION FOR SECOND HOUSE (18B) AND RECONFIGURING FLAT 01 AND 02. REF: 2018/4942/P

NO. 16 18-20 ST PANCRAS WAY NO. 22

tasou
associates architects + structural engineers

4 Amwell Street, London, EC1R 1UG T:020 7713 7070 F:020 7713 7071 E:tasou@tasou.co.uk



project	1517- St Pancras Way (18-20)		
dwg title	CANAL ELEVATION (Including Planning 2018/4942/P)		
job no.	1744	dwg no.	EX.12
date	Aug 2019	scale @ A3	1:100



tasou
associates architects + structural engineers

4 Amwell Street, London, EC1R 1UG T:020 7713 7070 F:020 7713 7071 E:tasou@tasou.co.uk

project	1517- St Pancras Way (18-20)		
dwg title	STREET ELEVATION		
job no.	1744	dwg no.	EX.13
date	Aug 2019	scale @ A3	1:250

