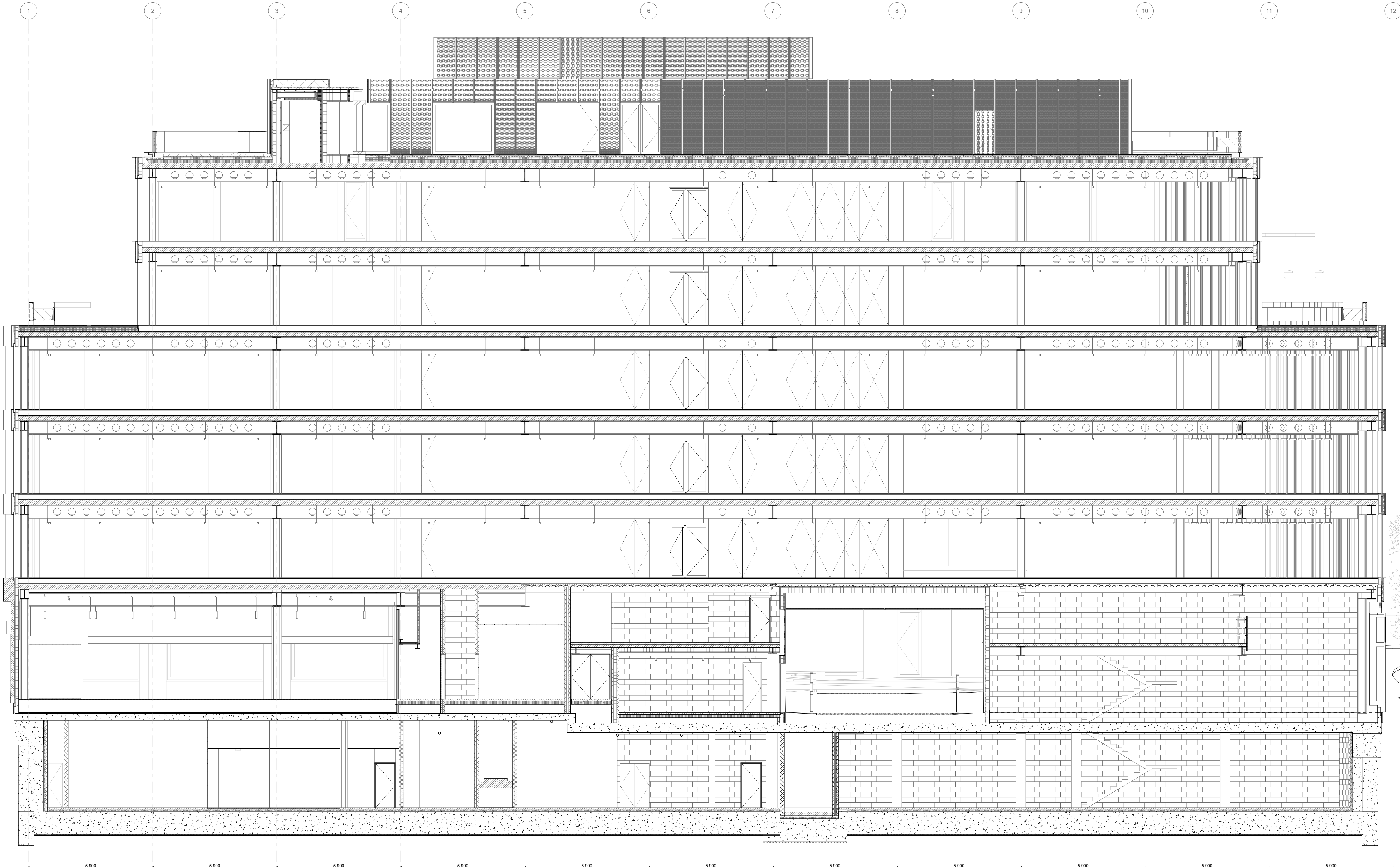


Section AA5



Section AA6

General notes:
All dimensions are approximate and subject to a full measured survey
All drawings to be read in conjunction with Structural Engineers and Services Engineers drawings. Any discrepancies are to be highlighted and brought to the attention of the Architects.

Health and safety notes:

Manual handling
Avoid as far as reasonably practicable hazardous handling operations, including heavy lifting loads and working over shoulder height.

Confined space / Working at height
Safe access to be provided when working at height.
Be aware of restrictions placed on movement when working with temporary access equipment.

Temporary propping
Care to be taken when fixing vertical elements to allow for secure fixing when fitting.

Personal protective equipment
Appropriate equipment to be worn at all times while on site.

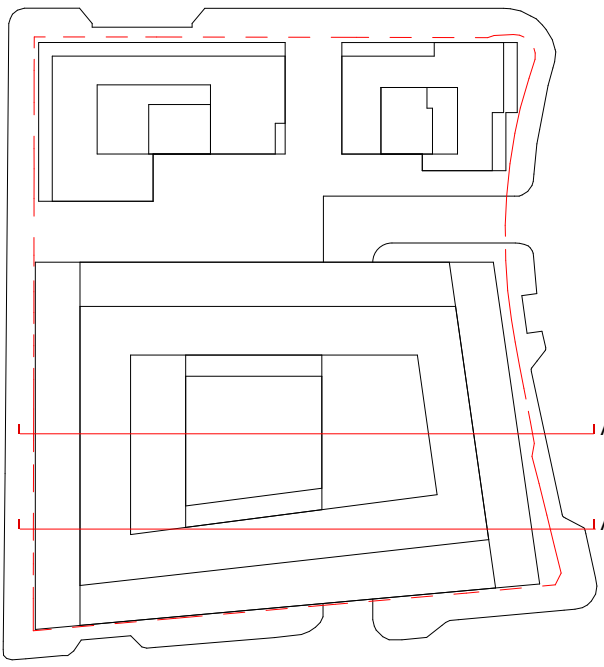
Material hatches:

| | | | |
|--|-------------------|--|-------------------|
| | Screed | | Dropped Ceiling |
| | Blockwork | | Brick |
| | Stone | | Concrete, Precast |
| | Insulation, Soft | | Concrete, In-situ |
| | Insulation, Rigid | | Steel |

Notes:

| INDEX | DATE | REASON FOR ISSUE | NAME |
|-------|----------|----------------------------|------|
| T01 | 26/06/20 | PCSA Tender | LDV |
| T02 | 22/07/20 | Stage 4 Design Freeze | LDV |
| T03 | 30/10/20 | Stage 4 | LDV |
| T04 | 11/11/20 | Stage 4 | LDV |
| T05 | 04/12/20 | Stage 4 - Drawing Revision | LDV |
| P04 | 09/09/21 | Stage 4 - Planning update | GP |

Caruso St John Architects



477 St Pancras Commercial Centre

General Arrangement - Section - AA5/AA6

INFORMATION

| | | | | | | | | |
|-------------|-----------------|-----------|-----------|-----------|----------|-------------|-----------|------------|
| 477 | CSJ | 00 | ZZ | SC | A | 3204 | D2 | P04 |
| Project No. | Issue | Link | Level | Type | Revision | Section | Issue | Revision |
| 1:100 | 1189 x 841 | 12/06/20 | 09/09/21 | GP | JH | | | |
| Scale | Size A1 (11 mm) | Date | Revised | Drawn | Created | | | |

| | |
|-----------------|-------------------------|
| STAGE 04 | ±0.00 = 0.00 AOD |
| Project phase | Project datum |

Client:
WRE
8 Bedford Meads, London, W1D 3EH

Project manager:
Blackburn & Co.
No 1, Clerk Street, London, SE1 8DG

Architect:
Caruso St John Architects LLP
1 Cusack Street, London E2 8AG, UK, +44 (0)20 7813 3161, london@carusostjohn.com

Planning consultant:
Gerald Eve
77 Redbank Street, London, W1G 8AY

Structural engineer:
AKT II
White Collar Factory 1 Old Street Yard London EC1Y 8AF

Building services:
Norman Disney Young
4 Chiswell Street, London EC1Y 4LP, United Kingdom

Quantity surveyor:
Expens
Montemario 5-23 Old Street London EC1Y 9AL

Registered Office: Caruso St John LLP is a limited liability partnership registered in England No. OC30581