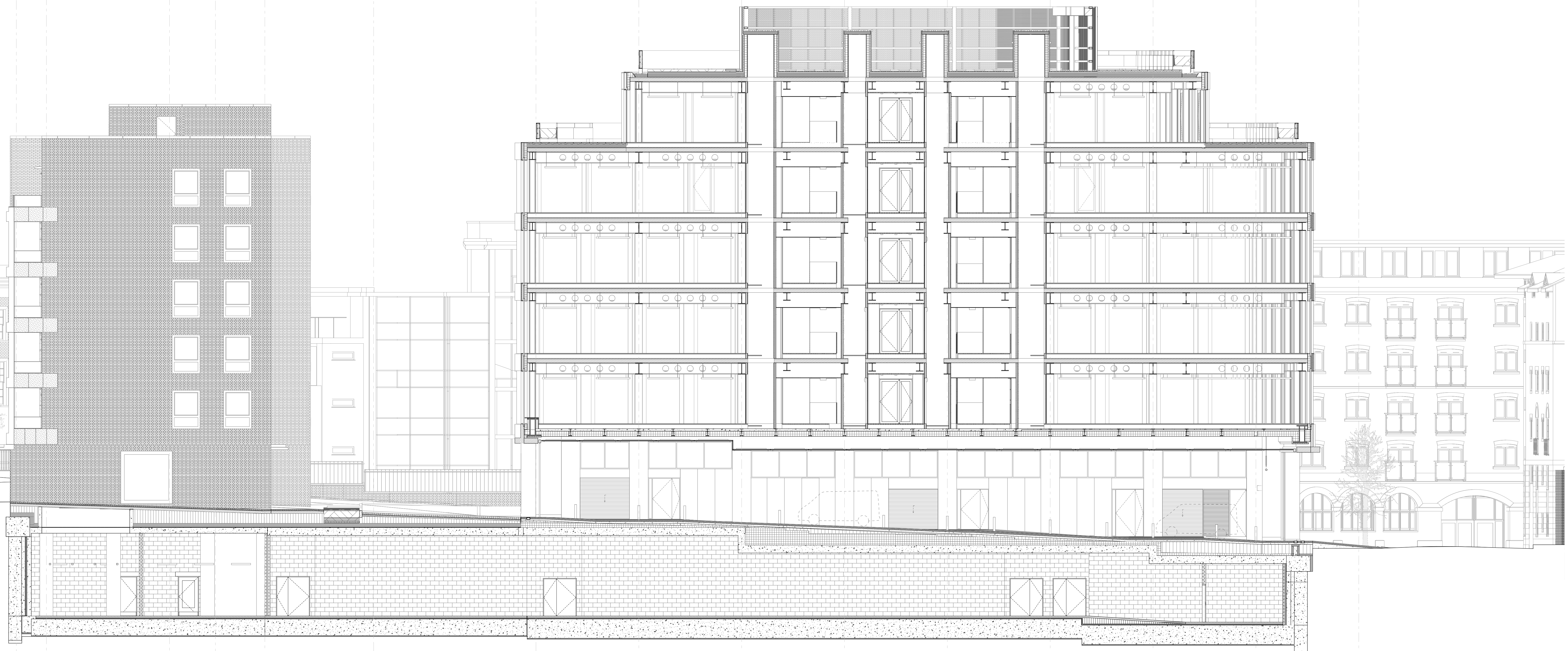


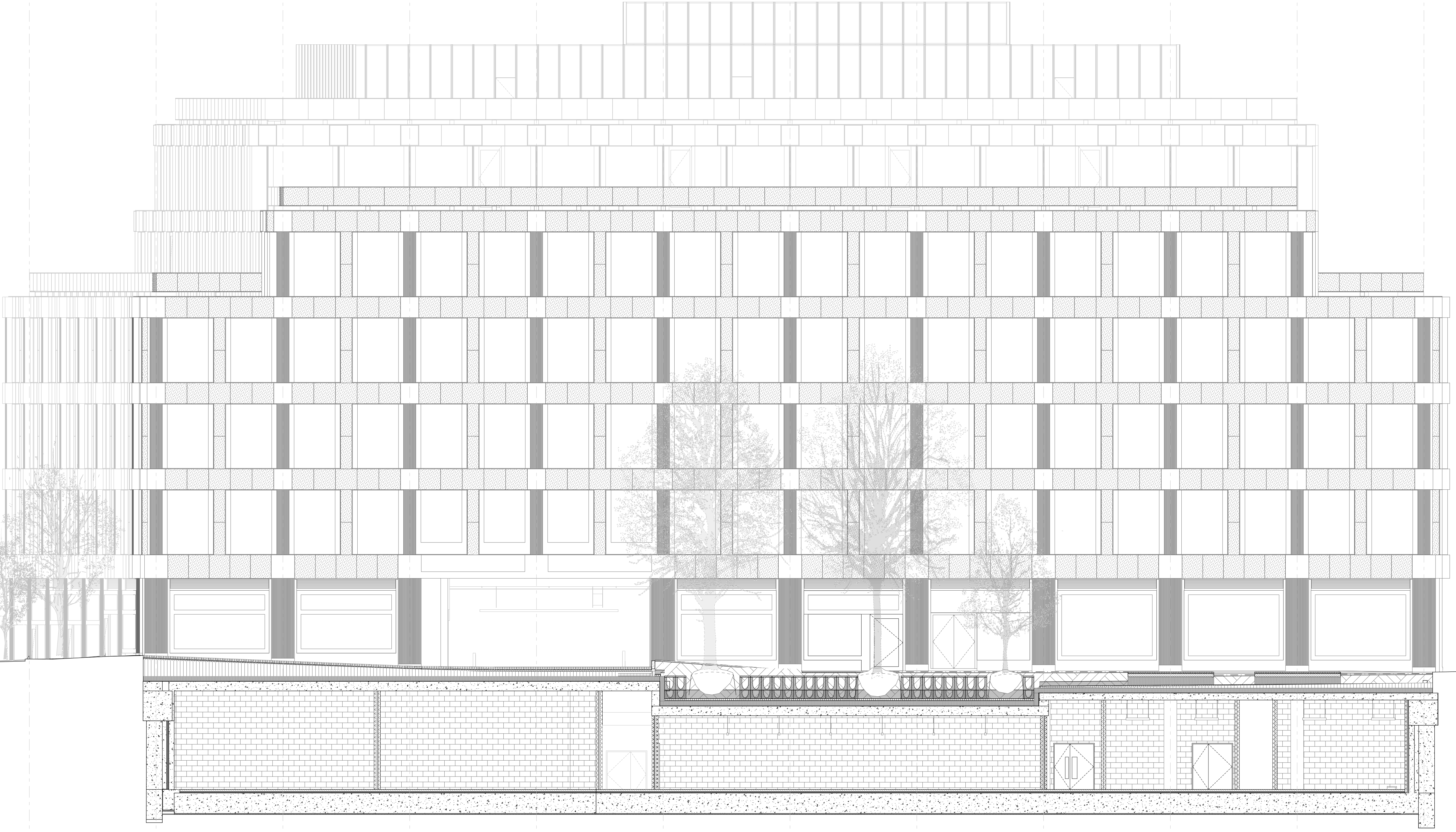
O P N M L K J H G F E D C B A



Section BB3

1.750 7.900 3.200 2.800 6.100 9.200 5.800 5.800 5.800 5.800 5.800 5.800 5.800 5.800 5.800

12 11 10 9 8 7 6 5 4 3 2 1



Section AA3

5.800 5.800 5.800 5.800 5.800 5.800 5.800 5.800 5.800 5.800 5.800 5.800 5.800 5.800 5.800

General notes:
All dimensions are approximate and subject to a full measured survey
All drawings to be read in conjunction with Structural Engineers and Services Engineers drawings. Any discrepancies are to be highlighted and brought to the attention of the Architects.

Health and safety notes:
Manual handling
Avoid as far as reasonably practicable hazardous handling operations, including heavy lifting loads and working over shoulder height.

Confined space / Working at height
Safe access to be provided when working at height.
Be aware of restrictions placed on movement when working with temporary access equipment.

Temporary propping
Care to be taken when fixing vertical elements to allow for secure fixing when fitting.

Personal protective equipment
Appropriate equipment to be worn at all times while on site.

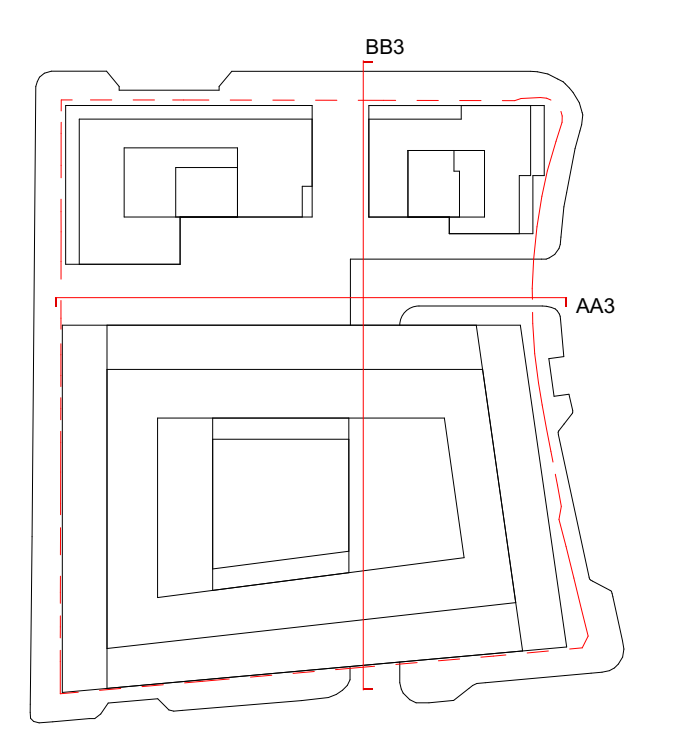
Material hatches:

| | | | |
|--|-------------------|--|-------------------|
| | Sored | | Dropped Ceiling |
| | Blockwork | | Brick |
| | Stone | | Concrete, Precast |
| | Insulation, Soft | | Concrete, In-situ |
| | Insulation, Rigid | | Steel |

Notes:

| INDEX | DATE | REASON FOR ISSUE | NAME |
|-------|----------|----------------------------|------|
| T01 | 26/06/20 | PCSA Tender | LDV |
| T02 | 22/07/20 | Stage 4 Design Freeze | LDV |
| T03 | 26/10/20 | Stage 4 | LDV |
| T04 | 11/11/20 | Stage 4 | LDV |
| T05 | 04/12/20 | Stage 4 - Drawing Revision | LDV |
| P04 | 06/09/21 | Stage 4 - Planning update | GP |

Caruso St John Architects



477 St Pancras Commercial Centre
General Arrangement - Section - AA3/BB3

| | | | | | | | | |
|-------------|----------------------|----------|----------|-------|-----------|------|--------|----------|
| 477 | CSJ | 00 | ZZ | SC | A | 3202 | D2 | P04 |
| Project No. | Location | Link | Level | Type | Structure | Room | Storey | Function |
| 1:100 | 1189 x 841 | 12/06/20 | 09/09/21 | GP | JH | | | |
| Scale | Sheet No. (of total) | Date | Revised | Drawn | Checked | | | |

STAGE 04 ±0.00 = 0.00 AOD

Client:
WRE
8 Richmond Mews, London, W1D 3DH

Project manager:
Blackburn & Co.
No 1, Clink Street, London, SE1 9EG

Architect:
Caruso St John Architects LLP
1 Cove Street, London E2 8AG, UK, +44 (0)20 7933 3161, london@carusostjohn.com

Planning consultant:
Gerald Evans
72 Redbank Street, London, W1D 6AY

Structural engineer:
AKT II
White Colver Factory 1 Old Street Yard London EC1Y 6AF

Building services:
Norman Delany Young
4 Chiswell Street, London EC1Y 4UP, United Kingdom

Quantity surveyor:
Expans
Mortimore's 5-23 Old Street London EC1Y 9RL