

Elevation - St Pancras Way

General notes:
 All dimensions are approximate and subject to a full measured survey
 All drawings to be read in conjunction with Structural Engineers and Services Engineers drawings. Any discrepancies are to be highlighted and brought to the attention of the Architects.

Health and safety notes:

Manual handling
 Avoid as far as reasonably practicable hazardous handling operations, including heavy lifting loads and working over shoulder height.

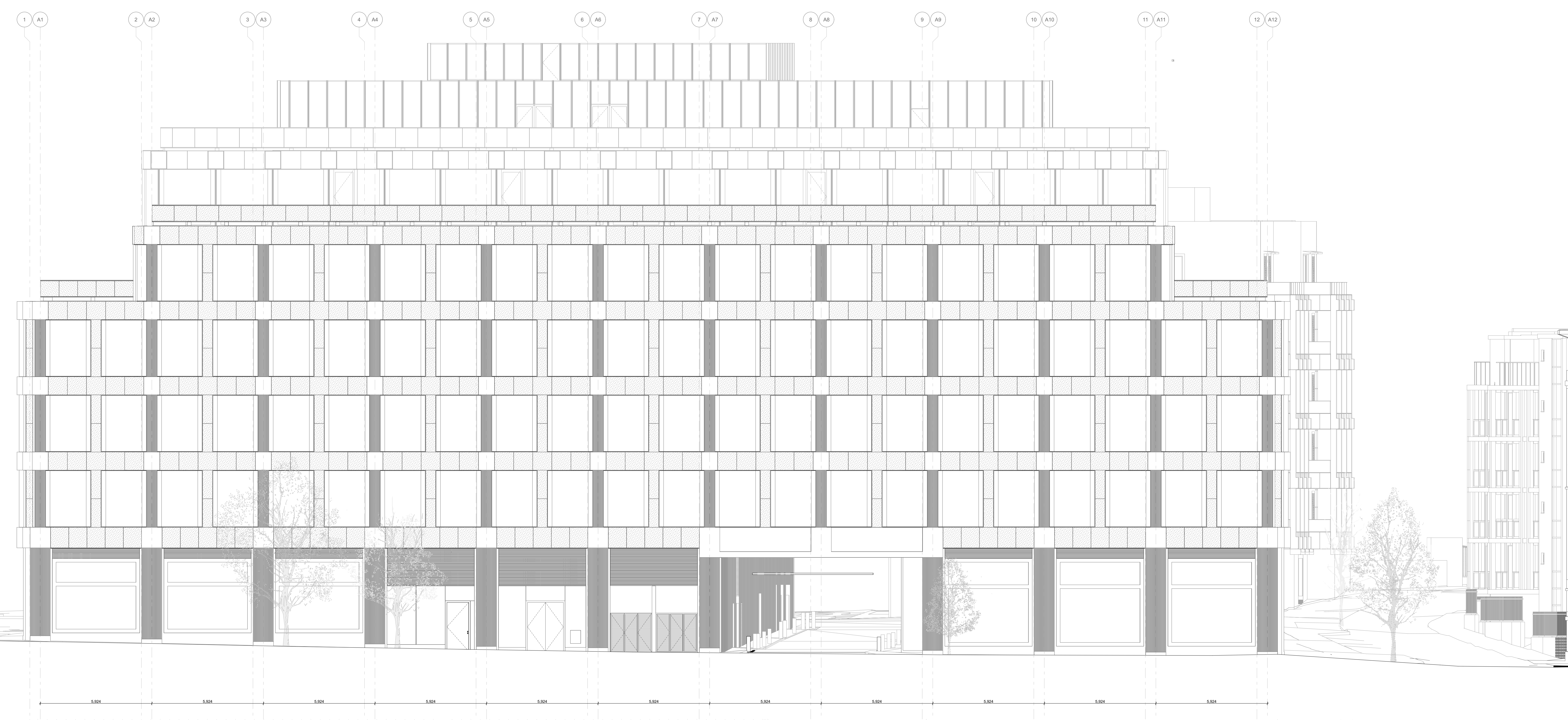
Confined space / Working at height
 Safe access to be provided when working at height.
 Be aware of restrictions placed on movement when working with temporary access equipment.

Temporary propping
 Care to be taken when fixing vertical elements to allow for secure fixing when fitting.

Personal protective equipment
 Appropriate equipment to be worn at all times while on site.

- Material hatches:**
- Smead
 - Blockwork
 - Stone
 - Insulation, Soft
 - Insulation, Rigid
 - Dropped Ceiling
 - Brick
 - Concrete, Precast
 - Concrete, In-situ
 - Steel

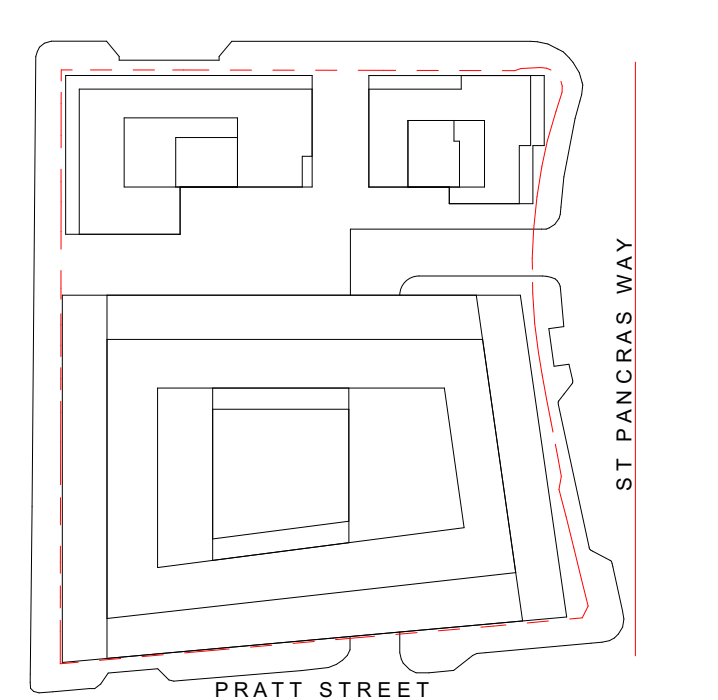
Notes:



Elevation - Pratt Street

INDEX	DATE	REASON FOR ISSUE	NAME
T05	17/05/21	Stage 4 - VE Drawing Revision	LDV
P03	06/07/21	Planning update	LDV

Caruso St John Architects



477 St Pancras Commercial Centre
 General Arrangement - Elevation - St Pancras Way & Pratt St INFORMATION

477	CSJ	00	ZZ	EL	A	3301	S1	P03
Project No.	Client	Link	Level	View	Section	Area	Sheet	Revision
1:100	1189 x 841	12/06/20	06/07/21	LDV	JH			
Scale	Sheet No. (of total)	Date	Revised	Drawn	Checked			

STAGE 04 ±0.00 = 0.00 AOD

Project client:
 Client: WRE
 8 Redwood Mews, London, W1D 3DH

Project manager:
 Blackburn & Co.
 No 1, Clerk Street, London, SE1 9DG

Architect:
 Caruso St John Architects LLP
 1 Cowie Street, London E2 8AG, UK, +44 (0)20 7933 3161, london@carusostjohn.com

Planning consultant:
 Gerald Evans
 72 Redbus Street, London, W1Q 6AY

Structural engineer:
 AKT II
 White Colar Factory 1 Old Street Yard London EC1Y 6AF

Building services:
 Norman Delany Young
 1 Angel Court, London EC2R 7HJ

Quantity surveyor:
 Expans
 Montpelier 5-23 Old Street London EC1Y 9RL

Registered Office: Caruso St John LLP is a limited liability partnership registered in England No. 0232881