





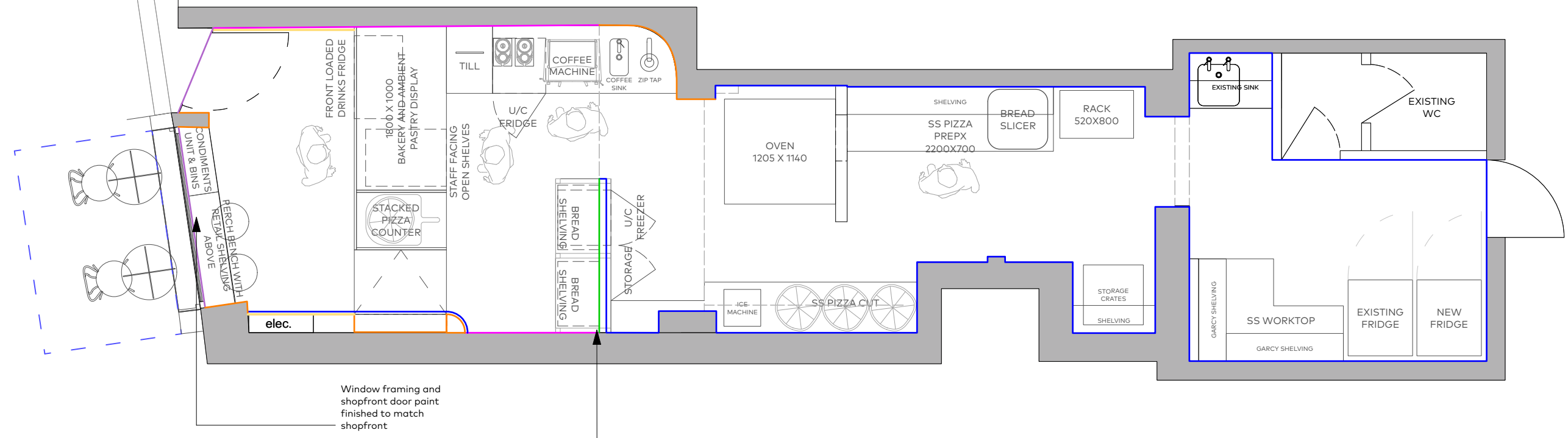


KEY	DESCRIPTION
	<b>P 2</b> LIGHT BLUE PAINT
	<b>P 3</b> CREAM PAINT
	<b>T 2</b> WHITE TILES VERTICAL STACKED BOND, SEE ELEVATION FOR MORE INFO
	<b>T 1</b> BLUE TILES, VERTICAL STACKED BOND, SEE ELEVATION FOR MORE INFO
	<b>S7 P1</b> FLUTED PANEL WALL CLADDING AT LOW LEVEL PAINTED OUT IN DARK TEAL
	<b>SF1</b> BRAND TEAL SHOPFRONT PAINT

Notes:  
**FULL SITE SURVEY REQUIRED PRIOR TO STARTING WORKS ON SITE, EXISTING DIMENSIONS SHOWN AS INDICATIVE**



Revision Notes:  
**REV A - SCALE BAR ADDED, TITLE BLOCK AMENDED**

**1 PROPOSED WALL FINISHINGS**  
 Scale: 1:50

**T2** New wall and front face of bulkhead (to line through with wall) clad out in tiles to create a backdrop for bread shelving

Window framing and shopfront door paint finished to match shopfront



Suite 3.02, Grand Union Studios, 332 Ladbrooke Grove, London, W10 5AD  
 +44 (0) 20 7183 8326 | theyardcreative.com

For design intent only. No alterations to design specifications may be made without prior consent of The Yard Creative Ltd. Do not scale from this drawing. Verify all dimensions on site, contractors to double check before commencing work. All dimensions in mm. ©The Yard Creative Ltd 2021

**BREAD AHEAD**

Project: **BREAD AHEAD HAMPSTEAD**

Drawing: **PROPOSED DECORATIONS PLAN**

Drawing No: **102**

Date: **26.08.2021** Revision: **A**

Drawn: **AB** Checked: **LP**

Scale @A3: **1:50@A3** Status: **DESIGN**

