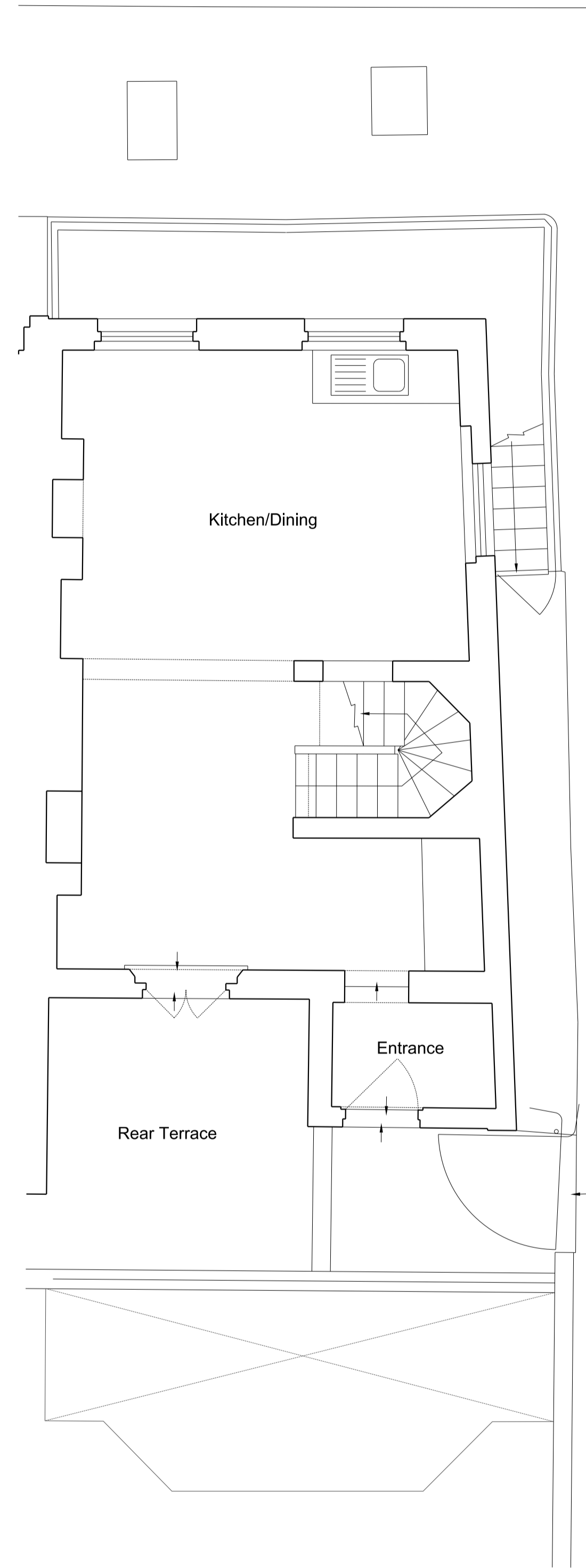
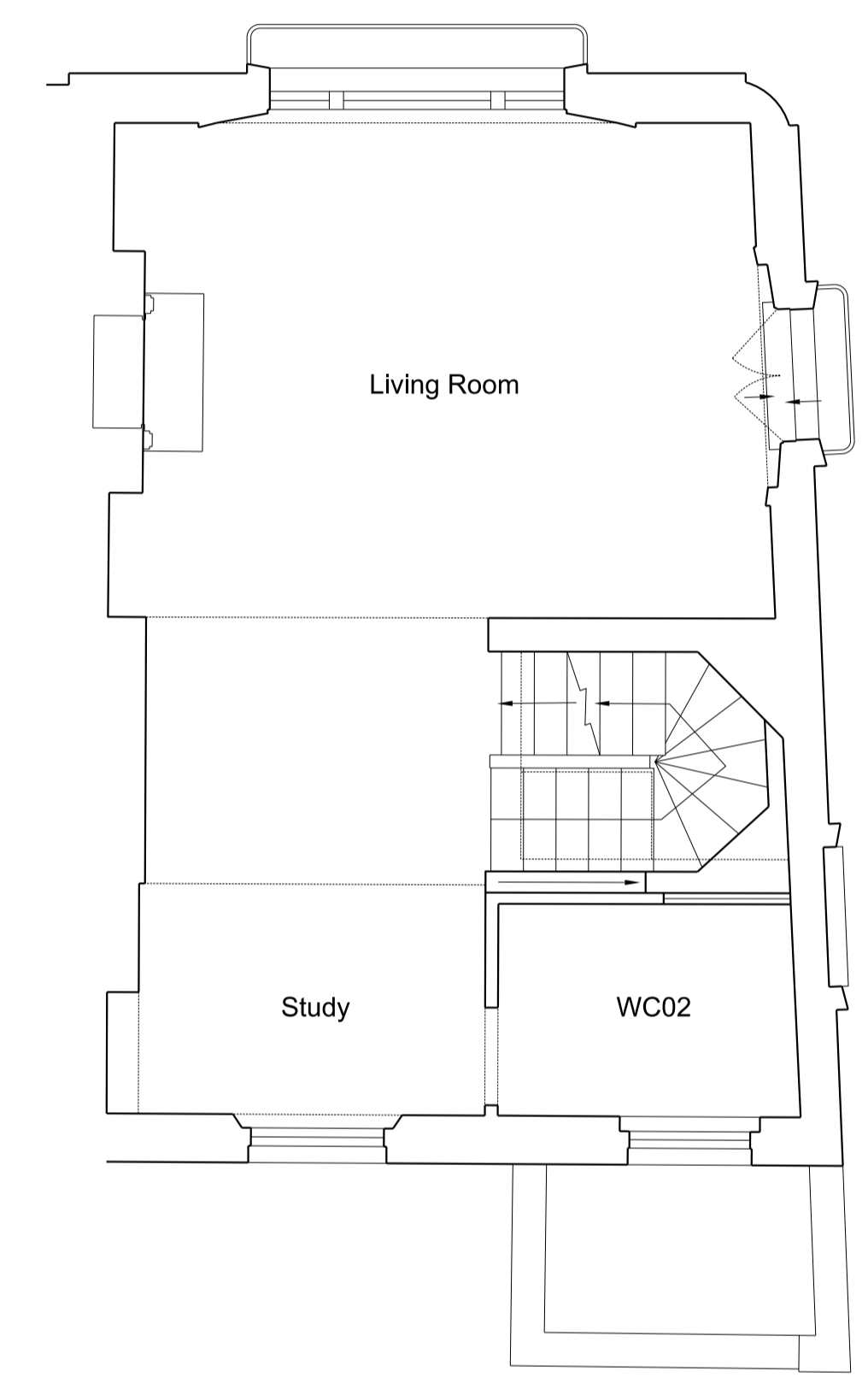


Lower Ground Floor Plan

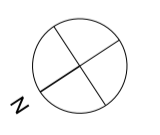


Ground Floor Plan



First Floor Plan

Rev. * 29/09/21 Planning Application



Scale: 0 0.5 1 1.5 2 2.5m

Planning Issue

Existing
Lower Ground, Ground + First Floor Plan

159_Princess Road
Casswell Bank Architects
3a Trafalgar Mews, London, E9 5JG
tel 020 8525 1395

Scale Date Drwg
1:50 @ A1 29.09.21 159_L02_01