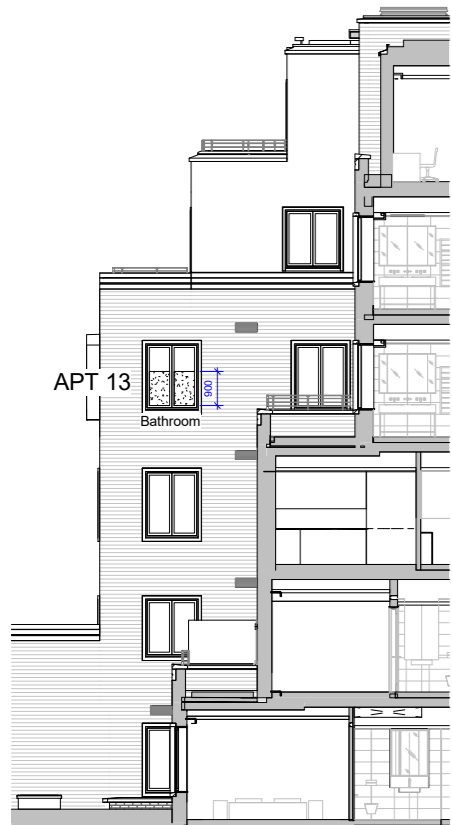




1 Section West Elevation (lightwell)-Overlooking  
1 : 100



3 Part North Elevation  
1 : 100

Note: Obscuring not required for planning



2 East Site Elevation - Overlooking  
1 : 100

- Key
- Window designated as 'obscured' under condition 8
  - No overlooking apparent
  - Some overlooking apparent
- Direction of obscure / clear glazing MFW0055
- Direction of obscure / clear glazing MFY2555
- Area of plain (light) obscured film

- Level Roof 133755
- Level 5 Fifth Floor 130180
- Level 4 Fourth Floor 126805
- Level 3 Third Floor 123430
- Level 2 Second FFL 120055
- Level 1 First FFL 116680
- Level 0 Ground Floor 113305
- Level -1 Basement 109930

General notes:

This drawing is copyright of KSR architects. This drawing must be read in conjunction with the Designer's Risk Assessment, specification and all other relevant documentation and drawings. KSR architects accept no liability for any expense, loss or damage of whatever nature and however arising from any variation made to this drawing or in the execution of the work to which it relates which has not been referred to them and their approval obtained.

Do not scale from this drawing or the digital data, only figured dimensions are to be used. For Planning refer to linear scale. Check all dimensions on site prior to carrying out any works - advise of any discrepancy

Notes/Legends

A MMA Application dated June 2020 30.09.21 GJ

Rev	Description	Date	Chd
1	KSR architects		

Stamp

Key Plan

**KSR ARCHITECTS & INTERIOR DESIGNERS**  
KSR Architects LLP  
14 Grosvenor Street  
London W1A 0BP  
t: +44 (0)20 7882 5500  
e: info@ksrarchitects.com  
www.ksrarchitects.com

Project:  
**29 NEW END**

Title:  
**Analysis of overlooking Window Assessment**

Date	1/29/2020	Drawn By	Author	Checked	Checker
Scale				Status	

Project Ref	Drawing No	Revision
15031	SK05	A