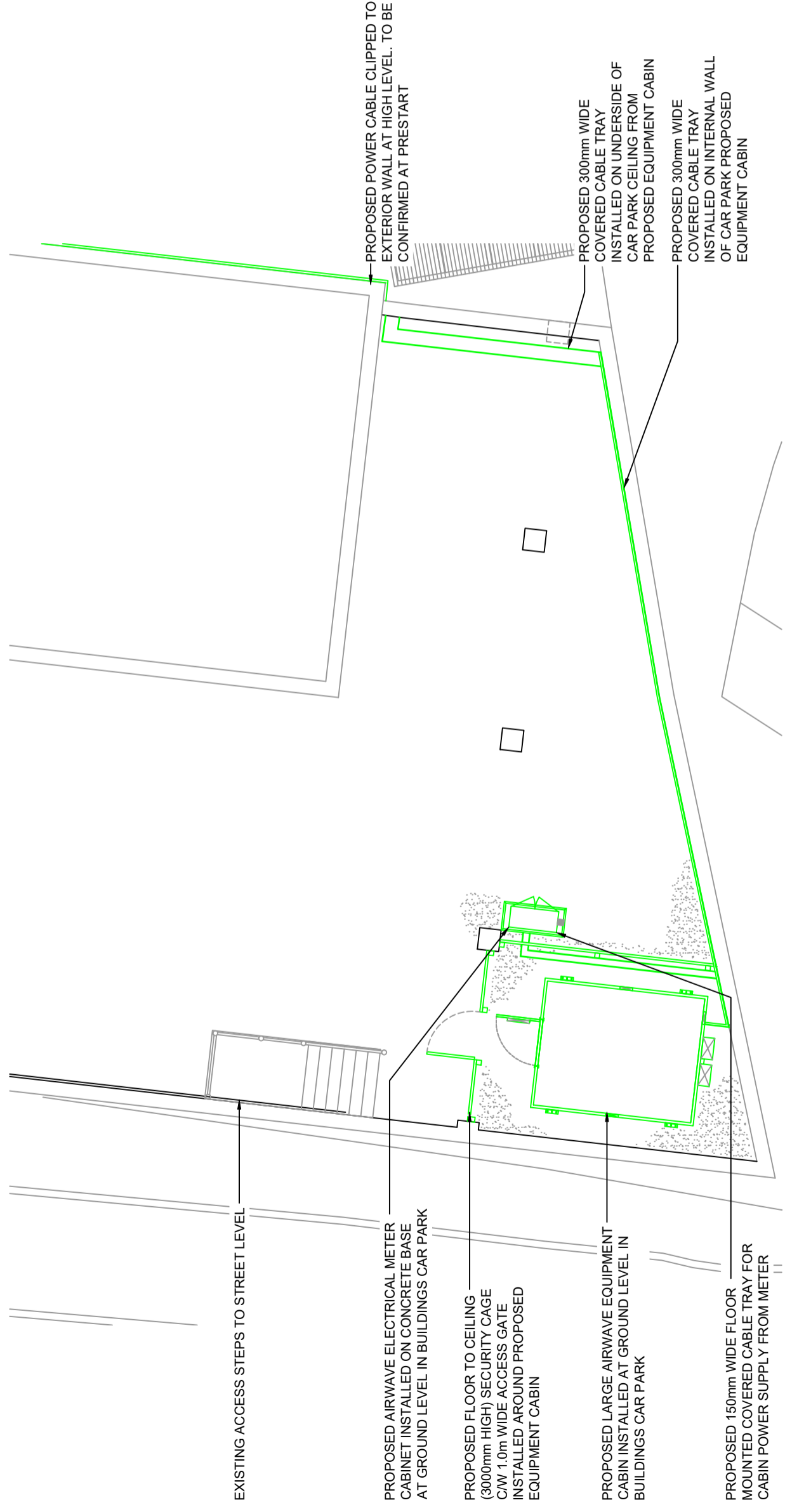


NOTE: ORIGINAL DRAWING SIZE A3

NOTES

1. This drawing to be read in conjunction with MTR058 Series drawings and standard Airwave drawings.
2. All dimensions are in mm unless otherwise stated.



**PROPOSED CAR PARK PLAN**  
(SCALE 1:100)

The design of this site is in accordance with the following design documentation:  
 Radio Base Station Design Guide & Specification - Issue Date 03.02.06  
 Technical Guidance Notes - TGN 0092 to TGN 0124 inclusive.

Rev	Date	Amendments	Drawn By	Approved By
C	26.02.21	HATCHED AREA REMOVED	AM	DB
B	16.11.20	PLAN AMENDED	AM	DB
A	24.01.20	PLANNING ISSUE	AM	DB

**heyrod**  
communicating excellence

Thornley House,  
Overens Street,  
Oldham,  
OL4 1LA  
Tel: 0161 6224160  
Fax: 0161 6224161

**AIRWAVE**  
a Motorola Solutions Company

Job Title  
**MULLEN TOWER - 85 MOUNT PLEASANT**  
 LONDON  
 WC1X 0AG

Drawing Title  
**PLANNING**  
**PROPOSED CAR PARK PLAN**  
**SHEET 05**

Scale	Version	Checked by	Approved by
1:100	V.3	DB	TH
Drawn by	Date Drawn	Date Checked	Date Approved
AM	20.10.20	20.10.20	20.10.20
Drawing No. <b>MTR058-GA-05</b>			