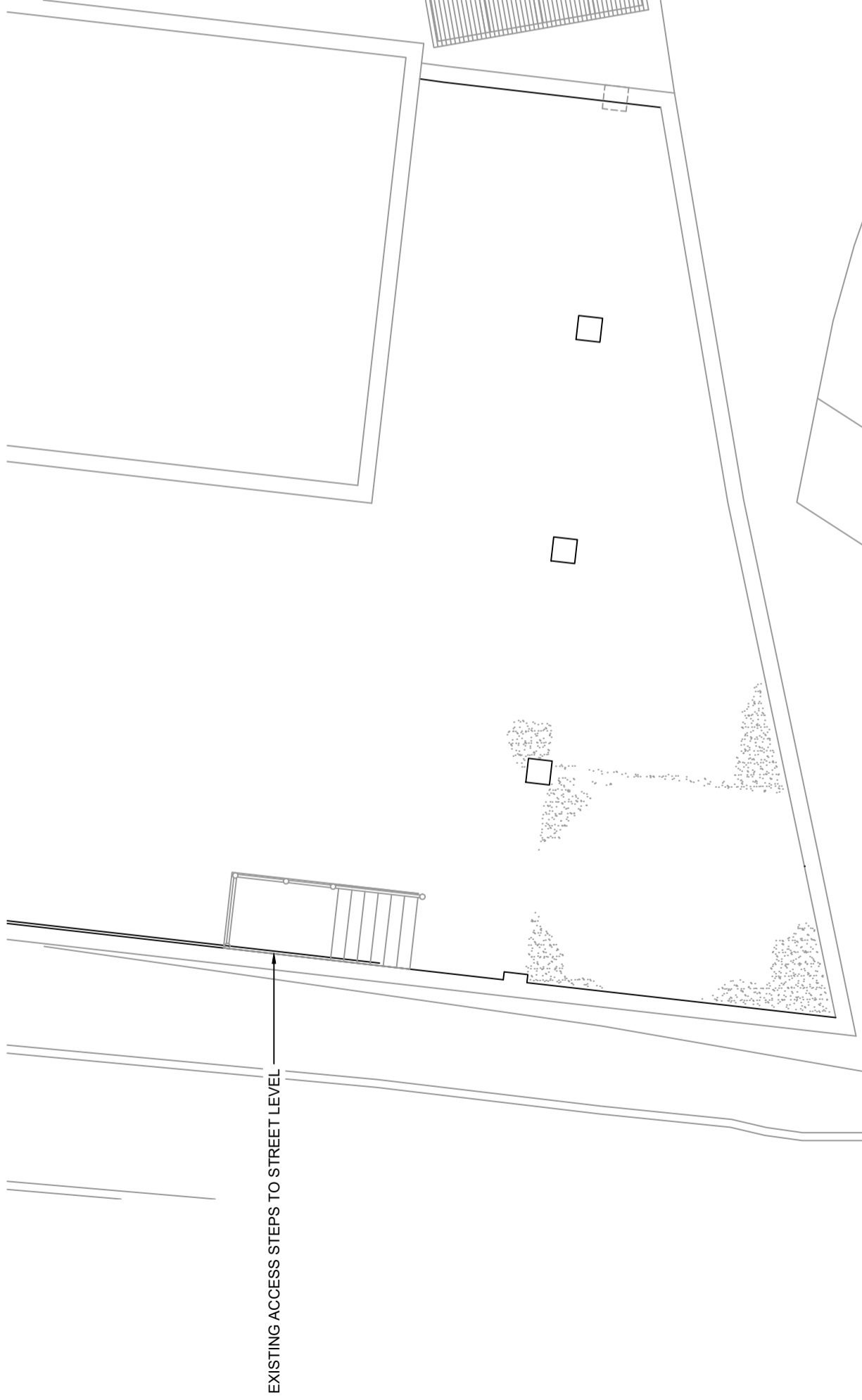


NOTE: ORIGINAL DRAWING SIZE A3

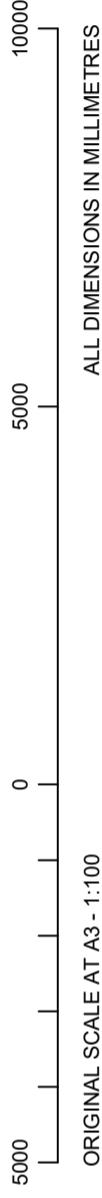
NOTES

- 1. This drawing to be read in conjunction with MTR058 Series drawings and standard Airwave drawings.
- 2. All dimensions are in mm unless otherwise stated.



EXISTING ACCESS STEPS TO STREET LEVEL

EXISTING CAR PARK PLAN
(SCALE 1:100)



ORIGINAL SCALE AT A3 - 1:100

ALL DIMENSIONS IN MILLIMETRES

The design of this site is in accordance with the following design documentation:
 Radio Base Station Design Guide & Specification - Issue Date 03.02.06
 Technical Guidance Notes - TGN 0092 to TGN 0124 inclusive.

Rev	Date	Amendments	Drawn By	Approved By
A	12.01.21	PLANNING ISSUE	AM	DB

heyrod
communicating excellence

Thornley House,
Overens Street,
Oldham,
OL4 1LA
Tel: 0161 6224160
Fax: 0161 6224161

AIRWAVE
a Motorola Solutions Company

Job Title
MULLEN TOWER - 85 MOUNT PLEASANT
LONDON
WC1X 0AG

Drawing Title
PLANNING
EXISTING CAR PARK PLAN
SHEET 04

Scale	Version	Checked by	Approved by
1:100	V.3	DB	TH
Drawn by	Date Drawn	Date Checked	Date Approved
AM	20.10.20	20.10.20	20.10.20

Drawing No. MTR058-GA-04