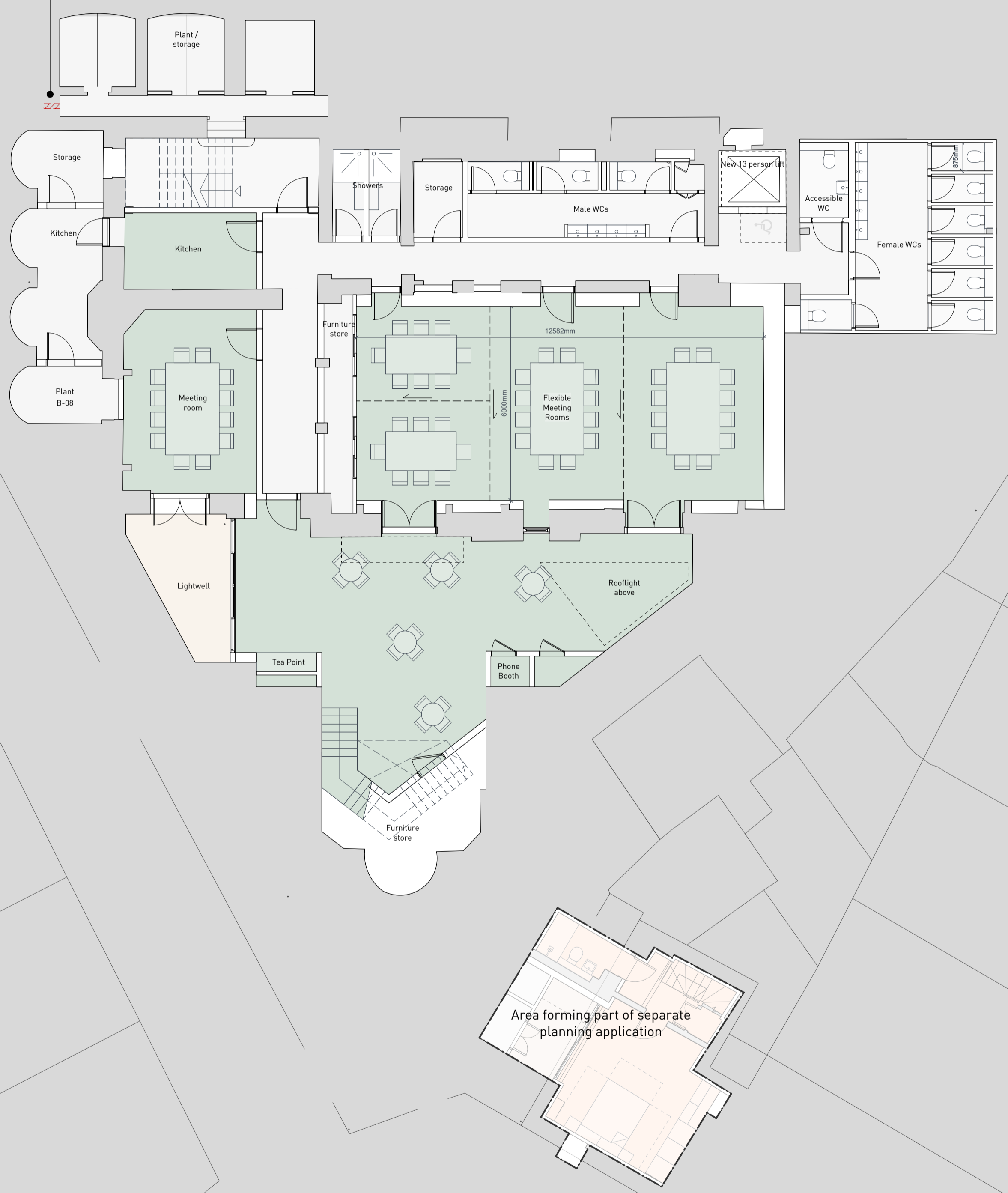


NOTES

- Office
- Commercial
- Plant / Back of house

Penetration to allow new incoming fibre optic cables. 70mm diameter opening.



REV	DATE	COMMENTS
B	17.06.21	Updated further to site investigations and design development
A	01.04.19	Demolition plans overlaid & revised layouts
-	13.12.18	Original issue



CLARIDGEARCHITECTS

Queens Studio, 121 Salisbury Road info@claridgearchitects.com
London, NW9 6RD +44 (0) 20 8969 9223

This drawing is the property of Claridge Architects Ltd. Copyright is reserved & this drawing is issued on the condition that it is not copied, reproduced, retained or disclosed to any unauthorised person, either wholly or in part, without our consent. Do not scale from this drawing. Check all dimensions on site.

22 TOWER STREET
CLIENT - BRITISH RETAIL CONSORTIUM

PROPOSED BASEMENT FLOOR PLAN
STATUS - PLANNING

DRAWN	CHECKED	REVISION
SL	RB	B
SCALE	DRAWING	DATE
1:100 @ A1	18010_GA.01	17.06.21
1:200 @ A3		