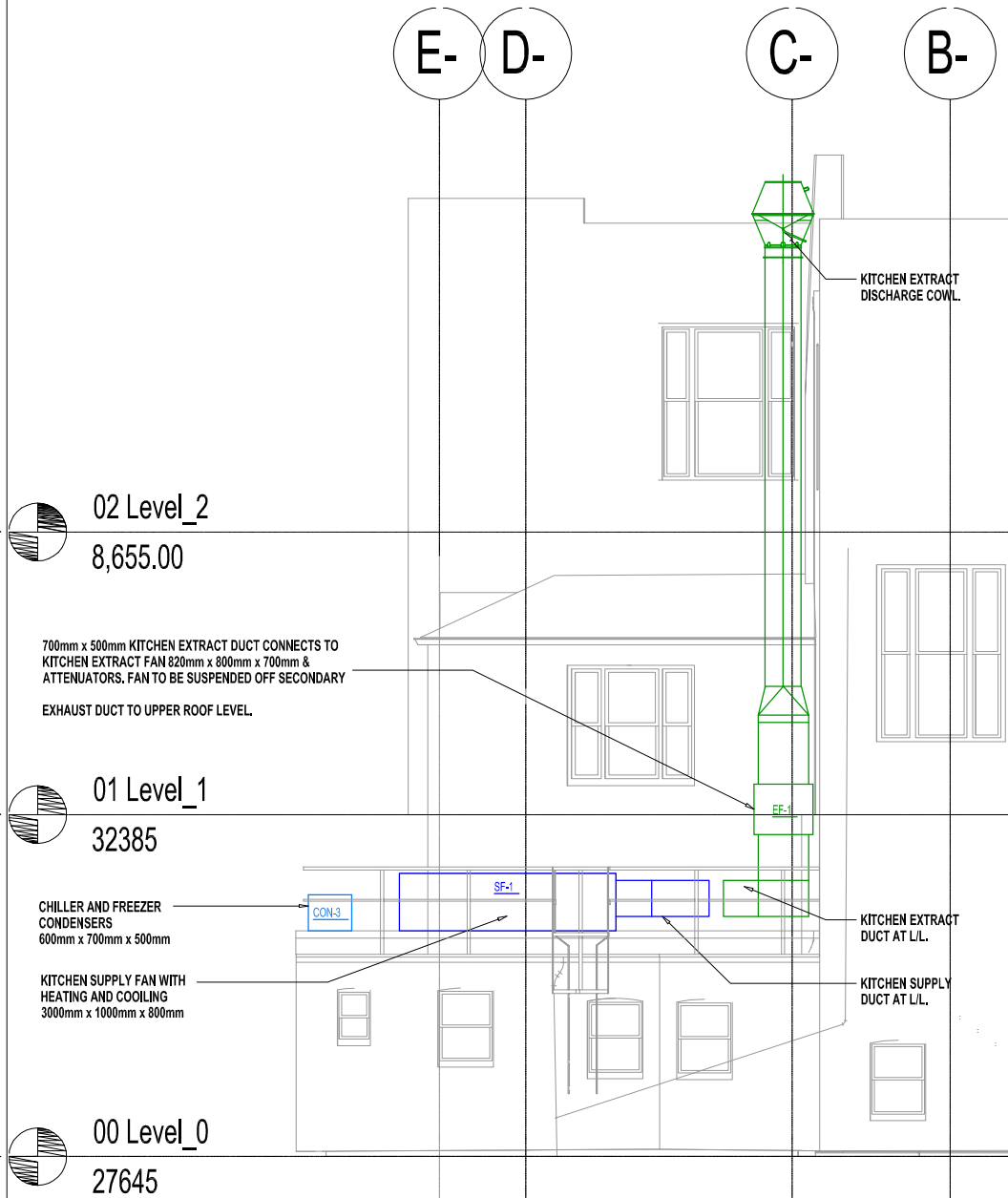
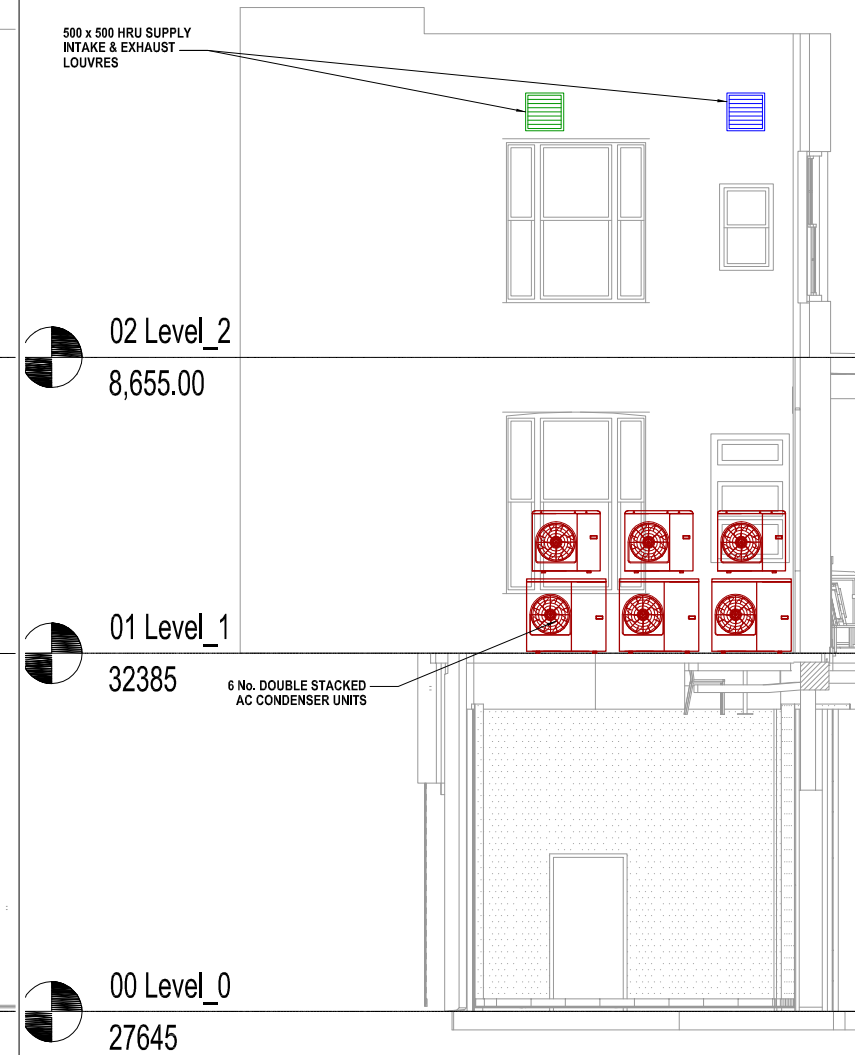


NORTH REAR ELEVATION



WEST ALLEY EXTERIOR ELEVATION



HIGH ST. REAR ELEVATION

- General notes:
- Positions of all equipment, ductwork and fittings are indicative only.
 - Contractors shall confirm the sequence of installation works to ensure safe access is maintained.
 - Attention to drawn to health & Safety issues. Liaise with the main contractor to ensure that installation works are programmed to minimise H&S risks and optimise coordination.
 - All dimensions / duct sizes are to be confirmed unless otherwise stated.
 - This drawing was produced using CAD and should not be amended by hand.
 - All dimensions shown are for reference and should be checked on site prior to commencement of work.
- Specific notes:
- This drawing should be read in conjunction with all architectural, structural and drawings from other services (plumbing, electrical, etc.), along with correct documentation and specifications for the works.
 - Ensure all method statements, sign off and approvals are in place before proceeding with any work.
 - All works to be carried out in accordance with the current British Standards, B.S. codes of practice and building regulations.
 - The HVAC services works shall be carried out in full accordance with the client specification and in line with any relevant technical guide and specification.
 - Ductwork shall be installed in accordance with all current industry standard guidelines / regulations.
 - Collected ductwork to be manufactured to DIN144.
 - Ductwork sized in accordance with all current industry standard guidelines / regulations. Duct dimensions shown on drawing are clear internal dimensions (not including flanges and fittings).
 - Access doors installed on effective exhaust duct every 1000mm for cleaning and before after every change of direction & should be accessible at all locations & making access panels or grilles visible etc. Access panels to be provided by main contractor in any solid ceilings where fire requirements indicated by HVAC installation contractor.
 - Duct connections with fans and other equipment to be a manufacturer canvas connection to prevent duct leakage and transmission of vibration.
 - Volume control dampers shall be installed on all branch lines and diffuser / grille terminals to facilitate commissioning.
 - Supply and secondary fan coil unit ductwork to be fully insulated.
 - Final air intakes and exhausts locations are shown indicatively on these drawings. The exact positions shall be agreed with the client, architect and the main contractor and shall be shown accurately on the working / co-ordinated drawings.
 - Position of all grilles, air valves shown are to optimum positions for air flow. The grille to be positioned as close as practicable to location shown and coordinated with other services and trade constraints.
 - Fire dampers are to be shown on ductwork (excluding kitchen extract ducts), penetrating fire compartment divisions and shall incorporate certified fire dampers to match the barrier rating, together with access panels. Reference to be made to architect / fire engineer drawings to establish locations. Fire dampers are shown indicatively on these drawings.
 - All service cables and ductwork where fire rated, shall match the fire rating of the wall in which it is installed.
 - Attenuation and vibration measures shall be incorporated on all plant and ductwork supports in full accordance with acoustic consultant's specification.
 - Access provided to all plant equipment for maintenance and servicing.
 - Refer to catering specialist layout to determine confirmed canopy areas and locations.
 - Condensate drain from AC condensers to be to the nearest waste connection or to rooftop drain. Condensate drains from the FCUs to be run to the nearest drain (25mm) subject to manufacturer and trade requirements. Both shall be the equivalent plastic or copper alloy.
 - Install all mechanical equipment in accordance with manufacturer guidelines.
 - Catering condensers are not CUL equipment. However, they are indicatively shown on CUL drawings to allow for provisional space and access within the HVAC plant area.
 - Locations of all required floor, wall and roof openings shall be co-ordinated with all other trades involved.
 - No other loads (other services or man loads) shall be hung from ductwork supports.

Project:

Wendy's

189-191 CAMDEN HIGH STREET LONDON

Drawing Title:

External Elevations

Drawing No.: 001-861-04

Rev: -

Scale: 1:50 @ A1 1:100 @ A3

Drawn By: PR Checked By: Date: 26/08/21

chapman ventilation

15-20 Woodfield Road, Welwyn Garden City Hertfordshire AL7 1JQ
Tel: 01707 372658 Fax: 01707 325001
E-mail: info@chapmanventilation.co.uk
Web: www.chapmanventilation.co.uk

Copyright of this drawing resides with Chapman Ventilation Limited

