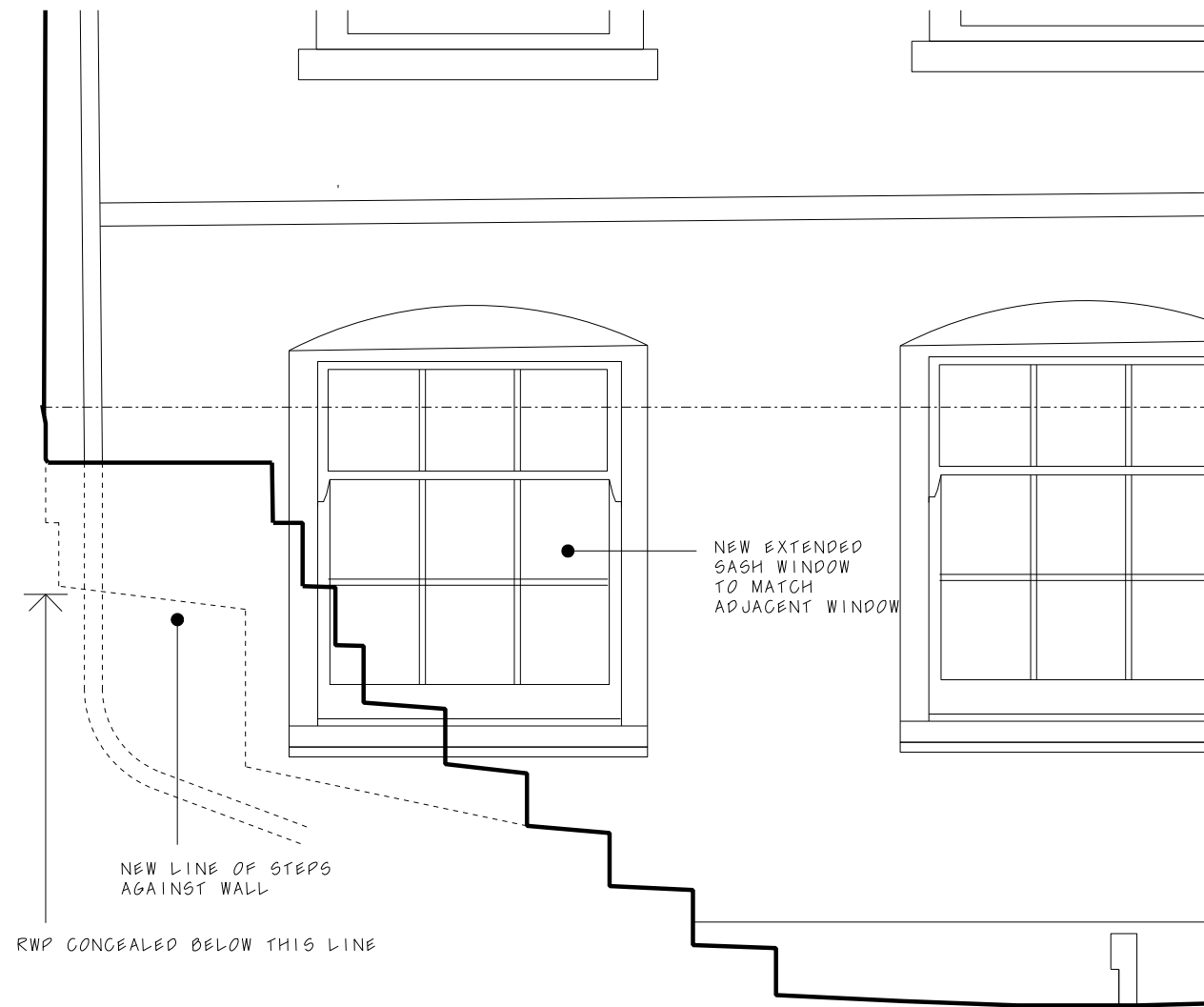


Proposed plan

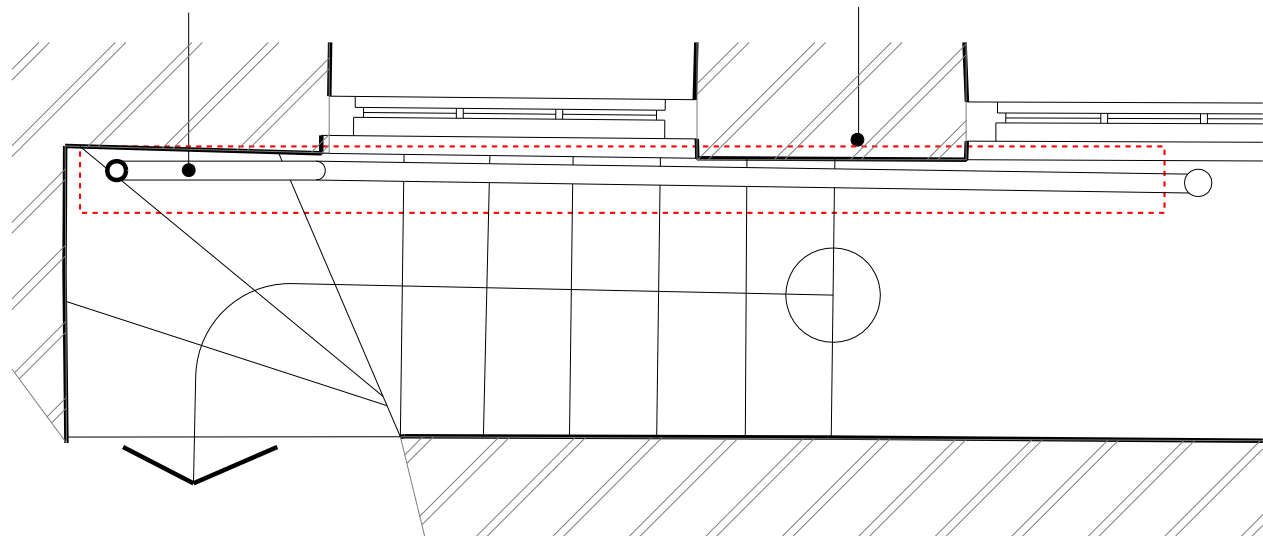
UPVC RAINWATER PIPE SITS OVER STEPS

BREAK OUT CONCRETE STEPS AS REQUIRED TO CONCEAL DRAINAGE

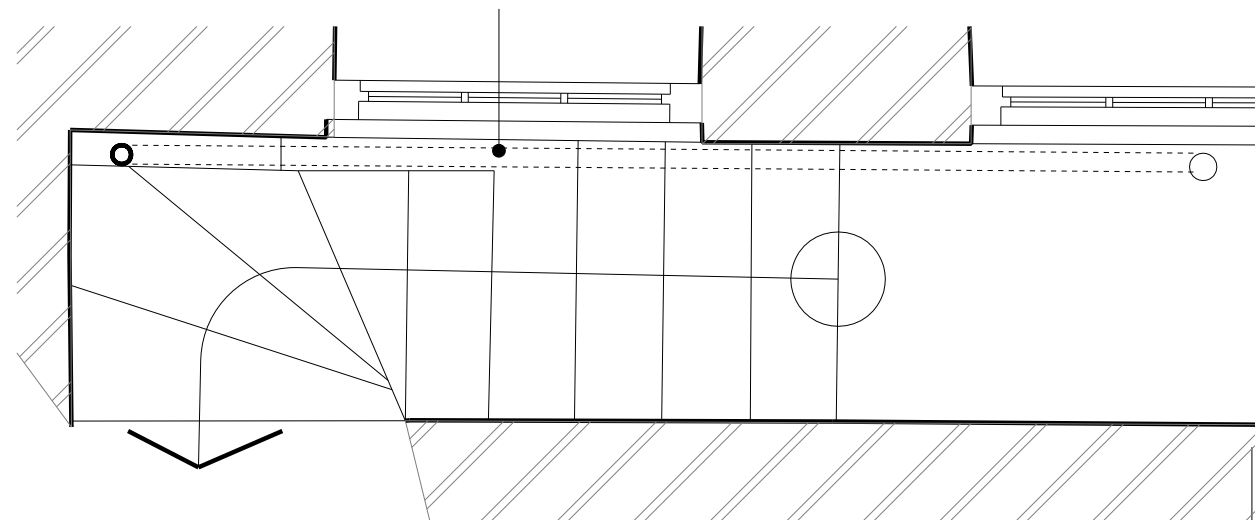


Proposed elevation

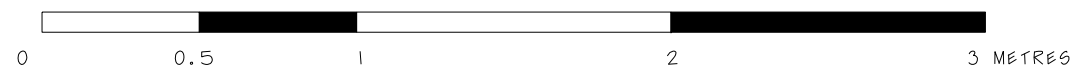
RAINWATER PIPE CONCEALED UNDER STEPS - TO CONNECT WITH EXISTING WASTE CONNECTION BELOW GROUND. STEPS MADE GOOD



Existing plan



Proposed plan



Duncan Woodburn RIBA Architect
 Second floor studio, 28 Poland Street, London W1F 8QP
 Tel. 0207 637 3819
 Mob. 07956 661 426

**5 Elm row
 103 Works to lower ground kitchen window**

September 2021
 1:12.5 @A1 1:25 @A3