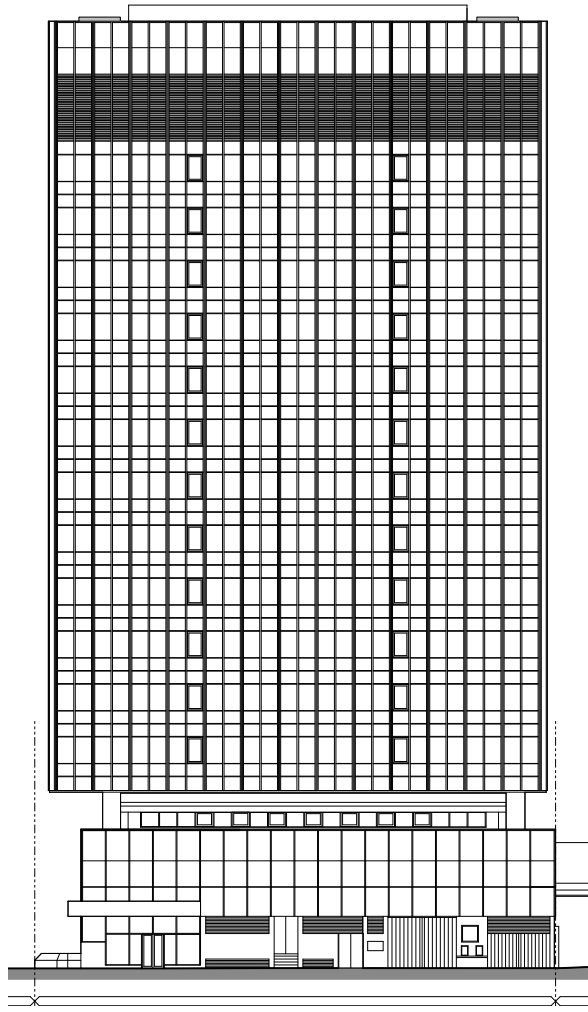


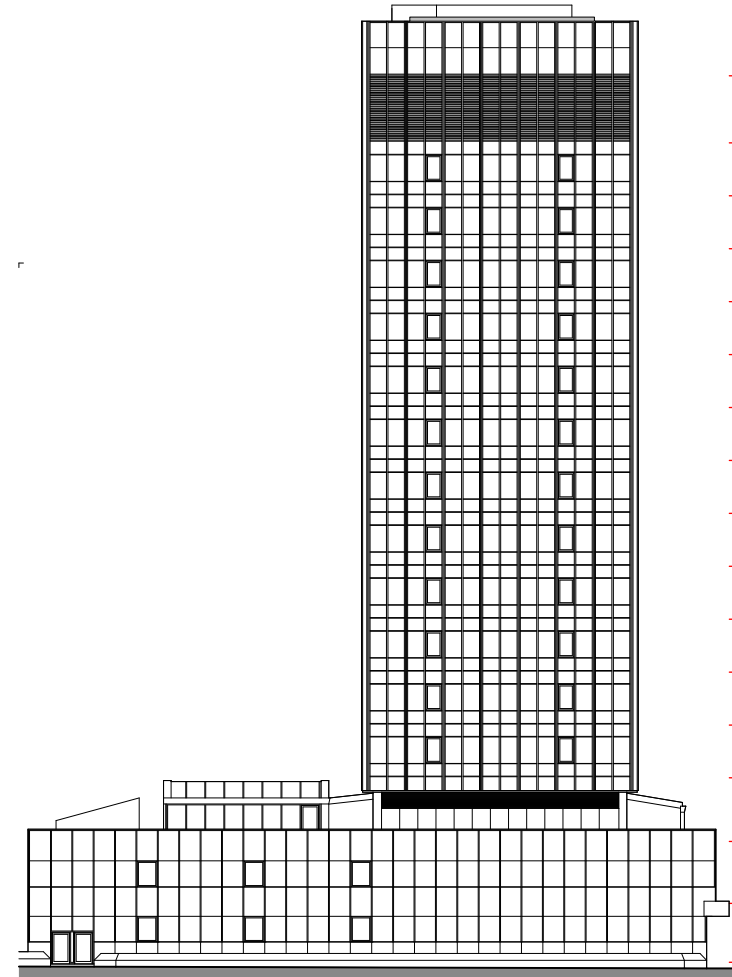
General Notes:

- No dimension is to be scaled from this drawing. All Contractors must familiarise themselves with site conditions, including checking site dimensions, and must report in writing of any discrepancies with the information depicted in this drawing or the specifications. The Contractor shall obtain further instructions from CBRE prior to proceeding with the affected elements.
- This drawing is to be read in conjunction with other related drawings, Specifications, Schedules and Bill of Materials (the Contract Information) produced and issued by CBRE and other involved parties for this project. The Contractor shall advise in writing of any inconsistencies or contradictions of any of the information contained therein and shall obtain further instructions from CBRE prior to proceeding.
- Contractors to advise on suitability of all details and to ensure structural integrity, stability and strength of all construction for the intended performance.
- Contractors to ensure that all specified and implied materials, fixtures and fittings are fabricated and installed in accordance with their manufacturers' recommendations. Contractor is responsible for obtaining all relevant manufacturers' data and related information. Where manufacturers' recommendations conflict or are inconsistent with any of the information contained within the Contract Information, the Contractor shall obtain further instructions from CBRE prior to proceeding.
- Contractors to ensure that all materials and construction complies with Building Regulations, DDA and CDM Regulations, Environmental Health, Planning and any other relevant statutory requirements.
- Contractors to ensure all specified materials, fixtures and fittings are procured to meet all aspects of the project programme and must advise CBRE if any items will not be available in sufficient time and to request further instructions.

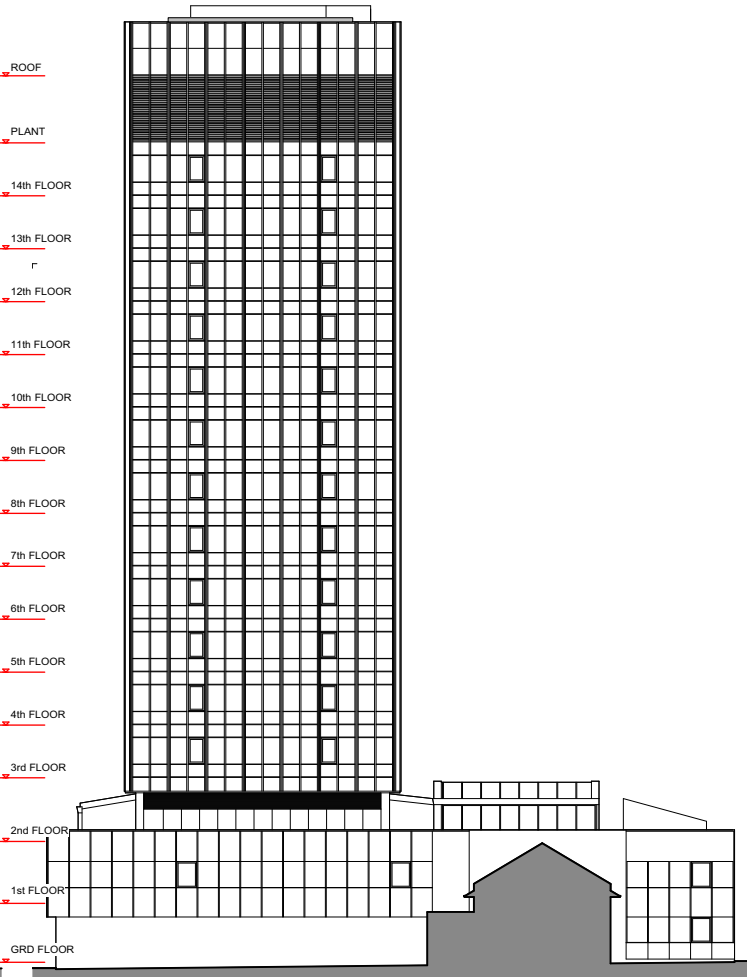
Copyright notice:
This and all other documents authored by CBRE and all information and concepts both depicted and implied therein are the sole property of CBRE. Reproduction or transmission in any form is strictly forbidden unless prior permission is obtained in writing from CBRE. Construction based on the depicted information at any time or location not related to this project is strictly forbidden unless prior permission is obtained in writing from CBRE.



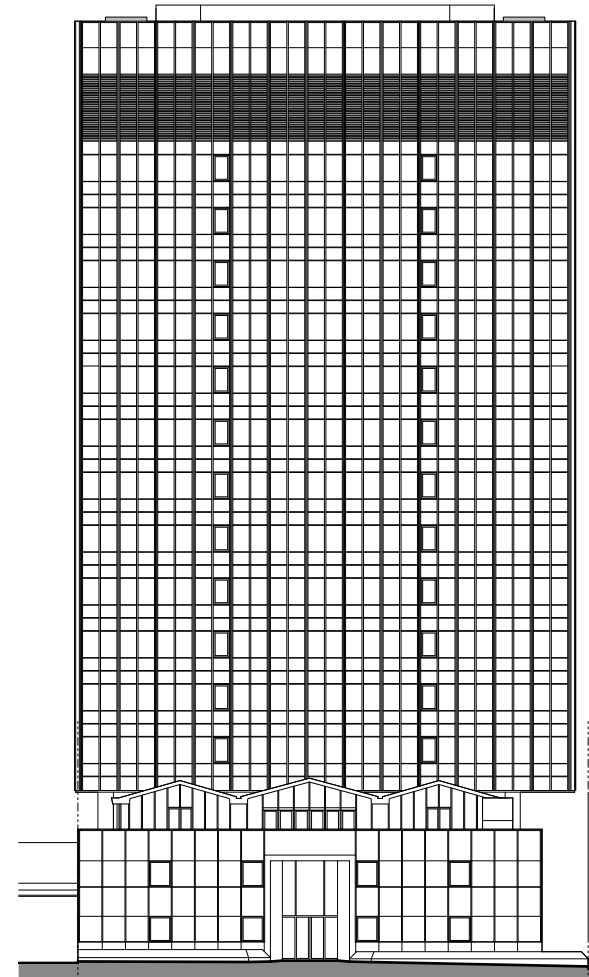
NORTH ELEVATION



EAST ELEVATION



WEST ELEVATION

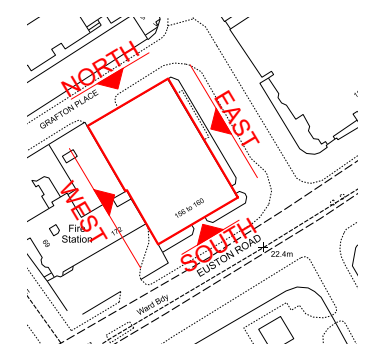
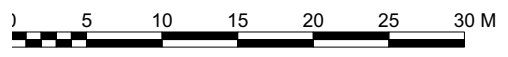


SOUTH ELEVATION

ROOF
PLANT
14th FLOOR
13th FLOOR
12th FLOOR
11th FLOOR
10th FLOOR
9th FLOOR
8th FLOOR
7th FLOOR
6th FLOOR
5th FLOOR
4th FLOOR
3rd FLOOR
2nd FLOOR
1st FLOOR
GRD FLOOR

ROOF
PLANT
14th FLOOR
13th FLOOR
12th FLOOR
11th FLOOR
10th FLOOR
9th FLOOR
8th FLOOR
7th FLOOR
6th FLOOR
5th FLOOR
4th FLOOR
3rd FLOOR
2nd FLOOR
1st FLOOR
GRD FLOOR

EXISTING ELEVATIONS
Scale 1:100 @ A3



Rev	Date	Revision description	Int.
XX	XX.XX.XX	XXXXXXXXXXXXXXXXXXXXXXXX	XX



CBRE Limited
St Martins Court | 10 Paternoster Row | London | EC4M 3TP
T: 0207 182 2000 | F: 0207 182 3007 | W: www.cbre.com

Project:		
EVERGREEN HOUSE 160 EUSTON ROAD London NW1 2DT		
Drawing:		
EXISTING ELEVATIONS		
Scale:	Drawn:	Date:
1:500 @ A3	AP	23.08.2021.
Alternate Scale:	Chkd:	Approved:
-	SM	SM
Status:		
Info		
Project No:	Drawing No:	Rev No:
-	APL.05	--