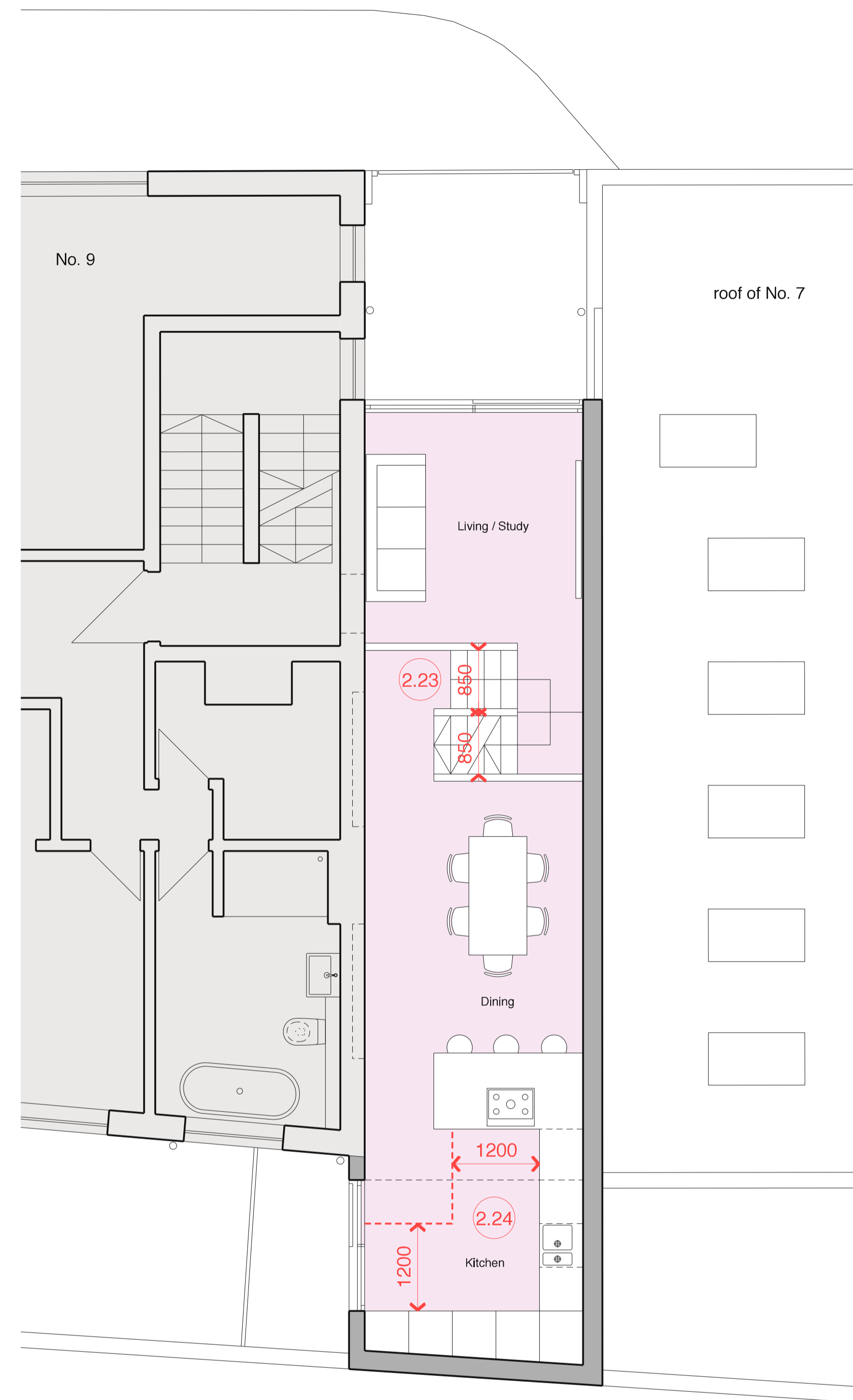


Ground Floor

Part M4(2) Criteria Compliance:

- 2.9. Approach to Dwelling
Gently sloping approach route through courtyard (fall 1:28).
- 2.10/11. External Ramps & Steps
None
- 2.12. Parking Space
None
- 2.14. Communal Entrance
Not Applicable
- 2.20. Entrance
External 1200 depth level landing. Entrance is illuminated and covered. Accessible type threshold. Door has minimum 850mm clear width.

- 2.22. Internal Door and Hall Widths
All dimensions for hallway widths are compliant as indicated on the plans. Internal door widths satisfy minimum clear opening requirements and have 300mm minimum clear nibs to leading edge of doors on the pull side.
- 2.23. Private Stairs
Stair meets provisions of Part K and has a minimum width of 850mm. Access to all rooms in entrance storey is step free.
- 2.24. Living Area and Kitchen
The current layout has a bedroom on the entrance storey, though this could be adapted to a living space if required. Kitchen has minimum 1200mm clear space in front and between all kitchen units.
- 2.25. Bedrooms
Bedroom has 750mm clear access zone around double bed and from the doorway to the window.



First Floor

- 2.26. Sanitary Facilities
Bathroom walls, ducts and boxings will be constructed to adequately support grab rails, seats etc as required.
- 2.27. Entrance storey WC
A fully accessible entrance level bathroom containing a WC is provided that complies with the required access zones.
- 2.29. Bathrooms
An accessible bathroom is provided on the same level as the principal bedroom which includes WC, basin and bath. Access zones comply with the provisions of M4(2) Diagram 2.5. Provision will be made for a potential level access shower within the bathroom.
- 2.30. Services and Controls
All services and controls to be installed in line with recommended setting out.

Revision	Date	By	Checked

For
Planning

Part M(2) Compliance Diagram

9 Leighton Place, NW5

2110_P06

Scale: 1:50 at A1
 1:100 at A3
 Date: 21.4.21
 Drawn: BH

BHA

BURD HAWARD ARCHITECTS LTD
 24 Wolsey Mews
 London NW5 2DX
 T +44 20 7267 9815
 E studio@burdward.com