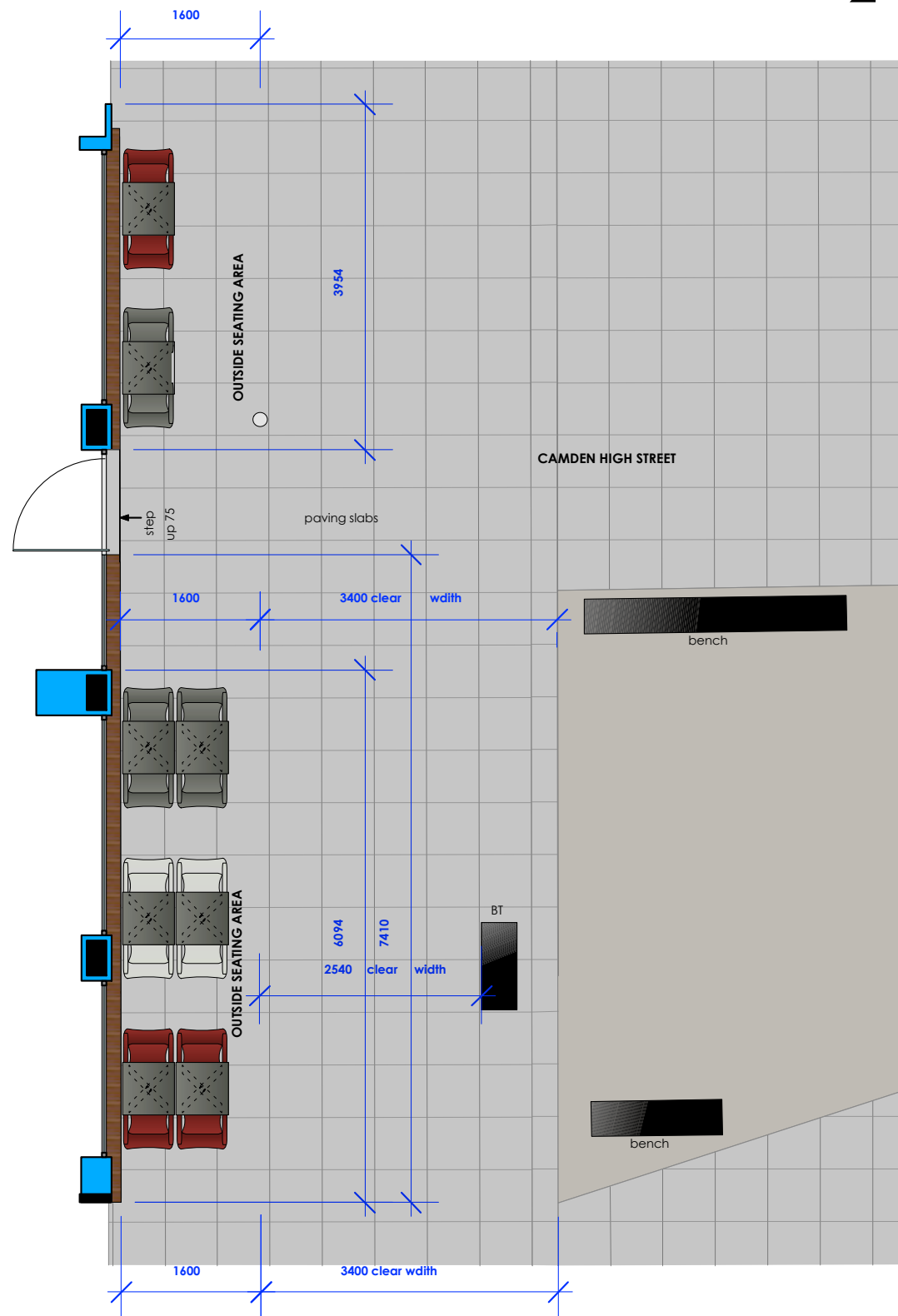






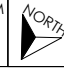


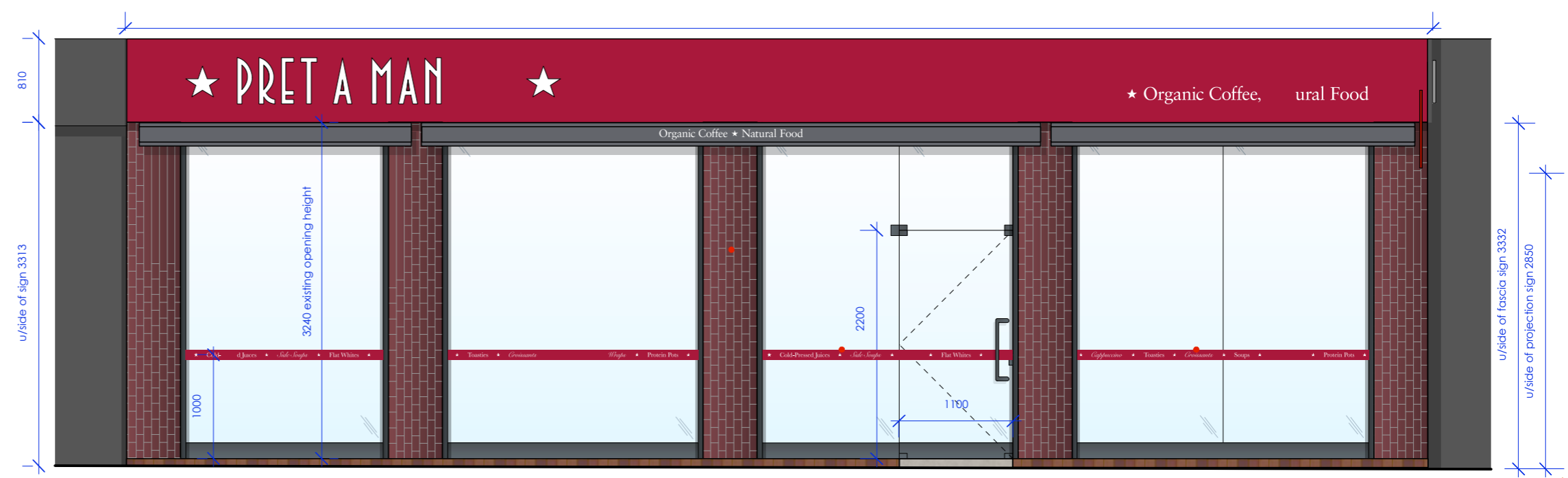
Top down view of Revised Tables and Chairs at 2 - 4 Camden High Street



TOTAL COVERS : 20no.	 TILTING HPL TABLES - 8no. 600sq. 736h pret MHPL6SGY laminated table top alu tilting base RAL 7016 slate grey - AEL solutions
EXTERNAL FURNITURE:	all external tables & chairs to be moved inside the shop when the shop is closed.
 EXTERIOR CHAIRS - 16no. total Pret Polypropylene Chairs 530d 570w 840h from AEL solutions  08no. CC4226 Purple Red  08no. CC4228 Black Grey  04no. CC4227 Stone Grey 	

<p>CLIENT ★ PRET A MANGER ★</p> <p>PROJECT Mornington Crescent 2-4 CAMDEN HIGH STREET LONDON NW1 0JH</p> <p>DRAWING No. TD16-PM70-01.2</p>	<p>0 1M 2M 3M 4M 5M 10M SCALE 1:100 METRES</p> <p>TITLE external seating plan</p> <p></p>
-------------------------------------------------------------------------------------------------------------------------------------------------------------------	----------------------------------------------------------------------------------------------------------------------------------------------------------------------------------------

Shop front Tables and Chairs to be placed against 2 - 4 Camden High Street



proposed shop front elevation s scale 1:50

	<small>CLIENT</small> ★ PRET A MANGER ★	 <small>SCALE 1:50</small>	
	<small>PROJECT</small> Mornington Crescent 2-4 Camden High Street London NW1 0JH	<small>TITLE</small> shopfront	
	<small>DRAWING No.</small> TD16/PM70/02.2		