

General notes:

This drawing is copyright of KSR architects. This drawing must be read in conjunction with the Designer's Risk Assessment, specification and all other relevant documentation and drawings. KSR architects accept no liability for any expense, loss or damage of whatsoever nature and however arising from any variation made to this drawing or in the execution of the work to which it relates which has not been referred to them and their approval obtained.

Do not scale from this drawing or the digital data, only figured dimensions are to be used. For Planning refer to linear scale.

Check all dimensions on site prior to carrying out any works - advise any discrepancy

Notes/Legends

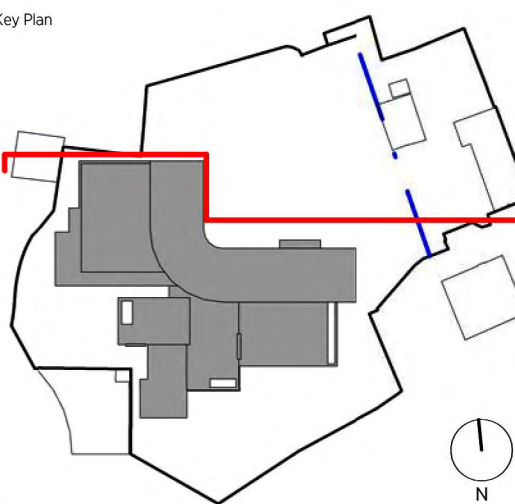
- A. INSULATED EXTERNAL RENDER
- B. BRICK CLADDING
- C. TIMBER CLADDING
- D. TIMBER SCREENING
- E. GLAZING
- F. INTENSIVE GREEN ROOF
- G. STANDING SEAM COPPER ROOF
- H. GREEN WALL

C	PVs relocated.	14.09.21	LV
B	Full height glazing	28.05.19	LV
A	Additional PVs and roof vents	08.03.19	LV

Rev	Description	Date	Chkd
-----	-------------	------	------

© KSR Architects
Stamp

PLANNING



KSRARCHITECTS
KSR Architects LLP mail@ksrarchitects.com
14 Greenland Street t: +44 (0)20 7692 5000
London NW1 0ND www.ksrarchitects.com

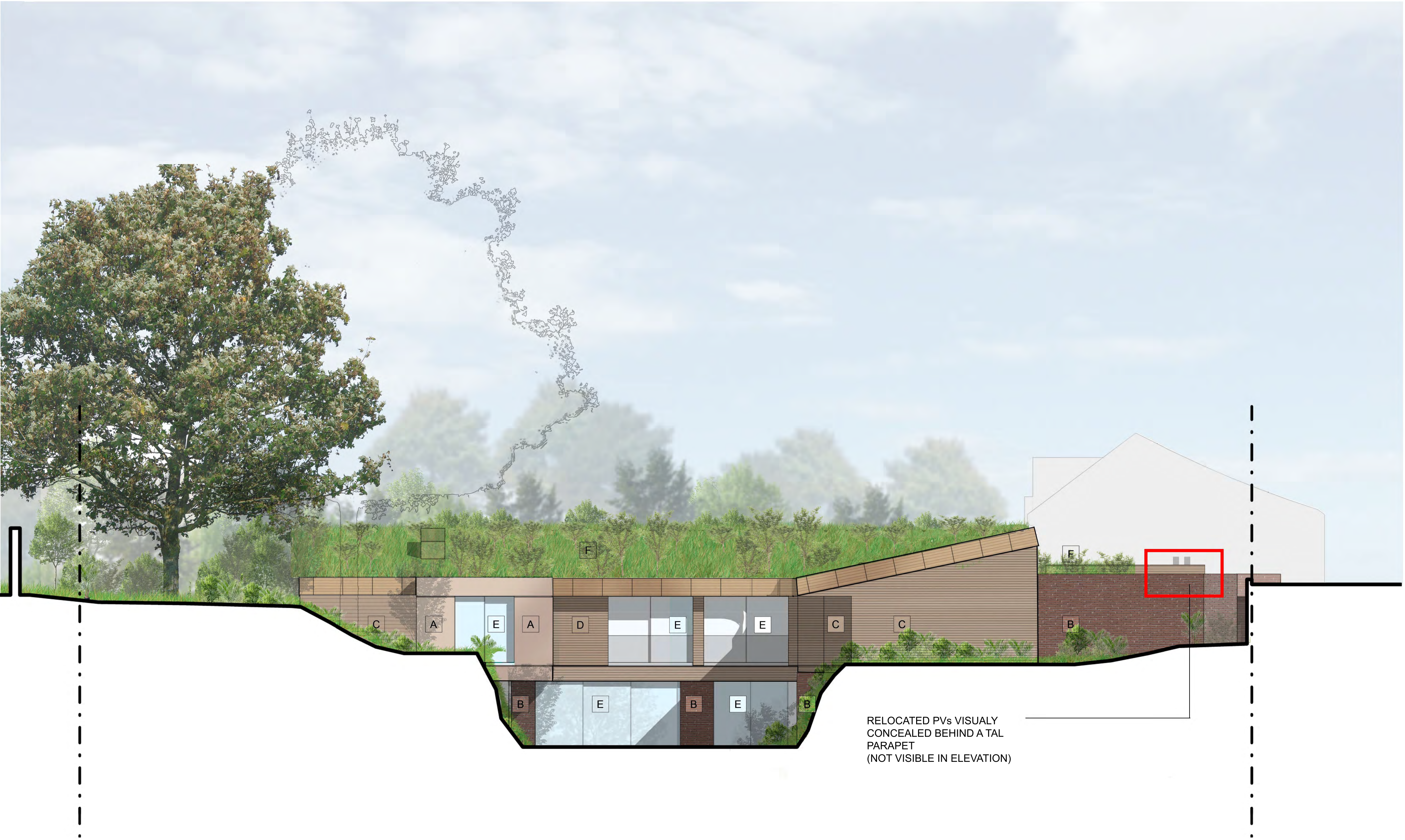
Project:
22 FROGNAL WAY

Title:
NORTH ELEVATION

Date:	02/20/19	Drawn By:	Author	Checked:	Checker
-------	----------	-----------	--------	----------	---------

Scale:		Status:	
--------	--	---------	--

Project Ref:	Drawing No:	Revision:
FGW	FGW-P-301	C



1 PA 301 NORTH ELEVATION

1:100