



**1 PA 302 SOUTH ELEVATION**  
1:100

- NOTE 1:  
PROPOSED ADDITIONAL PVS BEHIND THE PARAPET.
- NOTE 2:  
PVS AS PER APPROVED PLANNING DOCUMENTATION  
(REF: 2015/3530/P)
- NOTE 3:  
TIMBER CLAD VENT ENCLOSURE,VISUALLY CONCEALED  
BY THE PARAPET AND ADJACENT GREEN ROOF  
PLANTING.
- NOTE 4:  
VENT WITH GREEN ROOF TO VISUALLY BLEND IN WITH  
THE PLANTING.  
INTENSIVE ROOF PLANTING, VISUALLY CONCEALED BEHIND  
ADJACENT SHRUB PLANTS.
- NOTE 5:  
PROPOSED CHIMNEY

General notes:  
This drawing is copyright of KSR architects. This drawing must be read in conjunction with the Designer's Risk Assessment, specification and all other relevant documentation and drawings. KSR architects accept no liability for any expense, loss or damage of whatsoever nature and however arising from any variation made to this drawing or in the execution of the work to which it relates which has not been referred to them and their approval obtained.  
Do not scale from this drawing or the digital data, only figured dimensions are to be used. For Planning refer to linear scale.  
Check all dimensions on site prior to carrying out any works - advise any discrepancy

Notes/Legends

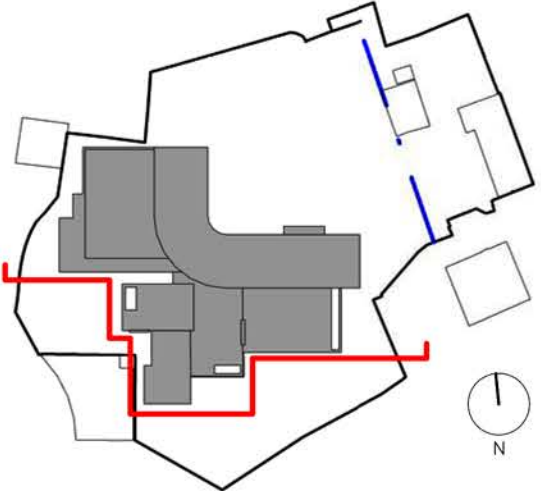
- A. INSULATED EXTERNAL RENDER  
B. BRICK CLADDING  
C. TIMBER CLADDING  
D. TIMBER SCREENING  
E. GLAZING  
F. INTENSIVE GREEN ROOF  
G. STANDING SEAM COPPER ROOF  
H. GREEN WALL

A Additional PVs and roof vents 08.03.19 LV

Rev	Description	Date	Chkd
© KSR Architects			
Stamp			

#### PLANNING

Key Plan



**KSRARCHITECTS**  
KSR Architects LLP  
14 Greenland Street  
London NW1 0ND  
t: +44 (0)20 7652 5000  
m: +44 (0)20 7652 5000  
www.ksararchitects.com

Project:  
**22 FROGNAL WAY**

Title:  
**SOUTH ELEVATION**

Date: 02/27/19	Drawn By: Author	Checked: Checker
Scale:	Status:	

Project Ref:	Drawing No:	Revision:
FGW	FGW-P-302	A