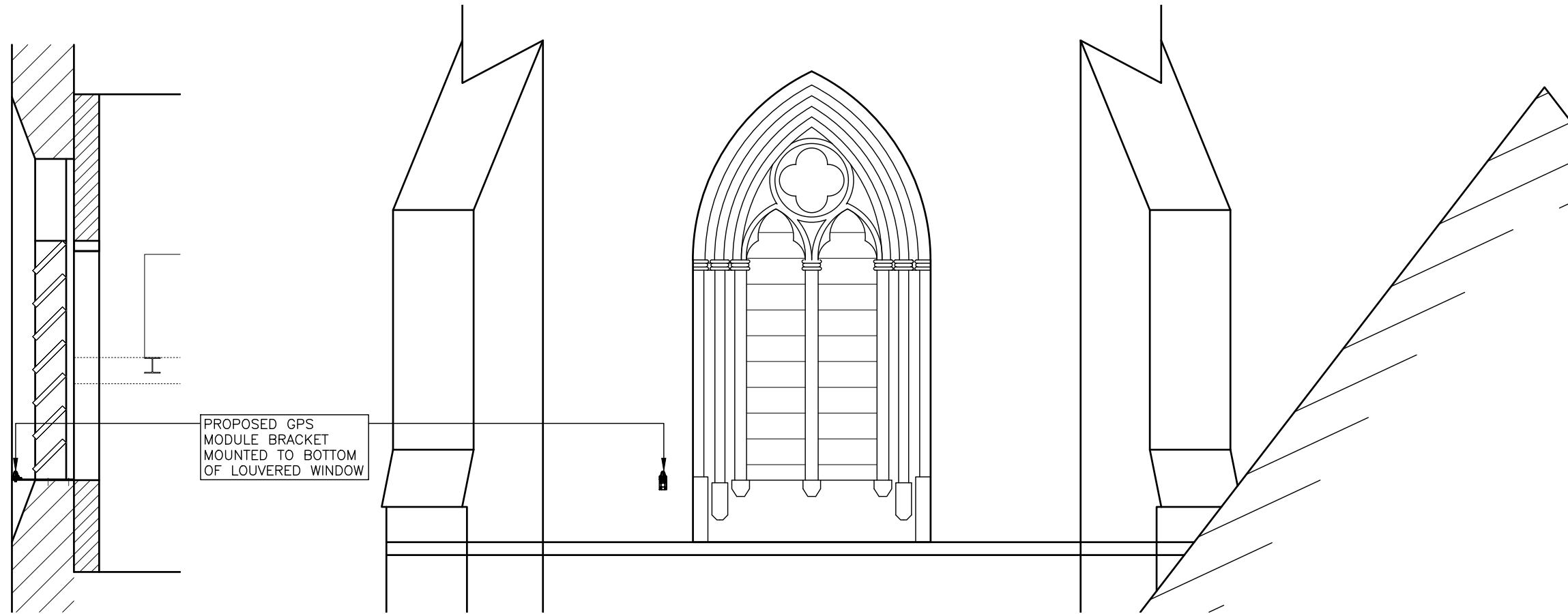


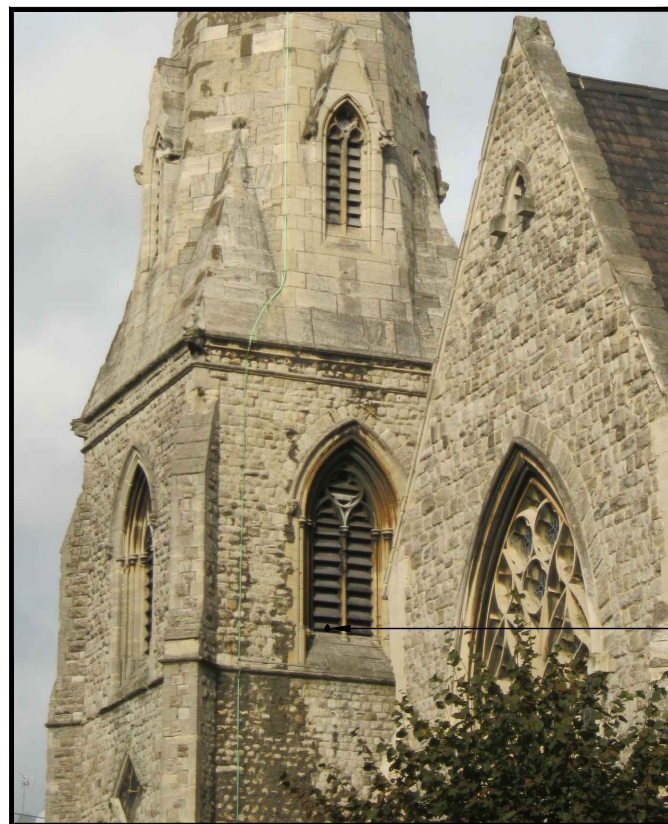
ALL DIMENSIONS ARE IN mm UNLESS NOTED OTHERWISE

N.G.R | E: 525656 N: 184022

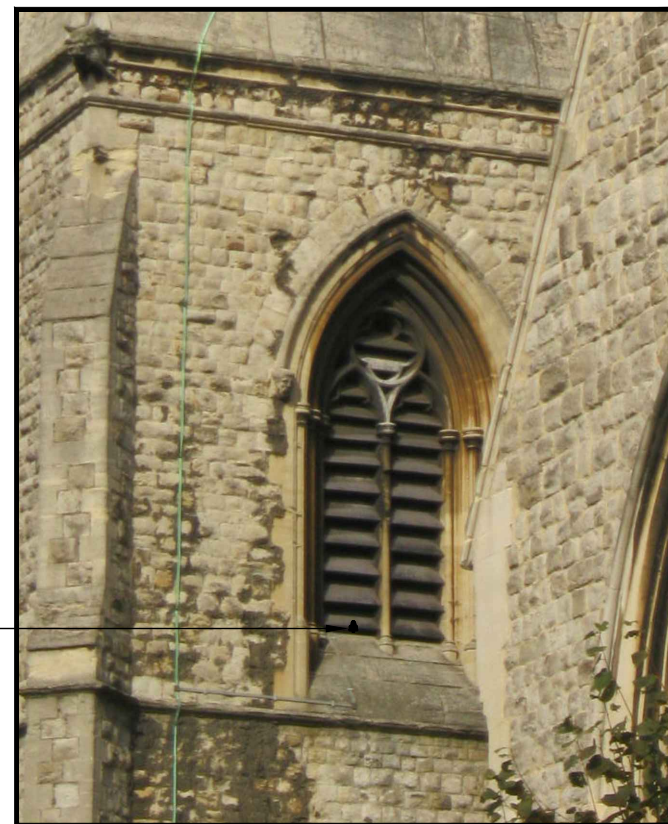
NOTES:



PROPOSED SOUTH-EAST PART TOWER ELEVATION  
(1:50)



PROPOSED GPS MODULE BRACKET MOUNTED TO BOTTOM OF LOUVERED WINDOW



PROPOSED SOUTH-EAST PART TOWER PHOTOS  
(NTS)

A	Issued for Construction	DR	GD	19.06.20
REV	MODIFICATION	BY	CH	DATE

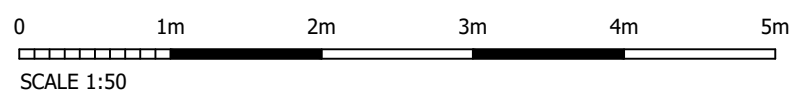


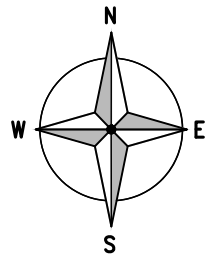
Cell Name		Opt.
ST MARY WITH ALL SOULS		-
Cell ID No		
CORNERSTONE	TEF	VF
E314507	-	77175_10
14839224	-	77175_10

Site Address / Contact Details  
ST MARY WITH ALL SOULS CHURCH  
PRIORY ROAD  
SOUTH HAMPSTEAD  
LONDON  
NW6 4SN

Drawing Title: PROPOSED GPS MODULE ELEVATIONS			
Purpose of issue: CONSTRUCTION			Dwg Rev:
Drawing Number: 308			A
Surveyed By: DR	Original Sheet Size: A3		Pack Issue:
Drawn: GD	Date: 19.06.20	Checked: GD	Date: 19.06.20
			A

The drawings comply with Vodafone Standard ICNIRP guidelines.  
Designed in accordance with CORNERSTONE document: SDN0009





W E

EXISTING MBNL ANTENNA

EA2  
310°

EXISTING 1No. VF ANTENNA ON STEELWORK BEHIND GRP LOUVERS

EXISTING OPEN GRID MESH ACCESS FLOOR

EXISTING HOOPED ACCESS LADDER

EA3  
40°

EXISTING 1No. VF ANTENNA ON STEELWORK BEHIND GRP LOUVERS

EXISTING MBNL ANTENNA

EXISTING 300mm WIDE CABLE TRAY RUN AT LOW LEVEL TO EACH ANTENNA

EXISTING MBNL ANTENNA

EXISTING 1No. VF ANTENNA ON STEELWORK BEHIND GRP LOUVERS

EA1  
130°

**EXISTING ANTENNA PLAN**  
(1:25)



ALL DIMENSIONS ARE IN mm UNLESS NOTED OTHERWISE

N.G.R E: 525656 N: 184022

NOTES:

COLOUR KEY	
SHARED EQUIPMENT	
VF ALLOCATED EQUIPMENT	
TEF ALLOCATED EQUIPMENT	

REV	MODIFICATION	BY	CH	DATE
A	Issued for Construction	GB	DR	08.07.21



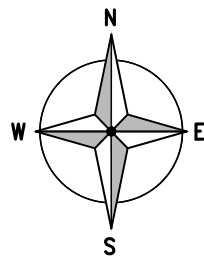
Cell Name	Opt.
ST MARY WITH ALL SOULS	-

Cell ID No		
CORNERSTONE	TEF	VF
E314507		
14839224	-	77175_10

Site Address / Contact Details  
ST MARY WITH ALL SOULS CHURCH  
PRIORY ROAD  
SOUTH HAMPSTEAD  
LONDON  
NW6 4SN

Drawing Title: EXISTING ANTENNA PLAN				
Purpose of issue: CONSTRUCTION				Dwg Rev:
Drawing Number: 400				A
Surveyed By: DR		Original Sheet Size: A3		Pack Issue:
Drawn: GB	Date: 08.07.21	Checked: GD	Date: 08.07.21	A

The drawings comply with Vodafone Standard ICNIRP guidelines.  
Designed in accordance with CORNERSTONE document: SDN0009



PROPOSED 300mm WIDE CABLE TRAY LAID HORIZONTAL ACROSS FLOORING TO EXTEND FROM EXISTING CABLE TRAY TO NEW ERS POSITIONS

PROPOSED 5No. ERS'S MOUNTED ON NEW 1100mm LONG ERS RAIL MOUNTED TO 2No SUPPORT POLES BOLTED TO EXISTING STEELWORK

PROPOSED 2No. BOB BOX MOUNTED TO RAIL NEXT TO ERS

COLOUR KEY

SHARED EQUIPMENT	
VF ALLOCATED EQUIPMENT	
TEF ALLOCATED EQUIPMENT	

ALL DIMENSIONS ARE IN mm UNLESS NOTED OTHERWISE

N.G.R | E: 525656 N: 184022

NOTES:

AT REQUIRED LOCATIONS TO THE FRONT OF PROPOSED ANTENNA THE EXISTING SLATE LOUVERS ARE TO BE REMOVED (BY SPECIALIST STONE MASON APPROVED BY CHURCH ARCHITECT) LOGGED, LABELED AND STORED. REMOVED SLATE LOUVERS ARE TO BE STORED ON THE STEELWORK PLATFORM AT 21.3m AGL. (SEE DRG 401). LOUVER SLOTS TO BE CLEANED OUT ALLOWING INSERTION ON NEW REPLICA GRP LOUVERS COMPLETE WITH STOP ENDS TO PREVENT SLIPPAGE. NEW LOUVERS TO BE FIXED INTO SLOTS USING LIME MORTAR. (NO FIXINGS INTO STONEMASONRY). AT LOWER LOUVERS SOUTH EAST POSITION EXISTING CENTRAL STONE MULLION TO BE REPAIRED AS PART OF WORK BY SPECIALIST STONE MASON.

EXISTING MBNL ANTENNA

PROPOSED 1No. VF ANTENNA MOUNTED ON EXISTING STEELWORK BEHIND EXISTING GRP LOUVERS

EXISTING MBNL ANTENNA

PROPOSED 300mm WIDE CABLE TRAY LAID HORIZONTAL ACROSS FLOORING TO EXTEND FROM EXISTING CABLE TRAY TO NEW ERS POSITIONS

EXISTING 300mm WIDE CABLE TRAY RUN AT LOW LEVEL TO EACH ANTENNA

PROPOSED 1No. VF ANTENNA MOUNTED ON EXISTING STEELWORK BEHIND EXISTING GRP LOUVERS

PROPOSED 5No. ERS'S MOUNTED ON NEW 1100mm LONG ERS RAIL MOUNTED TO 2No SUPPORT POLES BOLTED TO EXISTING STEELWORK

PROPOSED 2No. BOB BOX MOUNTED TO RAIL NEXT TO ERS

PROPOSED 2No. BOB BOX MOUNTED TO RAIL NEXT TO ERS

EXISTING OPEN GRID MESH ACCESS FLOOR

PROPOSED SAFETY HANDRAIL AND SELF-CLOSING ACCESS GATE TO BE FITTED AROUND ACCESS HATCH

PROPOSED 5No. ERS'S MOUNTED ON NEW 1100mm LONG ERS RAIL MOUNTED TO 2No SUPPORT POLES BOLTED TO EXISTING STEELWORK

EXISTING HOOPED ACCESS LADDER

EXISTING MBNL ANTENNA

PROPOSED 300mm WIDE CABLE TRAY LAID HORIZONTAL ACROSS FLOORING TO EXTEND FROM EXISTING CABLE TRAY TO NEW ANTENNA & ERS POSITIONS

PROPOSED 1No. VF ANTENNA MOUNTED ON EXISTING STEELWORK BEHIND EXISTING GRP LOUVERS

PROPOSED 1No. VF ANTENNA TO BE MOUNTED ON NEW STEELWORK BEHIND NEW GRP LOUVERS

PROPOSED 5No. ERS'S MOUNTED ON NEW 1100mm LONG ERS RAIL MOUNTED TO 2No SUPPORT POLES BOLTED TO EXISTING STEELWORK

EXISTING ORIGINAL STORED SLATE LOUVERS TO BE REPOSITIONED AS NECESSARY ON GRILLAGE OVER BEAM SUPPORTS. ADDITIONAL SLATE LOUVERS REMOVED BY SPECIALIST STONE MASONS FROM SOUTH EAST FACE TO ALSO BE LOGGED AND STORED ON STEELWORK PLATFORM

PROPOSED 2No. BOB BOX MOUNTED TO RAIL NEXT TO ERS

PROPOSED ANTENNA PLAN (1:25)



A	Issued for Construction	GB	DR	08.07.21
REV	MODIFICATION	BY	CH	DATE



Cell Name	Opt.
ST MARY WITH ALL SOULS	-

Cell ID No		
CORNERSTONE	TEF	VF
E314507	-	77175_10
14839224	-	

Site Address / Contact Details  
 ST MARY WITH ALL SOULS CHURCH  
 PRIORY ROAD  
 SOUTH HAMPSTEAD  
 LONDON  
 NW6 4SN

Drawing Title: PROPOSED ANTENNA PLAN		Dwg Rev:
Purpose of issue: CONSTRUCTION		A
Drawing Number: 401		A
Surveyed By: DR	Original Sheet Size: A3	Pack Issue:
Drawn: GB	Date: 08.07.21	Checked: GD
Date: 08.07.21	Date: 08.07.21	A

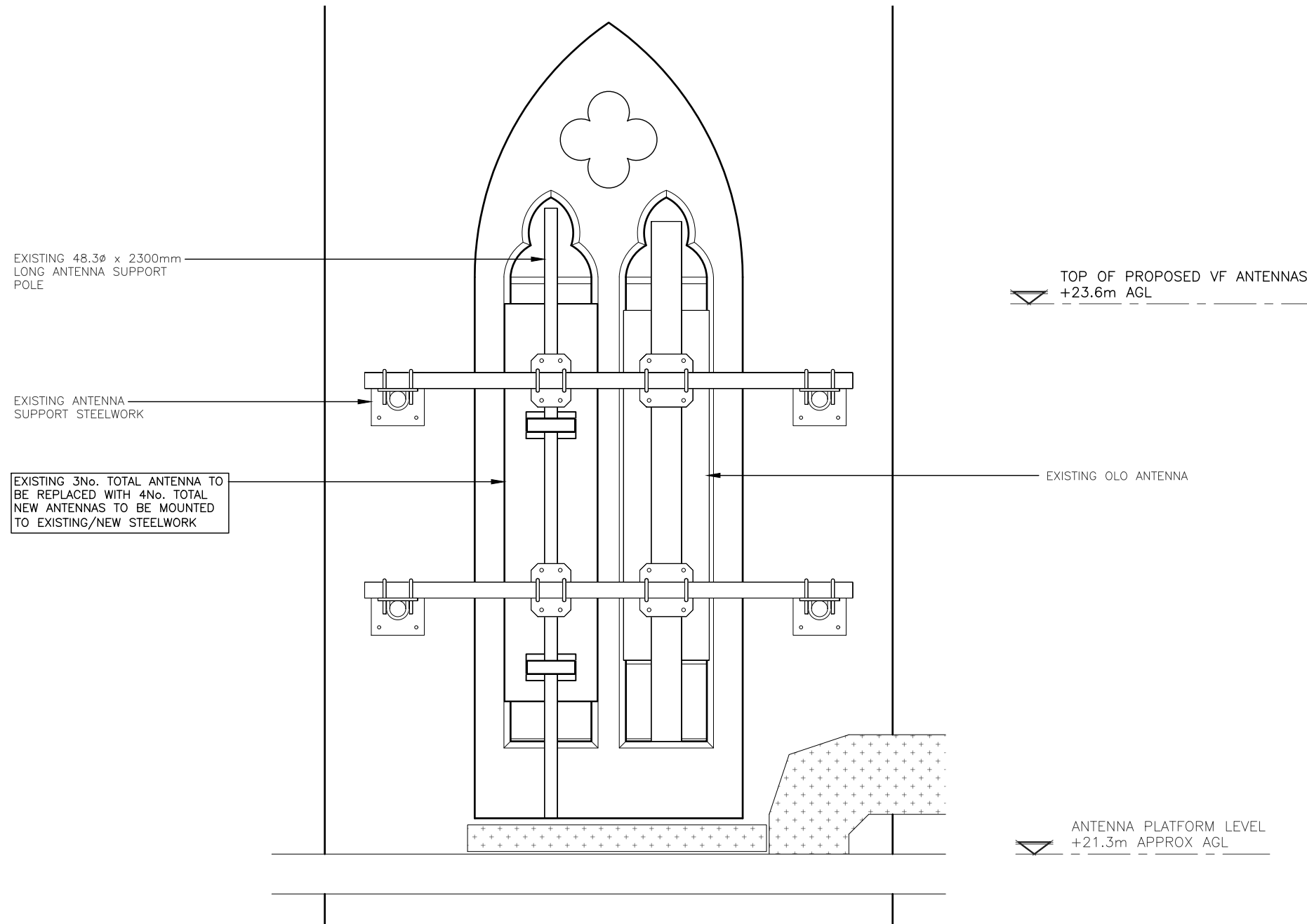
The drawings comply with Vodafone Standard ICNIRP guidelines.  
 Designed in accordance with CORNERSTONE document: SDN0009

ALL DIMENSIONS ARE IN mm UNLESS NOTED OTHERWISE

N.G.R | E: 525656 | N: 184022

NOTES:

AT REQUIRED LOCATIONS TO THE FRONT OF PROPOSED ANTENNA THE EXISTING SLATE LOUVERS ARE TO BE REMOVED (BY SPECIALIST STONE MASON APPROVED BY CHURCH ARCHITECT) LOGGED, LABELED AND STORED. REMOVED SLATE LOUVERS ARE TO BE STORED ON THE STEELWORK PLATFORM AT 21.3m AGL. (SEE DRG 401). LOUVER SLOTS TO BE CLEANED OUT ALLOWING INSERTION ON NEW REPLICA GRP LOUVERS COMPLETE WITH STOP ENDS TO PREVENT SLIPPAGE. NEW LOUVERS TO BE FIXED INTO SLOTS USING LIME MORTAR. (NO FIXINGS INTO STONWORK). AT LOWER LOUVERS SOUTH EAST POSITION EXISTING CENTRAL STONE MULLION TO BE REPAIRED AS PART OF WORK BY SPECIALIST STONE MASON.



TYPICAL PROPOSED ANTENNA ELEVATION  
(1:20)

A	Issued for Construction	GB	DR	08.07.21
REV	MODIFICATION	BY	CH	DATE



Cell Name	Opt.
ST MARY WITH ALL SOULS	-

Cell ID No		
CORNERSTONE	TEF	VF
E314507		
14839224	-	77175_10

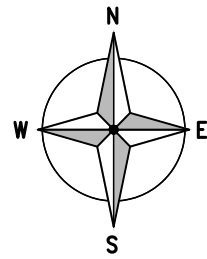
Site Address / Contact Details  
ST MARY WITH ALL SOULS CHURCH  
PRIORY ROAD  
SOUTH HAMPSTEAD  
LONDON  
NW6 4SN

Drawing Title:  
TYPICAL PROPOSED ANTENNA ELEVATION

Purpose of issue:	CONSTRUCTION	Dwg Rev:
Drawing Number:	402	A

Surveyed By:	DR	Original Sheet Size:	A3	Pack Issue:
Drawn:	GB	Date:	08.07.21	Checked:
				Date:
				08.07.21

Drawn:	GB	Date:	08.07.21	Checked:	GD	Date:	08.07.21	Pack Issue:	A
--------	----	-------	----------	----------	----	-------	----------	-------------	---



FOR SITE DESIGN DEPENDENCIES REFER TO DRAWING 504

ALL DIMENSIONS ARE IN mm UNLESS NOTED OTHERWISE

N.G.R | E: 525656 N: 184022

NOTES:

COLOUR KEY

SHARED EQUIPMENT	
VF ALLOCATED EQUIPMENT	
TEF ALLOCATED EQUIPMENT	

A	Issued for Construction	GB	DR	08.07.21
REV	MODIFICATION	BY	CH	DATE



Cell Name	Opt.
ST MARY WITH ALL SOULS	-

Cell ID No		
CORNERSTONE	TEF	VF
E314507	-	77175_10
14839224	-	

Site Address / Contact Details  
 ST MARY WITH ALL SOULS CHURCH  
 PRIORY ROAD  
 SOUTH HAMPSTEAD  
 LONDON  
 NW6 4SN

Drawing Title:  
 PROPOSED EQUIPMENT LAYOUT

Purpose of issue:  
 CONSTRUCTION

Drawing Number:  
 403

Surveyed By:  
 DR

Original Sheet Size:  
 A3

Drawn: GB Date: 08.07.21 Checked: GD Date: 08.07.21 Pack Issue: A

EXISTING REDUNDANT GALVANISED STEEL HOOPED ACCESS LADDER DOWN TO BELL CHAMBER

EXISTING STEEL GRILLAGE ON PLATFORM

EXISTING WALLS TAPER IN ABOVE PLATFORM

EXISTING GALVANISED STEEL ACCESS LADDER UP TO ANTENNA PLATFORM

EXISTING GALVANISED STEEL HANDRAIL AROUND PLATFORM

EXISTING DISTRIBUTION BOARD

EXISTING BT WALL MOUNTED TRANSMISSION

EXISTING 300mm WIDE VERTICALLY MOUNTED CABLE TRAY LINKING EQUIPMENT CABINETS TO ANTENNAS ABOVE

EXISTING VF ERICSSON RBS6120 OUTDOOR EQUIPMENT CABINET ON STEEL PLATFORM

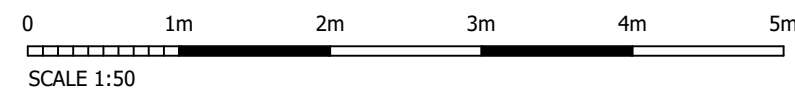
PROPOSED VF CSC CABINET TO BE MOUNTED ON STEEL PLATFORM

PROPOSED SAFETY HANDRAIL AND SELF-CLOSING ACCESS GATE TO BE FITTED AROUND ACCESS HATCH

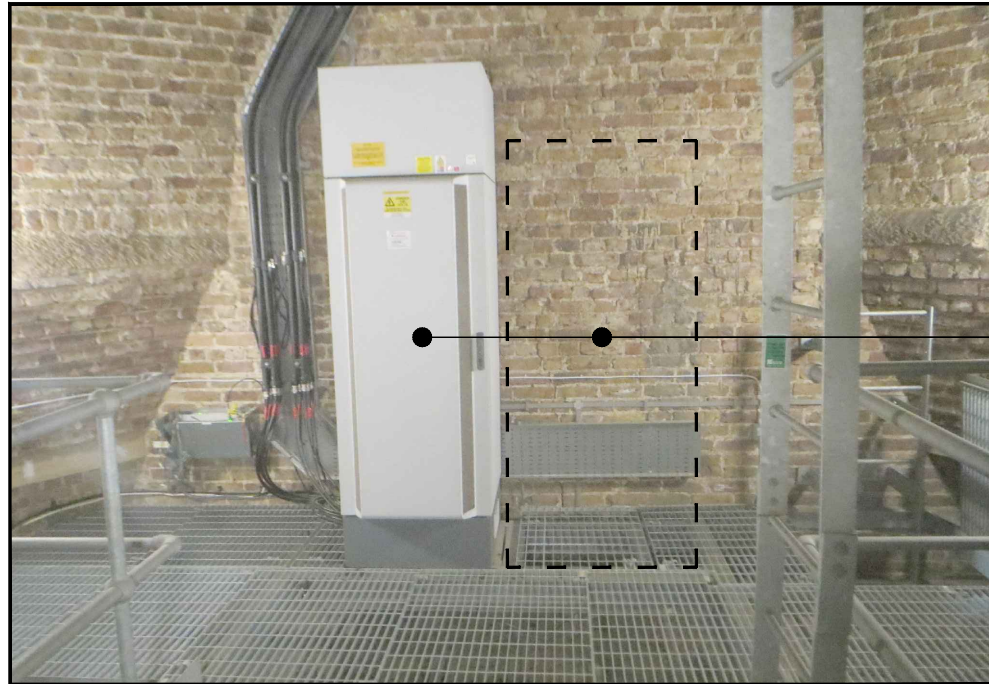
EXISTING GALVANISED STEEL FIXED HOOPED ACCESS LADDER WITH PERSONNEL ACCESS HATCH

EXISTING OPEN GRID MESH HATCH

PROPOSED EQUIPMENT LAYOUT  
 (1:50)



The drawings comply with Vodafone Standard ICNIRP guidelines.  
 Designed in accordance with CORNERSTONE document: SDN0009

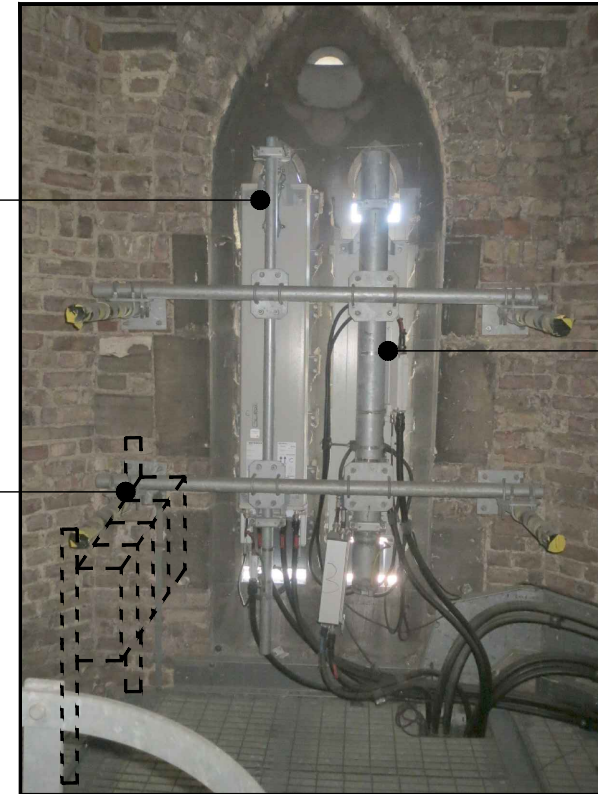


EQUIPMENT WITHIN TOWER

PROPOSED VF CSC CABINET TO BE LOCATED ADJACENT TO EXISTING VF CABINET

EXISTING VF ANTENNA TO BE REPLACED

PROPOSED VF ERS TO BE MOUNTED ON TO RAILS ON SUPPORT POLES BOLTED TO STEELWORK PLATFORM



TYPICAL EXISTING ANTENNA

EXISTING OLO ANTENNA



PROPOSED LOCATION OF ADDITIONAL ANTENNA

PROPOSED ANTENNA POSITION IN UPPER LOUVER WINDOWS ON NEW STEELWORK. EXISTING STONE LOUVERS TO BE REPLACED WITH GRP REPLICAS

PROPOSED VF ERS TO BE MOUNTED ON TO RAILS ON SUPPORT POLES BOLTED TO STEELWORK PLATFORM



PROPOSED LOCATIONS OF ERS

ALL DIMENSIONS ARE IN mm UNLESS NOTED OTHERWISE

N.G.R | E: 525656 N: 184022

NOTES:  
 AT REQUIRED LOCATIONS TO THE FRONT OF PROPOSED ANTENNA THE EXISTING SLATE LOUVERS ARE TO BE REMOVED (BY SPECIALIST STONE MASON APPROVED BY CHURCH ARCHITECT) LOGGED, LABELED AND STORED. REMOVED SLATE LOUVERS ARE TO BE STORED ON THE STEELWORK PLATFORM AT 21.3m AGL. (SEE DRG 401). LOUVER SLOTS TO BE CLEANED OUT ALLOWING INSERTION ON NEW REPLICA GRP LOUVERS COMPLETE WITH STOP ENDS TO PREVENT SLIPPAGE. NEW LOUVERS TO BE FIXED INTO SLOTS USING LIME MORTAR. (NO FIXINGS INTO STONWORK). AT LOWER LOUVERS SOUTH EAST POSITION EXISTING CENTRAL STONE MULLION TO BE REPAIRED AS PART OF WORK BY SPECIALIST STONE MASON.

A	Issued for Construction	GB	DR	08.07.21
REV	MODIFICATION	BY	CH	DATE



Cell Name	Opt.
ST MARY WITH ALL SOULS	-

Cell ID No		
CORNERSTONE	TEF	VF
E314507		
14839224	-	77175_10

Site Address / Contact Details  
 ST MARY WITH ALL SOULS CHURCH  
 PRIORY ROAD  
 SOUTH HAMPSTEAD  
 LONDON  
 NW6 4SN

Drawing Title:  
 PHOTO PAGE - SHEET 1

Purpose of issue:  
 CONSTRUCTION

Drawing Number:  
 404

Surveyed By:  
 DR

Original Sheet Size:  
 A3

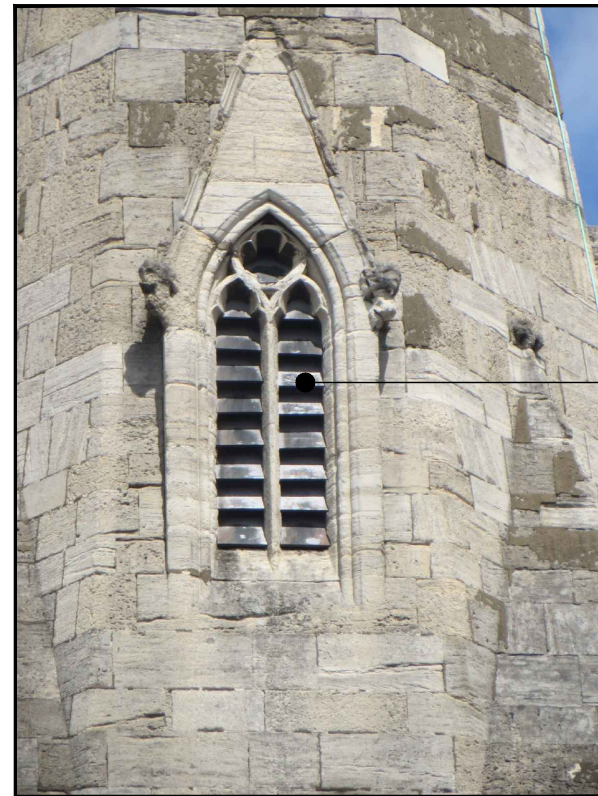
Drawn: GB Date: 08.07.21 Checked: GD Date: 08.07.21 Pack Issue: A

ALL DIMENSIONS ARE IN mm UNLESS NOTED OTHERWISE

N.G.R | E: 525656 N: 184022

NOTES:

AT REQUIRED LOCATIONS TO THE FRONT OF PROPOSED ANTENNA THE EXISTING SLATE LOUVERS ARE TO BE REMOVED (BY SPECIALIST STONE MASON APPROVED BY CHURCH ARCHITECT) LOGGED, LABELED AND STORED. REMOVED SLATE LOUVERS ARE TO BE STORED ON THE STEELWORK PLATFORM AT 21.3m AGL. (SEE DRG 401). LOUVER SLOTS TO BE CLEANED OUT ALLOWING INSERTION ON NEW REPLICA GRP LOUVERS COMPLETE WITH STOP ENDS TO PREVENT SLIPPAGE. NEW LOUVERS TO BE FIXED INTO SLOTS USING LIME MORTAR. (NO FIXINGS INTO STONWORK). AT LOWER LOUVERS SOUTH EAST POSITION EXISTING CENTRAL STONE MULLION TO BE REPAIRED AS PART OF WORK BY SPECIALIST STONE MASON.



EXTERNAL VIEW OF UPPER LOUVER WINDOWS

PROPOSED LOCATION OF UPPER ANTENNAS

PHOTO PAGE – SHEET 2  
(NTS)

A	Issued for Construction	GB	DR	08.07.21
REV	MODIFICATION	BY	CH	DATE



Cell Name	Opt.
ST MARY WITH ALL SOULS	-

Cell ID No		
CORNERSTONE	TEF	VF
E314507		
14839224	-	77175_10

Site Address / Contact Details

ST MARY WITH ALL SOULS CHURCH  
PRIORY ROAD  
SOUTH HAMPSTEAD  
LONDON  
NW6 4SN

Drawing Title:  
PHOTO PAGE – SHEET 2

Purpose of issue:  
CONSTRUCTION

Dwg Rev:  
A

Drawing Number:  
405

Surveyed By:  
DR

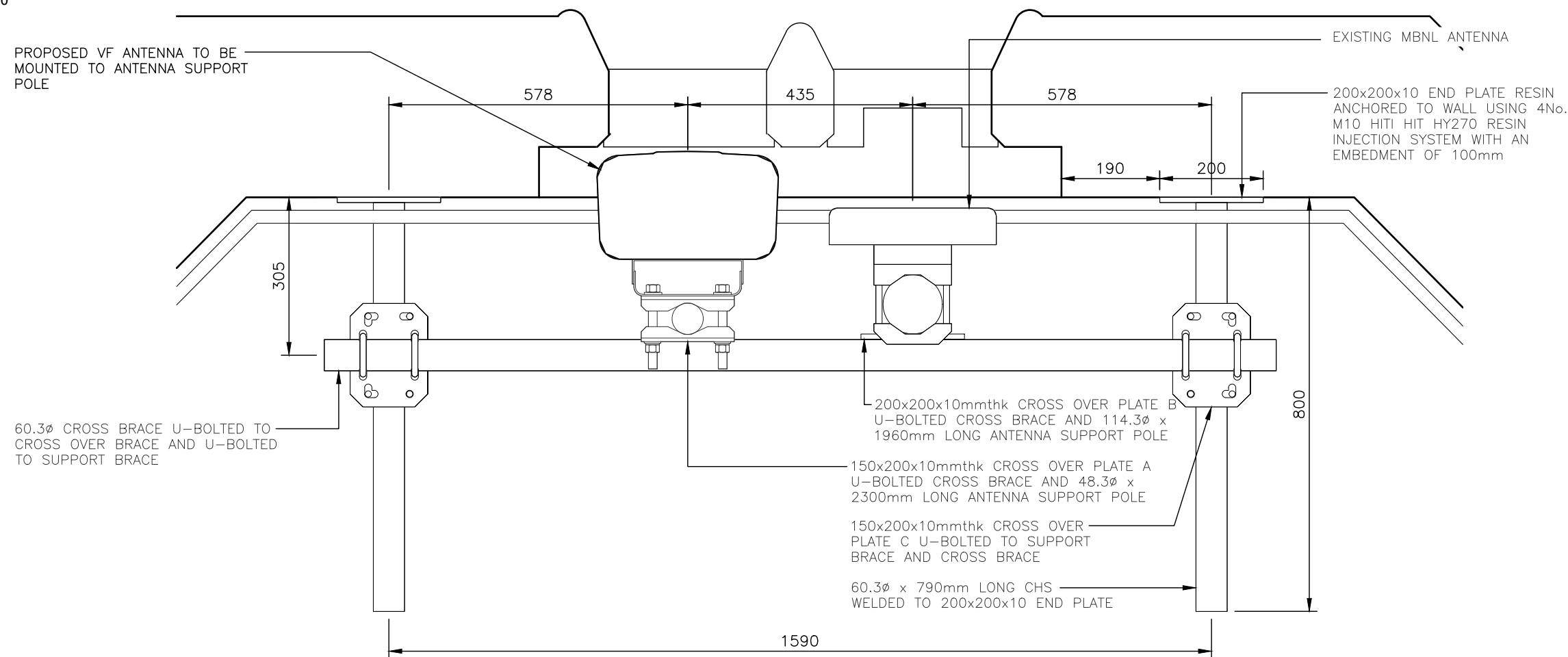
Original Sheet Size:  
A3

Pack Issue:  
A

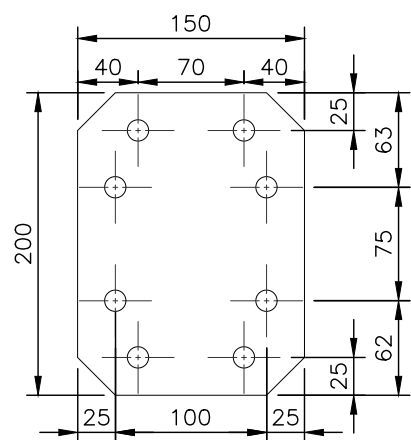
Drawn: GB	Date: 08.07.21	Checked: GD	Date: 08.07.21	A
--------------	-------------------	----------------	-------------------	---

0 1m 2m 3m 4m 5m

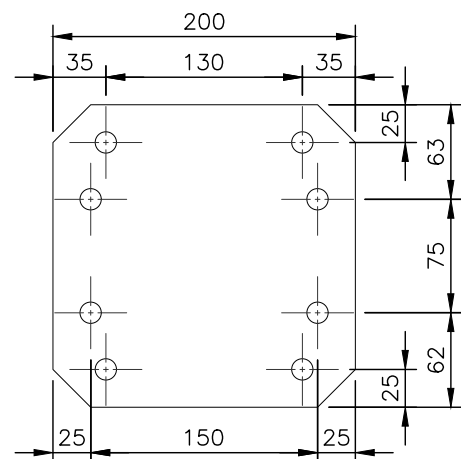
SCALE 1:50



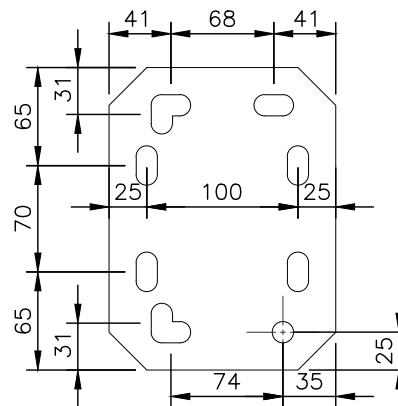
DETAIL ANTENNA SUPPORT PLAN  
(1:50)



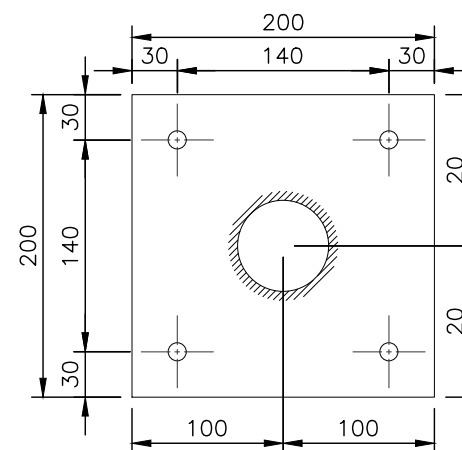
CROSS OVER PLATE A  
(1:5)



CROSS OVER PLATE PLATE B  
(1:5)



CROSS OVER PLATE PLATE C  
(1:5)



END PLATE  
(1:5)

PROPOSED ANTENNA SUPPORT DETAILS – SECTORS 1,3&4

0 0.1m 0.2m 0.3m 0.4m 0.5m

SCALE 1:5

ALL DIMENSIONS ARE IN mm UNLESS NOTED OTHERWISE

N.G.R | E: 525656 N: 184022

NOTES:

A	Issued for Construction	GB	GD	08.07.21
REV	MODIFICATION	BY	CH	DATE



Cell Name	Opt.
ST MARY WITH ALL SOULS	-

Cell ID No

CORNERSTONE	TEF	VF
E314507	-	77175_10
14839224		

Site Address / Contact Details

ST MARY WITH ALL SOULS CHURCH  
PRIORY ROAD  
SOUTH HAMPSTEAD  
LONDON  
NW6 4SN

Drawing Title:  
PROPOSED ANTENNA SUPPORT DETAILS – SECTORS 1,3&4

Purpose of issue: CONSTRUCTION

Drawing Number: 601

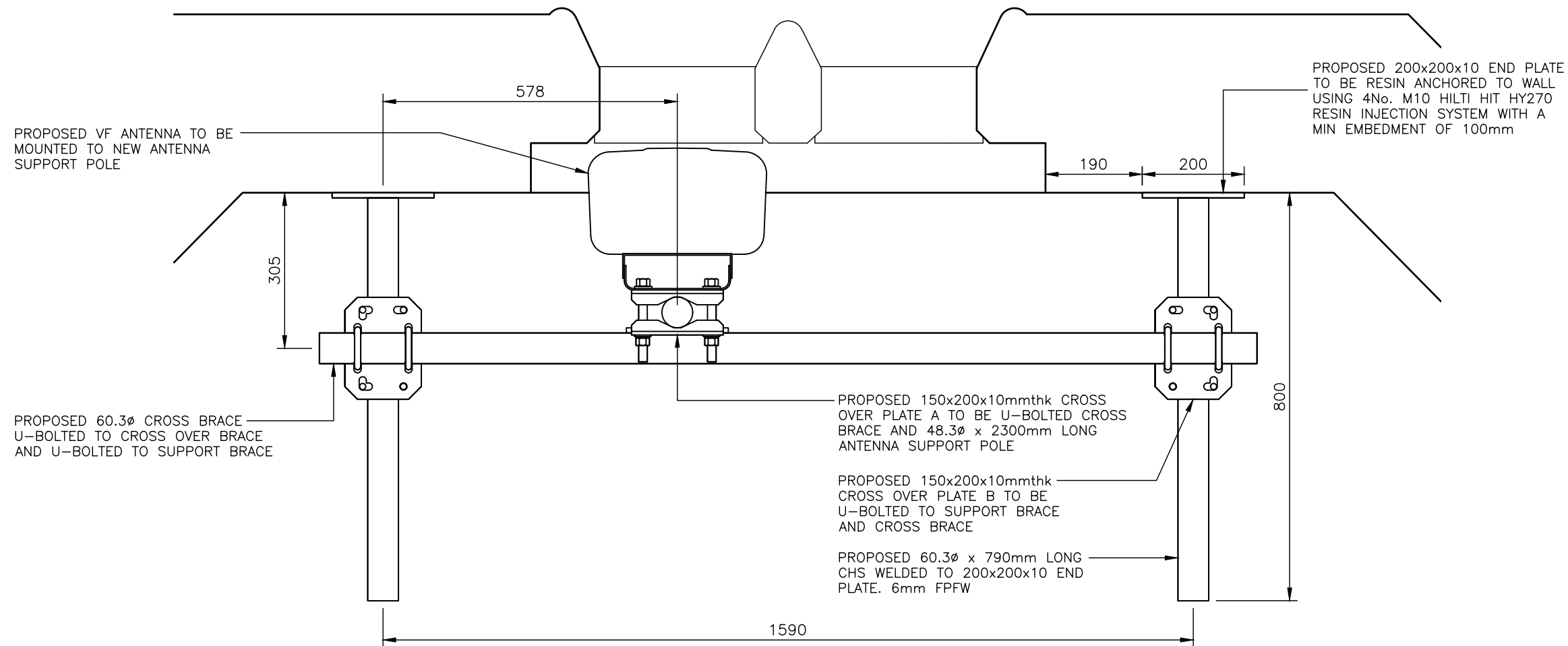
Surveyed By: DR Original Sheet Size: A3

Drawn: GB Date: 08.07.21 Checked: GD Date: 08.07.21

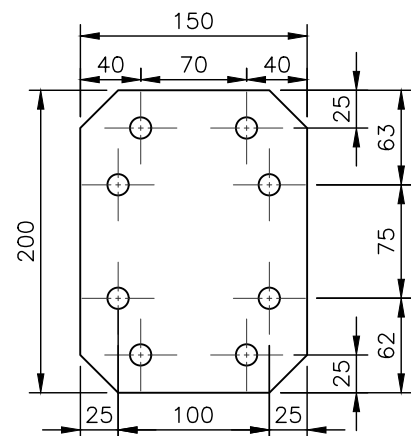


0 1m 2m 3m 4m 5m

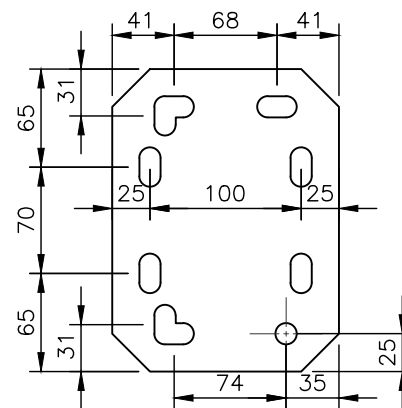
SCALE 1:50



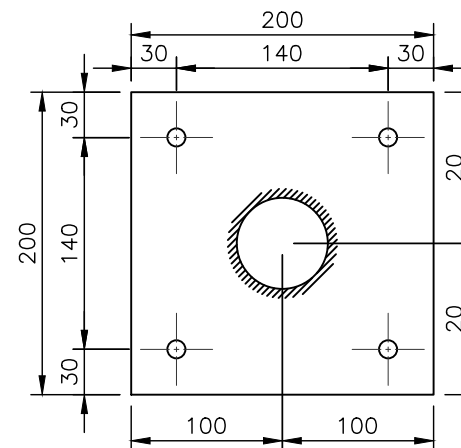
DETAIL ANTENNA SUPPORT PLAN  
(1:50)



CROSS OVER PLATE A  
(1:5)



CROSS OVER PLATE B  
(1:5)



END PLATE  
(1:5)

PROPOSED ANTENNA SUPPORT DETAILS – SECTOR 2

0 0.1m 0.2m 0.3m 0.4m 0.5m

SCALE 1:5

ALL DIMENSIONS ARE IN mm UNLESS NOTED OTHERWISE

N.G.R | E: 525656 N: 184022

NOTES:

A	Issued for Construction	GB	GD	08.07.21
REV	MODIFICATION	BY	CH	DATE

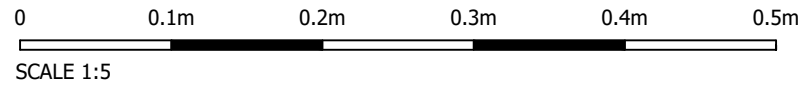


Cell Name		Opt.
ST MARY WITH ALL SOULS		-
Cell ID No		
CORNERSTONE	TEF	VF
E314507	-	77175_10
14839224	-	

Site Address / Contact Details

ST MARY WITH ALL SOULS CHURCH  
PRIORY ROAD  
SOUTH HAMPSTEAD  
LONDON  
NW6 4SN

Drawing Title: PROPOSED ANTENNA SUPPORT DETAILS – SECTOR 2				
Purpose of issue: CONSTRUCTION				Dwg Rev:
Drawing Number: 602				A
Surveyed By: DR		Original Sheet Size: A3		Pack Issue:
Drawn: GB	Date: 08.07.21	Checked: GD	Date: 08.07.21	A



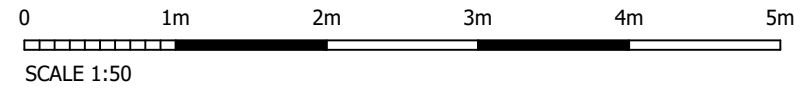
PROPOSED 1No VF GPS MODULE TO BE FIXED TO GALVANISED STEEL BRACKET MOUNTED DIRECTLY TO EXTERNAL CHURCH TOWER WALL ON SOUTH-EAST FACE USING RESIN ANCHORS. PROPOSED GPS MODULE AND BRACKET TO BE PAINTED TO MATCH STONEWORK

PLAN ON VF GPS MOUNTING (1:5)

PROPOSED 1No VF GPS MODULE TO BE FIXED TO GALVANISED STEEL BRACKET MOUNTED DIRECTLY TO EXTERNAL CHURCH TOWER WALL ON SOUTH-EAST FACE USING RESIN ANCHORS. PROPOSED GPS MODULE AND BRACKET TO BE PAINTED TO MATCH STONEWORK

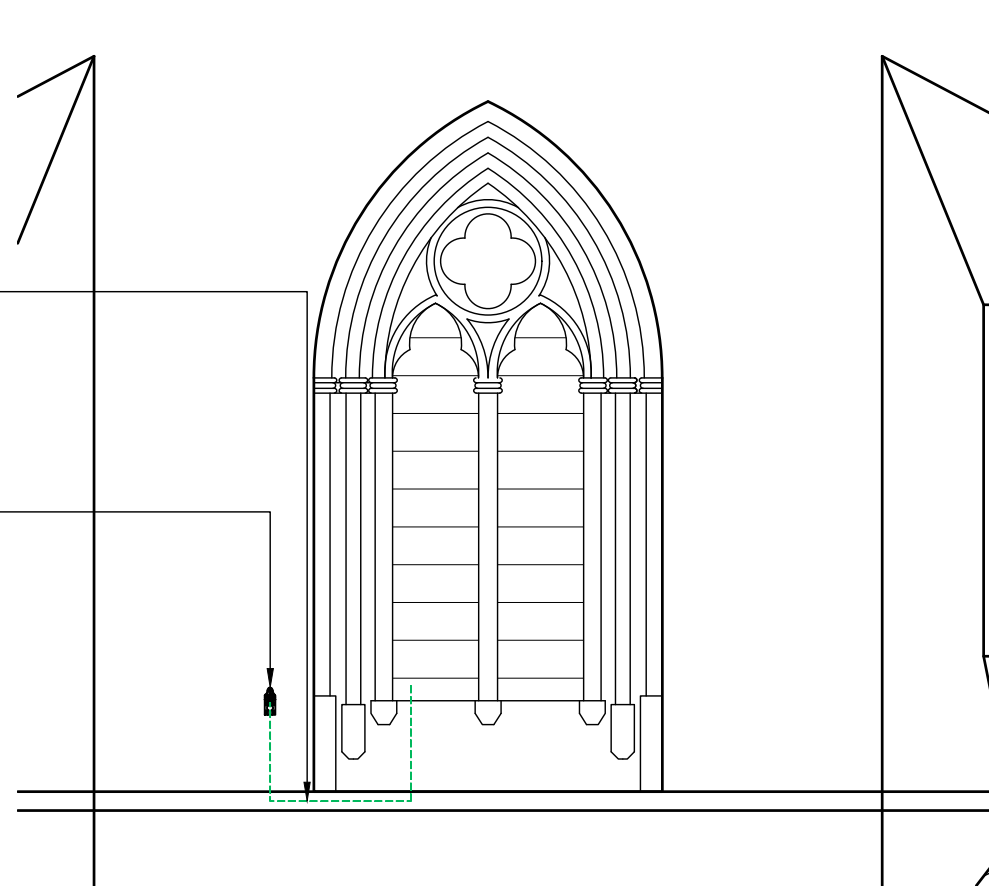
GPS MODULE MOUNTING BRACKET

ELEVATION ON VF GPS MOUNTING (1:5)



PROPOSED 1No VF GPS CABLE TO RUN INTO TOWER FROM GPS MODULE FOLLOWING EXISTING LP EARTH TAPE VIA WINDOW AND ENTER TOWER AND RUN TO EQUIPMENT LOCATION CLIPPED TO WALL

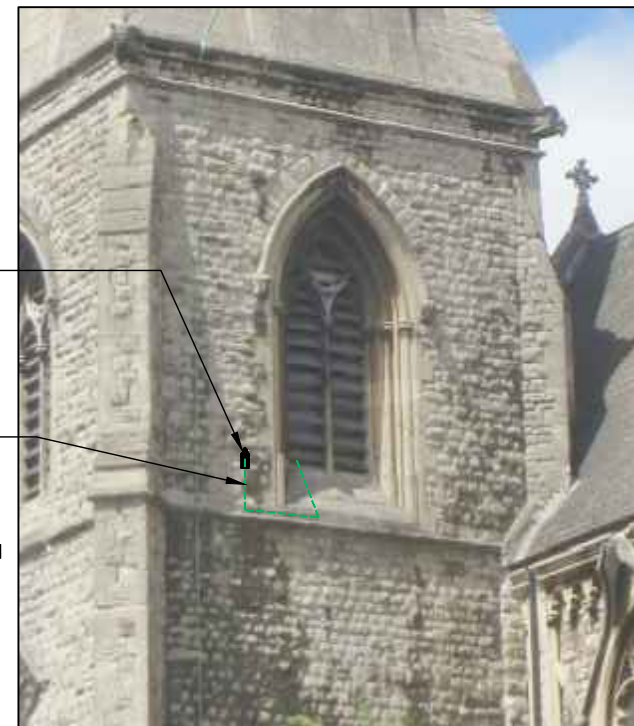
PROPOSED 1No VF GPS MODULE TO BE FIXED TO GALVANISED STEEL BRACKET MOUNTED DIRECTLY TO EXTERNAL CHURCH TOWER WALL ON EAST FACE USING RESIN ANCHORS. PROPOSED GPS MODULE AND BRACKET TO BE PAINTED TO MATCH STONEWORK



PART SOUTH-EAST TOWER ELEVATION (1:50)

PROPOSED 1No VF GPS MODULE TO BE FIXED TO GALVANISED STEEL BRACKET MOUNTED DIRECTLY TO EXTERNAL CHURCH TOWER EAST WALL

PROPOSED 1No VF GPS CABLE TO RUN INTO TOWER FROM GPS MODULE FOLLOWING EXISTING LP EARTH TAPE VIA WINDOW AND ENTER TOWER AND RUN TO EQUIPMENT LOCATION CLIPPED TO WALL



VF GPS MODULE LOCATION SOUTH-EAST ELEVATION (NTS)

NOTE:  
DIMENSIONS BETWEEN FIXINGS ARE SIZED TO ENABLE ALL FIXINGS IN BRICKWORK TO BE POSITIONED IN THE CENTRE OF THE RELEVANT BRICK. ALL FIXING DIMENSIONS ARE BASED UPON METRIC BRICK SIZES. IF COURSING DETAILS ARE DIFFERENT, SPACING BETWEEN FIXINGS SHOULD BE CHANGED TO SUIT

ALL DIMENSIONS ARE IN mm UNLESS NOTED OTHERWISE

N.G.R | E: 525656 N: 184022

NOTES:

A	Issued for Construction	GB	GD	08.07.21
REV	MODIFICATION	BY	CH	DATE



Cell Name	Opt.
ST MARY WITH ALL SOULS	-

Cell ID No		
CORNERSTONE	TEF	VF
E314507		
14839224	-	77175_10

Site Address / Contact Details  
ST MARY WITH ALL SOULS CHURCH  
PRIORY ROAD  
SOUTH HAMPSTEAD  
LONDON  
NW6 4SN

Drawing Title:  
VF GPS LOCATION/MOUNTING DETAILS

Purpose of issue: CONSTRUCTION Dwg Rev:

Drawing Number: 612 A

Surveyed By: DR Original Sheet Size: A3 Pack Issue:

Drawn: GB Date: 08.07.21 Checked: GD Date: 08.07.21 A