

# Arthur Stanley House

## Planning Conditions Response\_04a Hit & Miss Screen

---



## Condition No. 04 - Facing Brick Sample

*CONDITION 04: A sample panel of the facing brickwork (1.5 x 1.5 metres) demonstrating the proposed colour, texture, face-bond and pointing shall be provided on site and approved in writing by the local planning authority before the relevant parts of the works are commenced and the development shall be carried out in accordance with the approval given. The approved panel shall be retained on site until the work has been completed.*

**This is the last item under condition 04 requiring discharge, facing and glazed bricks have already been discharged under a separate submissions.**

## Response

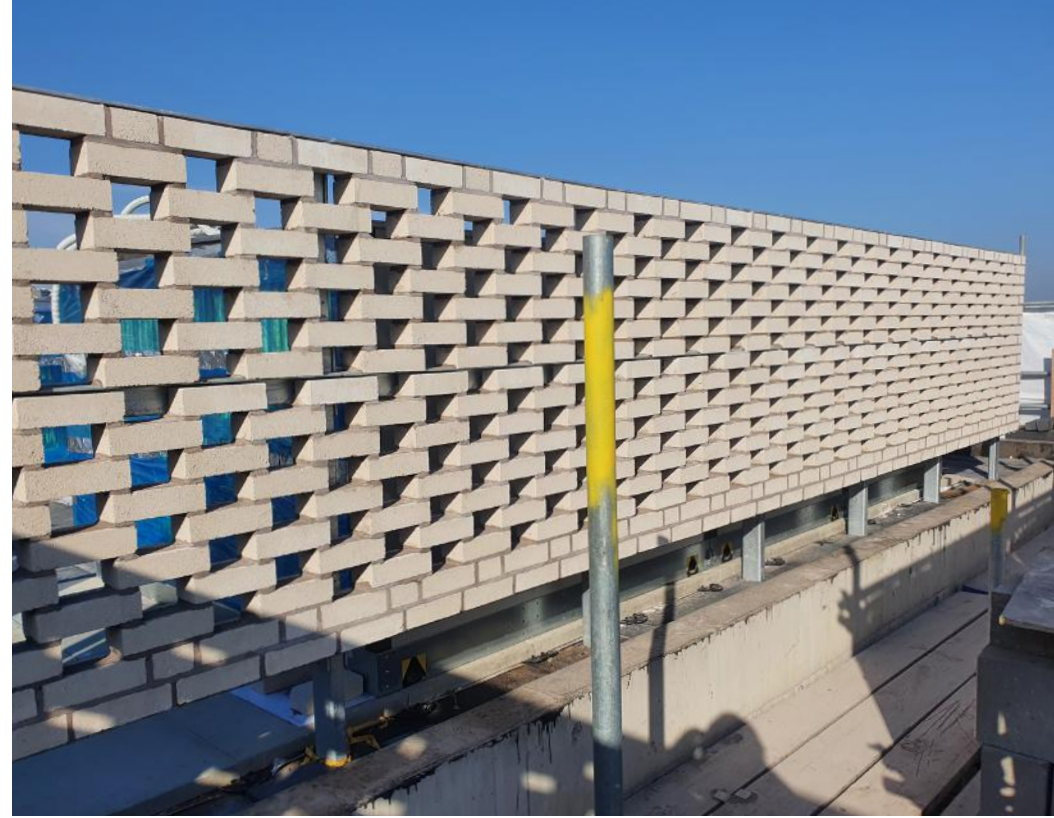
This report aims to provide a set of detailed information in relation to the proposed hit & miss brick plant screens to both L05 and L08 roofs.

The information in this report reflects the detailed design development carried out with the contractor & their specialists. Consequently, there are minor alterations to some dimensions from those provided in the Approved design.



## Planning Condition 04a

### Hit & Miss Brick Screen Photographs

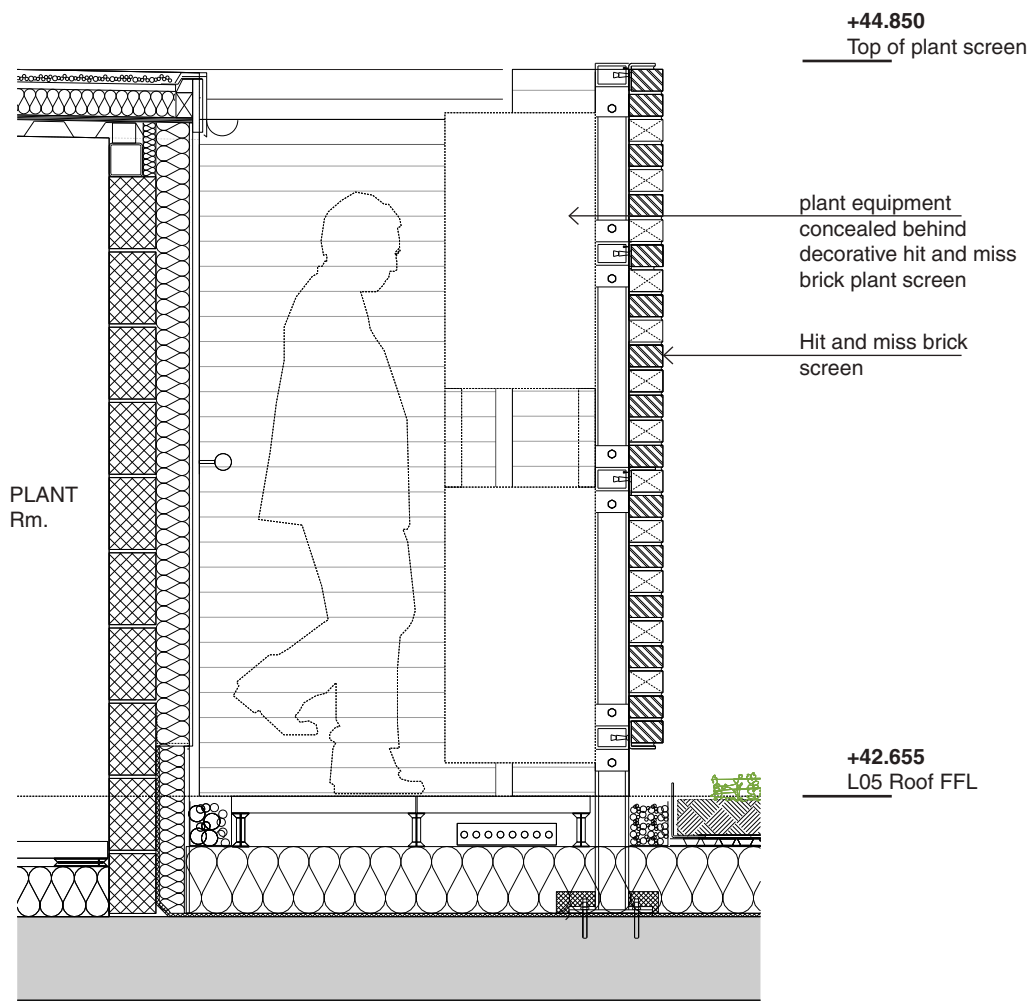


Enenhall Caselton White concrete brick (to match main elevations and discharged separately)  
mounted on a galvanised structural frame

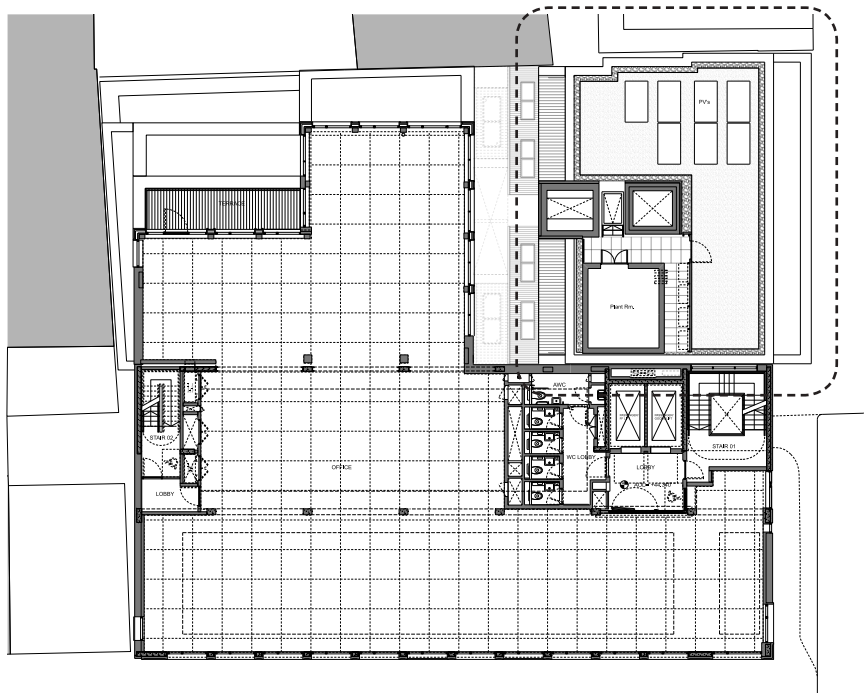


# Planning Condition 04a

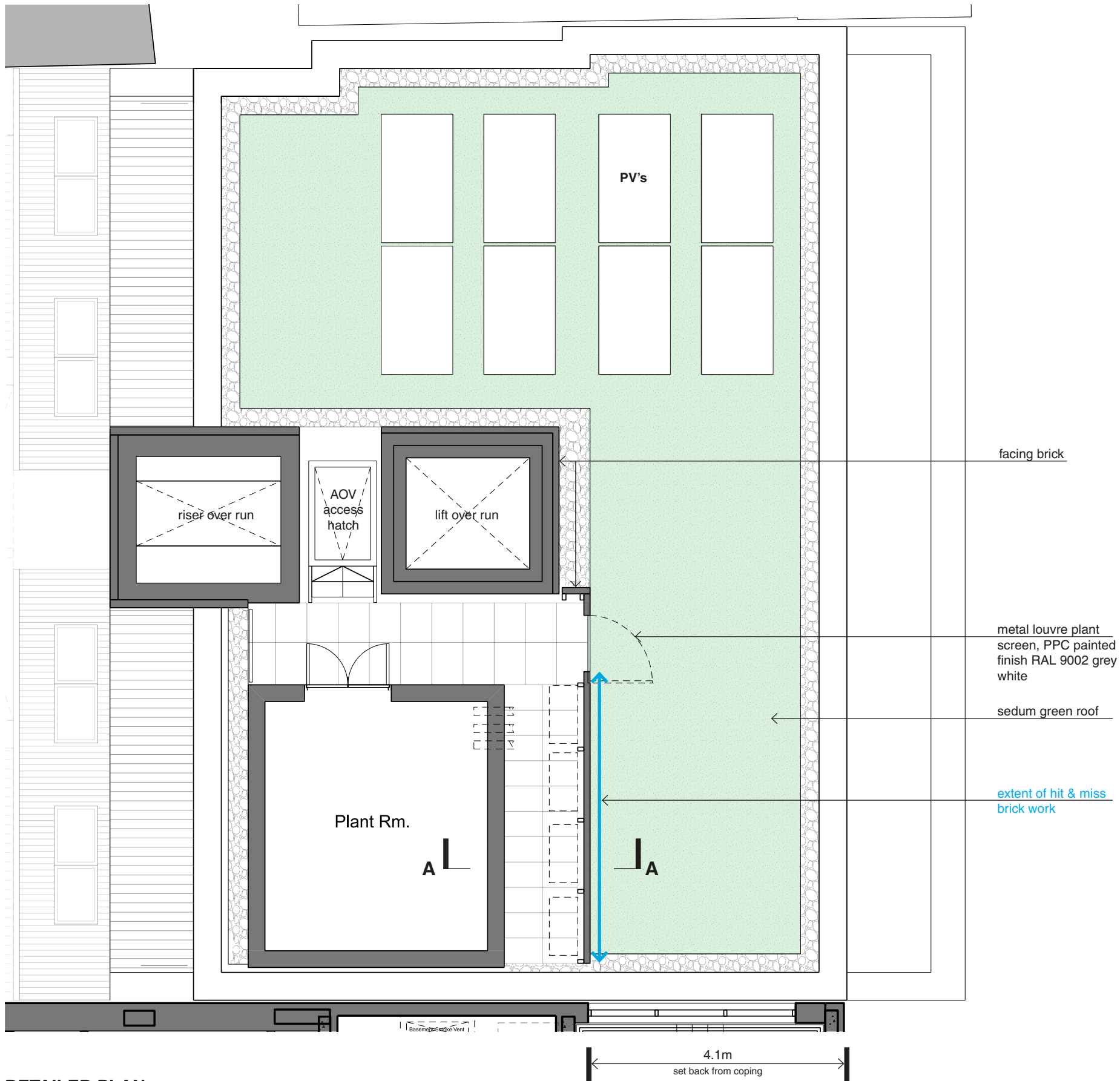
## Hit & Miss Brick Screen: Residential Building



SECTION AA: Detailed section through hit & miss plant screen

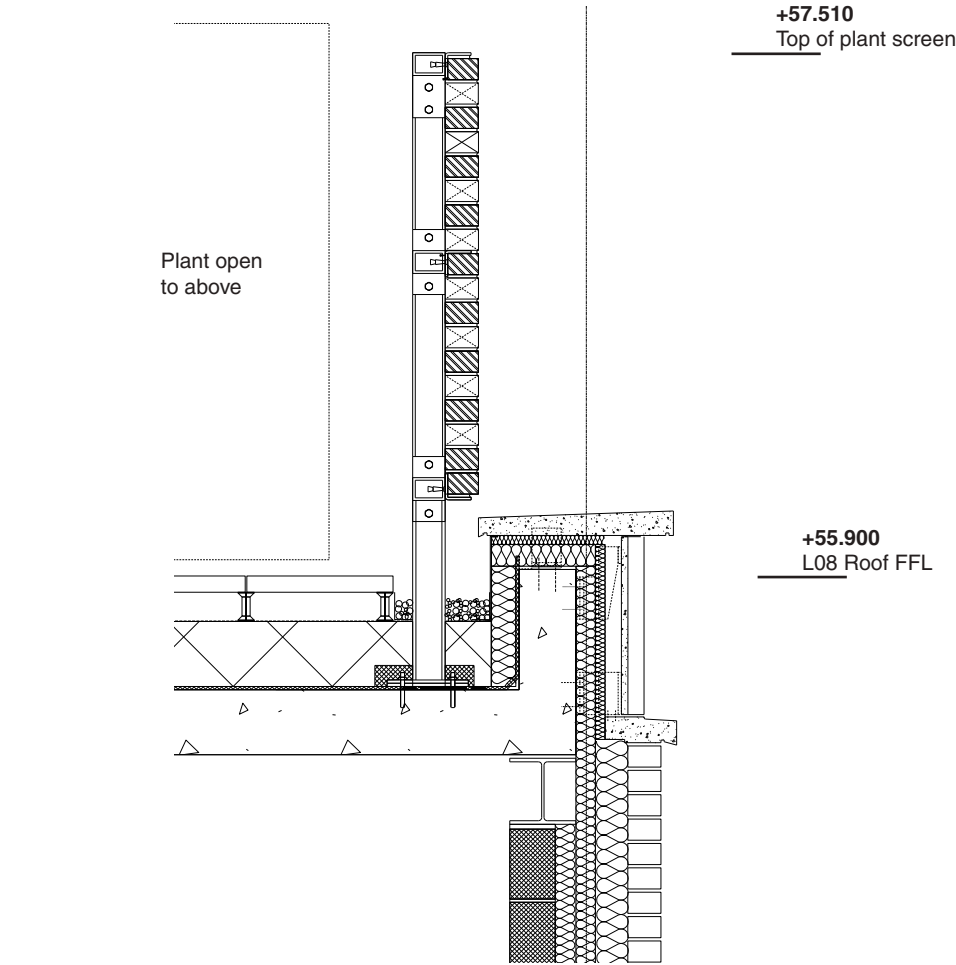


GA PLAN: L05 Plan showing residential roof

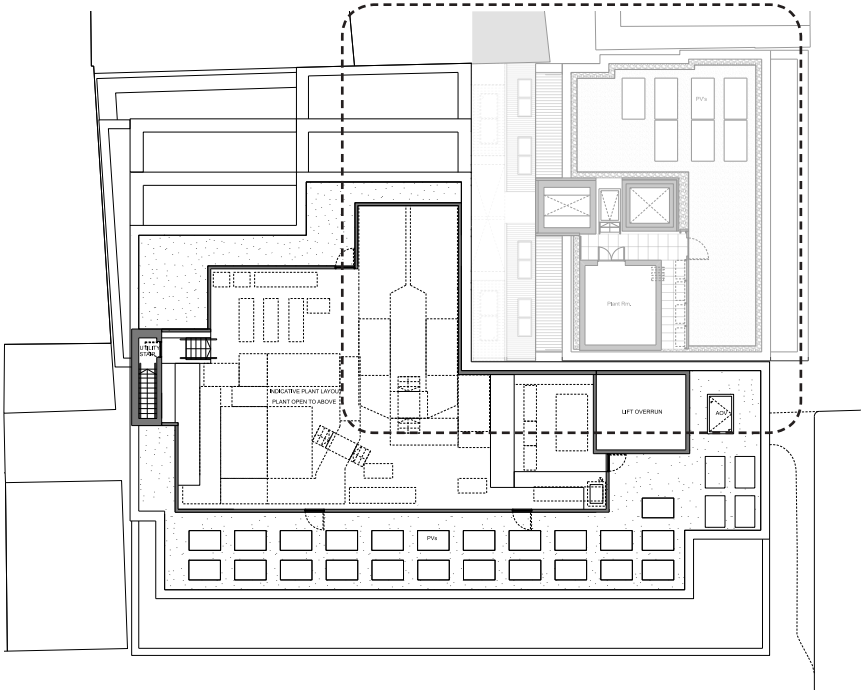


DETAILED PLAN: L05 Plan residential roof

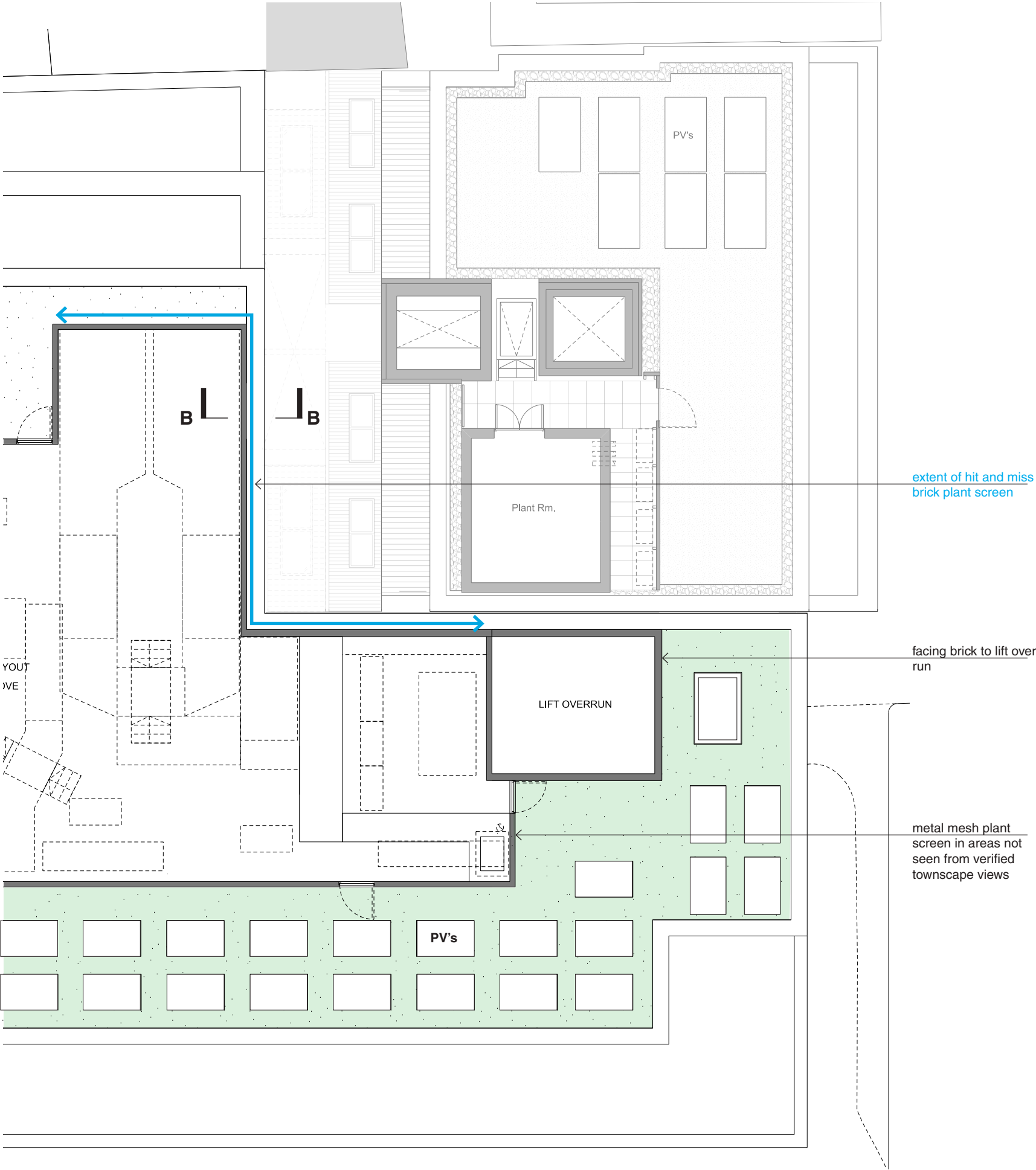
Planning Condition 04a  
Hit & Miss Brick Screen: Office



SECTION BB: Detailed section through hit & miss plant screen

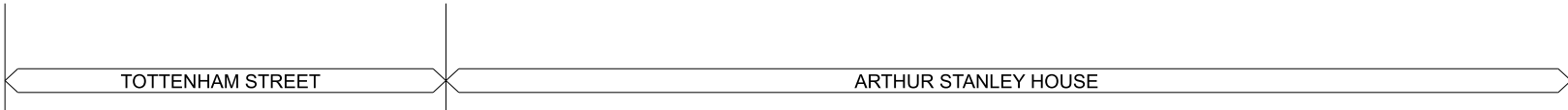


GA PLAN: L08 Plan showing office roof



DETAILED PLAN: L08 Plan office roof





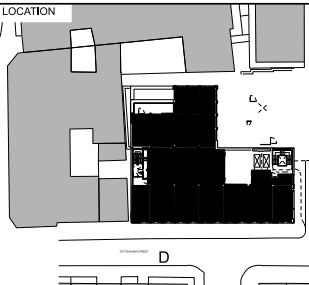
KEY

REV	DATE	
P01	21/07/17	Issue for Planning
P02	30/11/17	Revised Issue for Planning with amendments
P03	02/03/18	Revised Issue for Planning with amendments
P04	25/02/20	Revised Issue for Planning with minor amendments
P05	13/03/20	Revised Issue for Planning with minor amendments
P06	14/07/21	Revised Issue for discharge of planning condition 04
August 2021 Hit & miss brick scope clarified for discharge of condition 04		

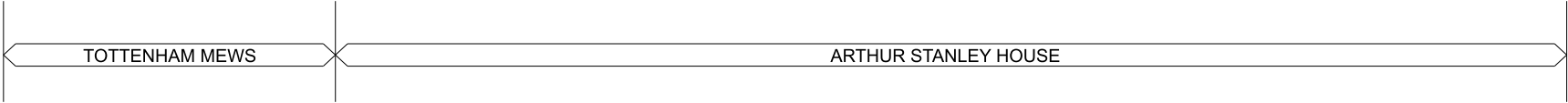
CONSULTANTS	
CLIENT:	
STRUCTURAL ENGINEER:	
MECHANICAL ENGINEER:	
COST CONSULTANT:	
PROJECT MANAGER:	
FIRE ENGINEER:	
APPROVED INSPECTOR:	
PLANNING CONSULTANT:	
DAY LIGHT/ SUNLIGHT:	
PARTY WALL CONSULTANT:	
RESIDENTIAL ARCHITECT	

NOTE

1. Do not scale from this drawing.  
2. All dimensions to be checked on site by the contractor and such dimensions to be his responsibility.  
3. Report all drawing errors, omissions and discrepancies to the architect.  
4. This document may be issued in an uncontrolled CAD format to enable others to use it as background information to make alterations and/or additions. In that instance the file will be accompanied by a PDF version. It is for those making such alterations and additions to ensure that they make use of current background information.  
AHMM Ltd accepts no liability for any such alterations or additions to the background information or arising out of changes to background information which occur prior to alterations of additions being made.



ALLFORD HALL MONAGHAN MORRIS			
ARCHITECTS Ltd MORELANDS, 5-23 OLD STREET LONDON EC1V 9HL TEL 020 7251 5261 FAX 020 7251 5123 WEB WWW.AHMM.CO.UK			
Job title ARTHUR STANLEY HOUSE			
drawing title / location PROPOSED GA ELEVATION EAST ELEVATION			
drawn by LV	checked GH	scale 1:100@A1; 1:200@A3	status PLANNING
project 15068	zone	source classification (00)_P202	drawing no. revision



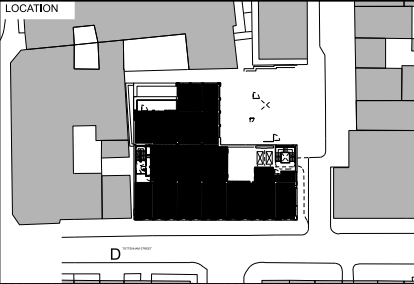
KEY	

REV	DATE	
P01	21/07/17	Issue for Planning
P02	30/11/17	Revised Issue for Planning with amendments
P03	02/03/18	Revised Issue for Planning with amendments
P04	25/02/20	Revised Issue for Planning with minor amendments
P05	13/03/20	Revised Issue for Planning with minor amendments
P06	28/01/21	Revised Issue for Planning with GP provision omitted
P07	14/07/21	Revised Issue for Planning condition discharge
August 2021 Hit & miss brick scope clarified for discharge of condition 4a		

CONSULTANTS	
CLIENT:	
STRUCTURAL ENGINEER:	
MECHANICAL ENGINEER:	
COST CONSULTANT:	
PROJECT MANAGER:	
FIRE ENGINEER:	
APPROVED INSPECTOR:	
PLANNING CONSULTANT:	
DAY LIGHT/ SUNLIGHT:	
PARTY WALL CONSULTANT:	
RESIDENTIAL ARCHITECT	

NOTE

1.Do not scale from this drawing.  
2.All dimensions to be checked on site by the contractor and such dimensions to be his responsibility.  
3.Report all drawing errors, omissions and discrepancies to the architect.  
4.This document may be issued in an uncontrolled CAD format to enable others to use it as background information to make alterations and/or additions. In that Instance the file will be accompanied by a PDF version. It is for those making such alterations and additions to ensure that they make use of current background information.  
AHMM Ltd accepts no liability for any such alterations or additions to the background information or arising out of changes to background information which occur prior to alterations or additions being made.



ALLFORD HALL MONAGHAN MORRIS					
ARCHITECTS Ltd MORELANDS, 5-23 OLD STREET LONDON EC1V 9HL TEL 020 7251 5261 FAX 020 7251 5123 WEB WWW.AHMM.CO.UK					
Job title ARTHUR STANLEY HOUSE					
drawing title / location PROPOSED GA ELEVATION NORTH ELEVATION					
drawn by LV	checked GH	scale 1:100@A1; 1:200@A3	status PLANNING		
project 15068	zone	source	classification	drawing no.	revision
				(00)_P203	