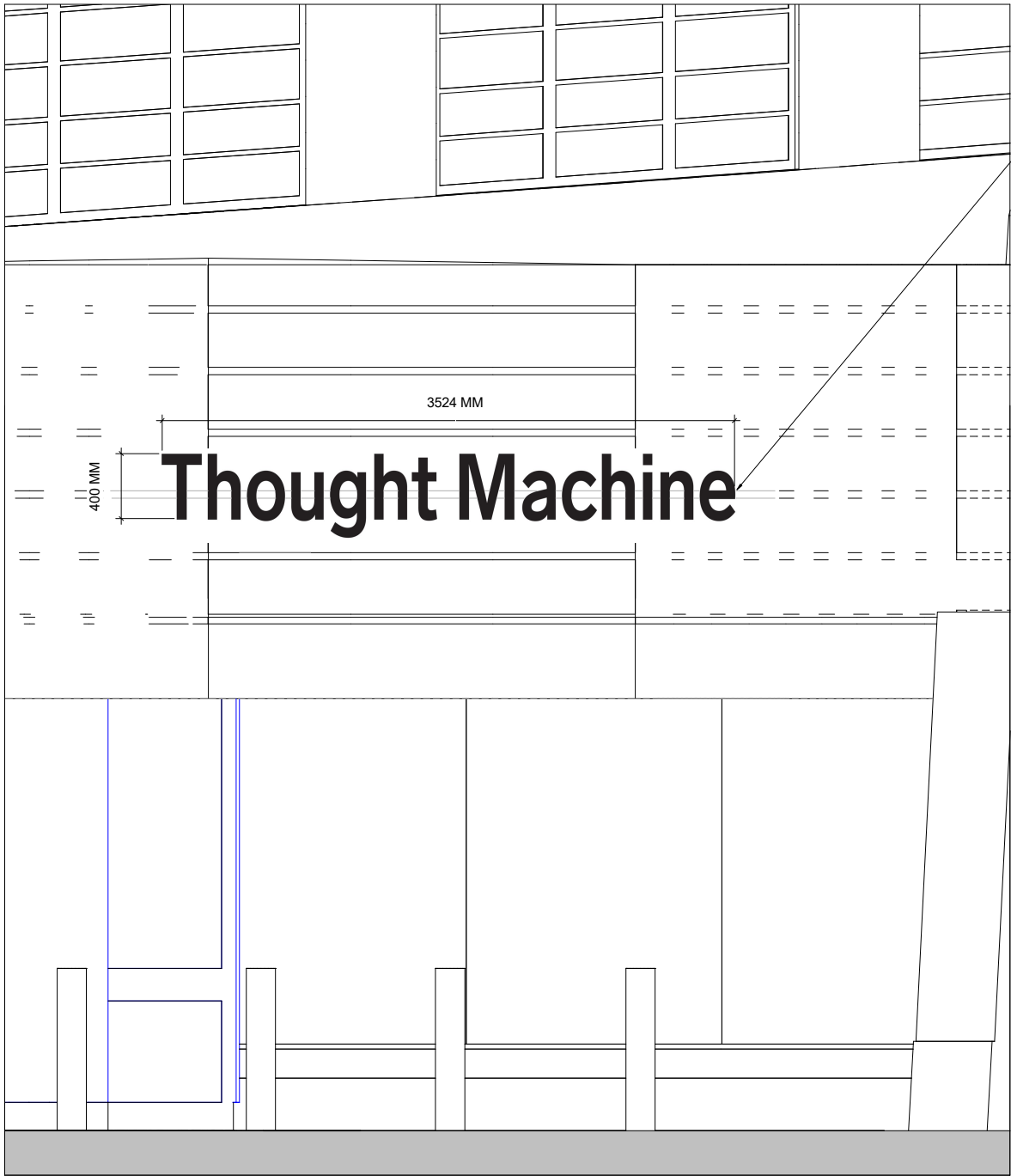
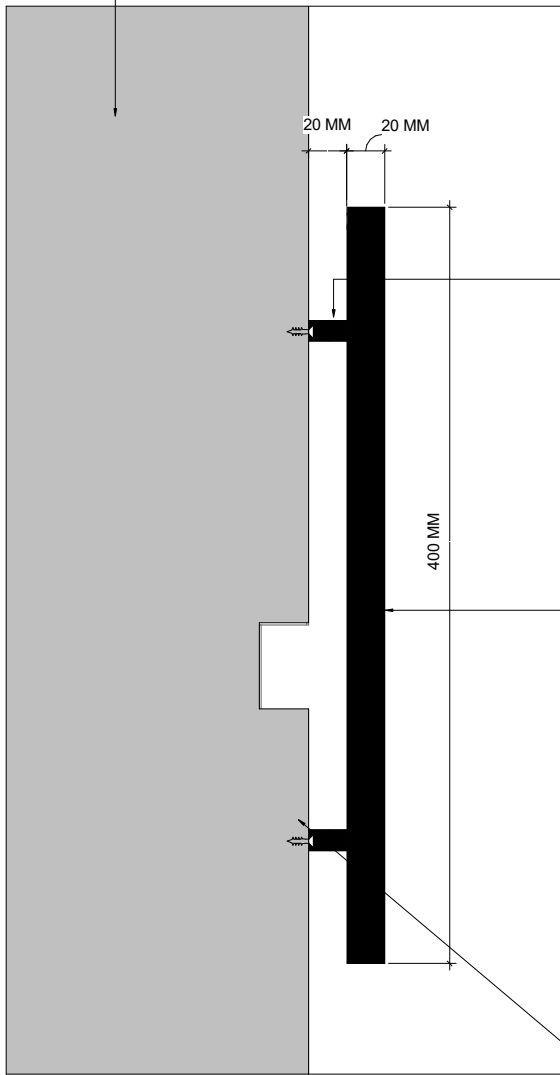


REVISION SCHEDULE			
REV	REVISION DETAILS	DATE	DRAWN BY
P1	DRAFT FOR REVIEW AND COMMENT	12.08.21	DMA
P2	UPDATED FOLLOWING COMMENTS AND CONSULTANTS INFORMATION RECEIVED	16.08.21	DMA
P3	UPDATED FOLLOWING MEETING 19.08.21 COMMENTS	25.08.21	DMA
P4	REVISED FOLLOWING DPR COMMENTS 31.08.21	31.08.21	DMA
P5	PLANNING SUBMISSION	07.09.21	DMA



NON ILLUMINATED OR PROJECTED, STAINLESS STEEL LETTERS WITH BLACK POWDER COATED FINISH TO FOLLOW THE CURVATURE OF THE FACADE. DIMENSIONS 3524 x 400 MM.

EXISTING RENDER FACADE



BLACK POWDER COATED BRASS LOCATORS

BLACK POWDER COATED STAINLESS STEEL LETTERS



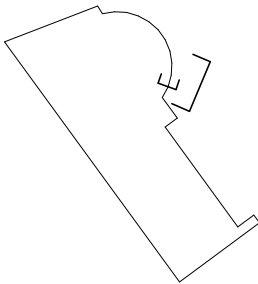
SAMPLE IMAGE OF STAINLESS STEEL LETTERS



SAMPLE IMAGE OF BRASS LOCATORS

1 PROPOSED ELEVATION - SIGNAGE DETAIL  
ELEVATION 1:20

2 PROPOSED SECTION - SIGNAGE DETAIL  
1:2



SIGN TO BE FIXED WITH BLACK POWDER COATED BRASS LOCATORS. LETTERS WILL FLOAT APPROXIMATELY 20 MM FROM WALL. ONE SIDE OF THE BRASS LOCATOR WILL BE FIXED TO THE FACADE, THE OTHER FIXED TO THE REVERSE OF THE SIGN. THEY ARE FIXED TOGETHER BY TIGHTENING THE BOLT ON THE THREAD.

ORIGINATOR

DMA

TITLE

PROPOSED SIGNAGE DETAIL

PROJECT	PURPOSE OF ISSUE	STATUS	REVISION
LABS - LHB HERBRAND ST LONDON	FOR PLANNING	S2	P5
JOB NO.	SCALE	DRAWN	CHECKED
577	AS SHOWN	CS	DAS
PROJECT	ORIGINATOR	VOLUME	LEVEL
LHB	DMA	XX	ZZ
TYPE	ROLE	DOC NO	
DR	A	074000	