



GEA

### Ordinance Survey Plan

Published 1960 - 1971

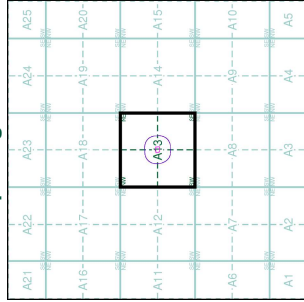
Source map scale - 1:1,250

The historical maps shown were reproduced from maps predominantly held at the Ordnance Survey office in Southampton, England, and Scotland in the 1940s, 1950s and 1960s. The maps were scanned and digitized by Ordnance Survey in 1996. The maps cover the whole of Great Britain and are the only maps of Great Britain published since 1996. The published date given below is often some years later than the actual date of the survey. Before 1938, all OS maps were based on the Cassini Projection, with independent surveys of a single county or group of counties, giving rise to significant inaccuracies in outlying areas.

### Map Name(s) and Date(s)

TO2686SE	1971	1:1,250	TO2686SE	1966	1:1,250
TO2686SW	1971	1:1,250	TO2686NE	1966	1:1,250
TO2686NW	1971	1:1,250	TO2686SE	1966	1:1,250

### Historical Map - Segment A13



### Order Details

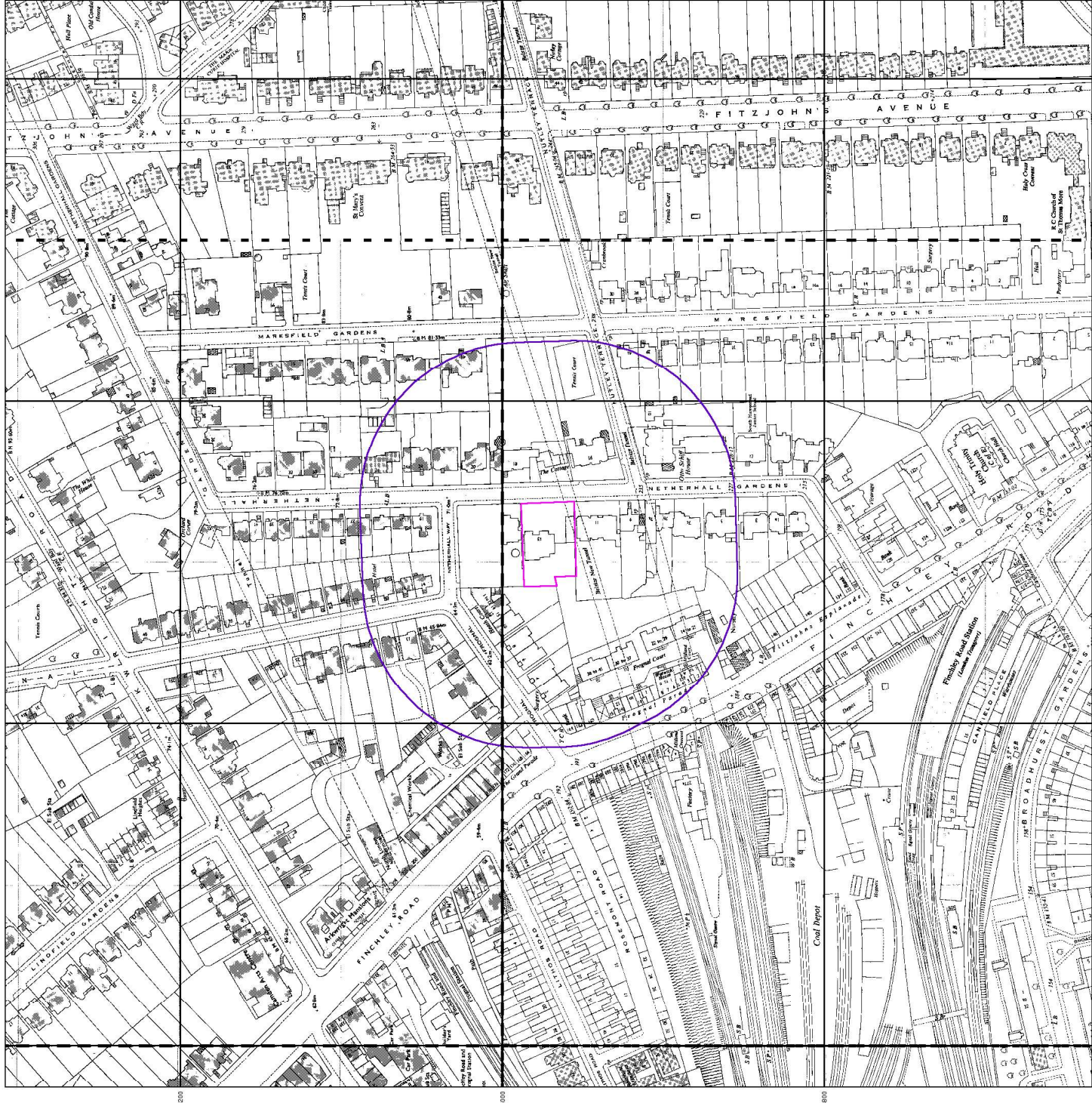
Order Number: 176294279\_1\_1  
 Customer Ref: J18176  
 National Grid Reference: 526310, 184970  
 Site: A  
 Site Area (Ha): 0.17  
 Search Buffer (m): 100

### Site Details

Flat 5, Elm Tree House, 13, Netherhall Gardens, LONDON, NW3 5RN



Tel: 0844 844 9552  
 Fax: 0844 844 9551  
 Web: www.envirocheck.co.uk





### Additional SIMs

Published 1960 - 1986

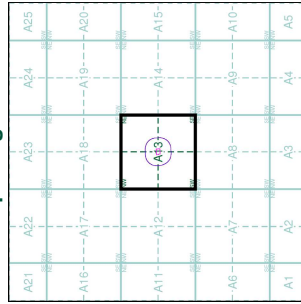
Source map scale - 1:1,250

The SIM cards (Ordnance Survey's 'Survey of Information on Microfilm') are minor editions of mapping which were produced and published between 1960 and 1986. The maps were produced between 1947 to 1984, and contain detailed information on buildings, roads, and land-use. These maps were produced at both 1:2,500 and 1:1,250 scales.

### Map Name(s) and Date(s)

TO268SE	1986	1:1,250
TO268NW	1976	1:1,250
TO268NE	1976	1:1,250
TO268SW	1976	1:1,250

### Historical Map - Segment A13



### Order Details

Order Number: 176294279\_1\_1  
 Customer Ref: J18176  
 National Grid Reference: 526310, 184970  
 Site: A  
 Site Area (Ha): 0.17  
 Search Buffer (m): 100

### Site Details

Flat 5, Elm Tree House, 13, Netherhall Gardens, LONDON, NW3 5RN



Tel: 0844 844 9552  
 Fax: 0844 844 9551  
 Web: www.envirocheck.co.uk



# Ordinance Survey Plan Published 1970

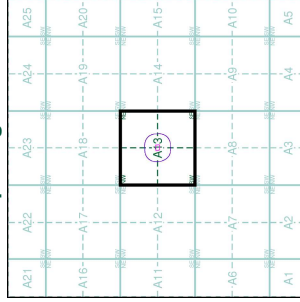
Source map scale - 1:2,500

The historical maps shown were reproduced from maps predominantly held at the Ordnance Survey office in Southampton. The maps were first published in 1840, 1854 and 1864 for England, Wales and Scotland in the 1:2,500 scale. The maps were then reissued in 1970 for the whole of Great Britain. The published date given below is often some years later than the surveyed date. Before 1838, all OS maps were based on the Cassini Projection, with independent surveys of a single county or group of counties, giving rise to significant inaccuracies in outlying areas.

## Map Name(s) and Date(s)

TO 9685	1970
1:2,500	

## Historical Map - Segment A13



## Order Details

Order Number: 176294279\_1\_1  
 Customer Ref: J18176  
 National Grid Reference: 526310, 184970  
 Slice: A  
 Site Area (Ha): 0.17  
 Search Buffer (m): 100

## Site Details

Flat 5, Elm Tree House, 13, Netherhall Gardens, LONDON,  
 NW3 5RN



Tel: 0844 844 9552  
 Fax: 0844 844 9551  
 Web: www.envirocheck.co.uk



GEA

### Ordinance Survey Plan

Published 1971 - 1981

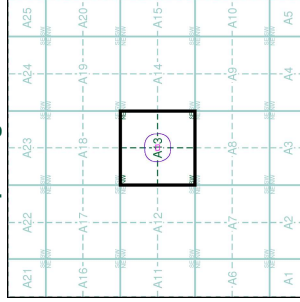
Source map scale - 1:1,250

The historical maps shown were reproduced from maps predominantly held at the Ordnance Survey office in Southampton, England, and Scotland in the 1940s, 1950s and 1960s. The maps were digitised and published by Ordnance Survey in 1971 and 1981. The published date given below is often several years later than the surveyed date. Before 1938, all OS maps were based on the Cassini Projection, with independent surveys of a single county or group of counties, giving rise to significant inaccuracies in outlying areas.

### Map Name(s) and Date(s)

TO2686SE	1981	1:1,250
TO2686SW	1979	1:1,250
TO2686SE	1979	1:1,250
TO2686NE	1979	1:1,250
TO2686NW	1979	1:1,250

### Historical Map - Segment A13



### Order Details

Order Number: 176294279\_1\_1  
 Customer Ref: J18176  
 National Grid Reference: 526310, 184970  
 Slice: A  
 Site Area (Ha): 0.17  
 Search Buffer (m): 100

### Site Details

Flat 5, Elm Tree House, 13, Netherhall Gardens, LONDON,  
 NW3 5RN



Tel: 0844 844 9552  
 Fax: 0844 844 9551  
 Web: www.envirocheck.co.uk



# Supply of Unpublished Survey Information

## Published 1973 - 1974

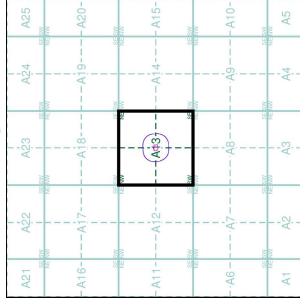
### Source map scale - 1:1,250

SUSI maps (Supply of Unpublished Survey Information) were produced between 1972 and 1977, mainly for internal use at Ordnance Survey. These were more of a 'work-in-progress' than as they show updates of individual plots in an area. These maps are produced at both 1:2,500 and 1:1,250 scales.

### Map Name(s) and Date(s)

TO2686SW	1973	1:1,250
TO2686SE	1974	1:1,250
TO2686NE	1973	1:1,250
TO2686NE	1974	1:1,250

### Historical Map - Segment A13



### Order Details

Order Number: 176294279\_1\_1  
 Customer Ref: J18176  
 National Grid Reference: 526310, 184970  
 Slice: A  
 Site Area (Ha): 0.17  
 Search Buffer (m): 100

### Site Details

Flat 5, Elm Tree House, 13, Netherhall Gardens, LONDON, NW3 5RN



Tel: 0844 844 9552  
 Fax: 0844 844 9551  
 Web: www.envirocheck.co.uk



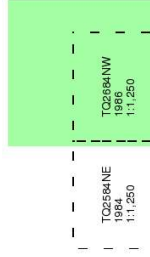
## Additional SIMs

Published 1984 - 1986

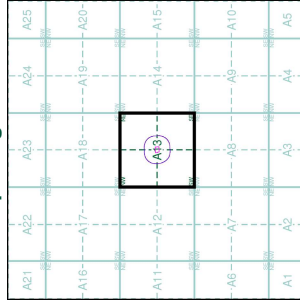
Source map scale - 1:1,250

The SIM cards (Ordnance Survey's 'Survey of Information on Microfilm') are further minor editions of mapping which were produced and published by Ordnance Survey between 1984 and 1986. The maps were first published in 1947 to 1984, and contain detailed information on buildings, roads and land-use. These maps were produced at both 1:2,500 and 1:1,250 scales.

## Map Name(s) and Date(s)



## Historical Map - Segment A13



## Order Details

Order Number: 176294279\_1\_1  
Customer Ref: J18176  
National Grid Reference: 526310, 184970  
Site: A  
Site Area (Ha): 0.17  
Search Buffer (m): 100

## Site Details

Flat 5, Elm Tree House, 13, Netherhall Gardens, LONDON, NW3 5RN



Tel: 0844 844 9852  
Fax: 0844 844 9851  
Web: www.envirocheck.co.uk



# Large-Scale National Grid Data Published 1991

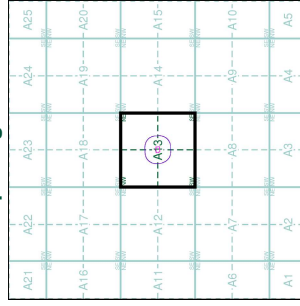
Source map scale - 1:1,250

Large Scale National Grid Data's superseded SLM cards (Ordnance Survey's Survey of Major Urban Areas) were first published in 1992, and continued to be produced until 1999. The maps were produced using aerial photography and provide detailed information on houses and roads, but lack topographic features such as vegetation. These maps were produced at both 1:2,500 and 1:1,250 scales.

## Map Name(s) and Date(s)

TC2686SE	1991	1:1,250	TC2686SW	1991	1:1,250
TC2686NE	1991	1:1,250	TC2686NW	1991	1:1,250

## Historical Map - Segment A13



## Order Details

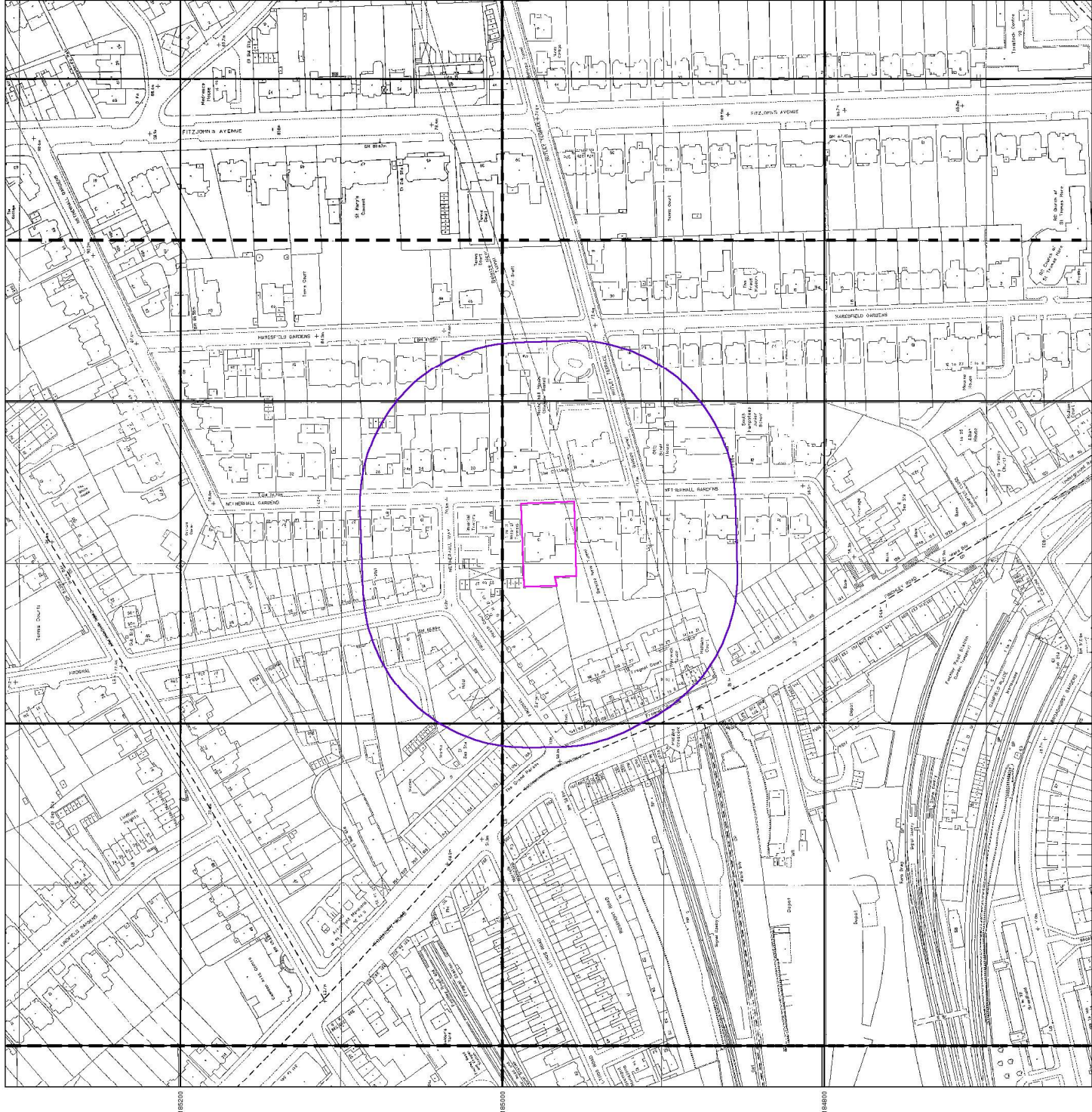
Order Number: 176294279\_1\_1  
 Customer Ref: J18176  
 National Grid Reference: 526310, 184970  
 Slice: A  
 Site Area (Ha): 0.17  
 Search Buffer (m): 100

## Site Details

Flat 5, Elm Tree House, 13, Netherhall Gardens, LONDON, NW3 5RN



Tel: 0844 844 9552  
 Fax: 0844 844 9551  
 Web: www.envirocheck.co.uk





GEA

### Large-Scale National Grid Data

Published 1992 - 1995

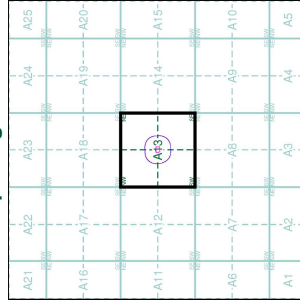
Source map scale - 1:1,250

Large Scale National Grid Data: superseded SLM cards (Ordnance Survey's Survey Information on Microfilm) in 1992, and continued to be produced until 1999. The maps are produced from digitising services which provide detailed information on houses and roads, but lack some topographic features such as vegetation. These maps were produced at both 1:2,500 and 1:1,250 scales.

### Map Name(s) and Date(s)

TC02685SE	1995	1:1,250
TC02685SW	1992	1:1,250
TC02694NE	1995	1:1,250
TC02694NW	1992	1:1,250

### Historical Map - Segment A13



### Order Details

Order Number: 176294279\_1\_1  
 Customer Ref: J18176  
 National Grid Reference: 526310, 184970  
 Slice: A  
 Site Area (Ha): 0.17  
 Search Buffer (m): 100

### Site Details

Flat 5, Elm Tree House, 13, Netherhall Gardens, LONDON, NW3 5RN



Tel: 0844 844 952  
 Fax: 0844 844 951  
 Web: www.envirocheck.co.uk







## Large-Scale National Grid Data

Published 1994 - 1995

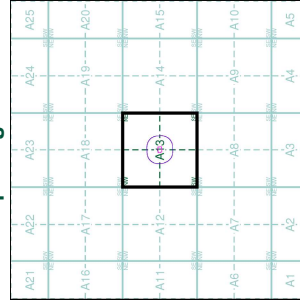
Source map scale - 1:1,250

Large Scale National Grid Data's superseded SIM cards (Ordnance Survey's Survey Information on Microfilm) in 1992, and continued to be produced until 1999. The maps are produced from digital mapping services provide detailed information on houses and roads, but lack some topographic features such as vegetation. These maps were produced at both 1:2,500 and 1:1,250 scales.

### Map Name(s) and Date(s)

TO2685SW	1995	1:1,250
TO2584NE	1995	1:1,250

### Historical Map - Segment A13



### Order Details

Order Number: 176294279\_1\_1  
Customer Ref: J18176  
National Grid Reference: 526310, 184970  
Slice: A  
Site Area (Ha): 0.17  
Search Buffer (m): 100

### Site Details

Flat 5, Elm Tree House, 13, Netherhall Gardens, LONDON, NW3 5RN



Tel: 0844 844 9952  
Fax: 0844 844 9951  
Web: www.envirocheck.co.uk

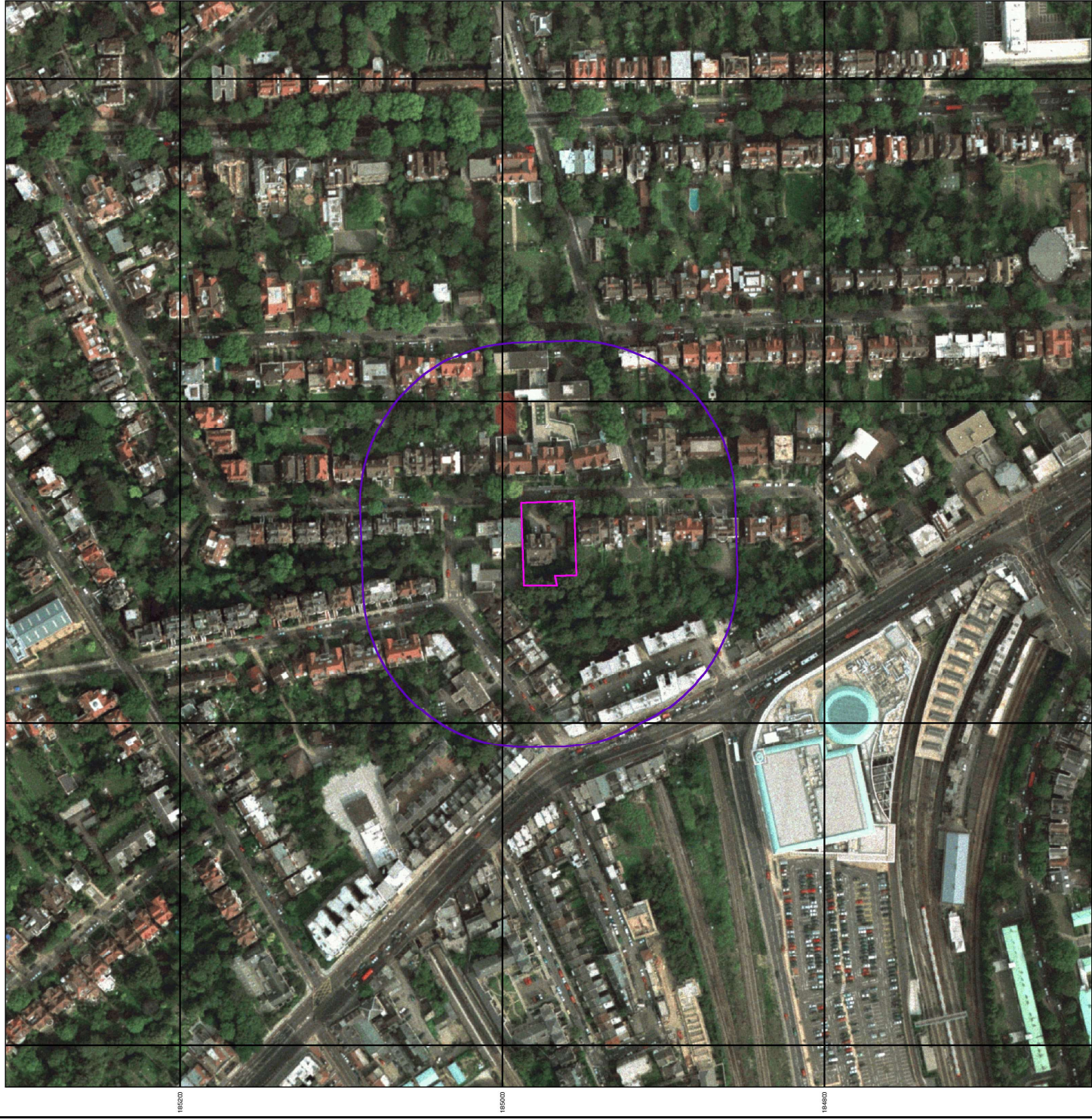


GEA

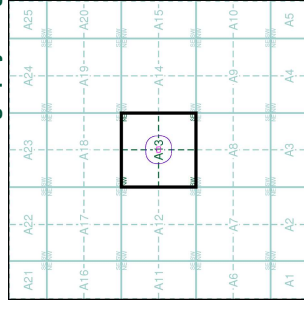
### Historical Aerial Photography

Published 1999

This aerial photography was produced by Geinmapping, these vertical aerial photographs provide a seamless, full colour survey of the whole of Great Britain



### Historical Aerial Photography - Segment A13



### Order Details

Order Number: 176294279\_1\_1  
 Customer Ref: J18176  
 National Grid Reference: 526310, 184970  
 Slice: A  
 Site Area (Ha): 0.17  
 Search Buffer (m): 100

### Site Details

Flat 5, Elm Tree House, 13, Netherhall Gardens, LONDON,  
 NW3 5RN



Tel: 0844 844 9552  
 Fax: 0844 844 9551  
 Web: www.envirocheck.co.uk