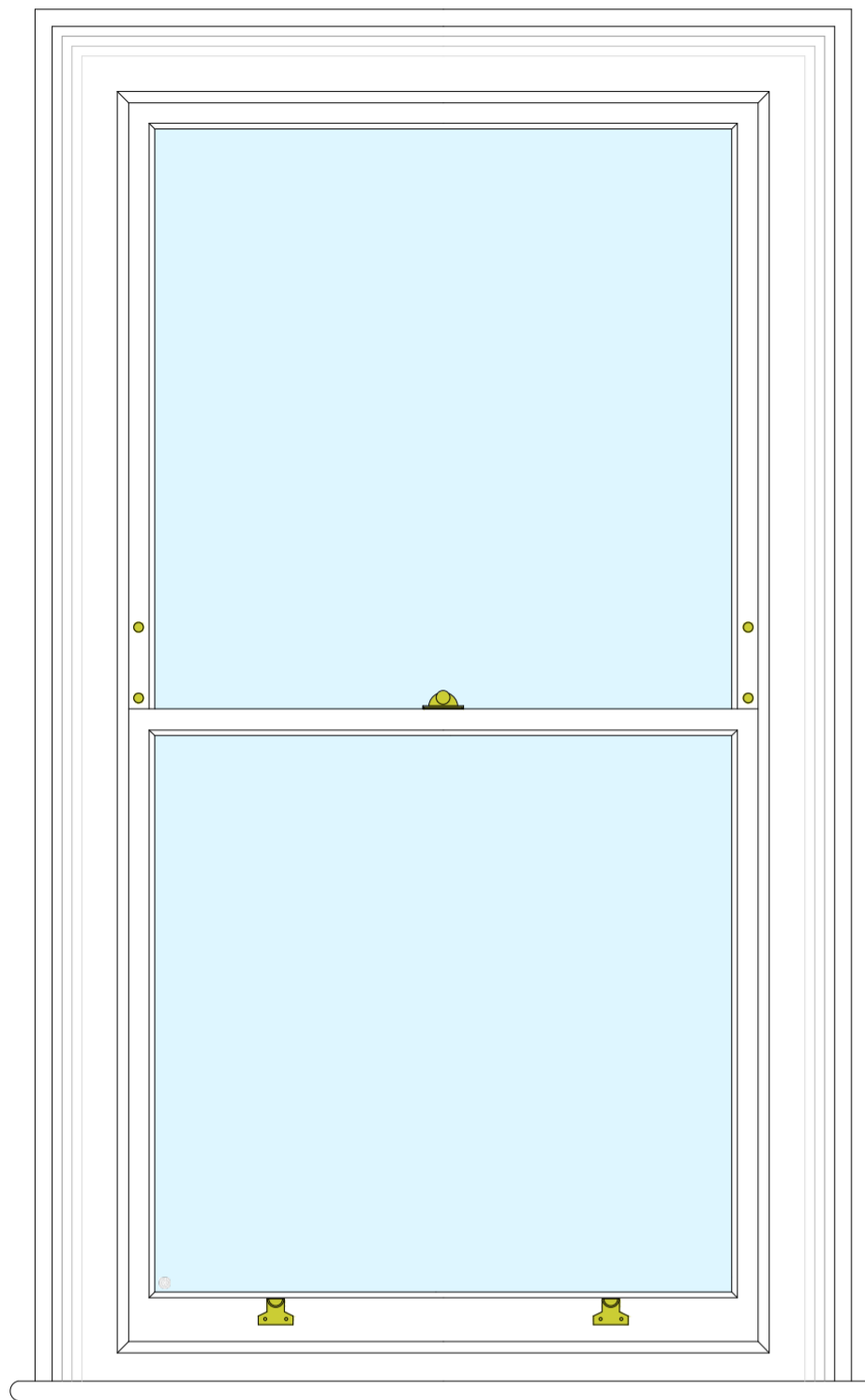
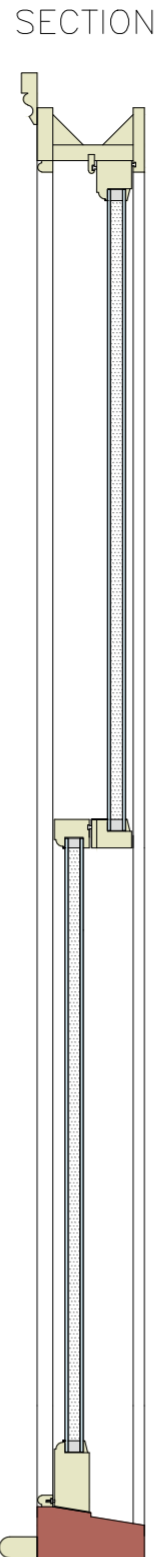


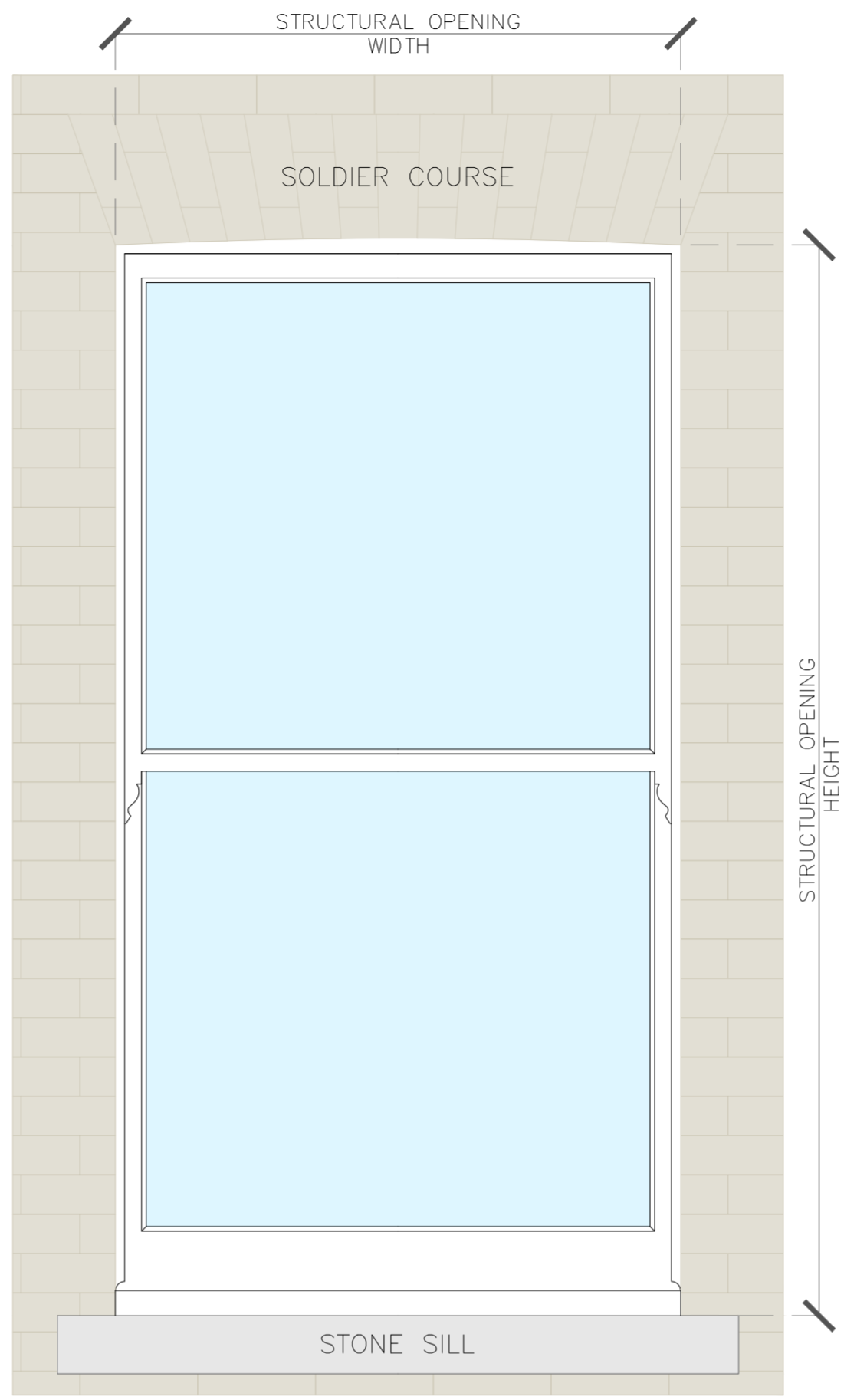
STANDARD DOUBLE GLAZED SASH WINDOW  
SCALE 1:10



INTERNAL ELEVATION

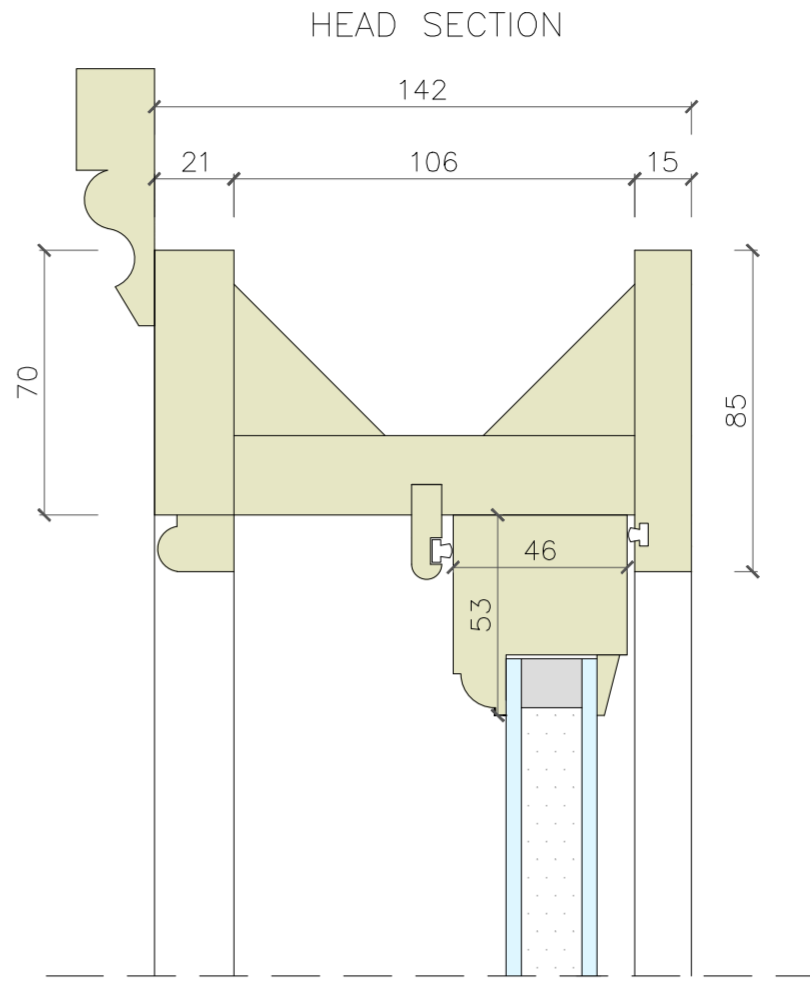


SECTION

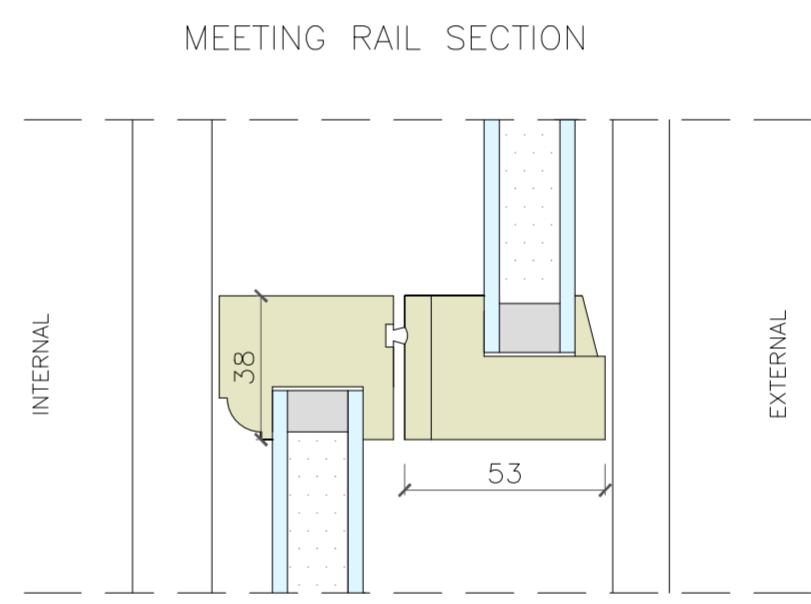


EXTERNAL ELEVATION

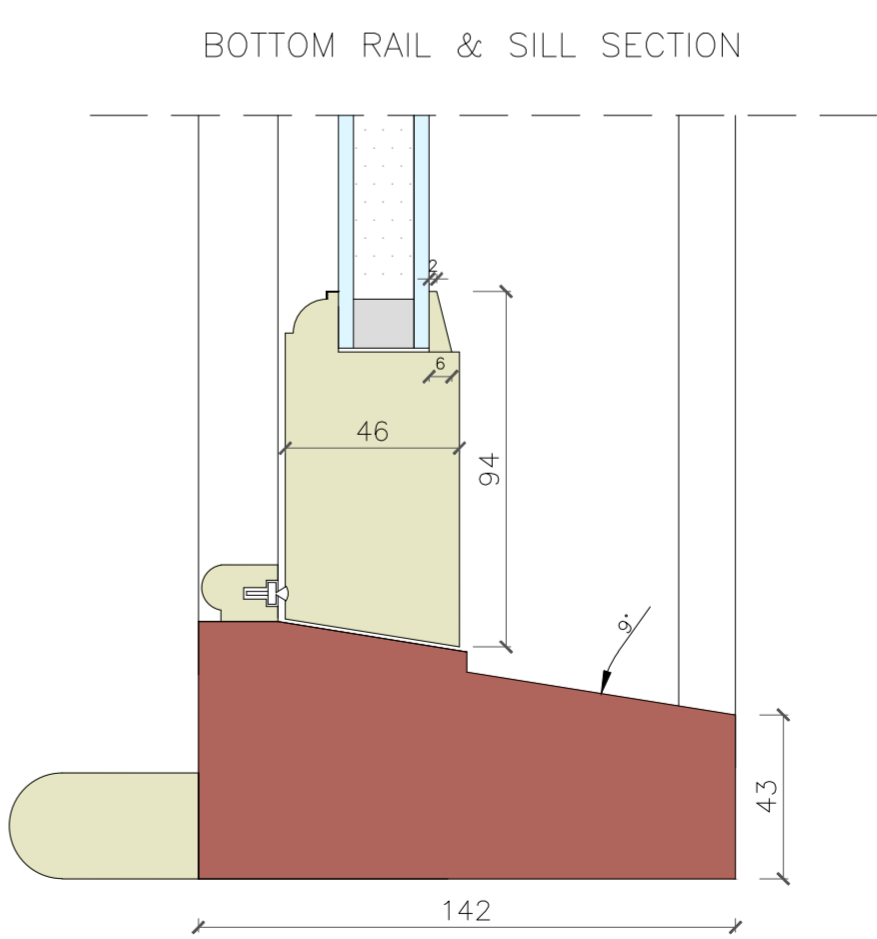
DETAIL  
SCALE 1:2



HEAD SECTION



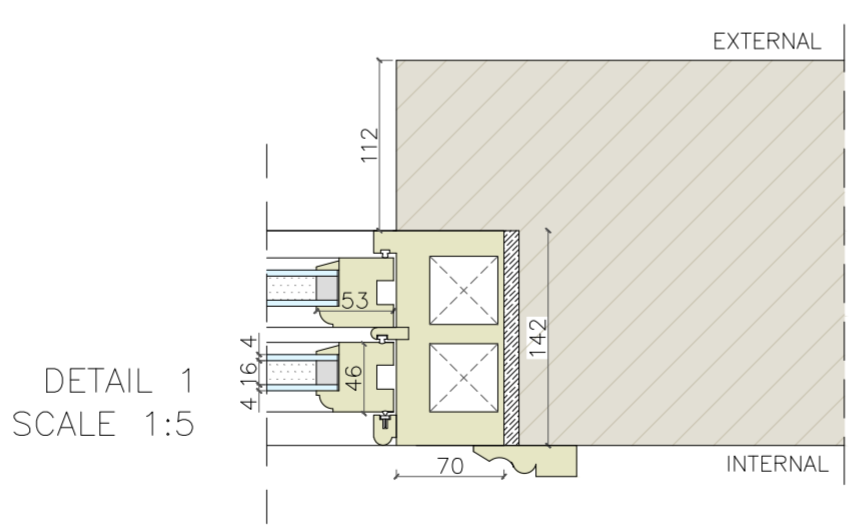
MEETING RAIL SECTION



BOTTOM RAIL & SILL SECTION



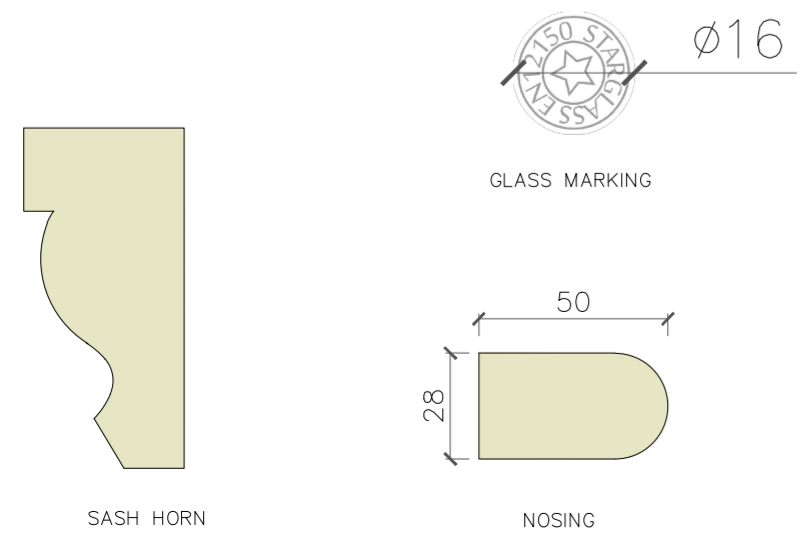
PLAN VIEW



DETAIL 1  
SCALE 1:5

DETAIL  
SCALE 1:2

SCALE 1:1



Tel: 020 8017 1632  
info@londonsash.com  
The London Sash Window Company  
41 High Street, London SE20 7HJ

DO NOT SCALE THIS DRAWING. USE FIGURE DIMENSIONS

NOTES:

- A) Timber: Scandinavian redwood (softwood).
- B) 4mm Low-e glass to internal pane.  
16mm warm edge spacer bar. argon filled.  
4mm clear float glass to external pane.
- C) All glass panels below 800mm from the Finished Floor Level (FFL) to be fitted with safety glass.  
Either Toughened Safety Glass or Laminate glass.  
Small marking to be shown on bottom corner of glass pane
- D) Paint Colour: RAL 9016.  
Eggshell finish (inside & out)
- E) Internal "OVOLO" mould.
- F) Bottom rail - 94mm.
- G) Meeting rail - 38mm.
- H) Top rail - 53mm.
- I) Inside Head - 70mm.
- J) Hardwood sill - 68 x 142mm.
- K) Staff bead - 15mm x 20mm.
- L) Parting bead - 7mm x 25mm.
- M) Draught exclusion weather seal.
- N) 3" Ogee Architrave .
- O) Bull nosing - 28mm x 50mm.
- P) Brighton fastener
- Q) Sash lifts
- R) Rola lock - Key operated

CLIENT:	N/A
LOCATION:	N/A
SCALE:	Drawing scale @A2
DRAWN BY:	TB
DATE	14 January 2021
DRAWING TITLE:	Standard DG
DRAWING NUMBER:	1
PURPOSE OF ISSUE:	For Information
QUANTITY:	N/A
REVISION:	N/A