

NEW PROPOSED HERITAGE STYLE DOUBLE GLAZED WINDOWS TO EXACTLY MATCH THE PROPORTIONS OF THE EXISTING TIMBER SASH BAY WINDOWS

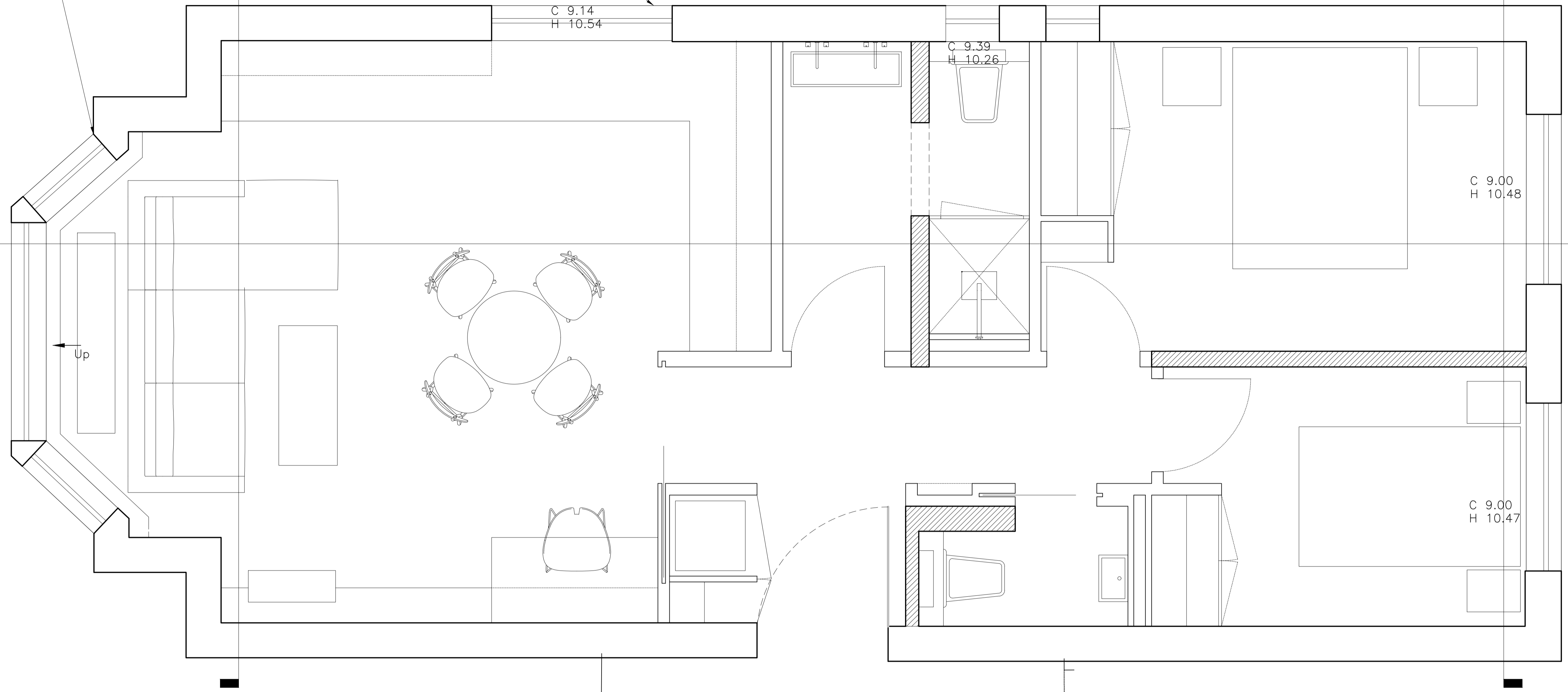
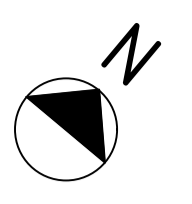
THE NEW PROPOSED SIDE WINDOW REPLACES A NON-ORIGINAL SINGLE GLAZED CRITTAL-TYPE WINDOW WITH A DOUBLE GLAZED WINDOW THAT RELATES TO THE PROPORTION OF THE ORIGINAL BAY WINDOWS ON THE MAIN FRONT ELEVATION

THE NEW PROPOSED SIDE WINDOW REPLACES A NON-ORIGINAL SINGLE GLAZED CRITTAL-TYPE WINDOW WITH A DOUBLE GLAZED WINDOW THAT RELATES TO THE PROPORTION OF THE ORIGINAL BAY WINDOWS ON THE MAIN FRONT ELEVATION

CC  
201

AA  
200

BB  
200



**ORIGINATE**

PHASE <b>PLANNING</b>	PROJECT TITLE <b>FLAT 2, 82 BELSIZE PARK GARDENS, LONDON, NW3 4NG</b>	DRAWING TITLE <b>PROPOSED GROUND FLOOR GENERAL ARRANGEMENT PLAN</b>	NO. DATE ISSUE/REVISION A 09/09/21 ISSUED FOR PLANNING	SCALE 1:20 @ A1 1:40 @ A3	DATE 15.07.21	DRAWING NO. <b>P100</b>	REVISION <b>A</b>
				DRAWN BY DS	PROJECT NO. 1269		