

10m
4
2
0m
SCALE BAR 1:100

Design Intention - Notes

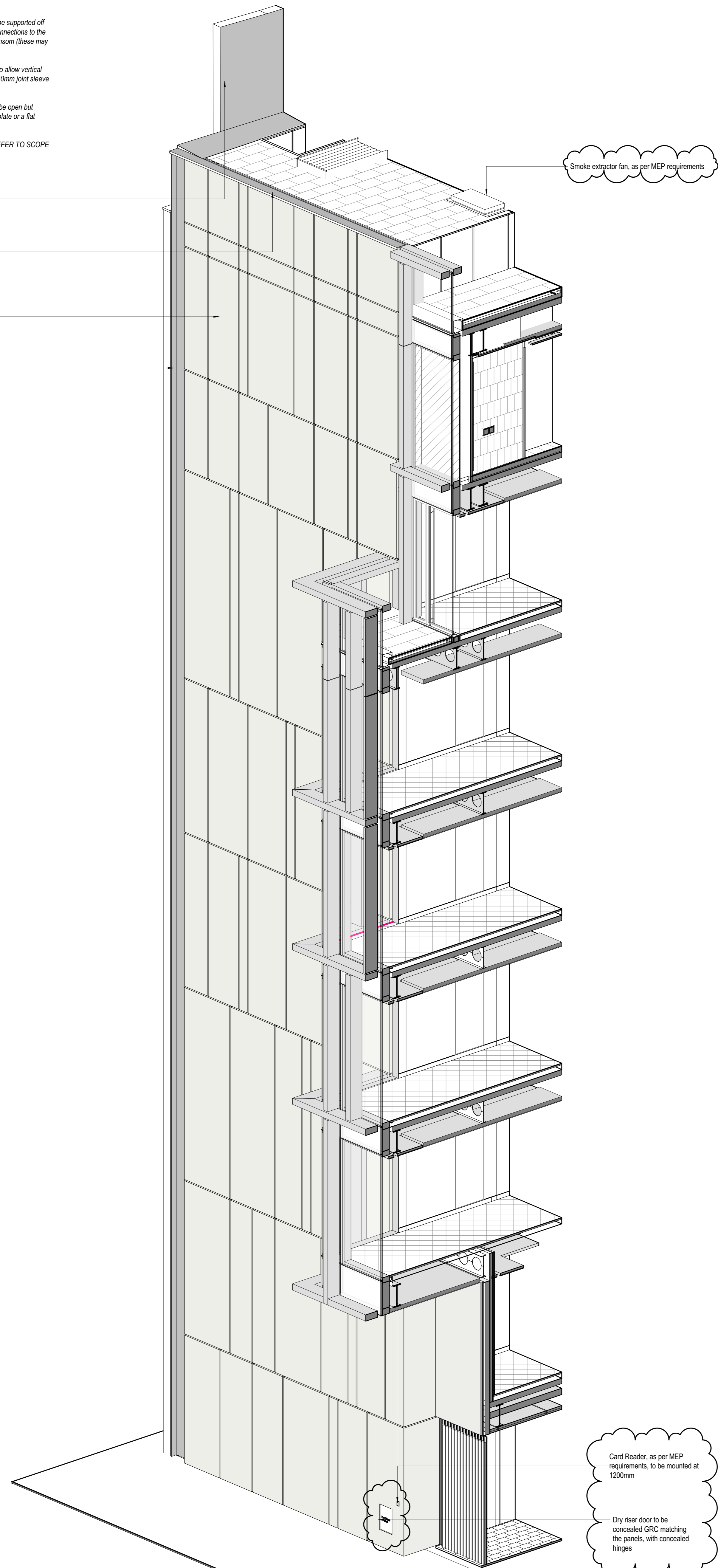
- The intention is to support the GRC fins through the coupling mullion joint with fin plates.
- Unitized panels are to be typically 3m wide
- The fins are hung adjacent to the main unitized pane fixings therefore transferring the load back to the structure.
- The large / heavy GRC fins are supported through the vertical joints therefore the unitized panel modules widths can vary and the vertical joints off set as required to give a random fin pattern. (See below shows potential division)
- Only the small fins can be fitted mid pane. These will be supported off the horizontal fin. The horizontal fin is supported by connections to the vertical fins and where required fixings through the transom (these may be required at the small mid pane fin locations)
- The upper vertical fin 30mm joint has a sliding saddle to allow vertical movement relative to the horizontal fin and a dummy 30mm joint sleeve will be on vertical fin.
- At the location of the horizontal fin fixing the GRC will be open but between the fixings the back can be closed off with a plate or a flat section of GRC.
- FOR FURTHER DETAILS ON THE EWS TYPES - REFER TO SCOPE DRAWINGS AND SPECIFICATIONS

Fox Court Wall

PPC profile color RAL to match GRC panel

EWS - 165 GRC Panel Rainscreen Cladding to Core

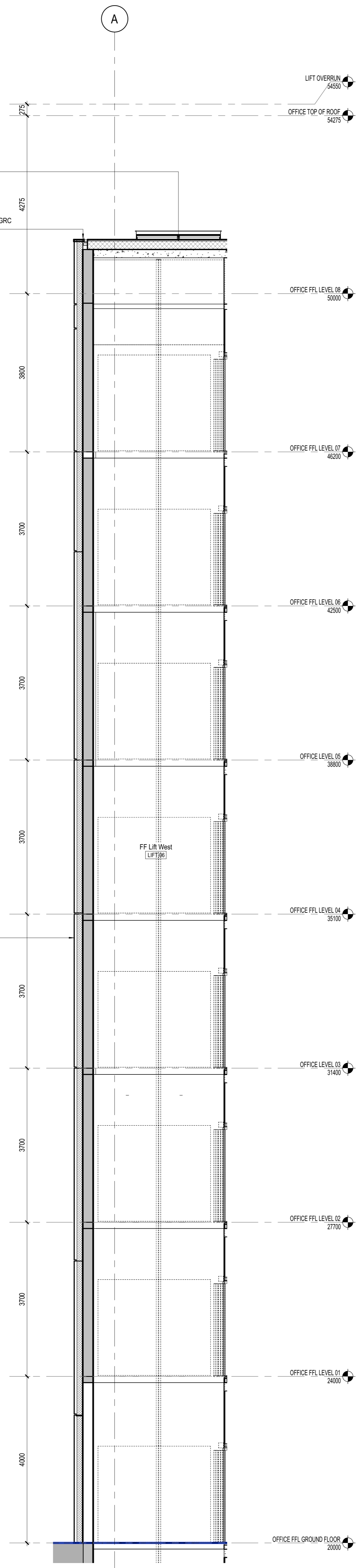
Aluminum U shape profile for West Core Party Wall cavity, size to be confirmed upon GRC installation, on site



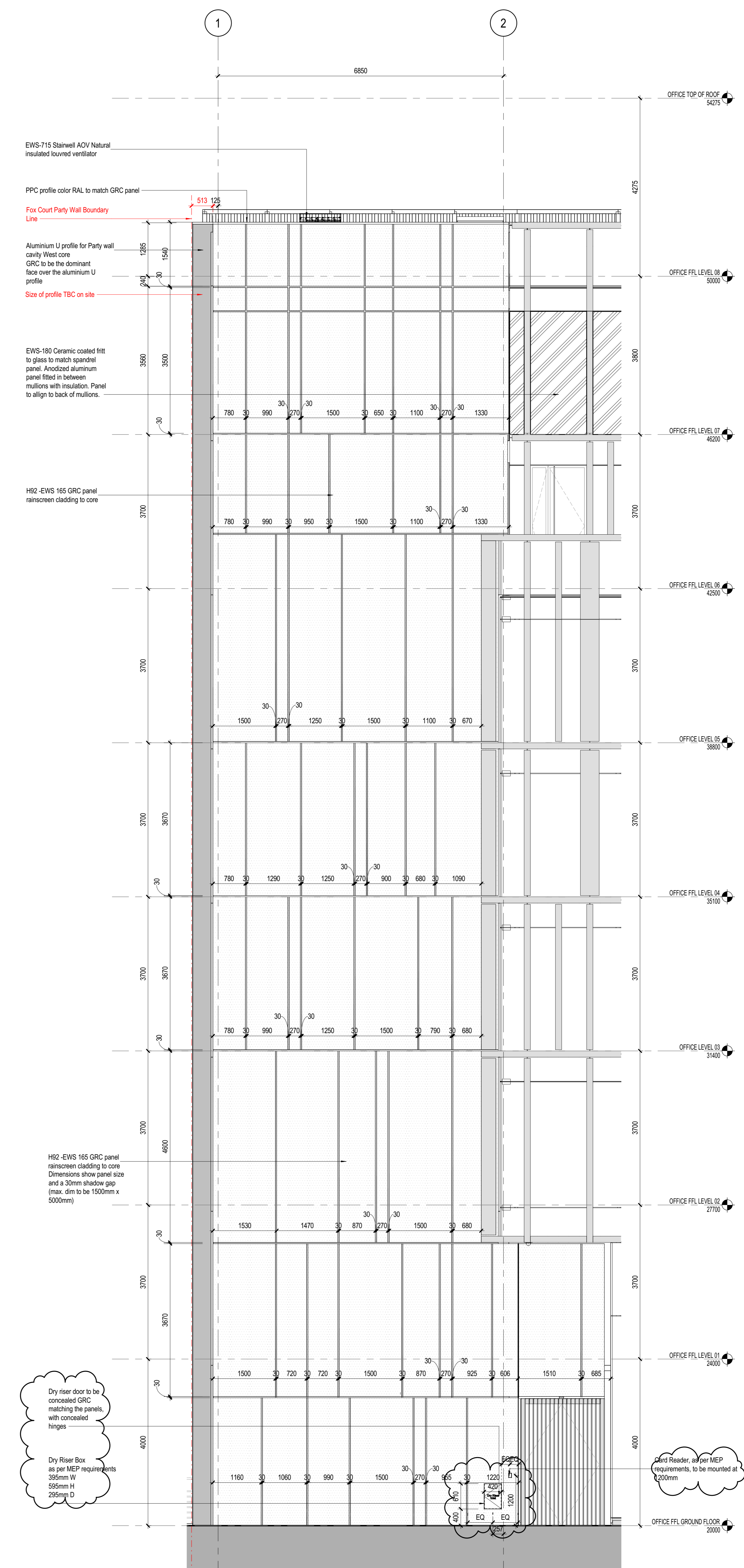
Smoke extractor fan, as per MEP requirements

Card Reader, as per MEP requirements, to be mounted at 1200mm

Dry riser door to be concealed GRC matching the panels, with concealed hinges



2 Enlarged Section - West Core (West Side)
1:50



Dry riser door to be concealed GRC matching the panels, with concealed hinges

Dry Riser Box as per MEP requirements 395mm W 595mm H 295mm D

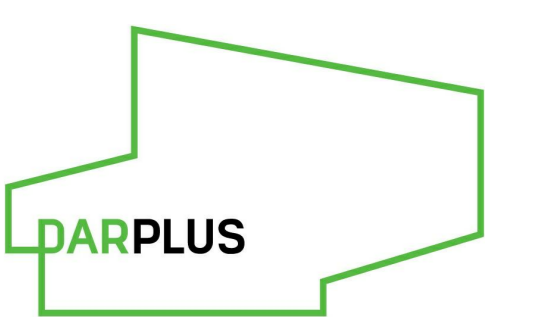
Card Reader, as per MEP requirements, to be mounted at 1200mm

1 Enlarged Elevation - West Core (West Elevation)
1:50 Referencing View: 2/ A1203

NOTES
This drawing is the property of Perkins+Will UK Ltd. No disclosure or copy of it may be made without the written permission of Perkins+Will UK Ltd.
All information, areas, dimensions and datum levels are subject to detailed survey, detailed design and investigative work. Do not scale from the drawing.

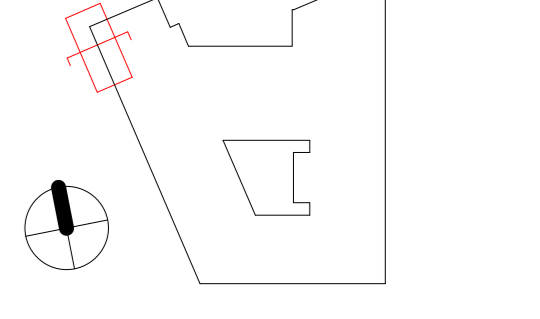
NOTE: DOCUMENTS ARE INCOMPLETE AND MAY NOT BE USED FOR REGULATORY APPROVAL, PERMITTING, OR CONSTRUCTION PURPOSES.

PROJECT
150 Holborn



DAR
WIGMORE STREET
LONDON W1

KEYPLAN



ISSUE CHART

CD1	STAGE 05	20200521
CD6	STAGE 05	20200408
CD5	STAGE 05	20200325
CD4	STAGE 05	20200203
CD3	STAGE 05	20190818
CD2	STAGE 05	20190517
CD1	STAGE 05	20190322
PL 11	STAGE 04	20190227
WAK	BLDG	DATE

Date: 07/27/18
Job Number: 325424
Scale: 1:50
Drawn: Author
Checked: Checker
Approved: Approver

CDE STATUS
STAGE 05 - FOR CONSTRUCTION

TITLE
West Core Facade Systems - West Side Cladding

SHEET NUMBER

150 PWA Z1 XX DR A 3107

CDE STATUS CODE: A2
REVISION: C07

BIM 360://150 Holborn Bldg-Development/150 PWA Z1 XX DR A 3107.rvt
21/02/2020 2:13:47