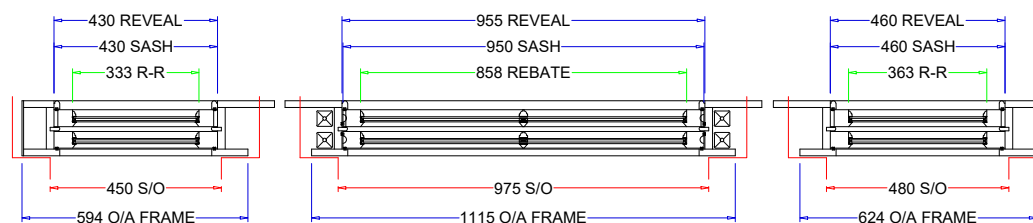
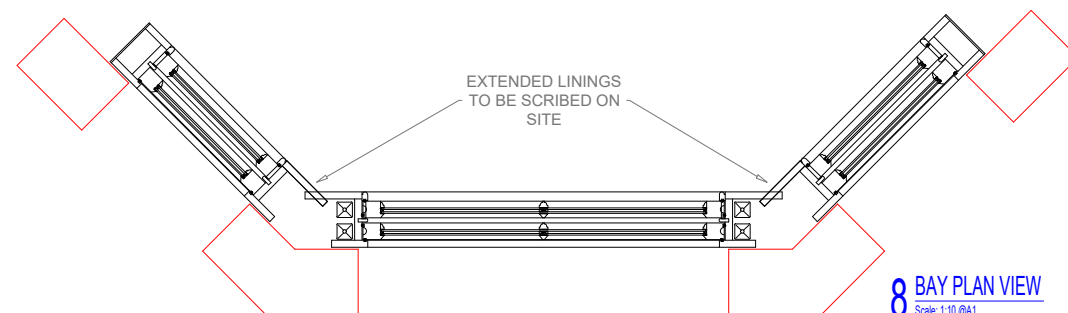
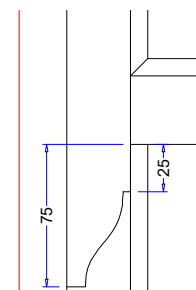
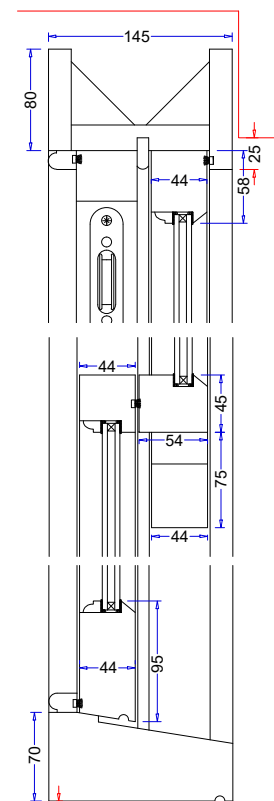
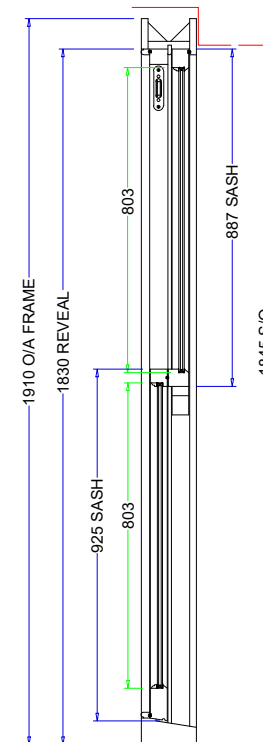
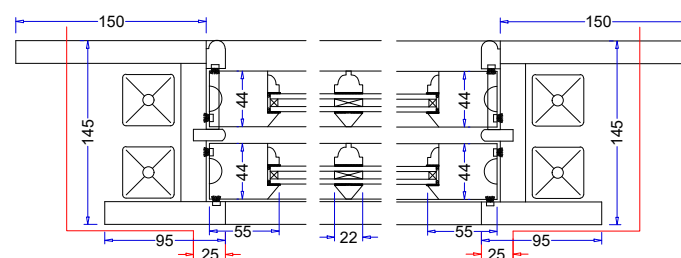
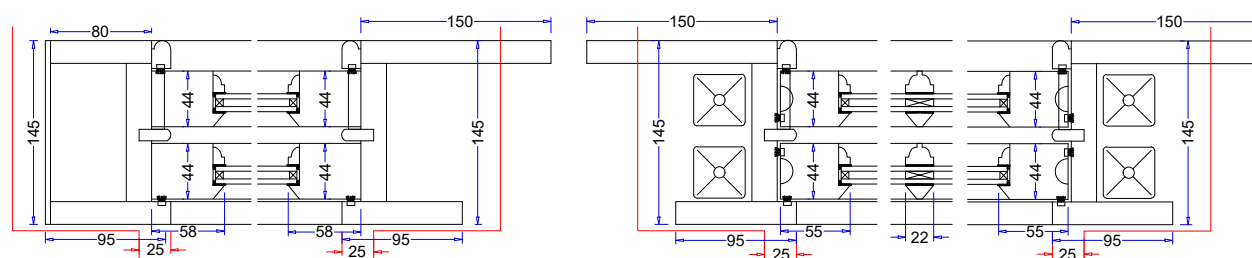


# 1 FRONT ELEVATION




\*OVERALL FRAME SIZE DOES NOT  
INCLUDE EXTENDED LINING\*



TO BE CONFIRMED:

- IRONMONGERY FINISH
- PAINT FINISH

DATE	REVISION & NOTES
	<ul style="list-style-type: none"><li>• TO SUPPLY AND INSTALL BOX SASH WINDOWS</li><li>• FRAMES TO BE MANUFACTURED OUT OF ENGINEERED SOFTWOOD WITH A HARDWOOD CILL</li><li>• SASHES TO BE MANUFACTURED OUT OF ENGINEERED SOFTWOOD</li><li>• DOUBLE GLAZED WITH 4mm OPTIWHITE / 6mm KRYPTON / 4mm PILKINGTON K GLASS<ul style="list-style-type: none"><li>- WHITE/BLACK/GREY TBC</li><li>- SPACER BARS</li><li>- TOUGHENED - WHERE ANNOTATED</li></ul></li><li>• WEIGHTS AND CORDS SUPPLIED LOOSE FOR FITTING ON SITE</li><li>• IRONMONGERY SUPPLIED AND FITTED<ul style="list-style-type: none"><li>- PULLEYS, RESTRICTORS FINGER PULLS &amp; FITCH FASTENERS</li><li>- FINISH TBC</li></ul></li><li>• FULLY FINISHED IN MICRO POROUS PAINT - RAL TBC</li></ul>
	<p>NOTES ON SIZES</p> <ul style="list-style-type: none"><li>• ALL DRAWINGS ARE FROM AN EXTERNAL POINT OF VIEW UNLESS OTHERWISE STATED</li><li>• THIS DRAWING IS SOLELY PREPARED FOR THE USE OF K&amp;D JOINERY IN PREPARATION OF THEIR WORK AND MUST NOT BE USED FOR ANY OTHER PURPOSE</li><li>• DOUBLE DOORS AND CASIMENTS WITHOUT A VERTICAL TRANSOM WILL ALLOW A TINY AMOUNT OF LIGHT LEAKAGE AT THE TOP AND BOTTOM OF THE DOORS &amp; SASHES</li><li>• CHECK THERE IS SUFFICIENT ACCESS THROUGH AROUND THE BUILDING SUITABLE FOR THE SIZE OF JOINERY INDICATED ON THIS DRAWING</li></ul> <p>NOTES ON FINISHING</p> <ul style="list-style-type: none"><li>• WE CANNOT GUARANTEE THE STABILITY OF ANY DOOR OVER 2200mm HIGH &amp; RECOMMEND ALL DOORS OVER 2200mm HIGH TO BE REINFORCED &amp; BUILT REINFORCED</li><li>• WOOD IS A NATURAL PRODUCT THAT RESPONDS TO TEMPERATURE AND HUMIDITY VARIATIONS BY EXPANDING AND CONTRACTING. MOVEMENT SHOULD BE EXPECTED DURING THE DIFFERENT SEASONS THROUGHOUT THE YEAR. K&amp;D JOINERY CANNOT BE HELD RESPONSIBLE FOR NATURAL MOVEMENT IN TIMBER AND ANY FUTURE ADJUSTMENTS FOLLOWING DELIVERY/INSTALLATION OF PRODUCTS WILL BE CHARGED FOR. IF YOU REQUIRE A COMPLETELY STABLE PRODUCT WITH NO MOVEMENT WE WOULD BE PLEASED TO USE ACCOYA TIMBER.</li><li>• K&amp;D JOINERY DO NOT RECOMMEND FINISHING EXTERNAL JOINERY IN BLACK OR A SIMILAR DARK COLOR AND CANNOT OFFER ANY GUARANTEES DUE TO THE TIMBER BECOMING MORE SUSCEPTIBLE TO MOVEMENT, TWISTING, WARPING, CRACKING DUE TO THE DARKER COLOR ABSORBING MORE HEAT</li><li>• ALL JOINERY WILL BE PRIMED WHITE UNLESS OTHERWISE SPECIFIED</li><li>• COLOR VARIATION CAN BE EXPECTED WHEN USING CLEAR STAINED FINISHES, ESPECIALLY WHEN THE JOINERY IS MADE OUT OF BORO AND OAK</li><li>• ALL CLEAR FINISHED EXTERIOR JOINERY SHOULD BE TREATED ON A YEARLY BASIS, FOLLOWING PROFESSIONAL GUIDELINES</li></ul> <p>NOTES ON VENTILATION</p> <ul style="list-style-type: none"><li>• PLEASE NOTE, THURCLE VENTS WILL NOT BE FITTED TO JOINERY UNLESS SPECIFIED BY THE CLIENT. WE CANNOT DETERMINE THE VENTILATION REQUIREMENTS</li></ul> <p>NOTES ON MOISTURE CONTENT</p> <ul style="list-style-type: none"><li>• THE MOISTURE CONTENT OF THE TIMBER TO BE USED WILL BE 10% + 3 (EXTERNAL)</li><li>• THE MOISTURE CONTENT OF THE TIMBER TO BE USED WILL BE 10% + 2 (INTERNAL)</li></ul> <p>NOTES FOR WORKSHOP</p> <ul style="list-style-type: none"><li>• ENQUIRY OR SEALER TO BE USED ON ALL EXPONED EDGES, INCLUDING THE ENDS OF BEADING</li></ul> <p>NOTES FOR SITE CARE AFTER DELIVERY</p> <ul style="list-style-type: none"><li>• APPROVAL OF THIS DRAWING CONFIRMS THAT YOU WILL REVIEW AND ADHERE TO THE SITE CARE INFORMATION SHEET ATTACHED WITH THIS DRAWING.</li></ul>
	<p><b>KEY:</b></p> <div><div></div> = SURVEY SIZES<div></div> = REBATE SIZES<div></div> = JOINERY SIZES<div></div> = DATUM SIZES</div> <p>READ IN CONJUNCTION WITH THE FOLLOWING DRAWINGS 1180-1182</p> <div><div>ISSUED FOR APPROVAL</div><div></div><div>Joinery House 69 Chequers Lane - Dagenham RM9 6QJ Tel: 020 8526 7020 - Fax: 020 8526 7031 Website: <a href="http://www.kandd.org">www.kandd.org</a> - E-mail: <a href="mailto:info@kandd.org">info@kandd.org</a></div></div>
CLIENT:	LEAH SCHABAS
PROJECT:	55 SPENCER RISE NW5 1AR
DESCRIPTION:	BAY WINDOWS
JOB Nö:	55060
DWG Nö:	1181
REV:	00
DWG BY:	LM
DATE:	01.07.21