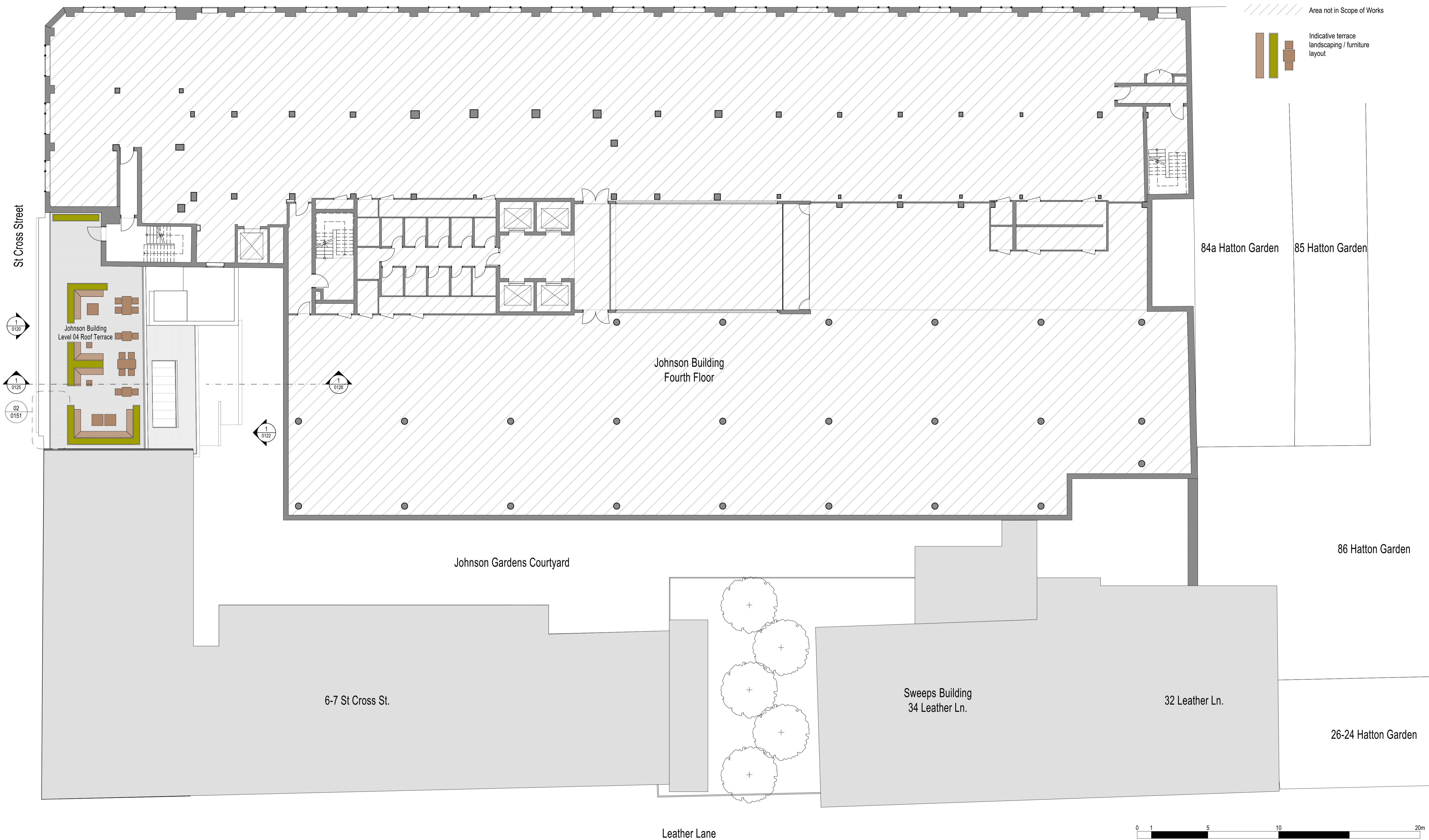


Hatton Garden

Key Plan



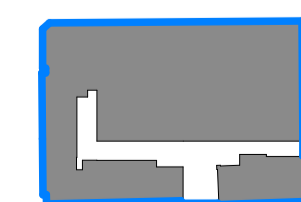
This document and its design content is © John Robertson Architects Ltd. It shall be read in conjunction with all other associated project information including models, specifications, schedules and related consultants documents. Do not scale from documents. All dimensions to be checked on site. Immediately report any discrepancies, errors or omissions on this document to the Originator. If in doubt ASK.

| Rev | Date | Dwn | Chk | Description |
|-----|------------|-----|-----|-----------------------|
| P01 | 20/08/2021 | AM | LM | Issue for Information |
| P02 | 27/08/2021 | AM | LM | Issue for Planning |

| Rev | Date | Dwn | Chk | Description |
|-----|------|-----|-----|-------------|
| | | | | |

| Rev | Date | Dwn | Chk | Description |
|-----|------|-----|-----|-------------|
| | | | | |

KEY PLAN / NORTH SYMBOL



[Building Plan]



JRA
John Robertson Architects
 111 Southwark Street,
 London, SE1 0JF
 02076335100
 www.jra.co.uk
 enquiries@jra.co.uk

Project
Johnson Gardens
 London

Client
Johnson Hatton Office Unit Trust
 11-15 Seaton Place St Heller
 Jersey JE4 0QH UK

Drawing Title
Johnson Building & 5 St Cross Street - Proposed Fourth Floor Plan

Scale: 1:125 @ A1 / 1:250 @ A3 Internal Project No. 1985

Dwg No. **1985-JRA-00-04-DR-A-0114**

Suitability FOR INFORMATION S2

Revision PRELIMINARY **P02**