

DF_V

Non-Verified camera matched Imagery - Methodology Statement

Apothecary House, Highgate

The purpose of this document is to specify the methodology used by DF_V in the production of the camera matched images for Apothecary House, Highgate. The images are NOT verified views care has been taken to provide the most accurate representation of the location and impact of the proposed development with the data that was provided to DF_V and available at that time.

Brief

A number of view locations were outlined along Highate West Hill and the private Access road to replicate what would be seen when looking towards the proposed development.

Photography

Photographs were taken by and provided by HGH Consulting. All photographs were taken at a natural eye height (around 1.6m) and at a neutral focal length of 26mm.

Survey

The survey data used provided in 2d form by Studio : 08

3D Model

DF_V created a 3d model of the site, development and surrounding context by using the survey and proposed drawings as provided by Studio : 08 and also aerial photography from Google and Bing.

Camera Matching

Virtual cameras are positioned within the 3d model by aligning the context, existing models and data with the photographs. The meta data from the photographs were used to match the virtual and real world cameras.

Lighting/Rendering

N/A As the proposed development was not visible from the views we did not replicate the lighting.

Montage/Post-Production

A red line outline was placed at the highest point of the proposed scheme.

DF_V Project Specific Method Statement

Photograph Register

Image Ref	Camera	Focal Length	Aperature	Shutter Speed	Orientation
View_01 - IMG-4846	Iphone 11 Pro Max 4.25mm f1.8	26mm	f1.8	1/280s	Landscape
View_02 - IMG-4845	Iphone 11 Pro Max 4.25mm f1.8	26mm	f1.8	1/280s	Landscape
View_03 - IMG-4842	Iphone 11 Pro Max 4.25mm f1.8	26mm	f1.8	1/280s	Landscape

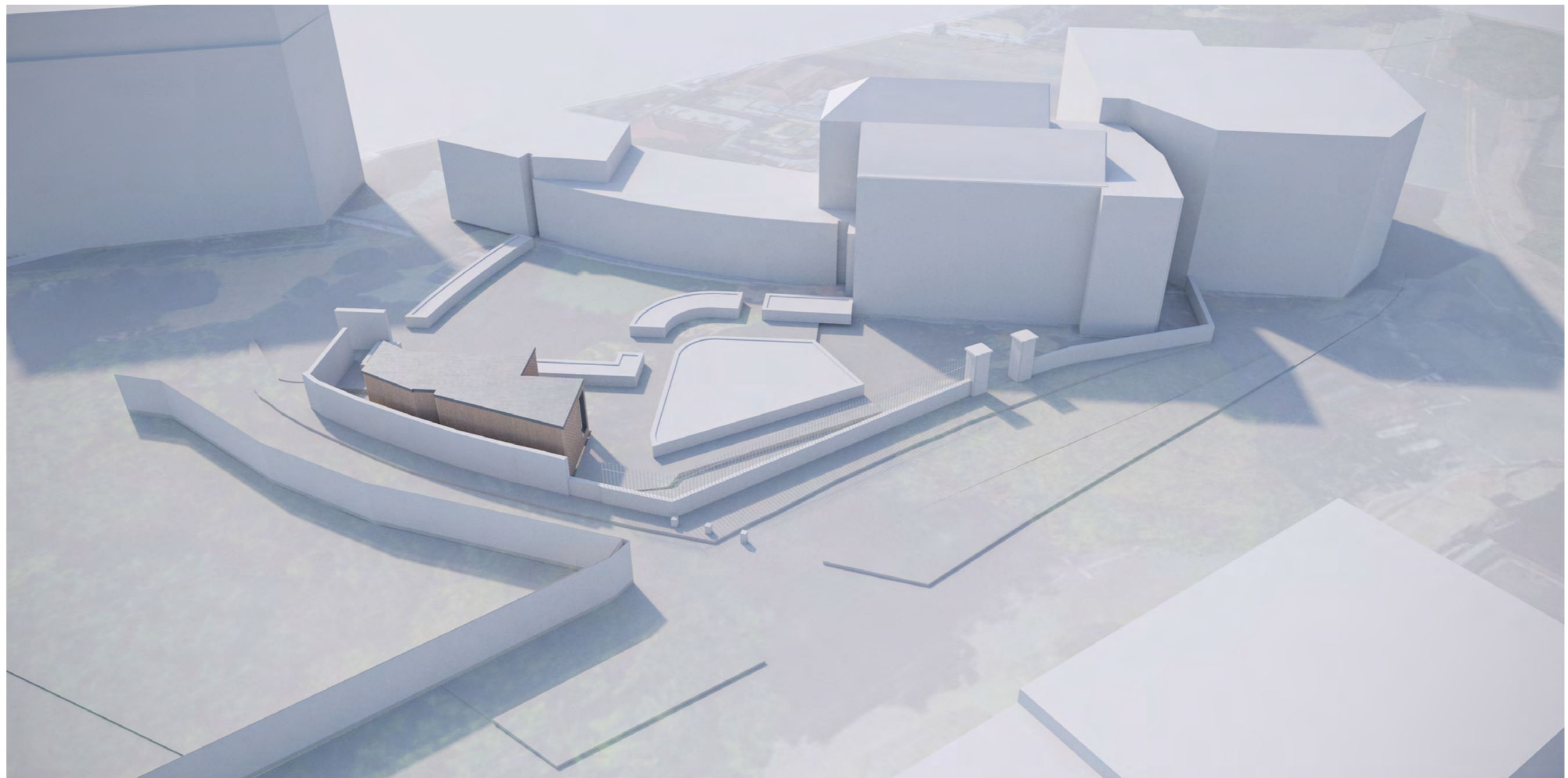


Image Ref	Camera	Focal Length	Aperature	Shutter Speed	Orientation
View_01 - IMG-4846	Iphone 11 Pro Max 4.25mm f1.8	26mm	f1.8	1/280s	Landscape





Apothecary House, Highgate

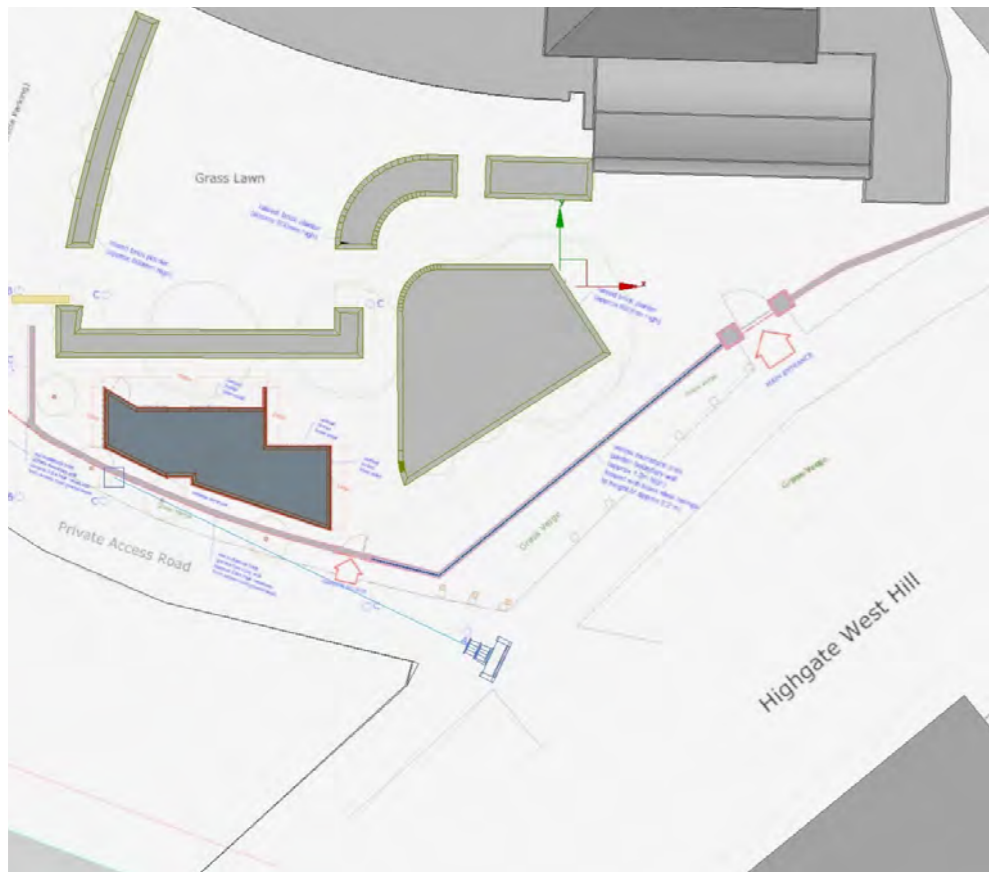
Image Ref	Camera	Focal Length	Aperature	Shutter Speed	Orientation
View_02 - IMG-4845	Iphone 11 Pro Max 4.25mm f1.8	26mm	f1.8	1/280s	Landscape

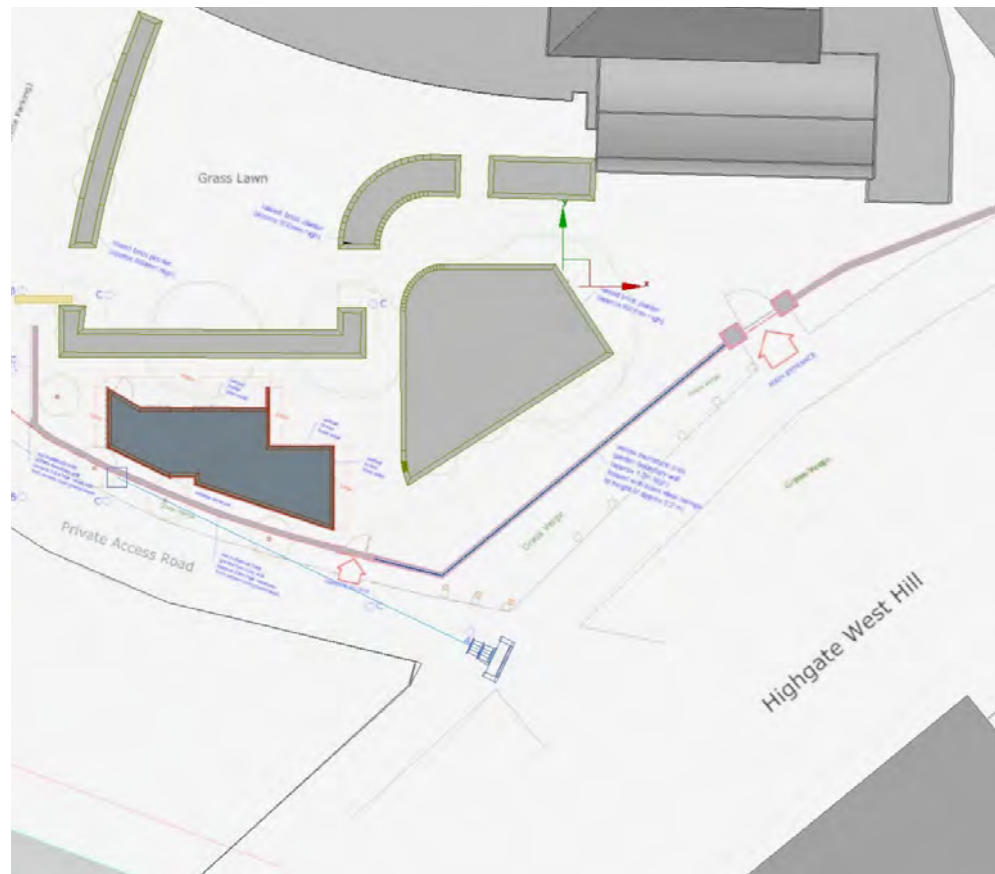




Apothecary House, Highgate

Image Ref	Camera	Focal Length	Aperature	Shutter Speed	Orientation
View_03 - IMG-4842	Iphone 11 Pro Max 4.25mm f1.8	26mm	f1.8	1/280s	Landscape





Studio 10
Fox's Marina
The Strand
Ipswich
IP2 8NJ

Tel: 07545 164 699
Tel: 01473 684 900

Dan@danielfisher.co.uk