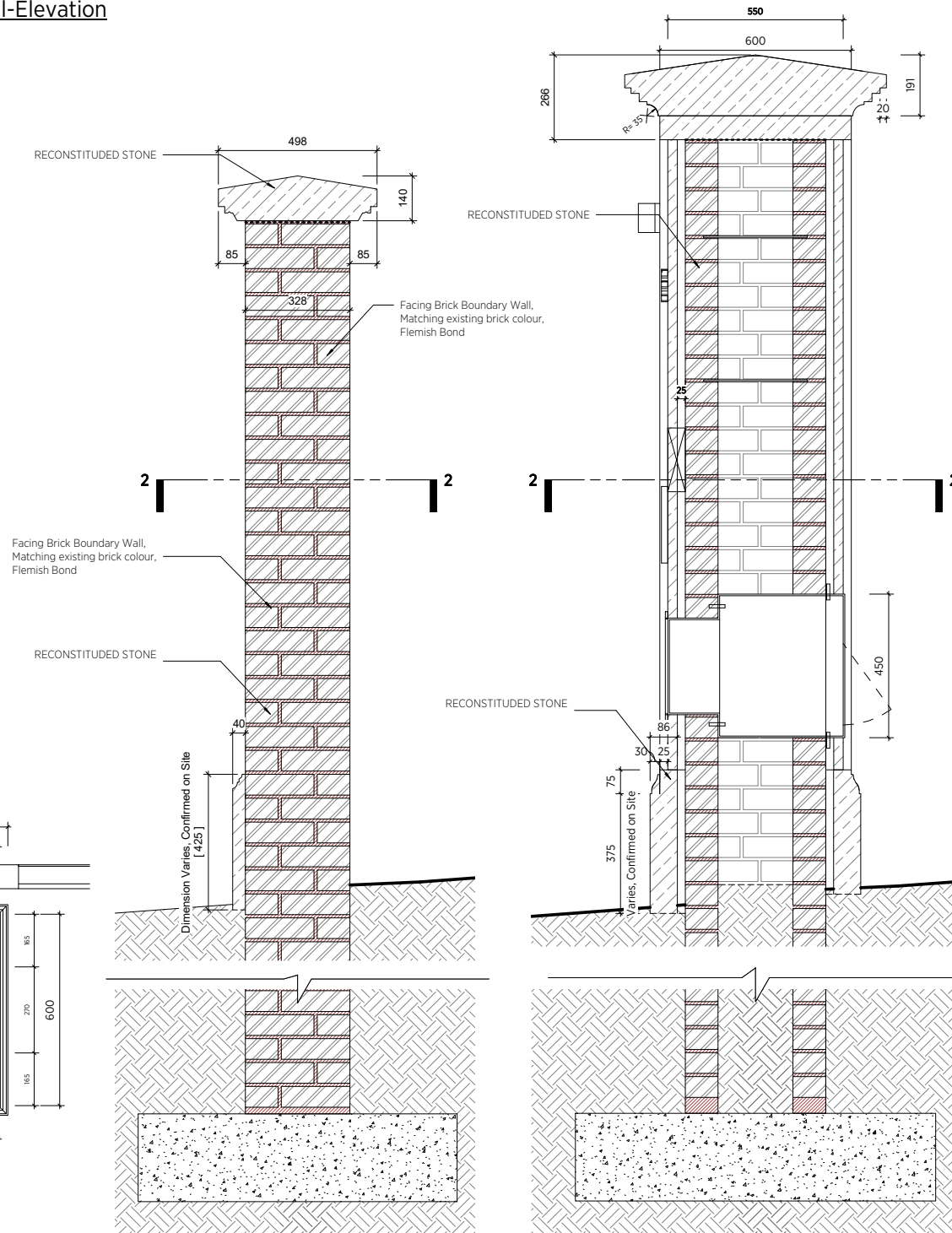
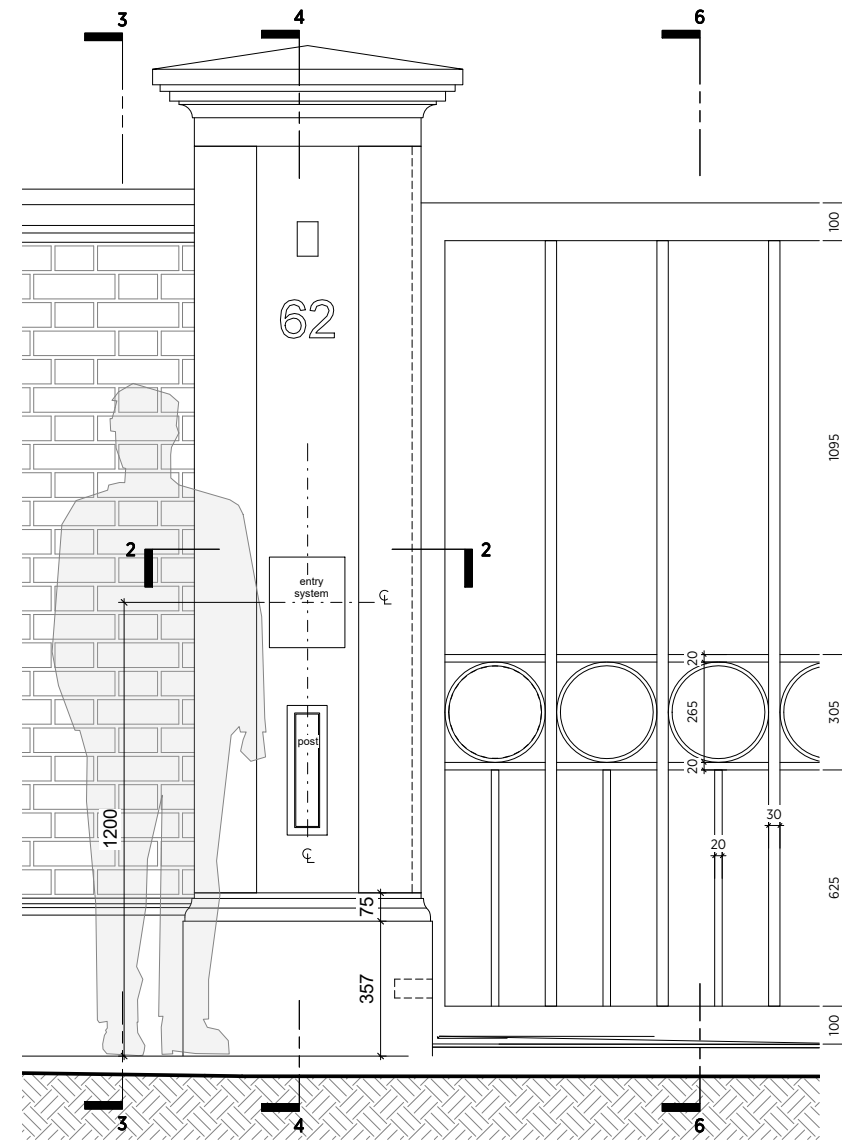


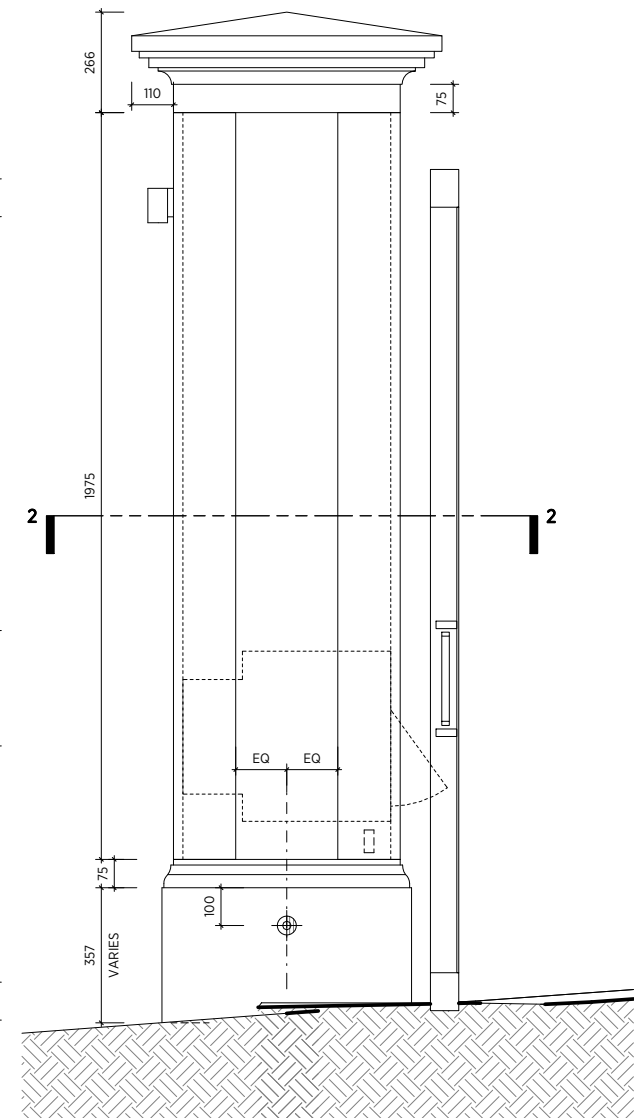
1 Proposed Front Boundary Wall-Elevation
1:25



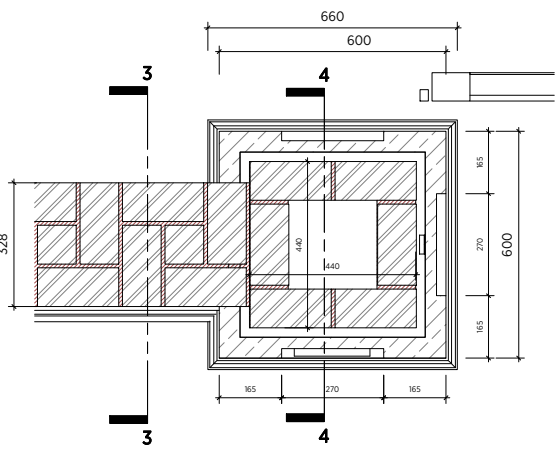
3 Boundary Wall Typical-Section
1:10



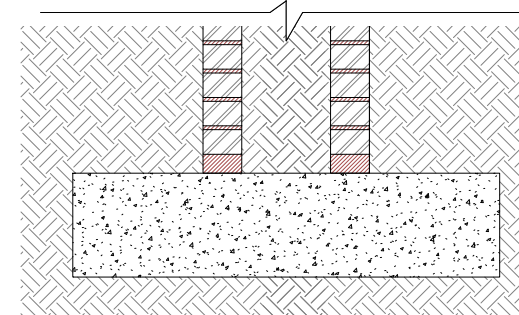
5 Gate Pier-Front Elev
1:10



6 Gate Pier-Side Elev
1:10



2 Gate Pier Detail-Plan
1:10



4 Gate Pier Detail-Section
1:10

General Notes
 This drawing is copyright of KSR architects. This drawing must be read in conjunction with the Designer's Risk Assessment, specification and all other relevant documentation and drawings.
 KSR architects accept no liability for any expense, loss or damage of whatsoever nature and however arising from any variation made to this drawing or in the execution of the work to which it relates which has not been referred to them and their approval obtained.
 Areas are based on un-checked survey and are approximate only. Do not be used. Refer to latest scale for guidance.
 Check all dimensions on site prior to carrying out any works and advise any discrepancy.

Status:
 Scale:
 Project:
62 Avenue Road
 Date of first issue: 05/05/21
 Drawn By: SA
 Checked By: MZ
 Drawing No: **19021-EZR-901**
 Rev: Front gate and boundary wall

KSR ARCHITECTS & INTERIOR DESIGNERS
 KSR Architects Ltd
 14 Greenland Street
 London NW1 0ND
 Tel: +44 (0)20 7638 5000
 www.ksrarchitects.com

Rev	Description	Date	By