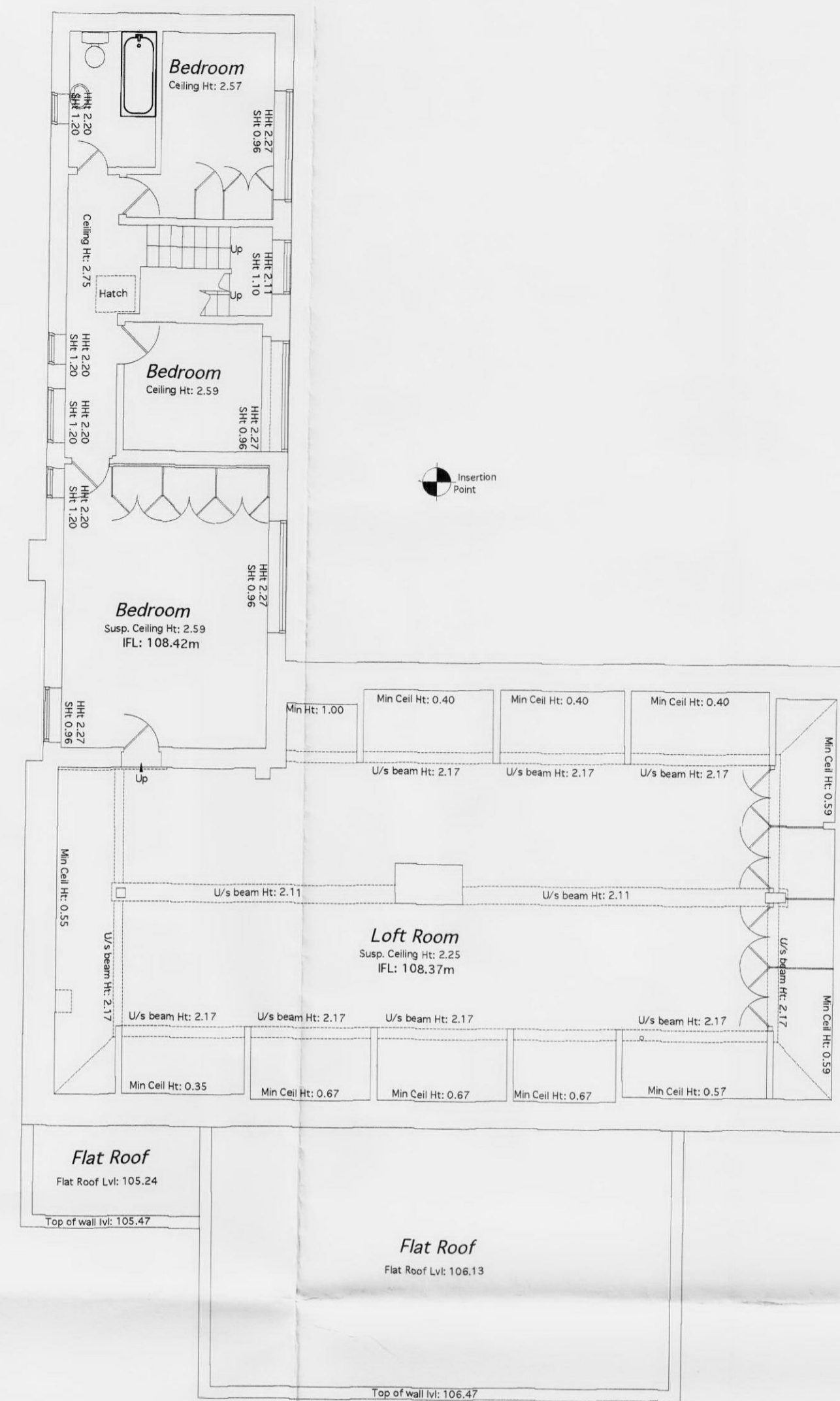
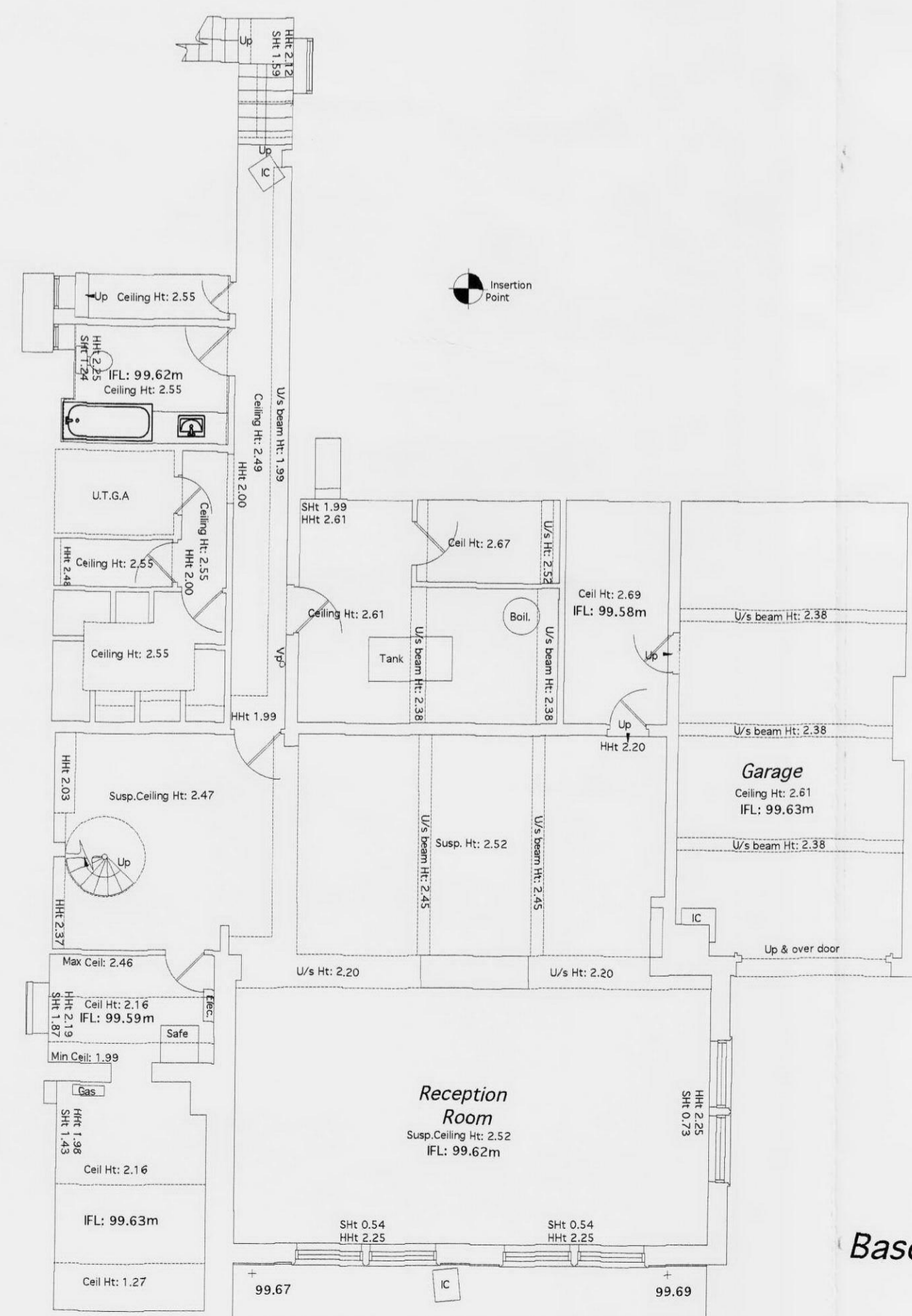


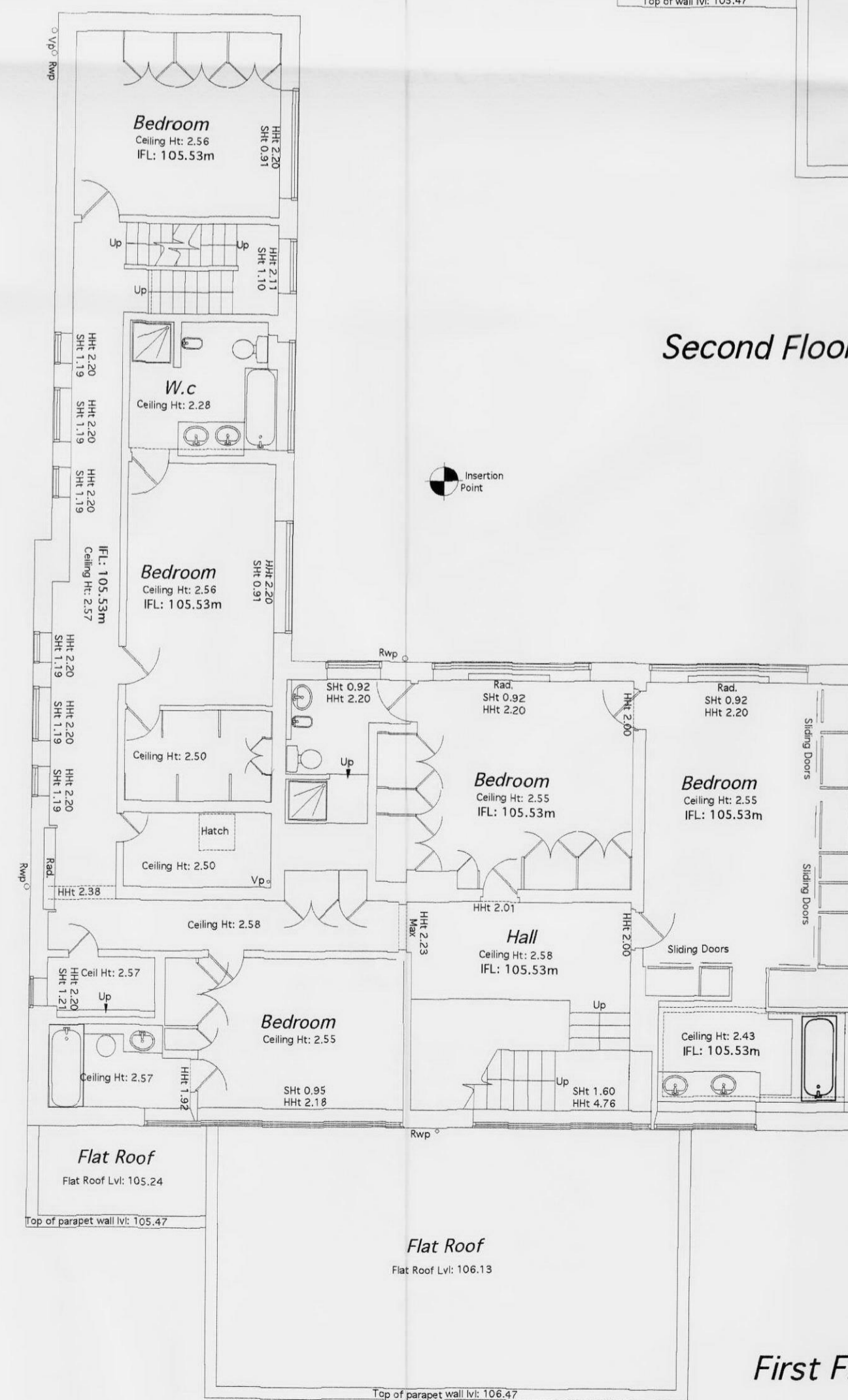
Ground Floor Plan.



Second Floor Plan.



Basement Floor Plan.



First Floor Plan.

Station Information:

Station	Easting (m)	Northing (m)	Level (m)
1			
2			
3			
4			
5			
6			
7			
8			
9			
10			

Building Survey Legend:

SHT 1.00	Soil Height from FFL
HR 2.12	Head Height from FFL
SL 51.03m	Soil Level from datum datum
HL 52.82m	Head Level from datum datum
Susp CH: 2.00	Suspended Ceiling Height from FFL
Struct CH: 3.00	Structural Ceiling Height from FFL
Susp Cel: 30.00m	Suspended Ceiling Level from datum
Struct Cel: 31.00m	Structural Ceiling Level from datum
IFL: 100.00m	Internal Floor Level (General)
+100.00m	Internal Floor Level (Specific)

Topographical Legend:

Notes:  
 1. Although O.S. contours may be shown on this plan the grid is to be treated as arbitrary.  
 2. The scale factor has been applied to the survey traverse but any coordinates shown are not O.S. coordinates.  
 3. Please refer to Survey Station Coordinates Table above to determine correct easting/northing of the grid and grid height.

Symbol	Description
[Symbol]	Boundary
[Symbol]	Wall
[Symbol]	Window
[Symbol]	Door
[Symbol]	Stair
[Symbol]	Arch
[Symbol]	Roof
[Symbol]	Flat Roof
[Symbol]	Parapet Wall
[Symbol]	U's Beam
[Symbol]	Radiator
[Symbol]	Boiler
[Symbol]	W.C.
[Symbol]	Kitchen
[Symbol]	Living Room
[Symbol]	Bedroom
[Symbol]	Hall
[Symbol]	Reception Room
[Symbol]	Garage
[Symbol]	Utility
[Symbol]	Storage
[Symbol]	Other

**SUPERSEDED**  
 19 NOV 2012



Topographical Surveys  
 Site Engineering  
 14 Town House  
 Duffield Road  
 Little Eaton  
 Derby  
 DE21 5JH  
 Tel (01332) 830044 Fax (01332) 830055  
 admin@greenhatch-group.co.uk

CLIENT:  
 PROJECT: **62 Avenue Road  
 St. Johns Wood  
 London**

TITLE: **Existing Floor Plans**

NO.	DATE	DRAWN	QUALITY REP.
1: 200	Nov 09	SP	D0255
Level datum	95.00m		
Sig. operation	Arbitrary		
Job number	13826		
Drawing No.	13826_03_ES		

This plan should only be used for its original purpose. Greenhatch Ltd accepts no responsibility for this plan if supplied to any party other than the original client.  
 All dimensions should be checked on site prior to design and construction.  
 Drainage information (where applicable) has been visually inspected from the surface and therefore should be treated as approximate only.

DO NOT SCALE