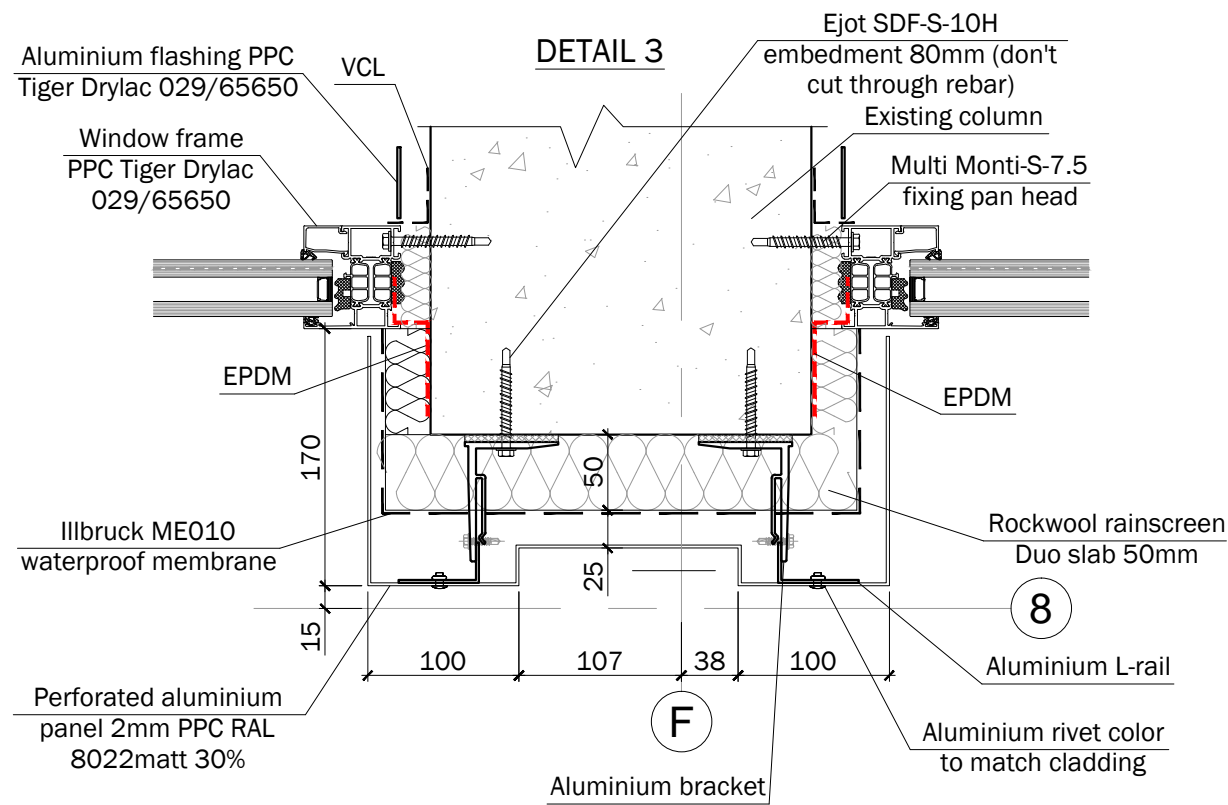


All penetrations in Illbruck membrane to be sealed in accordance with waterproofing specialist's details. Detail between window frame and membrane as per manufacturer's requirements



C02	General update	13.08.21	DB	JA	Project  GREVILLE STREET		
C01	Issued for construction	26.07.21	DB	JA			
P01	Issued for comments	13.04.21	DB	JA			
Rev No	Revision note	Date	Drawn	Checked	Drawing Cladding detail 3		
Client RED Construction Group Ltd					Drawn By DB	Status For construction	
Drawn By Dmitro Facades Unit 17, Dunstall Estate Leight Place, Welling Kent, DA16 3JH					Scale 1:5 A3	Date 13.04.21	
					DWG No GS-DFL-XX-00-DR-X-0003	POI A5	Rev C02