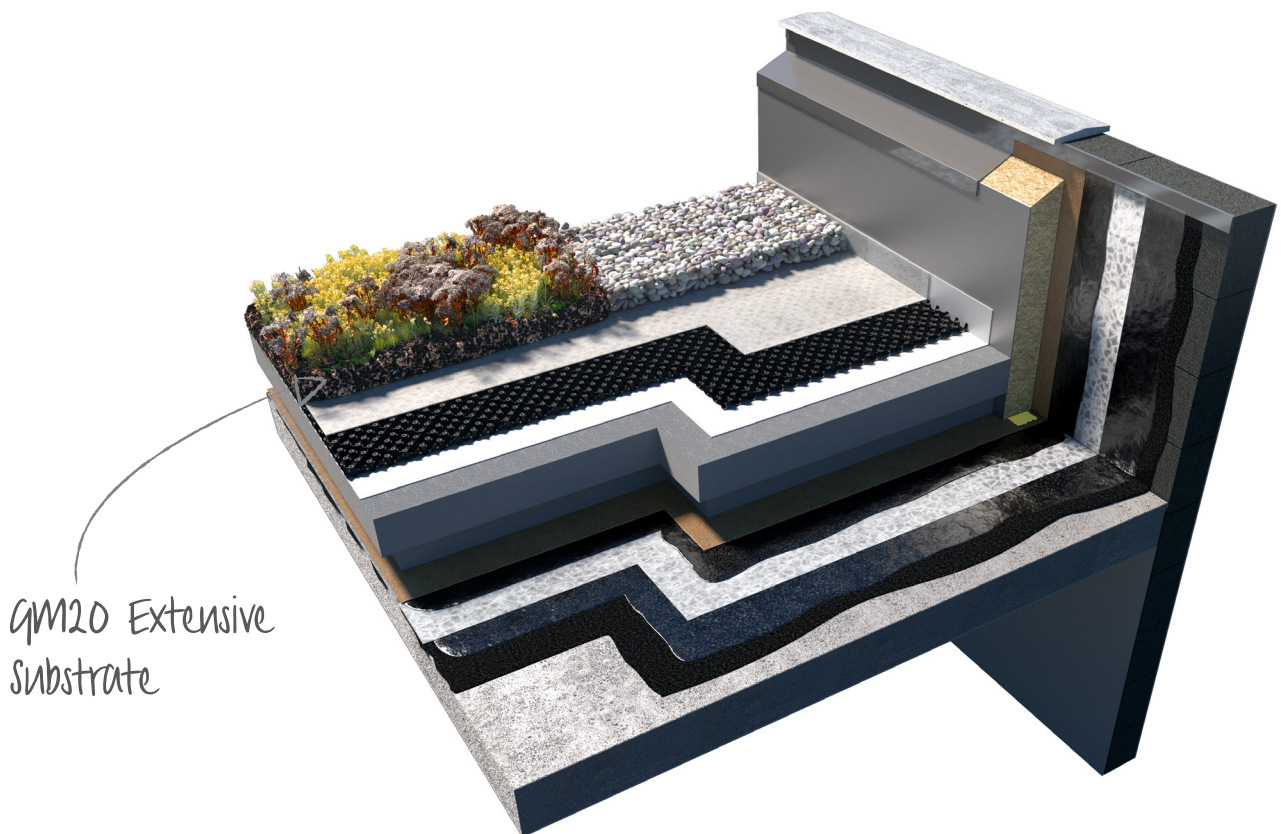


GM20 Extensive Substrate

Product Data Sheet



An extensive substrate providing a suitable growing medium for a self-sustaining plant community consisting of pre-grown sedum plug plants or pre-grown sedum blankets.

GM20

Extensive Substrate

General Information

Radmat GM20 Extensive Substrate provides a suitable growing medium for a self-sustaining plant community consisting of pre-grown sedum plug plants or pre-grown sedum blankets (see separate Product Data Sheets for species options). Consisting of a blend of water retaining aggregates, crushed brick and organic material, all composted material is from sustainable sources and the crushed brick element is a by-product or a second from the brick manufacturing industry and contains no demolition waste. Compliant with GRO substrate guidelines.

Application areas

Sedum based green roofs using pre-grown sedum plugs or pre-grown sedum blanket. Install GM20 Extensive Substrate on either Radmat D25 or D40 drainage/reservoir board covered with G11 filter fleece in accordance with the Radmat specification.

Installation instructions

Apply to a depth as specified according to plant type allowing 10% post installation settlement. Indicative substrate depths are given in the table below, however the specified depth will vary based on a variety of factors including design load, building location, building height, plant species etc. It is therefore important to consult the project specification.

PLANTING METHOD	ROOF TYPE	POST SETTLEMENT SUBSTRATE DEPTH
Pre-grown sedum plugs	Inverted Roof	80mm
Pre-grown sedum blanket	Inverted Roof	70mm
Pre-grown sedum plugs	Warm Roof	60mm
Pre-grown sedum blanket	Warm Roof	50mm

Delivery conditions

Delivery Form 1.25m³ Bulk Bags - 25 litre Sacks.



GM20

Extensive Substrate

TECHNICAL FEATURES

Essential Characteristics	Composition	Performance	Unit
Bulk Density	Dry Weight by max water capacity	850 - 900 1060 - 1125	kg/m ³ kg/m ³
Coarse Fragments	> 2mm	70	Vol %
Grain size distribution	Particle size below 0.063mm Particle size > 4.0mm	2.1 92.8	Mass % Mass %
Weight per volume	Dry Weight by max water capacity	1000 1260	kg/m ³ kg/m ³
Water / Air conditions	Total pore volume Maximum water capacity Air content as max water capacity Hydraulic permeability	63.3 25.8 37.5 82	Vol % Vol % Vol % mm/min
Ph/Salinity	Ph value Salinity (water extract) Salinity (gypsum extract)	7.8 1.97 1.28	g/l g/l g/l
Organic matter	Organic matter (LOI)	38	g/l
Available nutrients	Nitrogen (N) Phosphorous (P) Potassium (K) Magnesium (Mg)	34 ≤ 50 ≤ 500 100	mg/l mg/l mg/l mg/l
Impurities	Tiles, glass, ceramics Metals, plastics Area sum for plastics	0.0 0.0 0.0	% weight % weight cm ² /l

This information given in good faith and is based on the latest knowledge available to Radmat Building products Ltd. Whilst every effort has been made to ensure that the contents of the publication are current while going to press, customers are advised that products, techniques and codes of practice are under constant review and liable to change without notice.

For further information on Radmat products and services please call **01858 410372**, email techenquiries@radmat.com or visit our website www.radmat.com **MAY 2019**