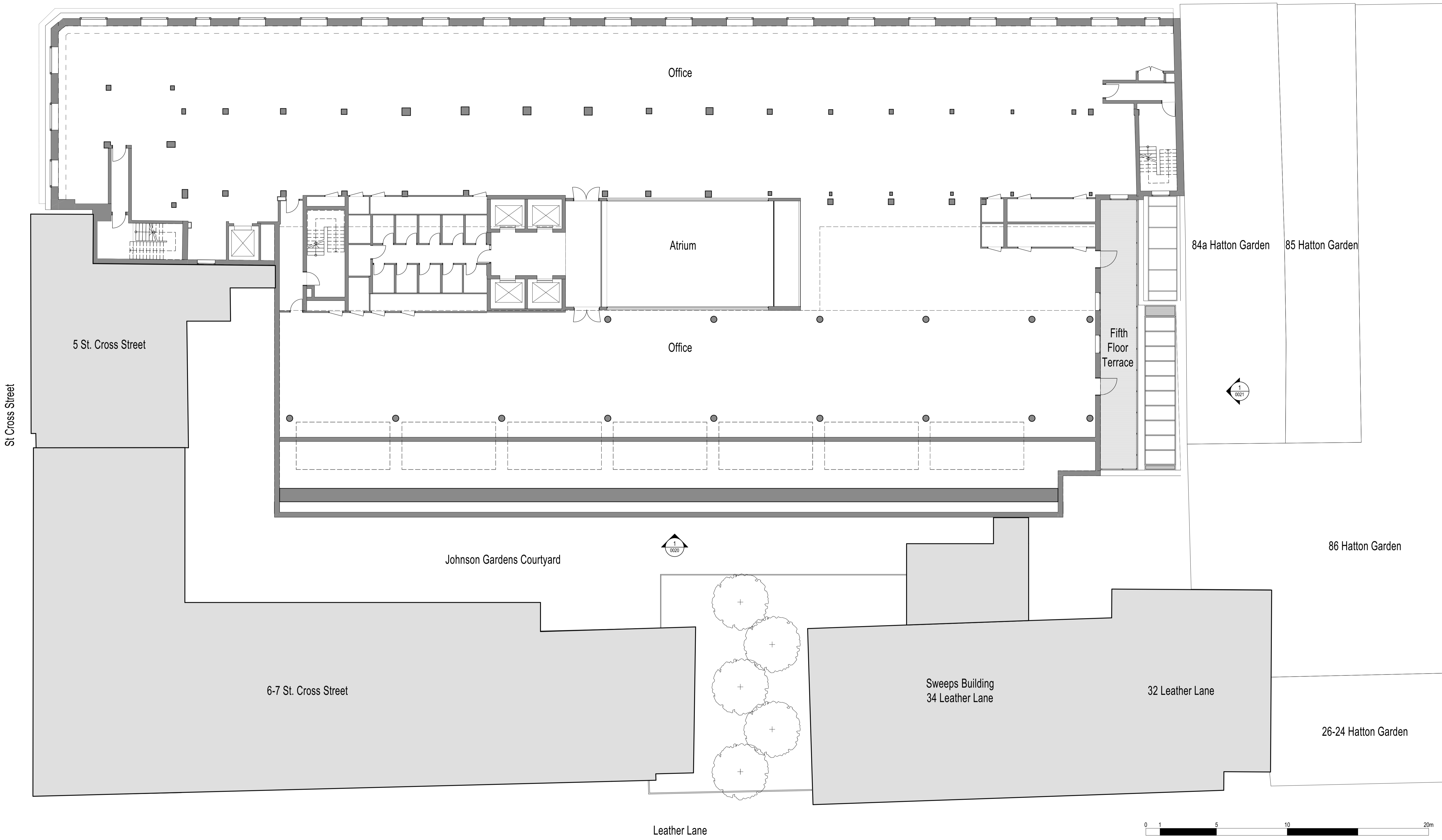


Hatton Garden



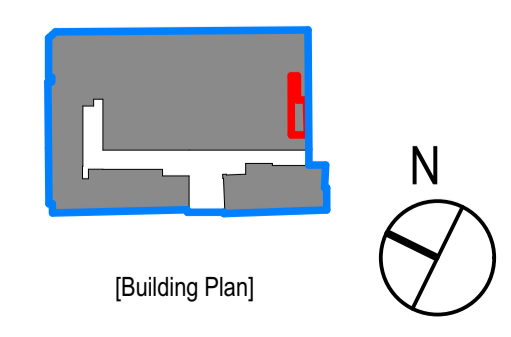
This document and its design content is © John Robertson Architects Ltd. It shall be read in conjunction with all other associated project information including models, specifications, schedules and related consultants documents. Do not scale from documents. All dimensions to be checked on site. Immediately report any discrepancies, errors or omissions on this document to the Originator. If in doubt ASK.

| Rev | Date       | Dwn | Chk | Description        |
|-----|------------|-----|-----|--------------------|
| P02 | 08/08/2021 | AM  | LM  | For Information    |
| P03 | 20/08/2021 | AM  | LM  | Issue for Planning |

| Rev | Date | Dwn | Chk | Description |
|-----|------|-----|-----|-------------|
|     |      |     |     |             |

| Rev | Date | Dwn | Chk | Description |
|-----|------|-----|-----|-------------|
|     |      |     |     |             |

KEY PLAN / NORTH SYMBOL



**JRA**  
John Robertson Architects

111 Southwark Street,  
London, SE1 0JF  
02076335100  
www.jra.co.uk  
enquiries@jra.co.uk

Project  
**Johnson Gardens**  
London

Client  
**Johnson Hatton Office Unit Trust**

11-15 Seaton Place St Heller  
Jersey JE4 0QH UK

|               |  |                      |            |
|---------------|--|----------------------|------------|
| Drawing Title | <b>Johnson Building - Existing Fifth Floor</b> |                      |            |
| Scale         | 1:125 @ A1 / 1:250 @ A3                        | Internal Project No. | 1985       |
| Dwg No.       | <b>1985-JRA-01-05-DR-A-0015</b>                |                      |            |
| Suitability   | FOR INFORMATION                                |                      | S2         |
| Revision      | PRELIMINARY                                    |                      | <b>P03</b> |

Source File: BIMcloud: STSBIM23 - BIMcloud Basic for ARCHICAD 23/1985 - The Estate/1985-JRA-00-ZZ-M3-A-0002\_The Estate