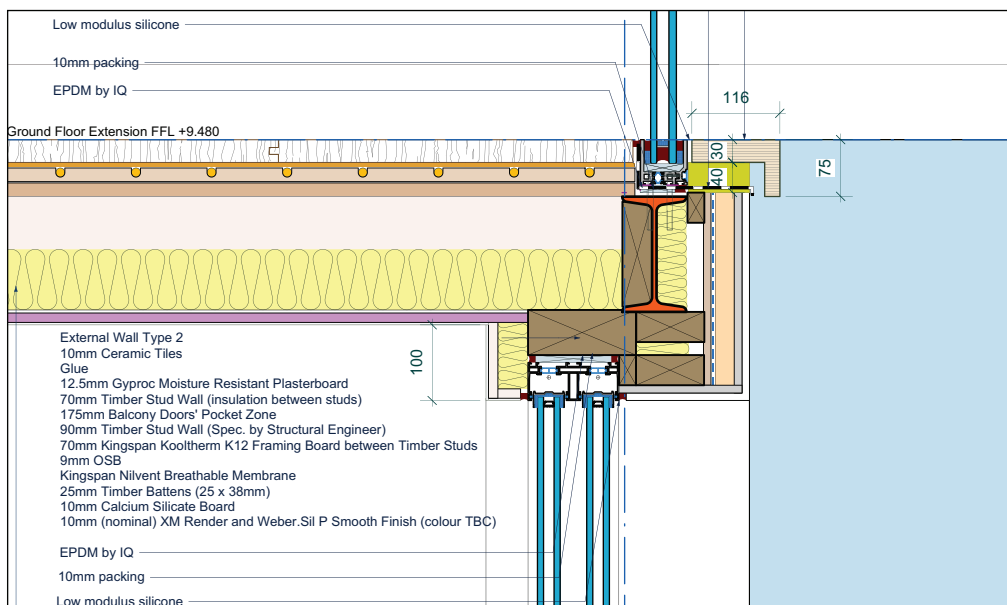
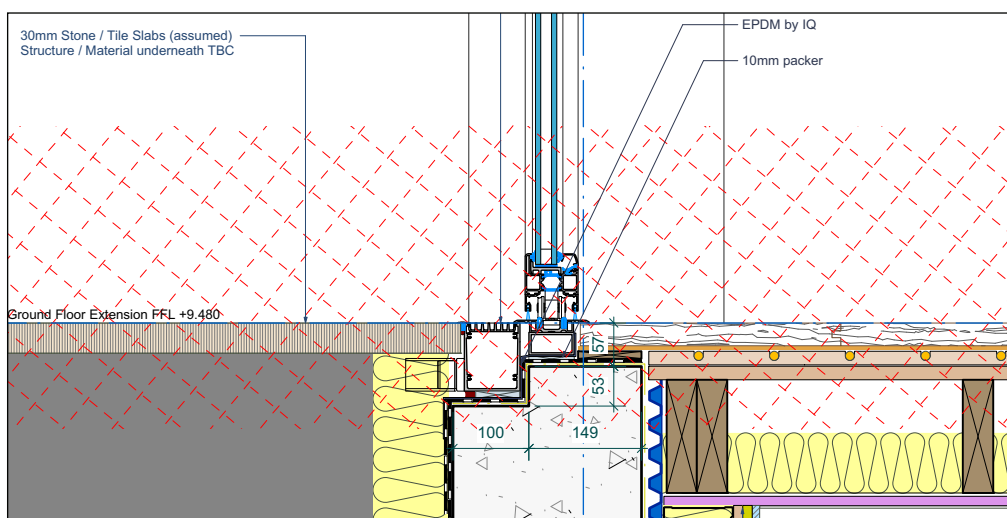


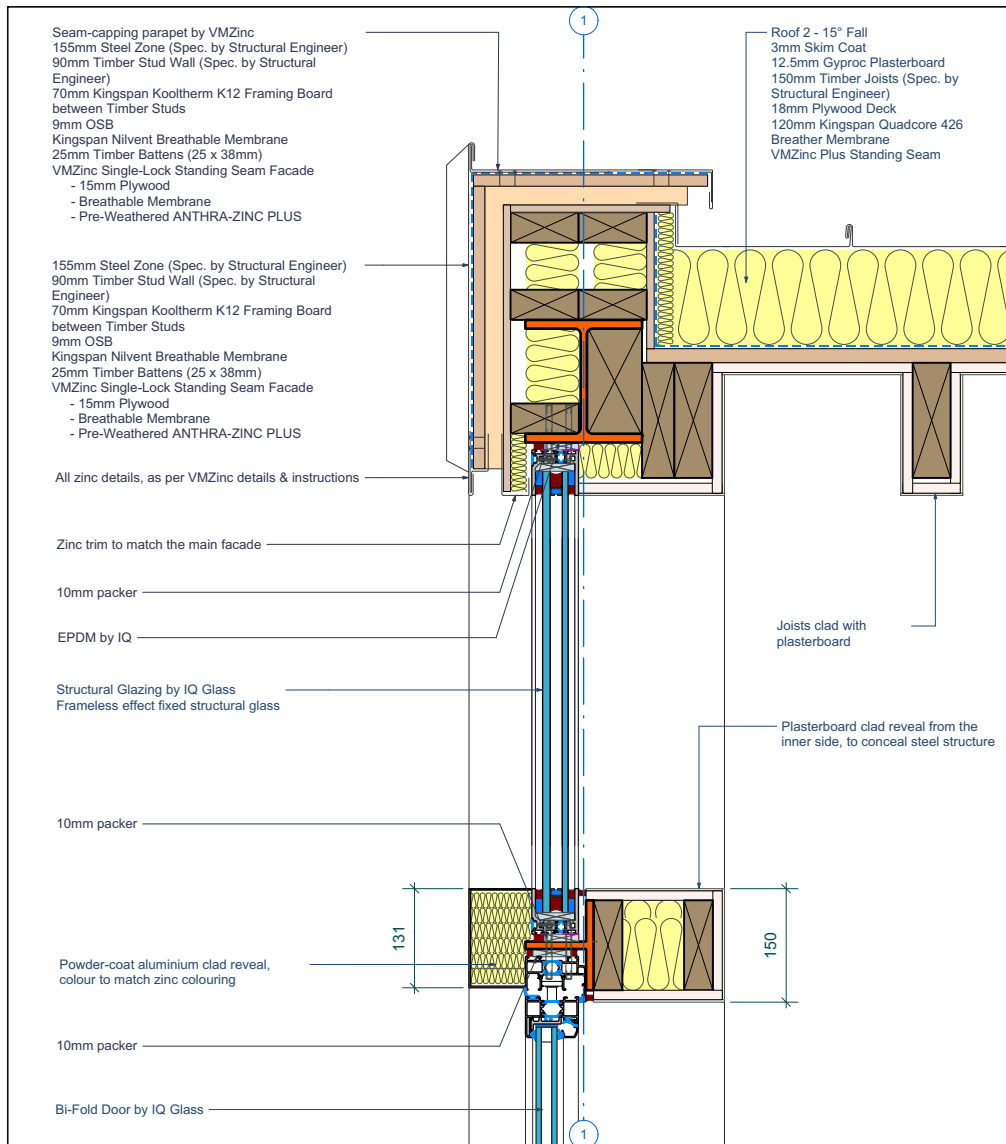
Detail 6 - Sliding Door Cill, Scale 1:10



Detail 7 - Fixed Glazing Cill & Sliding Door Head, Scale 1:10



Detail 8 - Bi-Fold Door Cill, Scale 1:10



Detail 9 - Fixed Glazing Cill and Head & Bi-Fold Door Head, Scale 1:10

4b. The two materials used on the new extension's facades are Zinc and Render. Zinc facade will be used as VMZinc Flat Lock Panel & as VMZinc Single Lock Standing Seam systems. Both systems are supplied by VMZinc, and their specification will be sent as an addendum to this document.



VMZinc Standing Seam Example



VMZinc Flat Lock Panel Example

Render facade will be used as WeberTherm XM with WeberSil P smooth finish in a off-white colour. The render system is supplied by Weber Saint-Gobain, and it's specification will be sent as an addendum to this document.

The material samples will be provided on site and shall be retained on site during the course of the works.