

## S3 PUBLIC REALM

## KINGS CROSS CENTRAL

### Applied Landscape Design

### Materials Tracker to Discharge:

Planning Application ref.: 2019/5379/P

Reserved matter condition 2B & 2F

Building S3, Kings Cross Central

ALD Project Ref: 854

Document Ref: ALD854\_RP901

Document Revision: P01

Current Issue Date: 29.07.2021

ALD working date: 29.07.2021

Reason For Issue: PLANNING

Prepared By: Applied Landscape Design Ltd  
Landscape Architect

Client: ARGENT(KCCGLP)







## INTRODUCTION

This document has been prepared to discharge the following planning conditions as highlighted below:

Application Ref. 2019/5379/P - S3 Kings Cross

CONDITION	DETAILS OF CONDITION	NOTES
2	Prior to commencement of the relevant part of the development hereby approved, the following details shall be submitted to and approved in writing by the Local Planning Authority:	
2A	Details including sample panels of all external materials and finishes. The material under this condition shall be displayed in the form of a samples board to be retained on site for the duration of the relevant works	Not covered within this document
2B	Details including samples panel of typical paving, setts and other hard landscape surface treatments. The samples to demonstrate all materials and typical variations of pattern relationships within those materials;	Information included within this document.  <b>NOTE:</b> PAVING ELEMENTS UNIQUE TO CHILTON LANE ARE NOT INCLUDING IN THIS DOCUMENT. THESE ARE TO BE DEALT WITH UNDER A SEPARATE SUBMISSION BY THE BUILDING DELIVERY TEAM (2019/5379/P, CONDITION 6)
2C	Details of all soft landscaping within the public realm	Not applicable
2D	Details of landscaping features and plant species to be incorporated within the roof terraces	Not covered within this document
2E	Details of lighting within the public realm, to include location, design, specification, fittings and fixtures;	Not covered within this document
2F	Details of any street furniture provided in the public realm.	Information included within this document



**PAVING MATERIALS**

Material Code	Material Details	Location	Detail drawing number	Supplier	Photo	Location example
<b>NATURAL STONE SLABS &amp; SETTS</b>						
P1	Scoutmoor Yorkstone Paving Type 1 600-900mm long x 600mm wide x 50mm deep Diamond Wire Cut	Canal Reach Footway West of Building S3	ALD854_LD701	Marshalls		R1 footpaths, Handyside Street / Site wide Kings Cross
P2	Scoutmoor Yorkstone Paving Type 2 394mm long x 194mm wide x 50mm deep Diamond Wire Cut	Chilton Square, Keswidee Lane & Chilton Yard Footway	ALD854_LD702 & ALD854_LD710	Marshalls		Q&R Jellicoe gardens (North of Building R1)
P3	Granite Sett Paving Type 1 200/250/300mm long x 100mm wide x 150mm deep Sawn Fine Picked Colour Mix: 10% Smokey Black, 30% Albion Grey, 25% Millennium Mauve, 25% Millennium Pink, 10% Elelanor Red	Bus Layby & Carrigeway Setts West of Building S3	ALD854_LD703	Marshalls/ Hardscape		Stable Street / Sitewide Kings Cross
P4	Granite Sett Paving Type 2 200/250/300mm long x 100mm wide x 75mm deep Sawn Fine Picked Colour Mix: 30% Albion Grey, 30% Millennium Mauve, 30% Millennium Pink, 10% Elelanor Red	Chilton Yard	ALD854_LD704	Marshalls/ Hardscape		First known use of colour mix within Estate. Refer to site wide carrigeway mix, granite setts type 1 for colour reference as indicated adjacent. .

**PAVING MATERIALS**

Material Code	Material Details	Location	Detail drawing number	Supplier	Photo	Location example
---------------	------------------	----------	-----------------------	----------	-------	------------------


**NATURAL STONE SLABS & SETTS**



P5	Reclaimed Granite Setts - 'Rough-Top' Band 1: 120-250mm x 80-100mm wide x approx. 100mm deep Band 2: 120-250mm x 101-115mm wide x approx. 100mm deep Band 3: 120-250mm x 116-125mm wide x approx. 100mm deep Sourced from wider Kings Cross Central site (subject to availability or approved source)	Canal Reach Footway	ALD854_LD715	Site and/or approved source		Sitewide Kings Cross
P6	Crossland Hill Yorkstone blister tactile paving 400mm long x 400mm wide x 50mm deep	Uncontrolled Crossings	ALD854_LD707 & ALD854_LD708	Marshalls		Sitewide Kings Cross

**PAVING MATERIALS**

Material Code	Material Details	Location	Detail drawing number	Supplier	Photo	Location example
---------------	------------------	----------	-----------------------	----------	-------	------------------

**KERBS & EDGES**

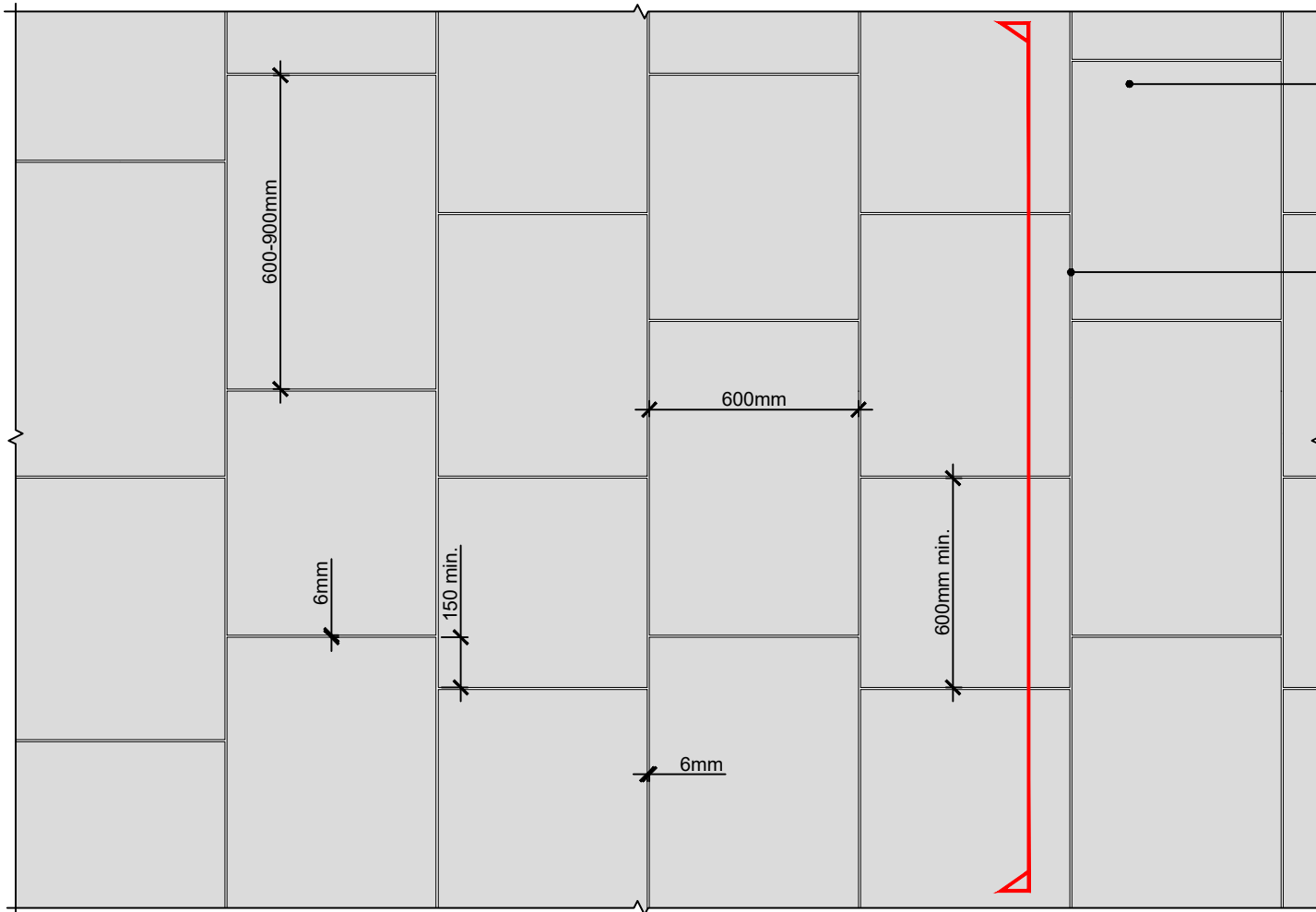
E1	Granite Kerb / Edging 1000mm long x 300mm wide x 200mm deep Fine Picked Royal White	Road kerbs generally	ALD854_LD708 & ALD854_LD713	Marshalls/ Hardscape		Sitewide Kerbs, i.e. Stable Street
----	--	----------------------	-----------------------------	-------------------------	---	---------------------------------------

Material Code	Material Details	Location	Detail drawing number	Supplier	Photo	Location example
<b><u>STREET FURNITURE</u></b>						
F1	Sheffield Satin Polished Stainless Steel Cycle Stand 1140mm high (750mm above ground) x 1000mm wide x 50mm Ø	Canal Reach Footway	ALD854_LD715	Kent Stainless		Sitewide Kings Cross
F2	Timber Bench 1800mm long x 620mm wide Air seasoned oak single sided 'Wiesbaden' bench with armrests by Michow & Sohn Metal work to be polyester powder coated with sitewide colour RAL 9023 pearl dark grey	Canal Reach Footway	ALD854_LD717	Michow & Sohn GmbH		Cubitt Park Boulevard (Note: Double sided benches with arm rests in this location.)



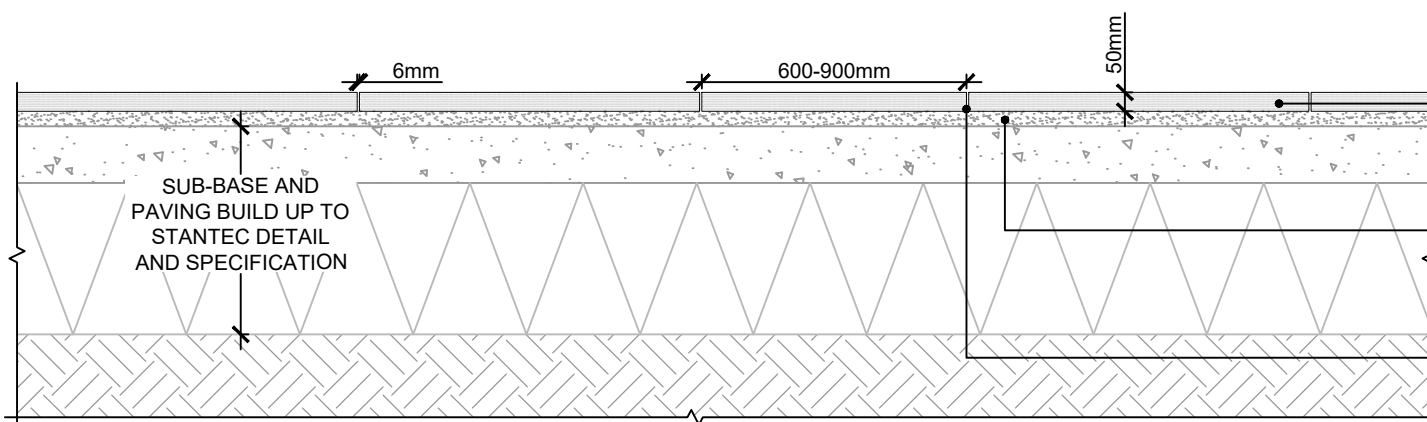
## APPENDIX A: S3 PUBLIC REALM - HARDWORKS TYPICAL DETAILS & LANDSCAPE GENERAL ARRANGEMENT





- SCOUTMOOR YORKSTONE PAVING TYPE 1 - DIAMOND WIRE CUT FINISH  
600mm WIDE x 600-900mm LONG x 50mm DEEP BY MARSHALLS OR EQUAL AND APPROVED.
- MINIMUM OVERLAP BETWEEN PAVING UNITS = 150mm
  - MINIMUM PAVING UNIT AT KERB INTERFACE = 300mm.
  - WHERE YORKSTONE ABUTS OTHER PAVING, BUILDING FACADE OR PLANTER EDGE MINIMUM UNIT LONG = 300mm
- 6mm TUFFGROUT JOINT COLOURED TO MATCH PAVING BY STEINTEC OR EQUAL & APPROVED..

**01a** DETAIL PLAN OF YORKSTONE PAVING TYPE 1 TO CANAL REACH FOOTWAY WEST OF S3  
SCALE: 1:20 @ A3



- SCOUTMOOR YORKSTONE PAVING TYPE 1 - DIAMOND WIRE CUT FINISH  
600mm WIDE x 600-900mm LONG x 50mm DEEP BY MARSHALLS OR EQUAL AND APPROVED.
- 40mm DEEP TUFFBED BEDDING MORTAR BY STEINTEC OR EQUAL AND APPROVED..
- 6mm TUFFGROUT JOINT COLOURED TO MATCH PAVING BY STEINTEC OR EQUAL & APPROVED..

**01b** DETAIL SECTION THROUGH YORKSTONE PAVING TYPE 1 TO CANAL REACH FOOTWAY WEST OF S3  
SCALE: 1:20 @ A3

LANDSCAPE ARCHITECT:

**ALD**

The Threshing Barn  
Bignell Park Barns  
Chesterton  
Oxfordshire  
OX26 1TD

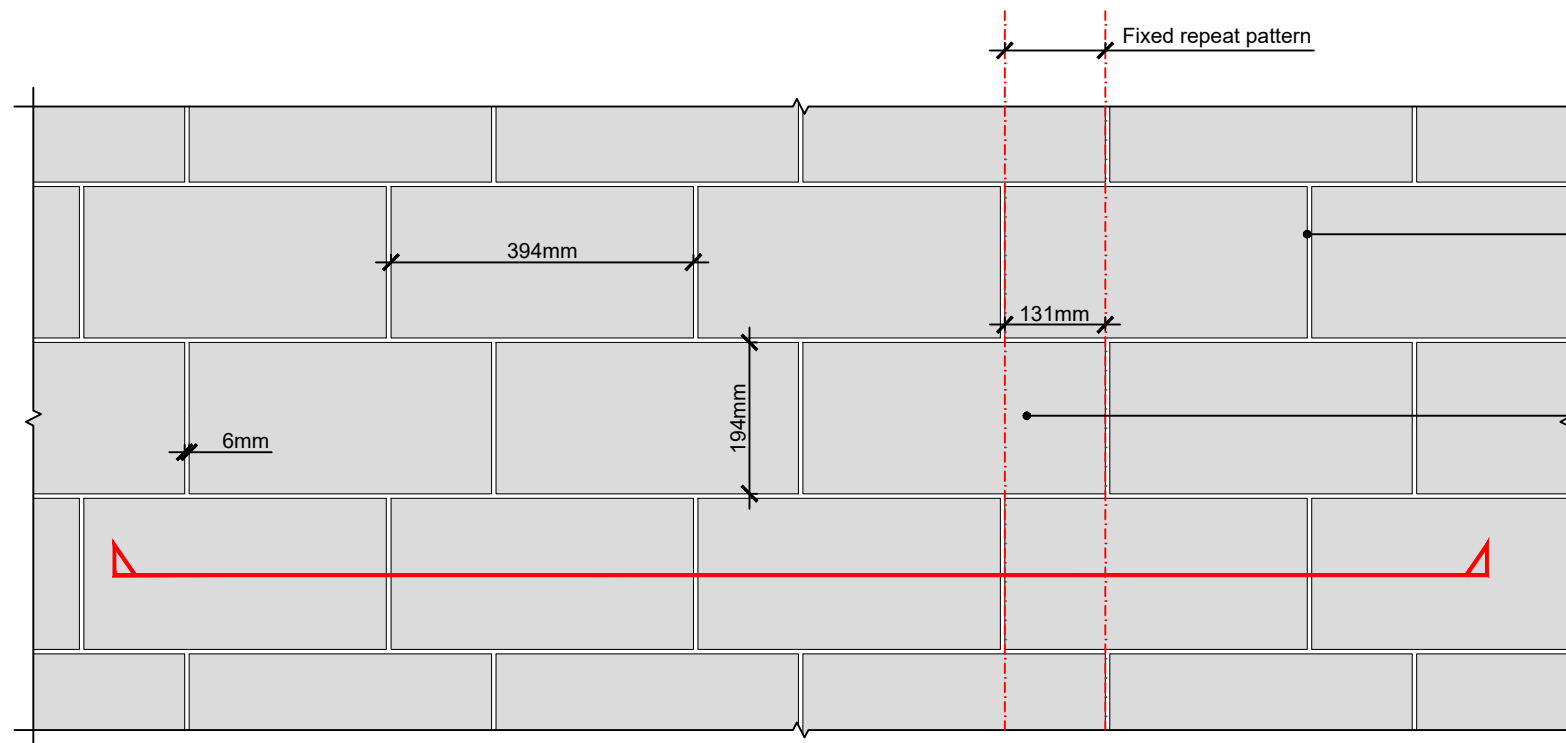
Tel: 01869 249776  
Fax: 01869 327513  
Email: mail@appliedlandscape.co.uk

© 2021 Applied Landscape Design Limited. All rights reserved.		
P02	STAGE 4 ISSUE: EMPLOYERS REQUIREMENTS	07.05.21
P01	FIRST ISSUE FOR INFORMATION	19.02.21
Rev.	Update	Date

PROJECT:	KXC: BUILDING S3 PUBLIC REALM
CLIENT:	KCCGPL

drawn:	HKM	checked:	KmJ
scale:	1:20 @ A3	date:	19.02.21
status:	INFORMATION	xref file ref:	ALD854_LDbase

DRAWING TITLE: HARDWORKS DETAIL - YORKSTONE PAVING TYPE 1		
PROJECT NO. ALD854	DRAWING NUMBER: LD701	REVISION: P02



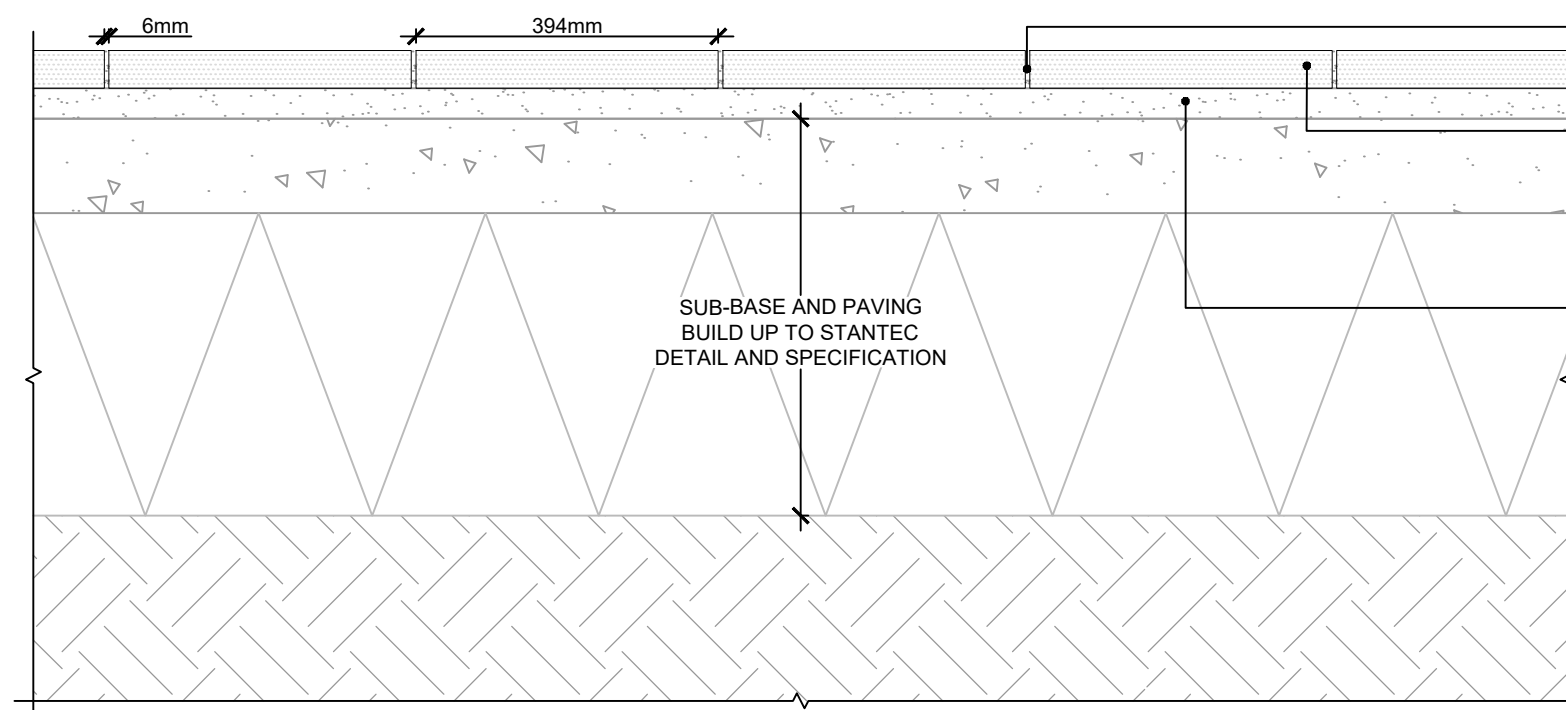
6mm TUFFGROUT JOINT COLOURED TO MATCH PAVING BY STEINTEC OR EQUAL & APPROVED..

SCOUTMOOR YORKSTONE PAVING TYPE 2 - DIAMOND WIRE CUT FINISH 194mm WIDE x394mm LONG x 50mm DEEP BY MARSHALLS OR EQUAL AND APPROVED.

- OVERLAP BETWEEN PAVING UNITS = 131mm

- WHERE SANDSTONE ABUTS OTHER PAVING OR A BUILDING FACADE MINIMUM UNIT LONG = 131mm OR UTILISE OVERSIZED UNIT WITH FALSE JOINT TO MAINTAIN PATTERN.

**02a** DETAIL PLAN ON YORKSTONE PAVING TYPE 2 TO PUBLIC REALM, LANEWAYS NORTH & SOUTH OF BUILDING S3  
SCALE: 1:10 @ A3



6mm TUFFGROUT JOINT COLOURED TO MATCH PAVING BY STEINTEC OR EQUAL & APPROVED.

SCOUTMOOR YORKSTONE PAVING TYPE 2 - DIAMOND WIRE CUT FINISH 194mm WIDE x394mm LONG x 50mm DEEP BY MARSHALLS OR EQUAL AND APPROVED.

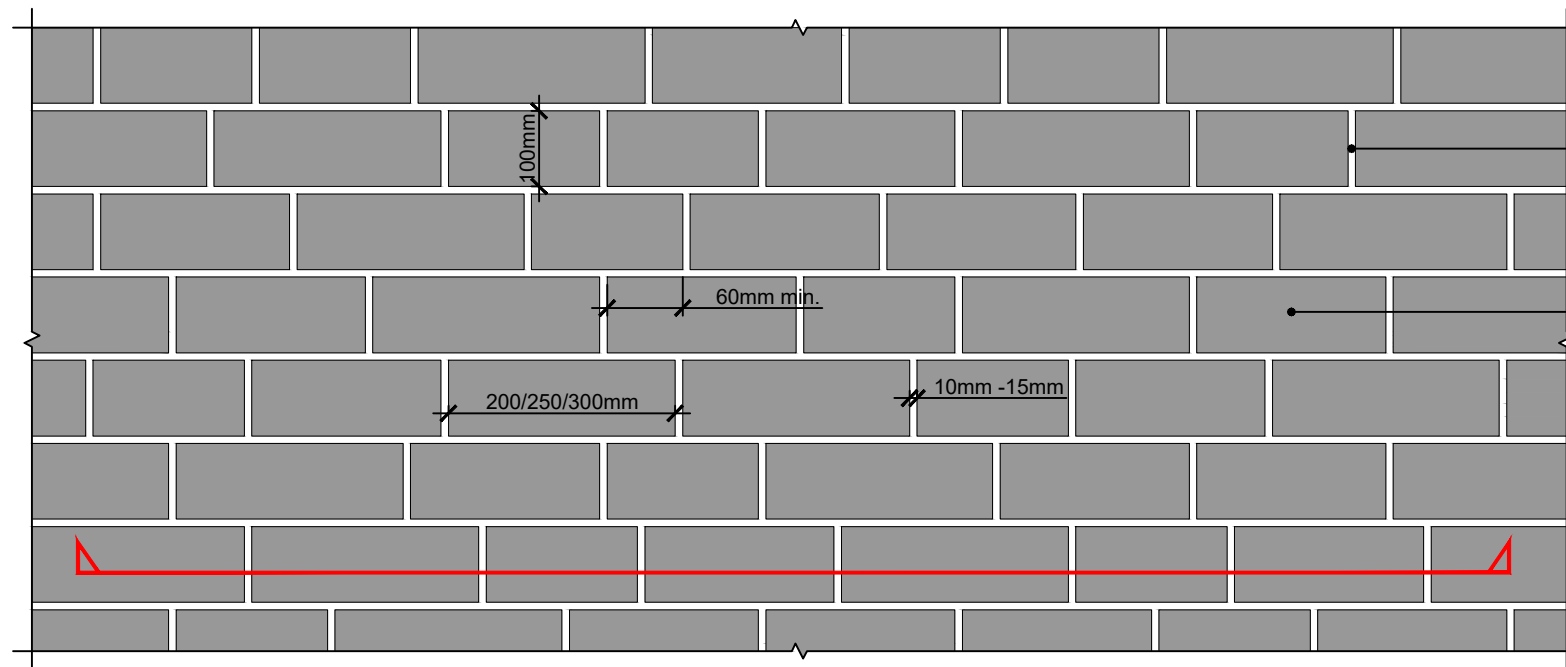
OVERLAP BETWEEN PAVING UNITS = 131mm

40mm DEEP TUFFBED BEDDING MORTAR BY STEINTEC OR EQUAL AND APPROVED.

SUB-BASE AND PAVING BUILD UP TO STANTEC DETAIL AND SPECIFICATION

**02b** SECTION OF YORKSTONE PAVING TYPE 2 TO PUBLIC REALM, LANEWAYS NORTH & SOUTH OF BUILDING S3  
SCALE: 1:10 @ A3





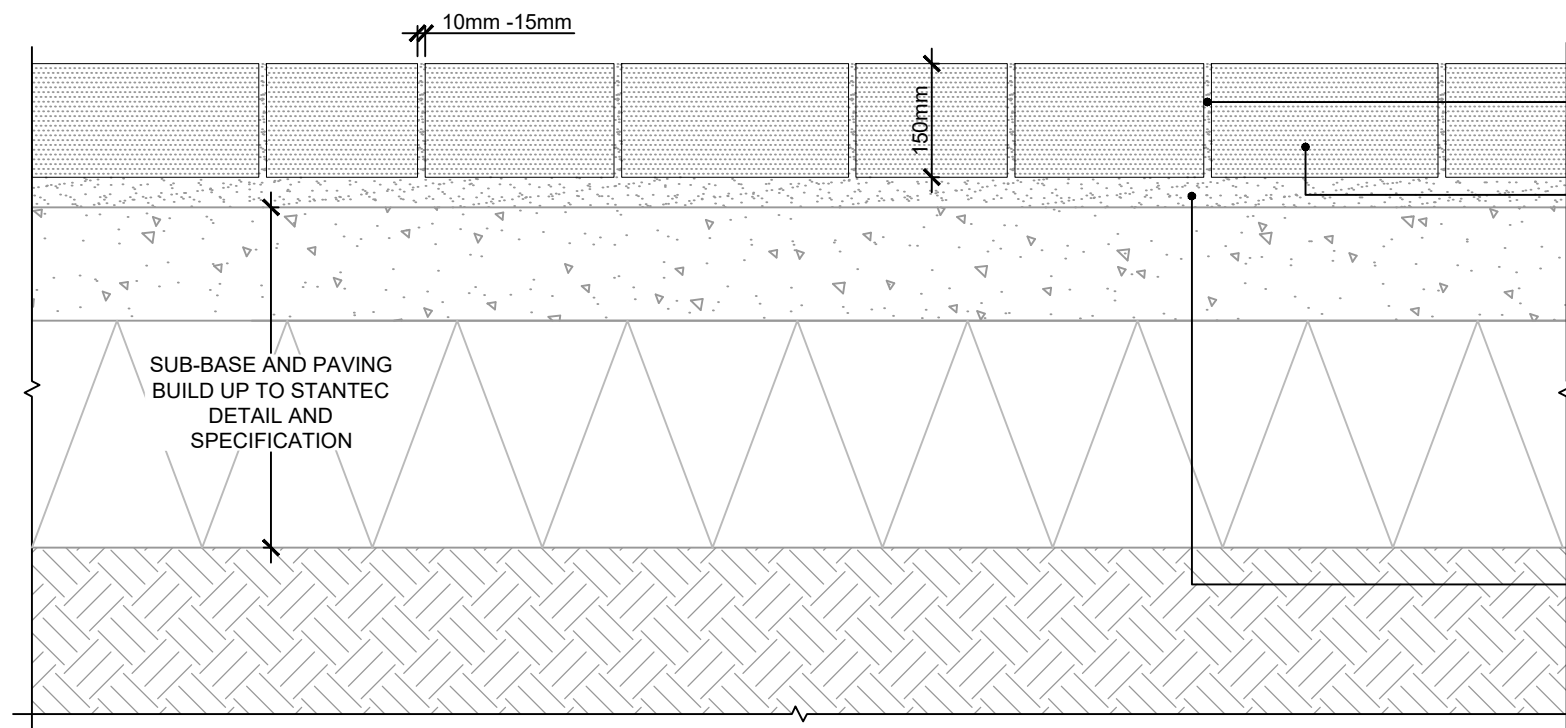
10-15mm TUFFGROUT JOINT COLOURED TO MATCH PAVING BY STEINTEC OR EQUAL & APPROVED.

GRANITE SETTS TYPE 1 - FINE PICKED  
100mm WIDE x 200/250/300mm LONG x 150mm DEEP  
BY MARSHALLS/HARDSCAPE OR EQUAL AND APPROVED. LAID IN RANDOM PATTERN.

COLOUR MIX: ALBION GREY (30%)  
MILLENNIUM MAUVE (25%)  
MILLENNIUM PINK (25%)  
ELEANOR RED (10%)  
SMOKEY BLACK (10%)

- MINIMUM UNIT LONG AT INTERFACE WITH OTHER PAVING = 100mm  
- MINIMUM OVERLAP BETWEEN PAVING UNITS = 60mm

03a DETAIL PLAN OF GRANITE SETTS TYPE 1  
SCALE: 1:10 @ A3



10-15mm TUFFGROUT JOINT COLOURED TO MATCH PAVING BY STEINTEC OR EQUAL & APPROVED.

GRANITE SETTS TYPE 1 - FINE PICKED  
100mm WIDE x 200/250/300mm LONG x 150mm DEEP  
BY MARSHALLS/HARDSCAPE OR EQUAL AND APPROVED. LAID IN RANDOM PATTERN.

MINIMUM UNIT LONG AT INTERFACE WITH OTHER PAVING = 100mm.  
(ADJACENT PAVING VARIES)

40mm DEEP TUFFBED BEDDING MORTAR BY STEINTEC OR EQUAL AND APPROVED.

03b SECTION THROUGH GRANITE SETTS TYPE 1  
SCALE: 1:10 @ A3

LANDSCAPE ARCHITECT:

ALD

applied landscape design

The Threshing Barn  
Bignell Park Barns  
Chesterton  
Oxfordshire  
OX26 1TD

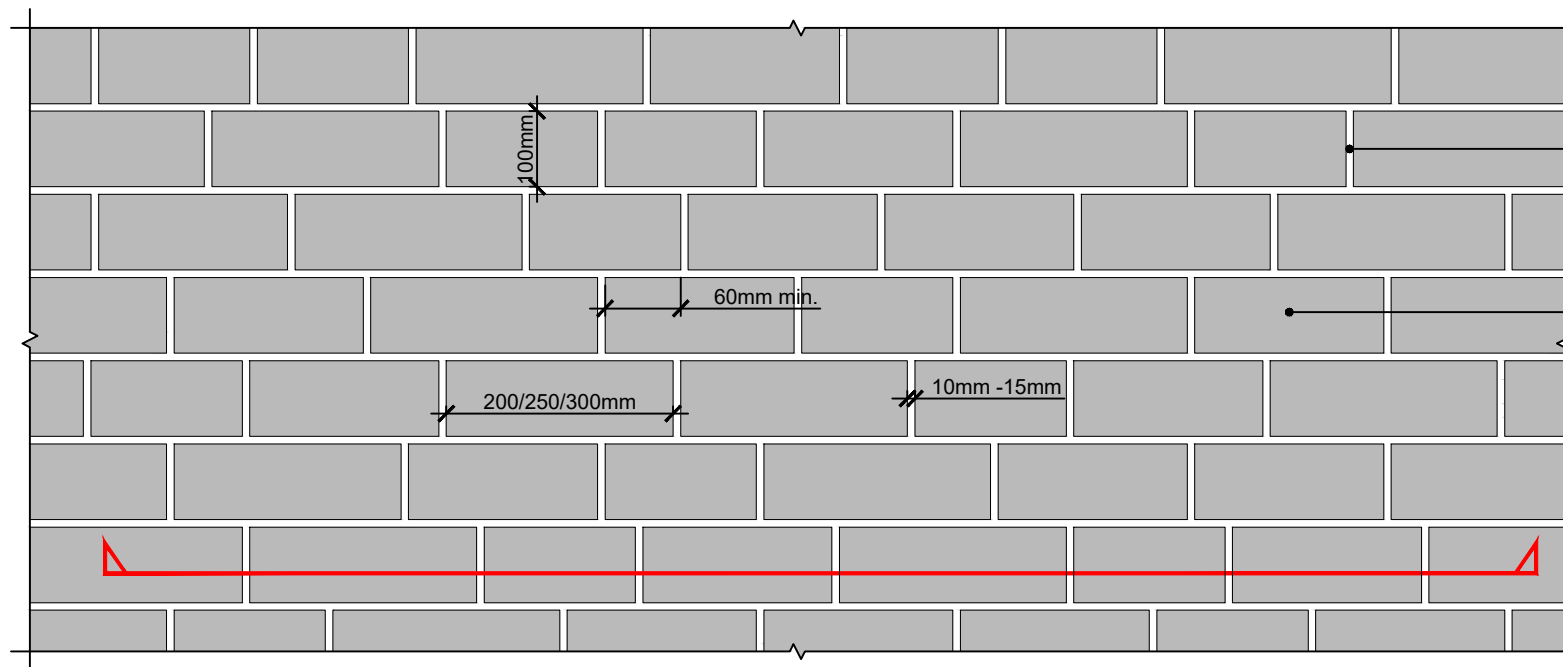
Tel: 01869 249776  
Fax: 01869 327513  
Email: mail@appliedlandscape.co.uk

© 2021 Applied Landscape Design Limited. All rights reserved.		
P02	STAGE 4 ISSUE: EMPLOYERS REQUIREMENTS	07.05.21
P01	FIRST ISSUE FOR INFORMATION	19.02.21
Rev.	Update	Date

PROJECT:	KXC: BUILDING S3 PUBLIC REALM
CLIENT:	KCCGPL

drawn:	HKM	checked:	KmJ
scale:	1:10 @ A3	date:	19.02.21
status:	INFORMATION	xref file ref:	ALD854_LDbase

DRAWING TITLE:		
HARDWORKS DETAIL - GRANITE SETTS TYPE 1		
PROJECT NO.	DRAWING NUMBER:	REVISION:
ALD854	LD703	P02



10-15mm TUFFGROUT JOINT COLOURED TO MATCH PAVING BY STEINTEC OR EQUAL & APPROVED.

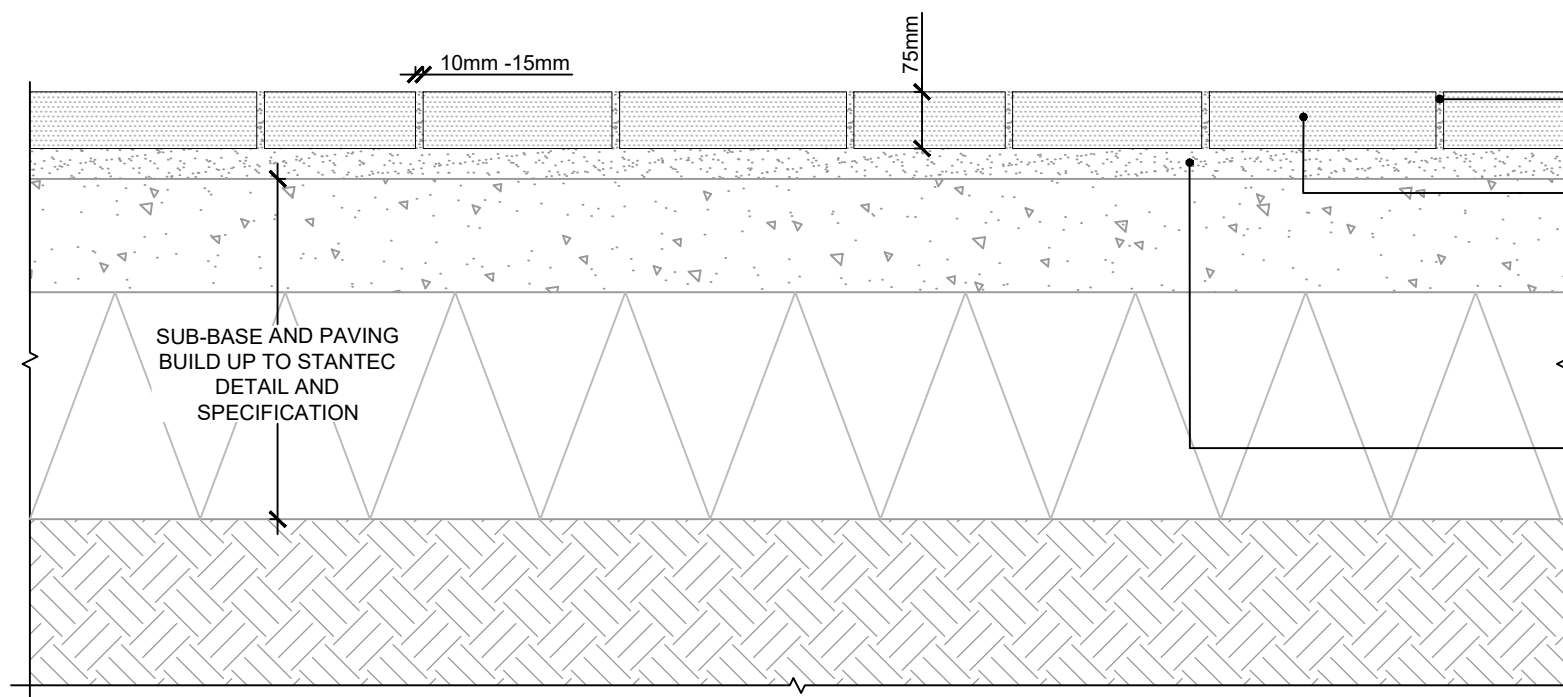
GRANITE SETTS TYPE 2 - FINE PICKED  
100mm WIDE x 200/250/300mm LONG x 75mm DEEP  
BY MARSHALLS/HARDSCAPE OR EQUAL AND APPROVED. LAID IN RANDOM PATTERN.

COLOUR MIX: ALBION GREY (30%)  
MILLENNIUM MAUVE (30%)  
MILLENNIUM PINK (30%)  
ELEANOR RED (10%)

- MINIMUM UNIT LONG AT INTERFACE WITH OTHER PAVING = 100mm.  
- MINIMUM OVERLAP BETWEEN PAVING UNITS = 60mm

04a

DETAIL PLAN OF GRANITE SETTS TYPE 2  
SCALE: 1:10 @ A3



10-15mm TUFFGROUT JOINT COLOURED TO MATCH PAVING BY STEINTEC OR EQUAL & APPROVED.

GRANITE SETTS TYPE 2 - FINE PICKED  
100mm WIDE x 200/250/300mm LONG x 150mm DEEP  
BY MARSHALLS/HARDSCAPE OR EQUAL AND APPROVED. LAID IN RANDOM PATTERN.

- MINIMUM UNIT LONG AT INTERFACE WITH OTHER PAVING = 100mm  
- MINIMUM OVERLAP BETWEEN PAVING UNITS = 60mm

40mm DEEP TUFFBED BEDDING MORTAR BY STEINTEC OR EQUAL AND APPROVED.

04b

SECTION OF GRANITE SETTS TYPE 2  
SCALE: 1:10 @ A3

LANDSCAPE ARCHITECT:



The Threshing Barn  
Bignell Park Barns  
Chesterton  
Oxfordshire  
OX26 1TD

Tel: 01869 249776  
Fax: 01869 327513  
Email: mail@appliedlandscape.co.uk

© 2021 Applied Landscape Design Limited. All rights reserved.

P02	STAGE 4 ISSUE: EMPLOYERS REQUIREMENTS	07.05.21
P01	FIRST ISSUE FOR INFORMATION	19.02.21
Rev.	Update	Date

PROJECT:

KXC: BUILDING S3 PUBLIC REALM

CLIENT:

KCCGPL

drawn:

HKM

scale:

1:10 @ A3

status:

INFORMATION

checked:

KmJ

date:

19.02.21

xref file ref:

ALD854\_LDbase

DRAWING TITLE:

HARDWORKS DETAIL  
- GRANITE SETTS TYPE 2

PROJECT NO.

ALD854

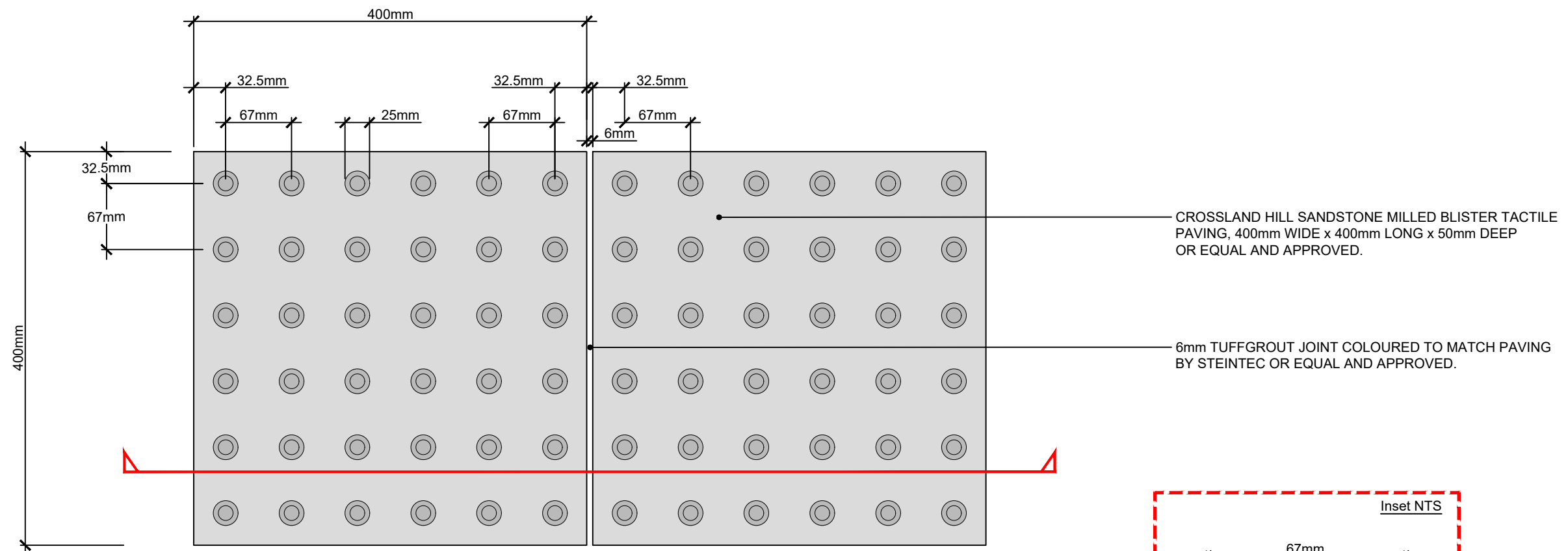
DRAWING NUMBER:

LD704

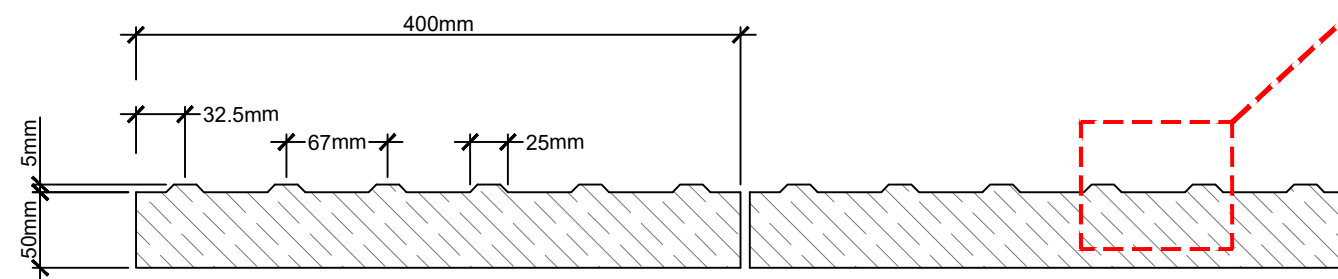
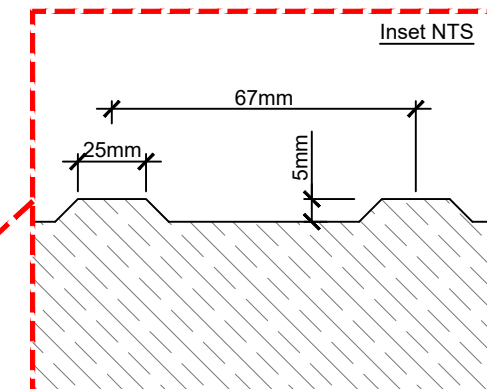
REVISION:

P02

ORIGINAL A3 SIZE SHEET



**07a** DETAIL PLAN OF TACTILE PAVING  
SCALE 1:5 @ A3



**07b** SECTION THROUGH TACTILE PAVING  
SCALE 1:5 @ A3

LANDSCAPE ARCHITECT:



The Threshing Barn  
Bignell Park Barns  
Chesterton  
Oxfordshire  
OX26 1TD

Tel: 01869 249776  
Fax: 01869 327513  
Email: mail@appliedlandscape.co.uk

© 2021 Applied Landscape Design Limited. All rights reserved.

P02	STAGE 4 ISSUE: EMPLOYERS REQUIREMENTS	07.05.21
P01	FIRST ISSUE FOR INFORMATION	19.02.21
Rev.	Update	Date

PROJECT:

KXC: BUILDING S3 PUBLIC REALM

CLIENT:

KCCGPL

drawn:

HKM

scale:

1:5 @ A3

status:

INFORMATION

checked:

KmJ

date:

19.02.21

xref file ref:

ALD854\_LDbase

DRAWING TITLE:

HARDWORKS DETAIL  
- TACTILE PAVING

PROJECT NO.

ALD854

DRAWING NUMBER:

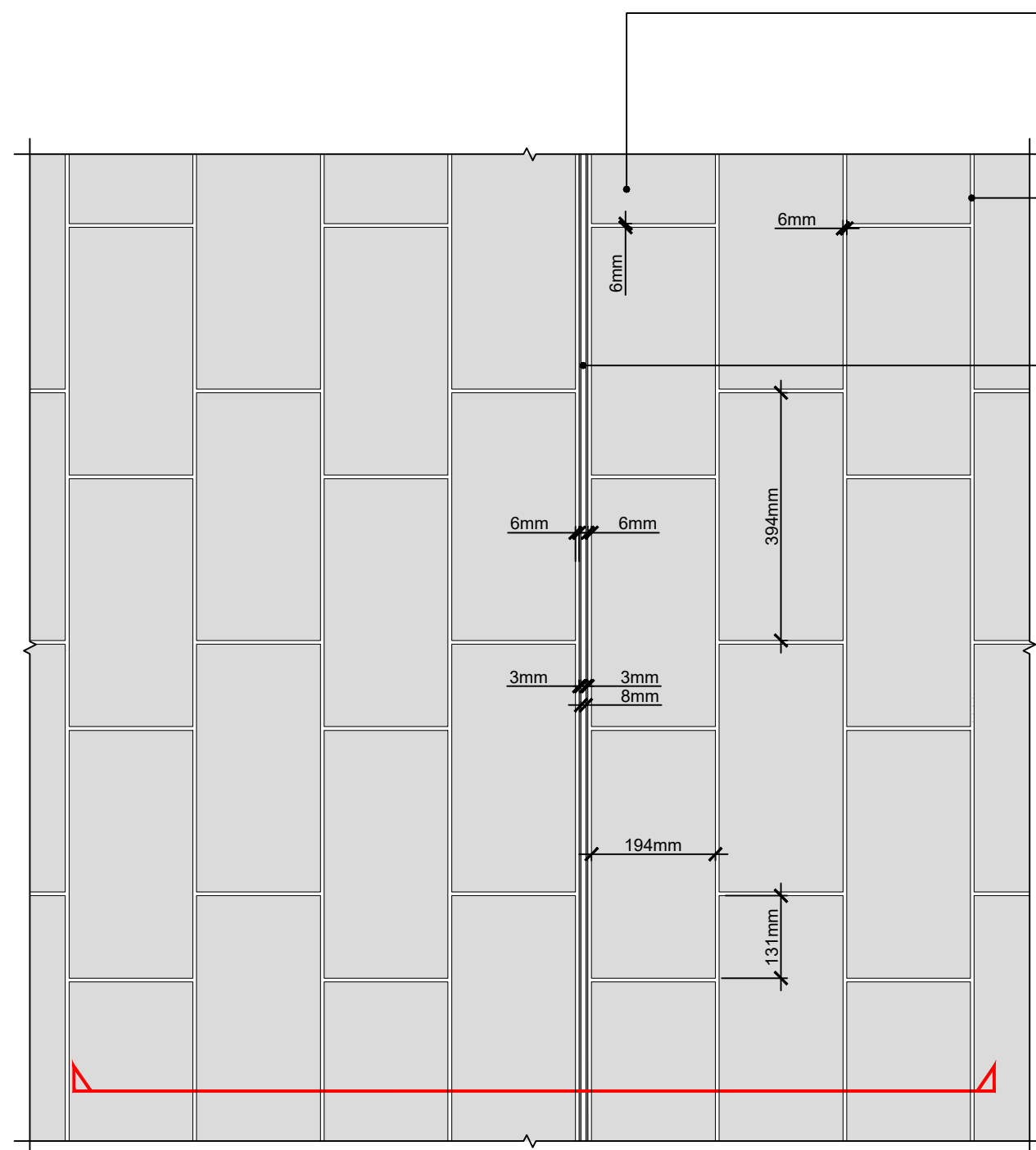
LD707

REVISION:

P02

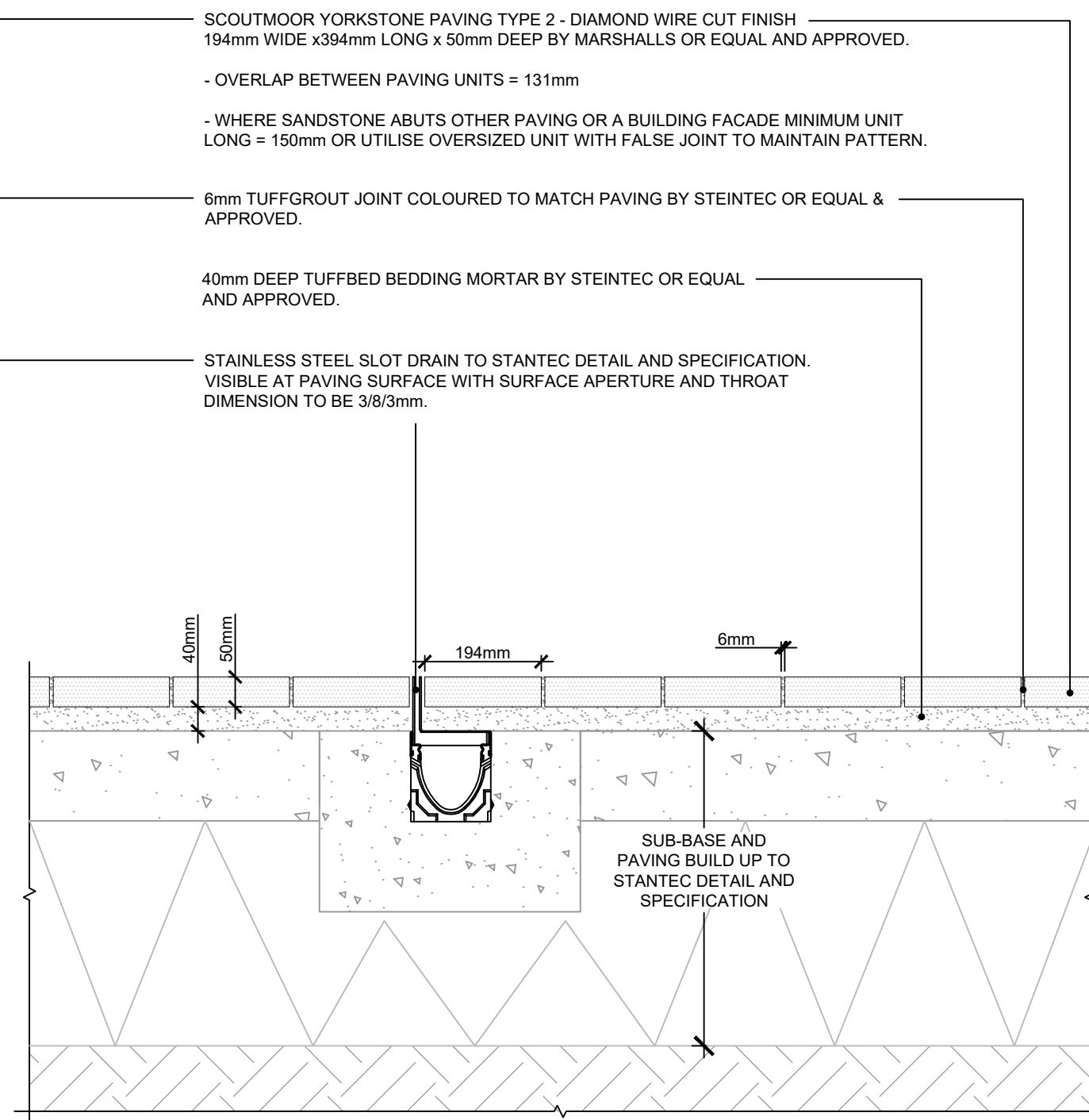
ORIGINAL A3 SIZE SHEET





10a

DETAIL PLAN OF YORKSTONE PAVING TYPE 2 / SLOT DRAIN INTERFACE  
SCALE: 1:10 @ A3



10b

SECTION THROUGH YORKSTONE PAVING TYPE 2 / SLOT DRAIN INTERFACE  
SCALE: 1:10 @ A3

LANDSCAPE ARCHITECT:



The Threshing Barn  
Bignell Park Barns  
Chesterton  
Oxfordshire  
OX26 1TD

Tel: 01869 249776  
Fax: 01869 327513  
Email: mail@appliedlandscape.co.uk

© 2021 Applied Landscape Design Limited. All rights reserved.

Rev.	Update	Date
P02	STAGE 4 ISSUE: EMPLOYERS REQUIREMENTS	07.05.21
P01	FIRST ISSUE FOR INFORMATION	19.02.21

PROJECT:

KXC: BUILDING S3 PUBLIC REALM

CLIENT:

KCCGPL

drawn:

HKM

scale:

1:10 @ A3

status:

INFORMATION

checked:

KmJ

date:

19.02.21

xref file ref:

ALD854\_LDbase

DRAWING TITLE:

HARDWORKS DETAIL  
- SLOT DRAIN / YORKSTONE  
PAVING TYPE 2 INTERFACE

PROJECT NO.

ALD854

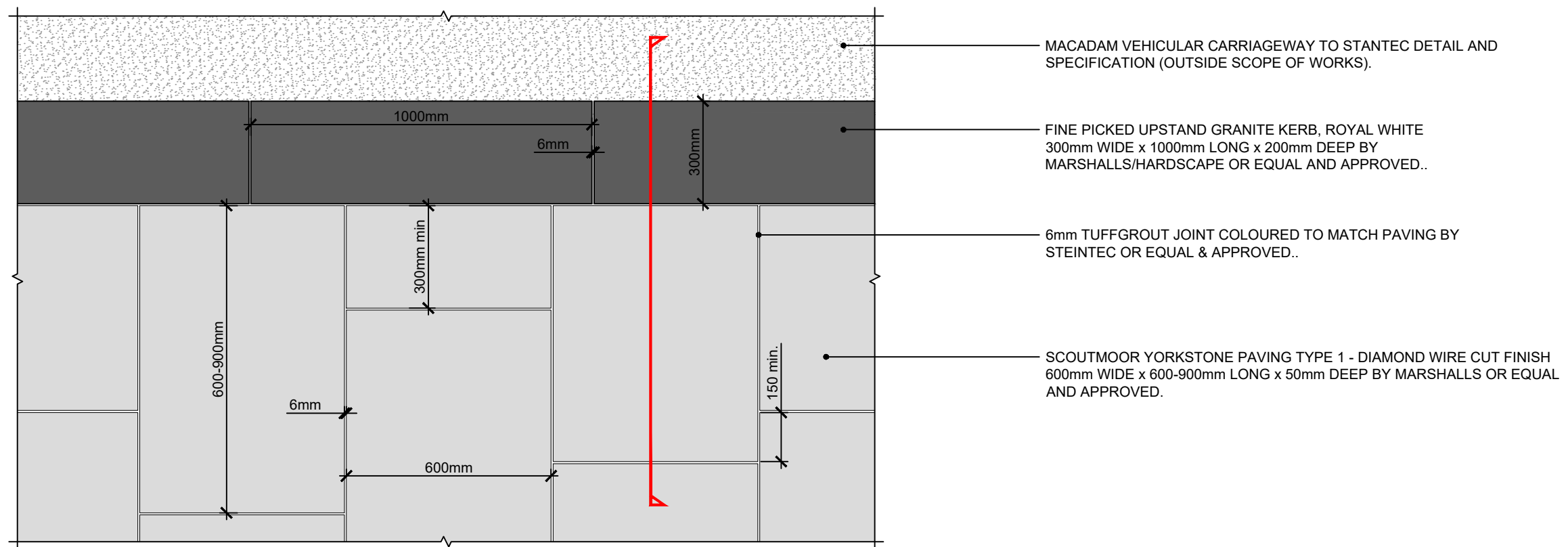
DRAWING NUMBER:

LD710

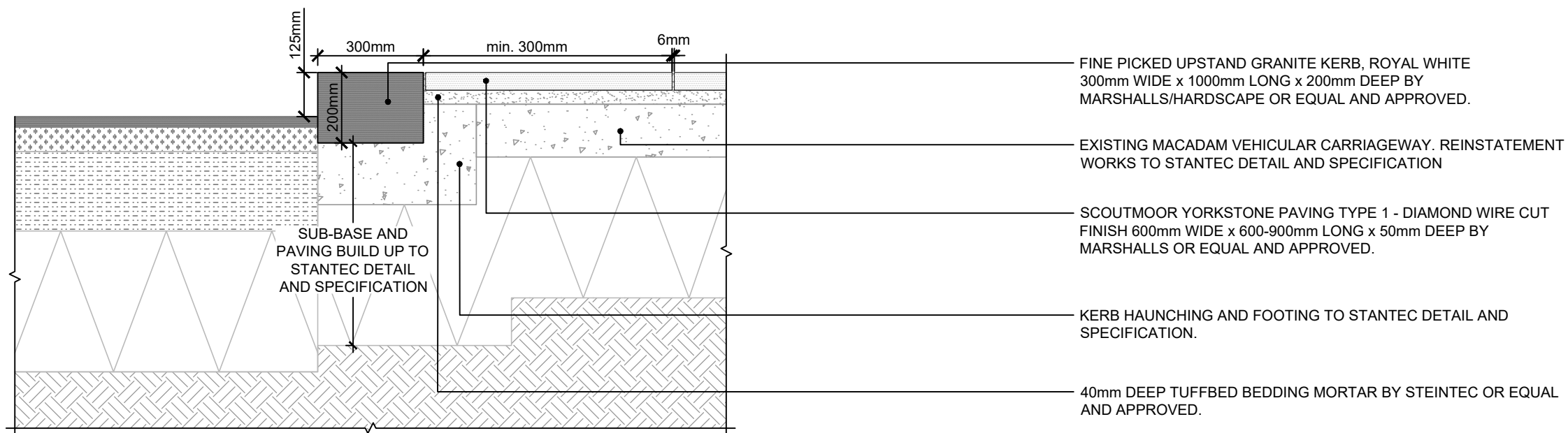
REVISION:

P02

ORIGINAL A3 SIZE SHEET

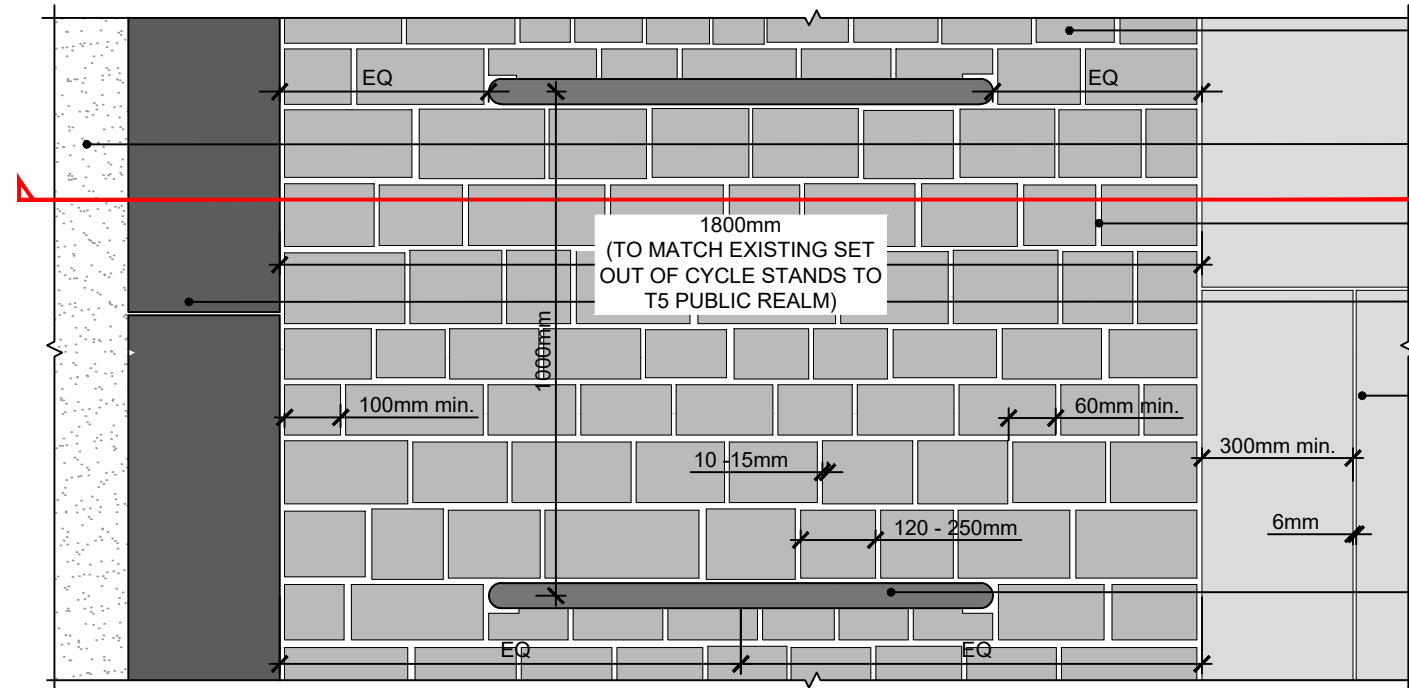


**13a** DETAIL PLAN OF YORKSTONE PAVING TYPE 1 INTERFACE WITH KERB  
SCALE: 1:15 @ A3



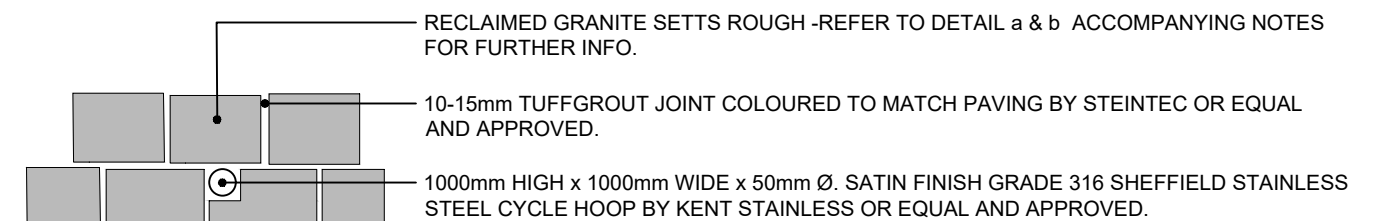
**13b** SECTION THROUGH YORKSTONE PAVING TYPE 1 INTERFACE WITH KERB  
SCALE: 1:15 @ A3



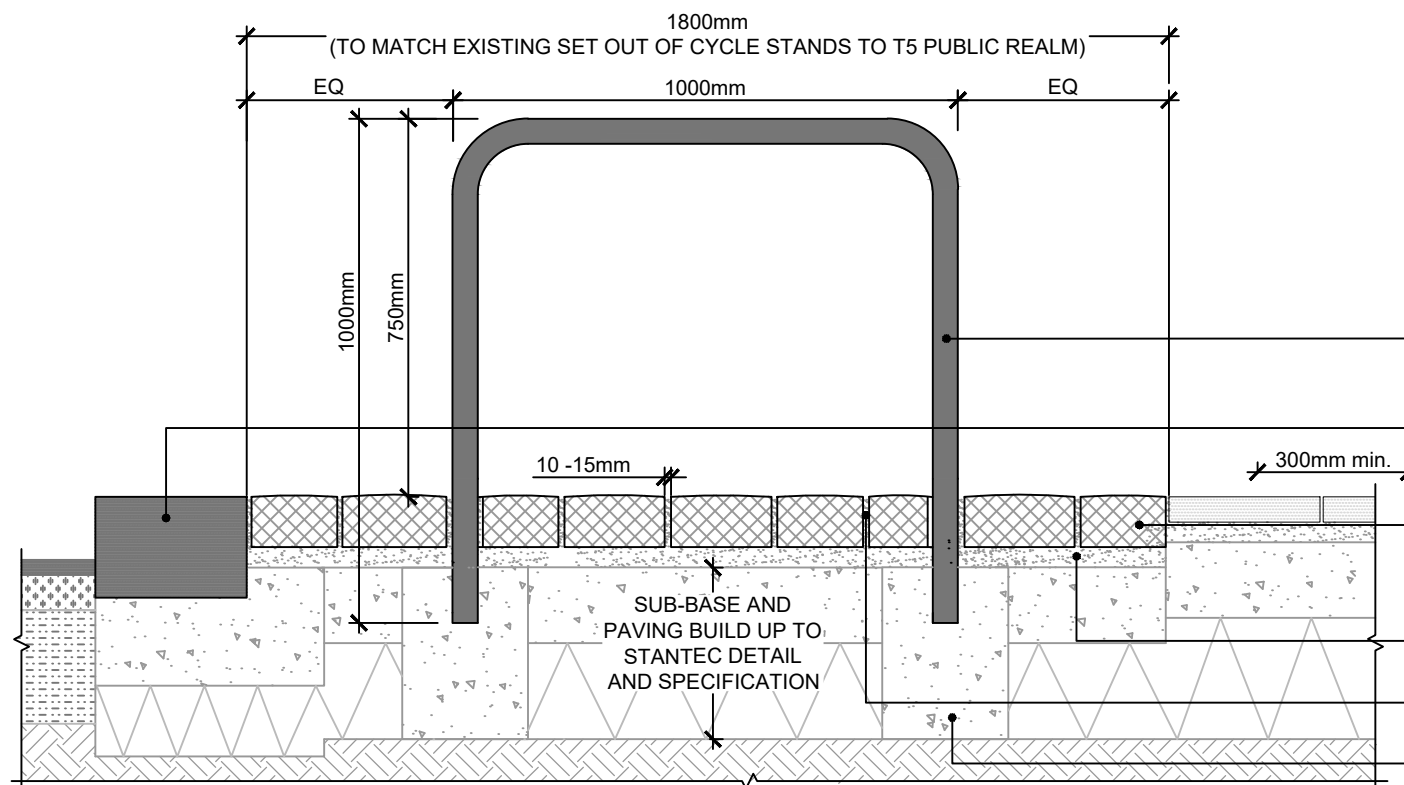


- RECLAIMED GRANITE SETTS ROUGH - SOURCED FROM SITE AND OR APPROVED SOURCE. CONTRACTOR TO CONFIRM MIX AVAILABILITY. 120-250mm LONG x 3 BAND WIDE x APPROX. 100mm DEEP. BAND 1- 90-105mm WIDE; BAND 2 - 105-125mm WIDE; BAND 3- 125-140mm WIDE
- MACADAM VEHICULAR CARRIAGEWAY TO STANTEC DETAIL AND SPECIFICATION (OUTSIDE SCOPE OF WORKS).
- 10-15mm TUFFGROUT JOINT COLOURED TO MATCH PAVING BY STEINTEC OR EQUAL AND APPROVED.
- FINE PICKED GRANITE KERB LAID FLUSH, ROYAL WHITE 300mm WIDE x 1000mm LONG x 300mm DEEP BY MARSHALLS/HARDSCAPE OR EQUAL AND APPROVED.
- SCOUTMOOR YORKSTONE PAVING TYPE 1 - DIAMOND WIRE CUT FINISH 600mm WIDE x 600-900mm LONG x 50mm DEEP BY MARSHALLS OR EQUAL AND APPROVED.
- MINIMUM OVERLAP BETWEEN PAVING UNITS = 150mm
- WHERE YORKSTONE ABUTS OTHER PAVING OR A BUILDING FACADE MINIMUM UNIT LONG = 300mm
- 1000mm HIGH x 1000mm WIDE x 50mm Ø. SATIN FINISH GRADE 316 SHEFFIELD STAINLESS STEEL CYCLE HOOP BY KENT STAINLESS OR EQUAL AND APPROVED.

**15a** DETAIL PLAN OF STAINLESS STEEL CYCLE HOOP INTERFACE WITH RECLAIMED GRANITE SETTS  
SCALE: 1:15 @ A3

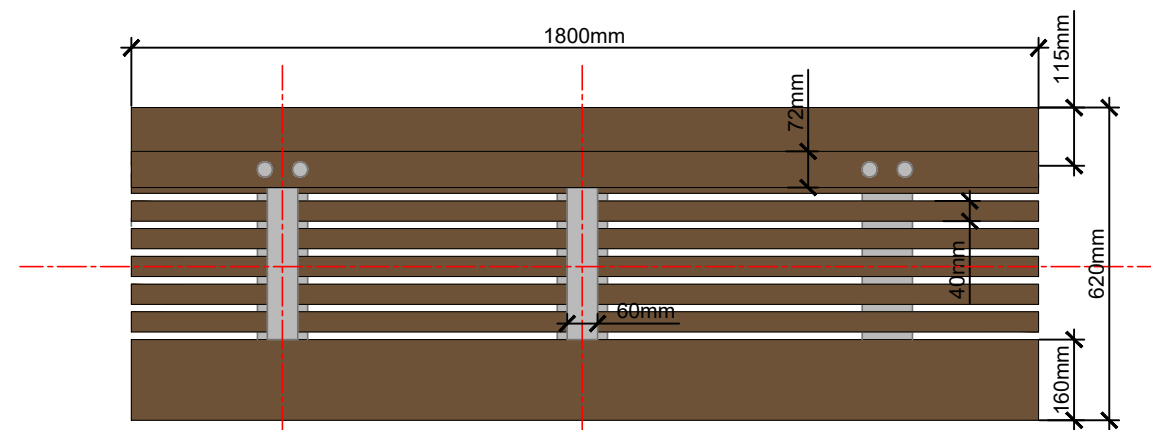


**15c** DETAIL PLAN OF STAINLESS STEEL CYCLE HOOP INTERFACE WITH RECLAIMED GRANITE SETTS  
SCALE: 1:15 @ A3

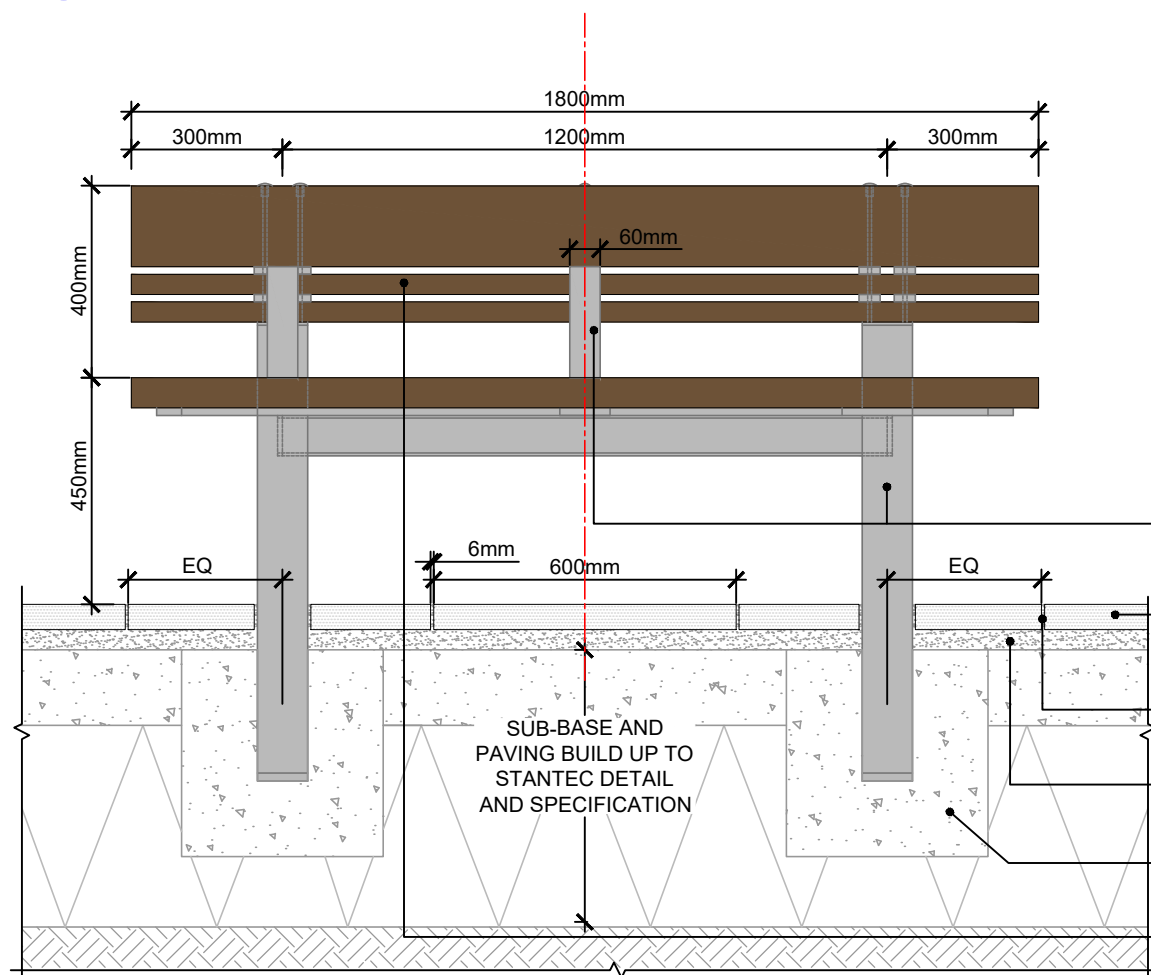


- 1000mm HIGH x 1000mm WIDE x 50mm Ø. SATIN FINISH GRADE 316 SHEFFIELD STAINLESS STEEL CYCLE HOOP BY KENT STAINLESS OR EQUAL AND APPROVED.
- FINE PICKED GRANITE KERB LAID FLUSH, ROYAL WHITE 300mm WIDE x 1000mm LONG x 300mm DEEP BY MARSHALLS/HARDSCAPE OR EQUAL AND APPROVED.
- RECLAIMED GRANITE SETTS ROUGH - SOURCED FROM SITE AND OR APPROVED SOURCE. CONTRACTOR TO CONFIRM MIX AVAILABILITY. 120-250mm LONG x 3 BAND WIDE x APPROX. 100mm DEEP. BAND 1- 90-105mm WIDE; BAND 2 - 105-125mm WIDE; BAND 3- 125-140mm WIDE
- 40mm DEEP TUFFBED BEDDING MORTAR BY STEINTEC OR EQUAL AND APPROVED.
- 10-15mm TUFFGROUT JOINT COLOURED TO MATCH PAVING BY STEINTEC OR EQUAL AND APPROVED.
- CYCLE HOOP FOUNDATIONS TO STANTEC DETAILS AND SPECIFICATION.

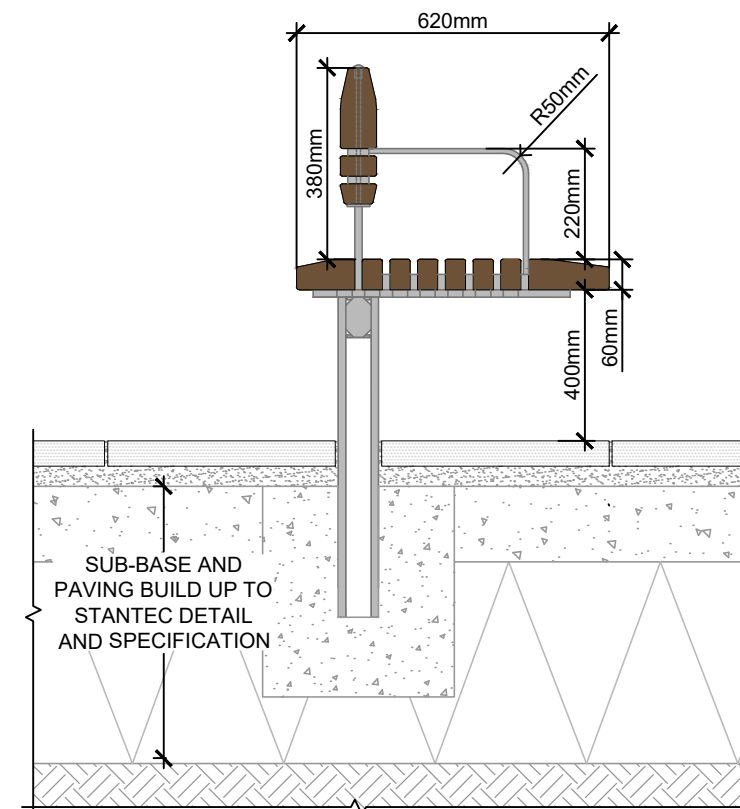
**15b** SECTION THROUGH STAINLESS STEEL CYCLE HOOP INTERFACE WITH RECLAIMED GRANITE SETTS  
SCALE: 1:15 @ A3



**17a** PLAN OF WIESBADEN BENCH  
SCALE: 1:15 @ A3



**17b** LONG SECTION THROUGH WIESBADEN BENCH INTERFACE WITH YORKSTONE PAVING  
1:15 @ A3



**17c** SHORT SECTION THROUGH WIESBADEN BENCH  
SCALE: 1:15 @ A3

**NOTES:**  
-MANUFACTURER TO CONFIRM BENCH SUPPORTS, ARMREST AND FIXING LOCATIONS RELATIVE TO OVERALL LENGTH OF BENCH.  
- REFER TO MICHOW & SOHN SHOP DRAWINGS FOR FULL BENCH DETAILS AND FINISHES.

- BENCH SUPPORTS, FIXINGS & ARMRESTS TO MANUFACTURERS DETAIL AND SPECIFICATION. TO BE POLYESTER POWDER COATED WITH SITEWIDE COLOUR RAL 9023 PEARL DARK GREY
- SCOUTMOOR YORKSTONE PAVING TYPE 1 - DIAMOND WIRE CUT FINISH 600mm WIDE x 600-900mm LONG x 50mm DEEP BY MARSHALLS OR EQUAL AND APPROVED.
- 6mm TUFFGROUT JOINT COLOURED TO MATCH PAVING BY STEINTEC OR EQUAL & APPROVED.
- 40mm DEEP TUFFBED BEDDING MORTAR BY STEINTEC OR EQUAL AND APPROVED.
- CONCRETE FOUNDATION TO STANTEC DETAIL AND SPECIFICATION.
- AIR SEASONED EUROPEAN OAK 'WIESBADEN' BENCH WITH 2No. ARMRESTS AS SHOWN BY MICHOW & SOHN GMGH OR EQUAL AND APPROVED.



