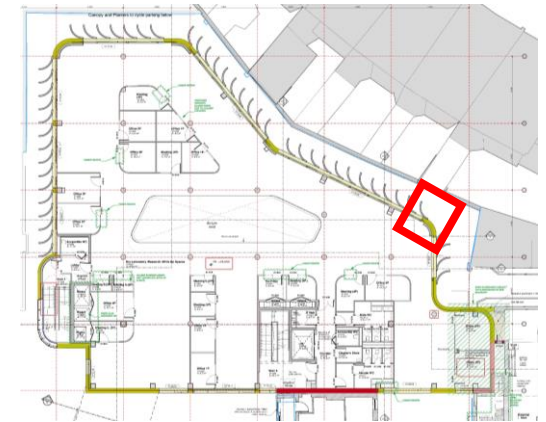


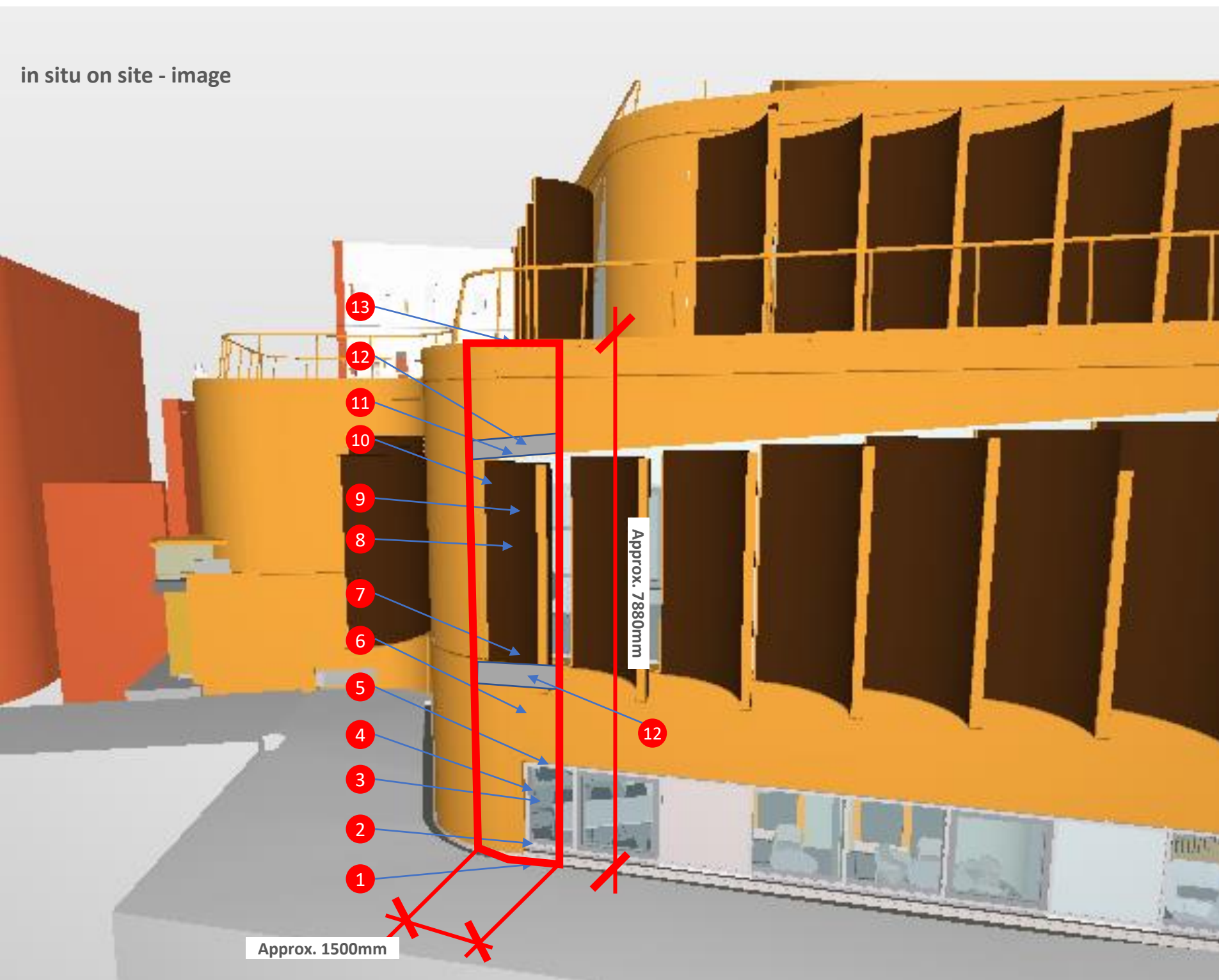
Façade mock-up

2021-08-05-Façade_Mock-up

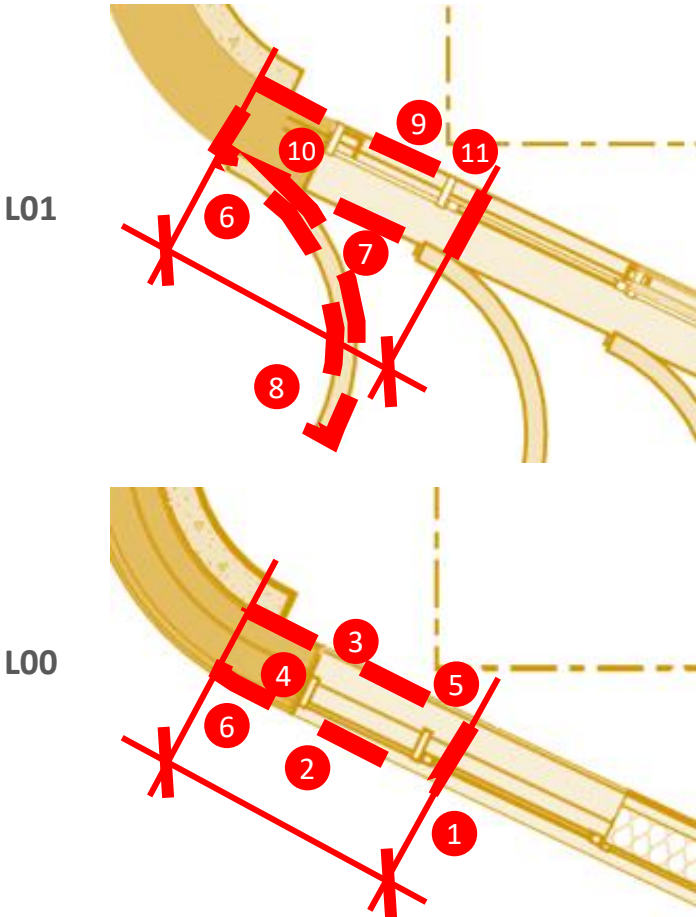


Key: Façade Elements

1. Base detail
2. CW cill
3. CW
4. Cladding jamb to CW
5. CW head
6. Standing seam cladding
7. Window cill
8. Privacy fin & brackets
9. L01 window
10. Cladding jamb to window
11. Window head
12. Stainless Steel cladding trim
13. Capping



London School of Hygiene and Tropical Medicine



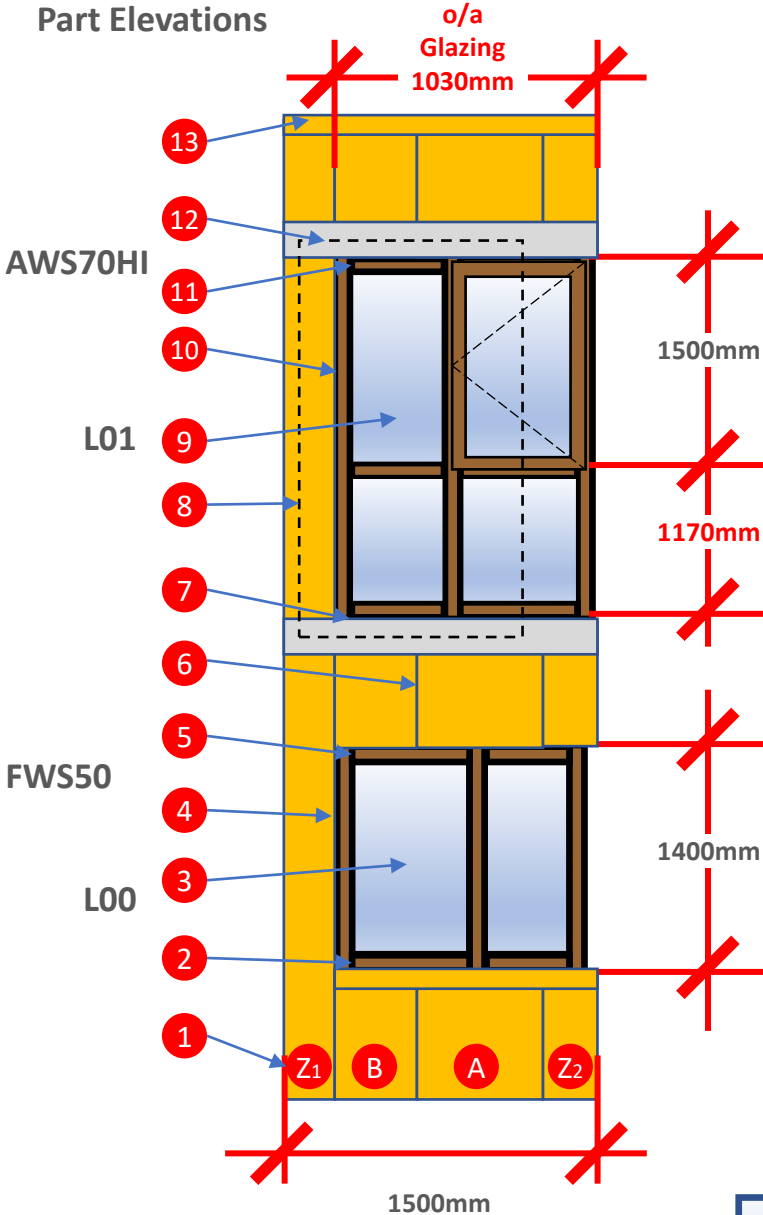
Key: Façade Elements

- 1. Base detail
- 2. CW cill
- 3. CW
- 4. Cladding jamb to CW
- 5. CW head
- 6. Standing seam cladding
- 7. Window cill
- 8. Privacy fin & brackets
- 9. L01 window
- 10. Cladding jamb to window
- 11. Window head
- 12. Stainless Steel cladding trim
- 13. Capping

Note:

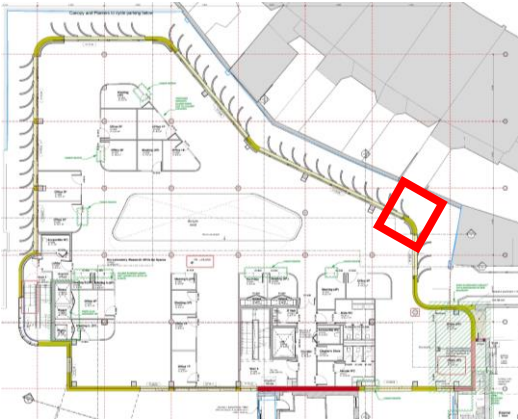
- a) Window and Curtain Wall elements will be mock up specific to evidence the system (profiles, colour interface details).
- b) Glass – Glazing in mock up will be generic clear vision glass. Glass samples will be provided separately*.

Part Elevations

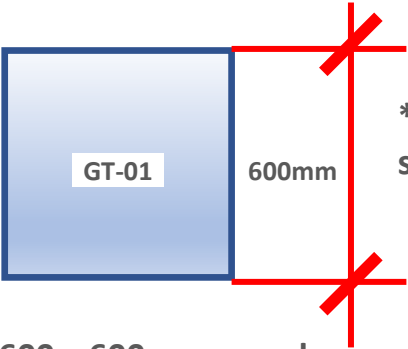


Façade mock-up

2021-08-05-Façade_Mock-up



Standing Seam Cladding
A – 600mm
B – 430mm
Z1 – 250mm
Z2 – 220mm



*Proposed Façade Mock-up, supporting samples:

Glass types: 600 x 600mm samples

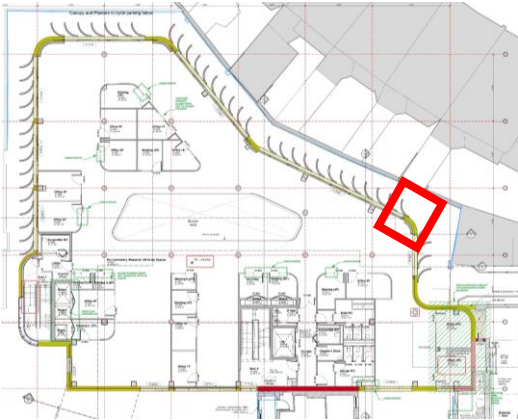
- GT01 – DGU Clear outer, clear inner panes
- GT02 – DGU 100% opaque coating
- GT03 – DGU 30 minute Fire Rated, Clear outer, clear inner panes
- GT04 – DGU 30 minute Fire Rated, 100% opaque coating

Materials

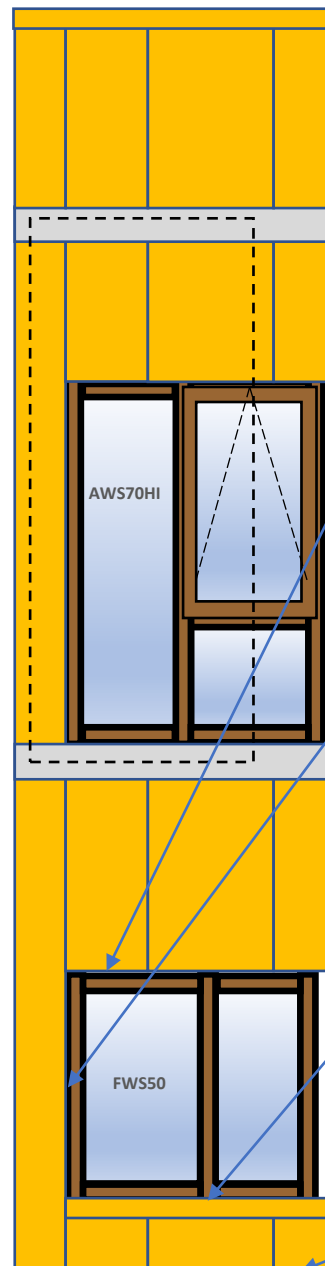


Façade mock-up

2021-08-05-Façade_Mock-up



Standing Seam Cladding materials
x – TECU© Brass KME
y – Aperam Uginox Top (stainless steel)



Cladding jamb to CW

0.7mm KME 'TECU Brass' Jamb Flashing on 0.8mm Galvanised Reveal Support Angle

CW

Frame: Schuco AWS70HI thermally broken window system

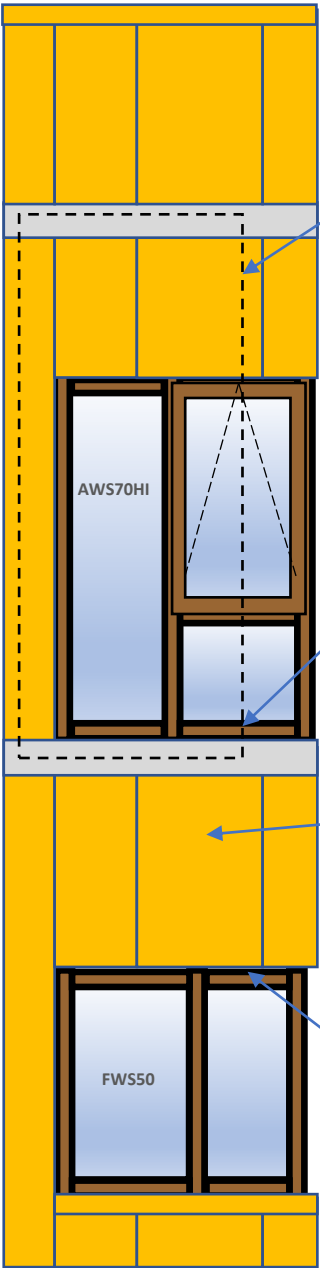
Glazing: Double Glazed Unit. Clear, non-fire rated & Clear Fire Rated. Opaque non-Fire Rated & Opaque Fire Rated

CW Sill

0.7mm KME 'TECU Brass' Head Flashing on 0.8mm Galvanised Cavity Barrier

Base Detail

Rendered High Impact Insulated Board



Privacy Fin & Brackets

1.5mm Tecu Brass Sheet with Aluminium Extrusions & Plates to be PPC to RAL Colour 9006. Steel brackets to be galvanised.

Window Cill

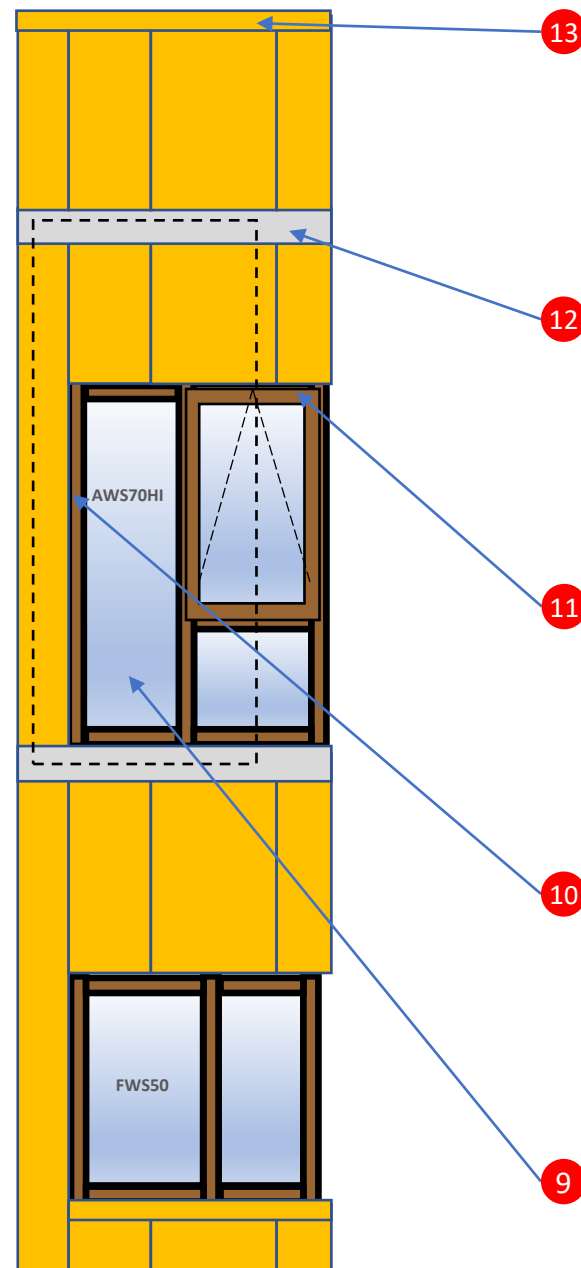
0.7mm KME 'TECU Brass' Cill on 0.8mm Galvanised Cavity Barrier

Standing Seam Cladding

0.7mm KME 'TECU Brass' on 0.7mm Horizontal D32 Trapezoidal Galvanised Steel Deck

CW Head

0.7mm KME 'TECU Brass' Head Flashing on 0.8mm Galvanised Cavity Barrier



Capping

0.7mm KME 'TECU Brass' Angled Standing Seam Capping on 0.8mm continuous galvanised drip

Stainless Steel Cladding Trim

0.5mm Aperam 'Ugitop' Stainless Steel feature channel on 0.8mm galvanised carrier panel

Window Head

0.5mm Aperam 'Ugitop' Stainless Steel Head Flashing on 1mm galvanised angled bracket

Cladding Jamb to Window

0.7mm KME 'TECU Brass' Flashing on 0.8mm galvanised plate

L01 Window

Frame: Schuco AWS70HI thermally broken window system

Glazing: Double Glazed Unit. Clear, non-fire rated & Clear Fire Rated. Opaque non-Fire Rated & Opaque Fire Rated.