

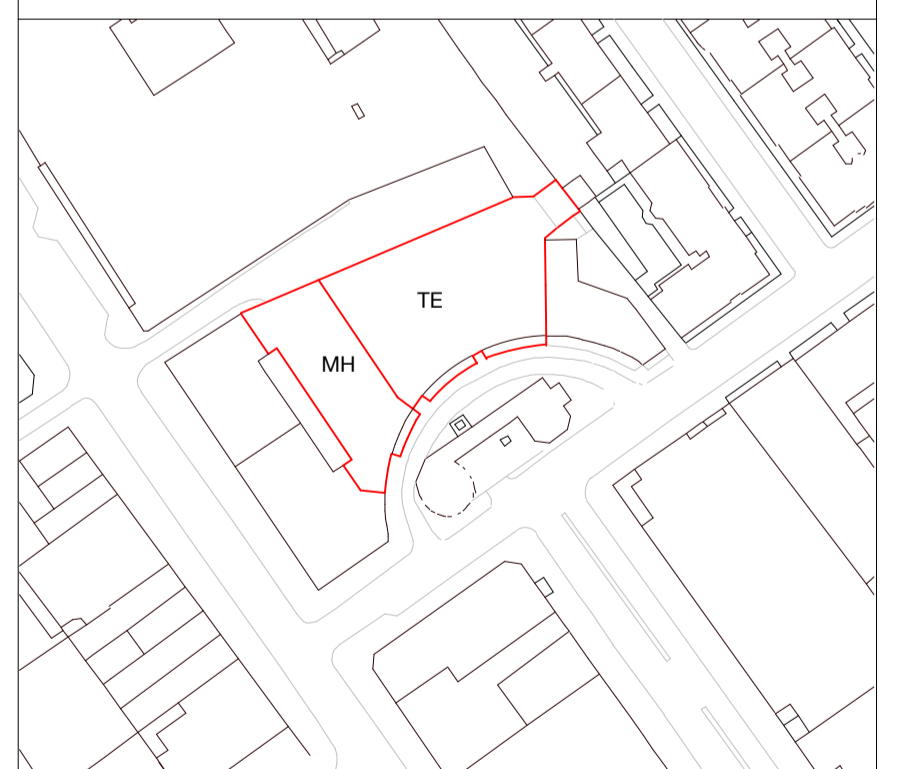
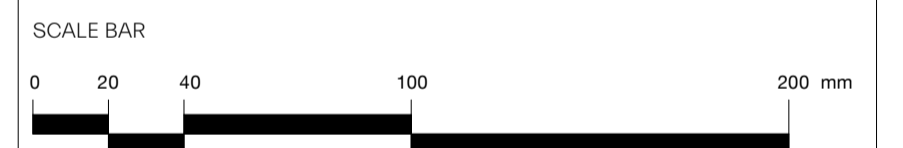
**NOTES:**  
 SUPPLEMENTARY INFORMATION:  
 These drawings reflect the current position of the scheme development at RIBA Stage 2, they should be read in conjunction with the following information prepared by Morris+Company:  
 - Chenies St Design and Access Statement  
 These should also be read in conjunction with the following information, prepared by other consultants, in order to demonstrate a coordinated design proposal at RIBA Stage 2:  
 - Structural Engineers Drawings and Report, (Haynes Tillett Steel)  
 - MEP Engineers Drawings and Reports, (Thornston Reynolds)  
 - Civils Drainage Drawings and Report, (Haynes Tillett Steel)  
 - Acoustic Report (Temple Group)  
 All plan, elevation and sectional drawn information are based on the 2D survey drawings by Plowman Craven 29/06/18. All existing plans, elevations and sectional drawn information are based on the survey drawings by Plowman Craven 29/06/18.

**Key  
 Assembly - Bay Studies**

1. Anodised/PPC aluminium scalloped panel
2. Double glazed window
3. Anodised/PPC aluminium frame
4. Anodised/PPC scalloped balustrade
5. Anodised/PPC cornice
6. GRC panel type 1
7. GRC panel type 2
8. Perforated anodised/PPC aluminium panel (natural ventilation)
9. GRC panel type 3
10. Anodised/PPC aluminium frame
11. Brickwork (to match existing - salvaged)
12. Existing facade (retained and repaired)
13. Glazed door
14. Anodised/PPC aluminium fin
15. Perforated scalloped anodised/PPC aluminium screen
16. Scalloped GRC panel
17. Existing windows replaced to match existing in style; aluminium frame and double glazed unit

revision	date	amendment
P01	160721	Planning

Note - scale bar applies to 1:20 only



**MORRIS+COMPANY**  
 Unit 7, 16-24 Underwood Street, London N1 7JQ  
 Tel: +44 (0)20 7566 7440 Fax: +44 (0)20 7014 3119  
 www.morrisandcompany.com

- Do not scale from this drawing
- All dimensions to be checked on site by the Contractor
- And such dimensions to be their responsibility
- Report all drawing errors and omissions to the Architect
- All dimensions in millimeters unless noted otherwise
- If in doubt ask Contract Administrator

job title  
**NORTH CRESCENT**  
 drawing title /  
**ASSEMBLY - MEWS EXTENSION**

status	For information						
date	16/07/21						
scale	As indicated						
projec	originator	zone	level	typ	role	number	status - revision
A300	MCO	TE	ZZ	DR	A	06402	P01

1  
06402  
CRESCENT BAY - DETAIL PLAN  
1 : 20

2  
06402  
PROPOSED NORTH ELEVATION  
1 : 100

3  
06402  
MEWS BAY - NORTH ELEVATION  
1 : 20

4  
06402  
PROPOSED SECTION - BAY  
1 : 20