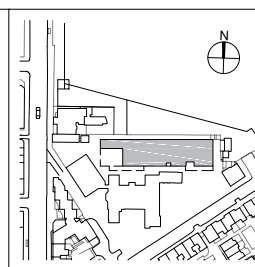
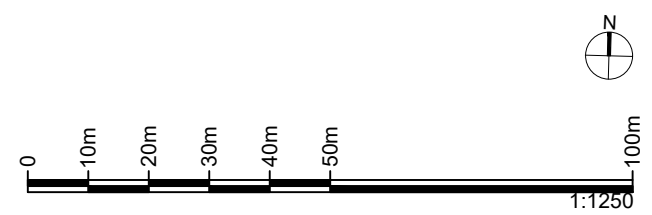

 Hatched green area indicates:  
 Limits of Deviation for the HS2 Act.  
 Land to be used for HS2 purposes

					<p>HS2 accepts no responsibility for any circumstances which arise from the reproduction of this document after alteration, amendment or abbreviation or if it is issued in part or issued incompletely in any way.</p> <p>© Crown Copyright and database right 2020. All rights reserved.          Ordnance Survey Licence number 100049150</p>
C01	Contract Issue Limits of Deviation hatched area added.	GR	JSN	APB	<p>© Crown Copyright material is reproduced with the permission of Land Registry under delegated authority from the Controller of HMSO.</p>
P1.2	Site boundary amended. OS extract extended to the South	GR	JSN	APB	<p>This material was last updated on 2020 and may not be copied, distributed, sold or published without the formal permission of Land Registry. Only an official copy of a title plan or register obtained from the Land Registry may be used for legal or other official purposes.</p>
P1.1	Initial Issue	GR	JSN	APB	
Rev	Description	Drawn	Checked	Approved	Con App

Legends/Notes:



**HS2**  
 OFFICIAL  
 Registered in England  
 Registration No. 06791686  
 Registered office:  
 2 Snow Hill, Queensway,  
 Birmingham, B4 6GA

<b>Project/Contract</b> Proposed Maria Fidelis CSC & Site Accommodation, London, NW1 2HR 1CP01		<b>Creator/Originator</b> MDS		<b>Sub-Originator</b> FBM	
<b>Zone</b> SS08	<b>Work Package Description</b> SL23	<b>Discipline/Function</b> AR		<b>System Description</b> DSP	
<b>Drawing Title</b> Site Location Plan - Existing		<b>Drawn by</b> GR	<b>Checked by</b> JSN	<b>Approved by</b> APB	<b>Date</b> 29/07/2021
<b>Scale</b> 1:1250	<b>Size</b> A3	<b>Stage</b> 3	<b>Suitability</b> C		
<b>Drawing No.</b> 1CP01-MDS_FBM-AR-DSP-SS08_SL23_GF-000002					<b>Rev.</b> C01