



Cobourg Street The Exmouth Arms Proposed Site Multiuse Hall Hampstead Road

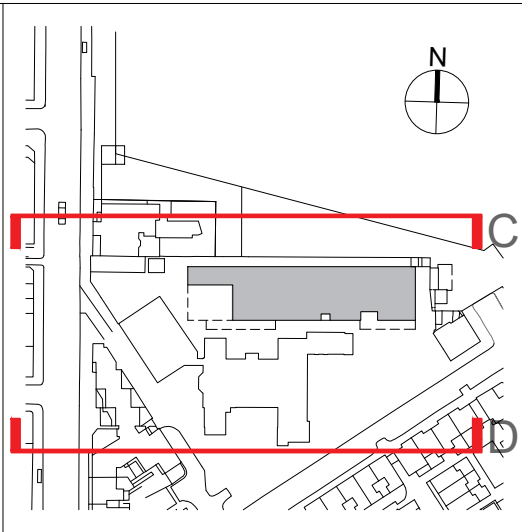
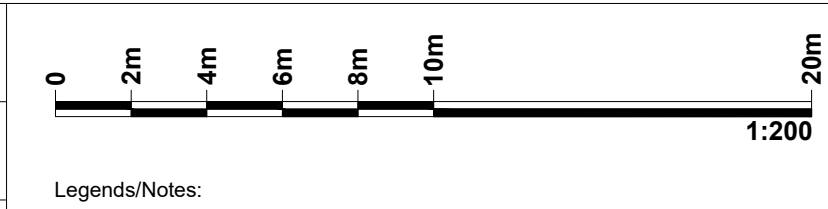
03 North Elevation C
1:200@A1



Hampstead Road Multiuse Hall Managed Workspace Proposed Site The Exmouth Arms

04 South Elevation D
1:200@A1

| | | | | | |
|------|--------------------|-------|---------|----------|--|
| | | | | | HS2 accepts no responsibility for any circumstances which arise from the reproduction of this document after alteration, amendment or abbreviation or if it is issued in part or issued incompletely in any way. |
| | | | | | © Crown Copyright and database right 2020. All rights reserved. Ordnance Survey Licence number 100043150 |
| C01 | Construction Issue | GR | JSN | APB | © Crown Copyright material is reproduced with the permission of Land Registry under delegated authority from the Controller of HMSO. |
| P1.2 | Tags updated | GR | JSN | APB | This material was last updated on 2020 and may not be copied, distributed, sold or published without the formal permission of Land Registry. Only an official copy of a title plan or register obtained from the Land Registry may be used for legal or other official purposes. |
| P1.1 | Initial Issue | GR | JSN | APB | |
| Rev | Description | Drawn | Checked | Approved | Con App |



HS2

OFFICIAL

Registered in England
Registration No. 06791686
Registered office:
2 Snow Hill, Queensway,
Birmingham, B4 6GA

| | | | | | |
|---|----------------------------------|---------------------------|-------------------|---------------------------|--------------------|
| Project/Contract Proposed Maria Fidelis CSC & Site Accommodation, London, NW1 2HR 1CP01 | | Creator/Originator MDS | | Sub-Originator FBM | |
| Zone SS08 | Work Package Description SL23 | Discipline/Function AR | | System Description DEL | |
| Drawing Title North & South Context Elevations | | Drawn by GR | Checked by JSN | Approved by APB | Date 29/07/2021 |
| | | Scale 1:200 | Size A1 | Stage 3 | Suitability C |
| Drawing No. 1CP01-MDS_FBM-AR-DEL-SS08_SL23-000005 | | | | | Rev. C01 |