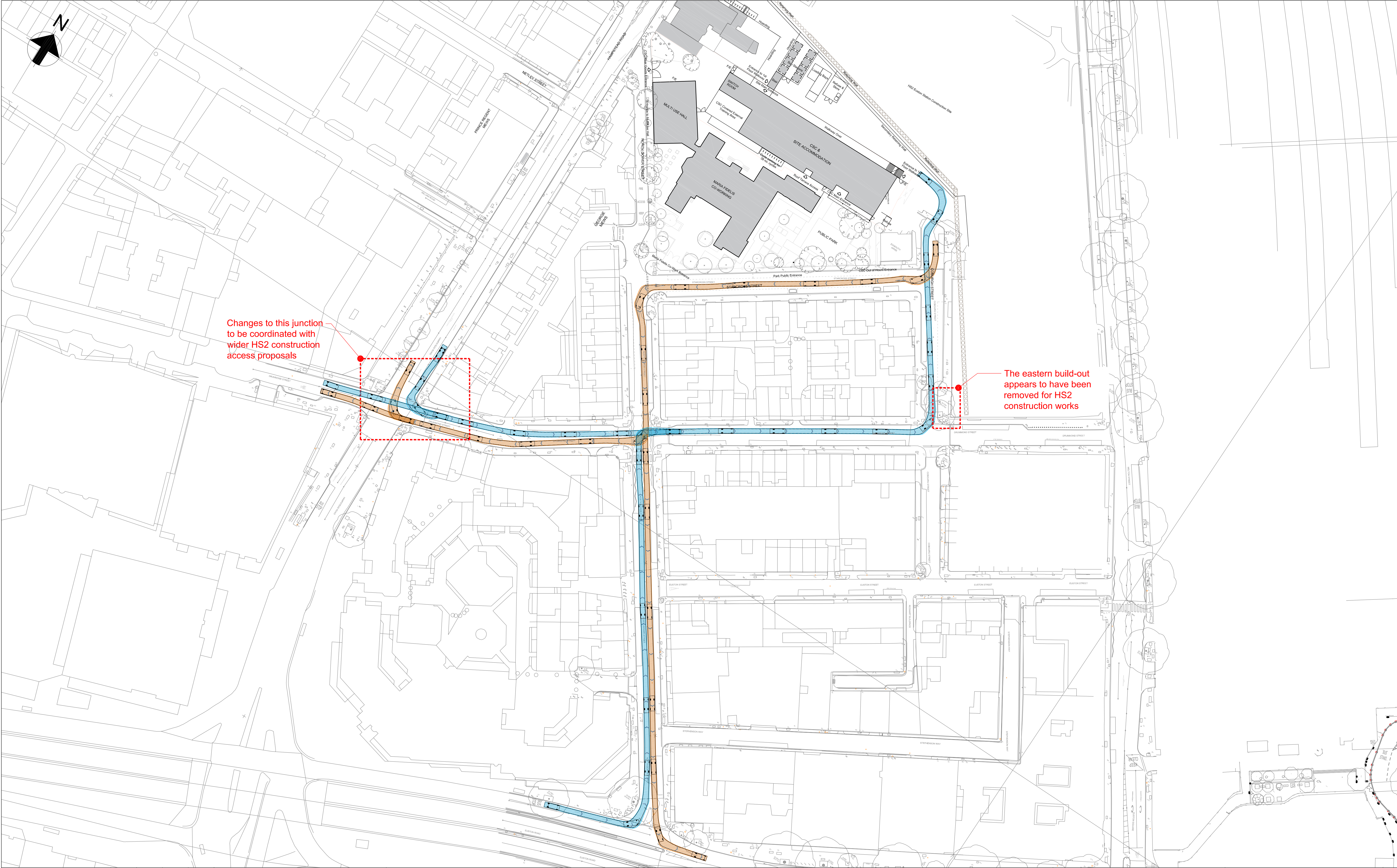


Appendix A – Swept Path Analysis

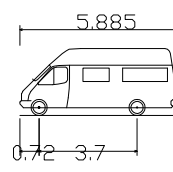


Changes to this junction
to be coordinated with
wider HS2 construction
access proposals

The eastern build-out
appears to have been
removed for HS2
construction works

						HS2 accepts no responsibility for any circumstances which arise from the reproduction of this document after alteration, amendment or abbreviation or if it is issued in part or issued incompletely in any way.
						© Crown Copyright and database right 2018. All rights reserved. Ordnance Survey Licence number 100049190
						© Crown Copyright material is reproduced with the permission of Land Registry under delegated authority from the Controller of HMSO.
						This material was last updated on 2018 and may not be copied, distributed, sold or published without the formal permission of Land Registry. Only an official copy of a title plan or register obtained from the Land Registry may be used for legal or other official purposes.
Rev	Description	Drawn	Checked	Con App	HS2 App	Scale with caution as distortion can occur.

Legends/Notes:



4.6t Light Van
Overall Length 5.885m
Overall Width 2.00m
Min Body Height 2.59m
Min Body Ground Clearance 2.00m
Lock to lock time 2.00s
Kerb to Kerb Turning Radius 6.00m

Note:

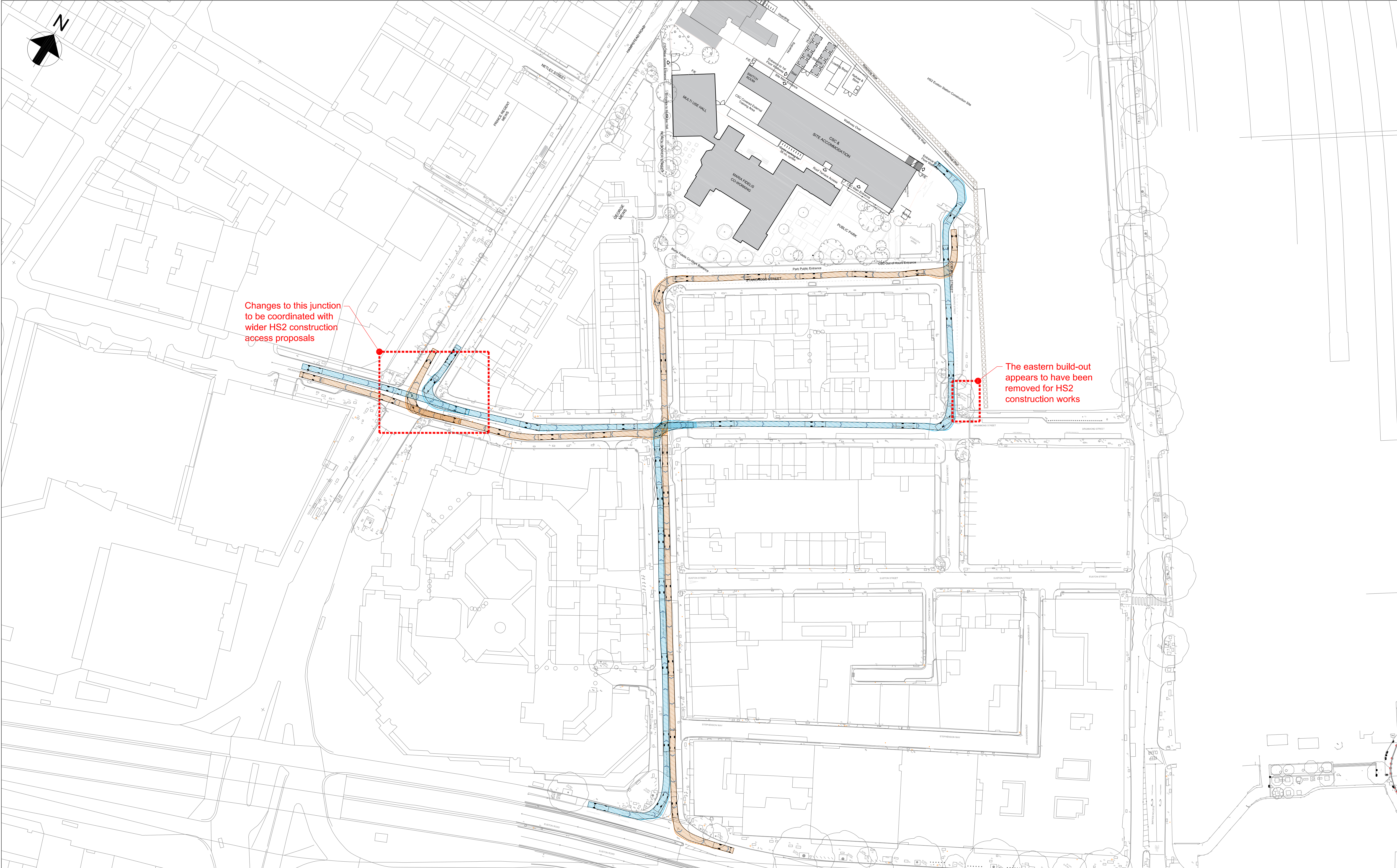
- TfL cycle lanes along Hampstead Road are not shown in this topographical survey

HS2

Registered in England
Registration No. 06791686
Registered office:
2 Snow Hill, Queensway,
Birmingham, B4 6GA

Creator/Originator
Arup

Zone	SS06 Euston Station			Project/Contract	SDSC	
Design Stage				Discipline/Function	Transport Planning	
Drawing Title	Maria Fidelis Panel Van - Operations Traffic Swept Path Analysis			Drawn	Checked	Approved
	ANW	KW	MR	Date	Scale	Size
	16/06/21	1:750	A1	Drawing No.	Rev.	
					P01	

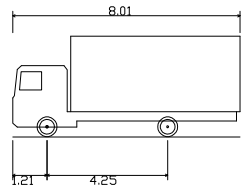


Changes to this junction
to be coordinated with
wider HS2 construction
access proposals

The eastern build-out
appears to have been
removed for HS2
construction works

						HS2 accepts no responsibility for any circumstances which arise from the reproduction of this document after alteration, amendment or abbreviation or if it is issued in part or issued incompletely in any way.
						© Crown Copyright and database right 2018. All rights reserved. Ordnance Survey Licence number 100049190
						© Crown Copyright material is reproduced with the permission of Land Registry under delegated authority from the Controller of HMSO.
						This material was last updated on 2018 and may not be copied, distributed, sold or published without the formal permission of Land Registry. Only an official copy of a title plan or register obtained from the Land Registry may be used for legal or other official purposes.
Rev	Description	Drawn	Checked	Con App	HS2 App	Scale with caution as distortion can occur.

Legends/Notes:



7.5t Box Van
Overall Length 8.010m
Overall Width 2.210m
Overall Body Height 3.556m
Min Body Ground Clearance 0.251m
Track Width 2.064m
Lock to lock time 4.90s
Kerb to Kerb Turning Radius 7.400m

Note:

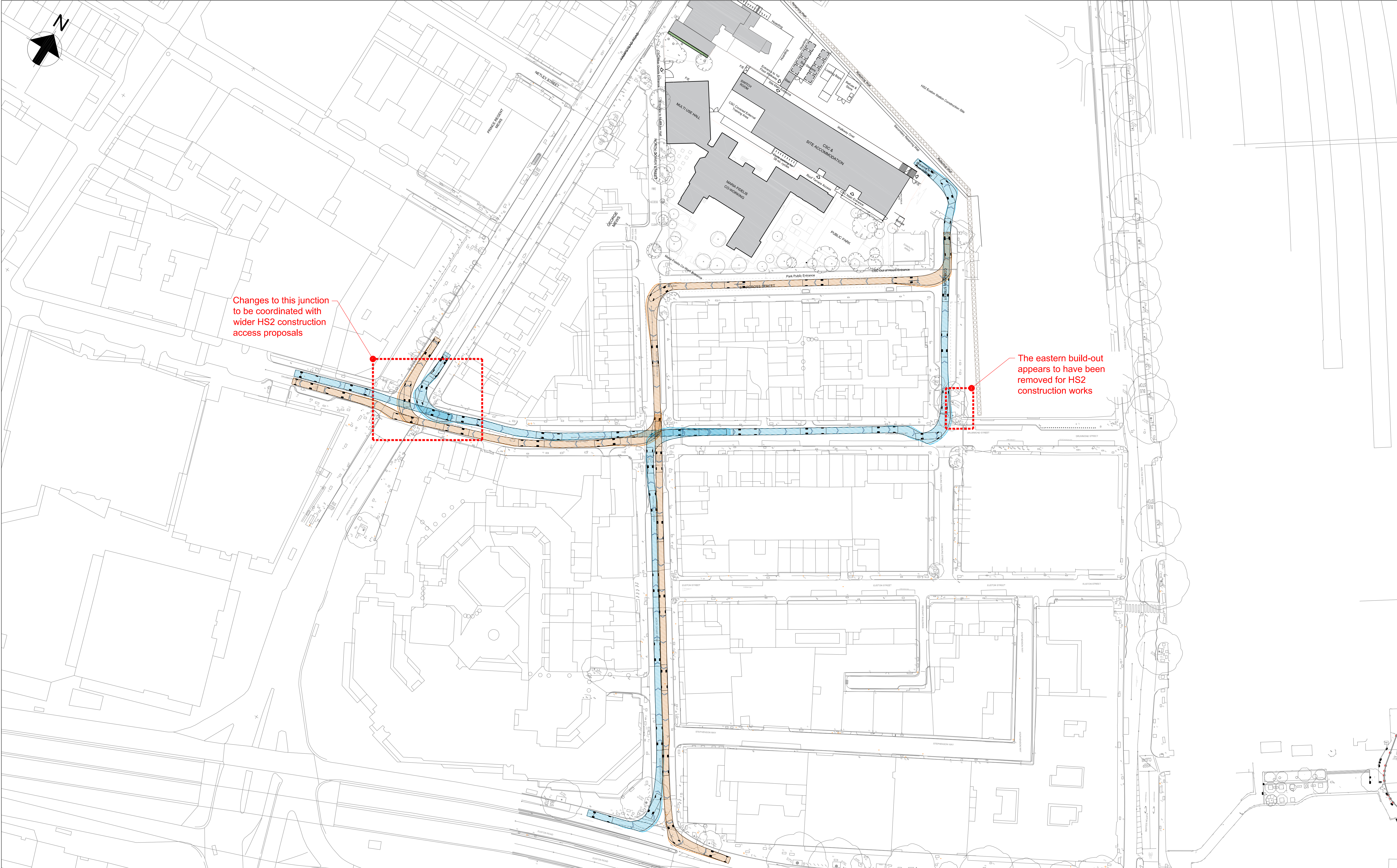
1. TfL cycle lanes along Hampstead Road are not shown in this topographical survey

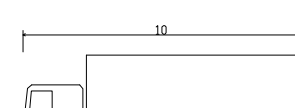
HS2

Registered in England
Registration No. 06791686
Registered office:
2 Snow Hill, Queensway,
Birmingham, B4 6GA

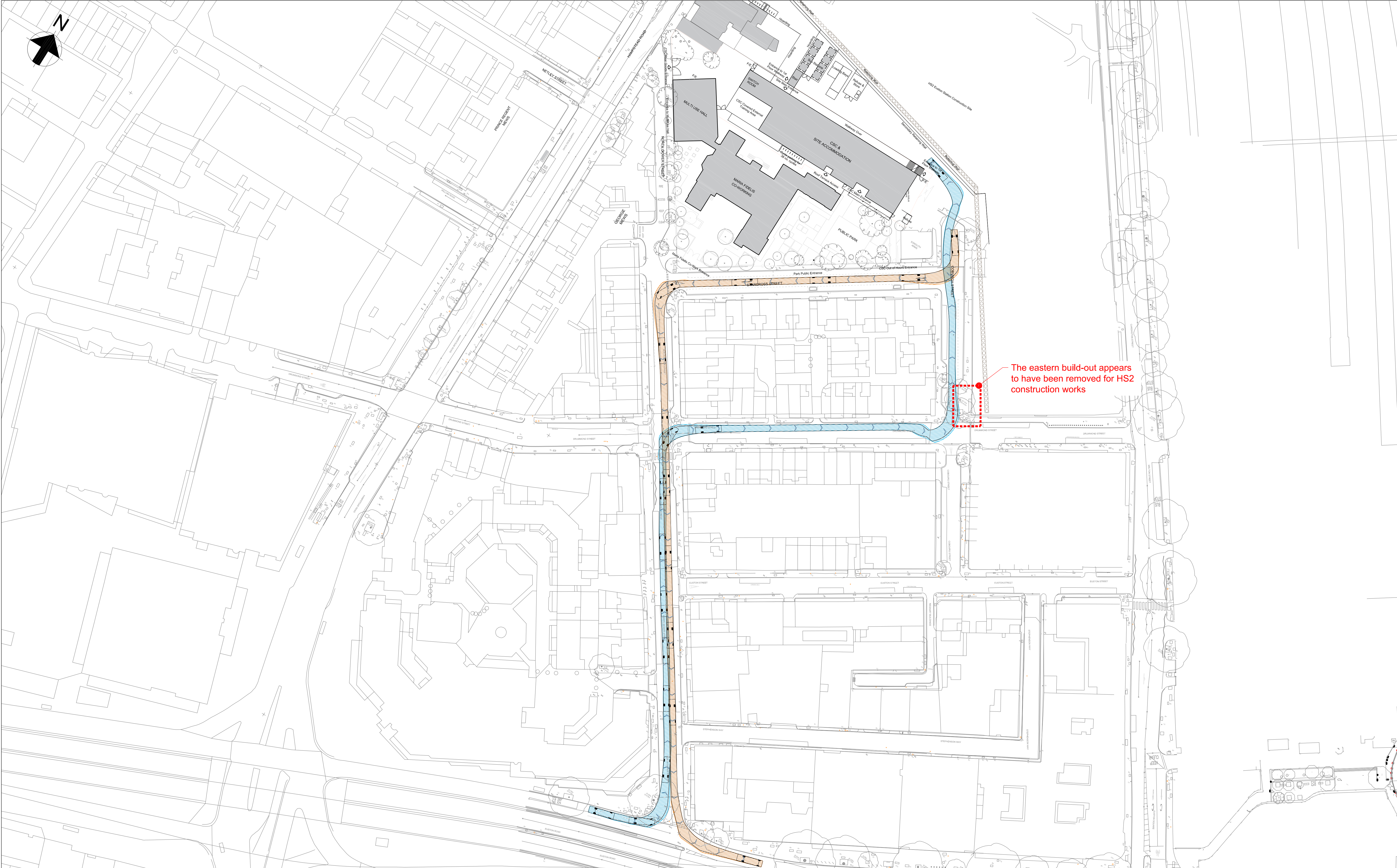
Creator/Originator
Arup

Zone	SS06 Euston Station			Project/Contract	SDSC	
Design Stage				Discipline/Function	Transport Planning	
Drawing Title	Maria Fidelis 8m Rigid - Operations Traffic Swept Path Analysis			Drawn	Checked	Approved
	ANW	KW	MR	Date	Scale	Size
	14/06/21	1:750	A1	Drawing No.	Rev.	
					P01	



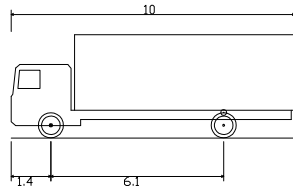
						HS2 accepts no responsibility for any circumstances which arise from the reproduction of this document after alteration, amendment or abbreviation or if it is issued in part or issued incompletely in any way.	<p>Legends/Notes:</p>  <p>ETA Design HG Rigid Vehicle (1998)</p> <table><tr><td>Overall Length</td><td>10.000m</td></tr><tr><td>Overall Width</td><td>2.400m</td></tr><tr><td>Overall Body Height</td><td>3.200m</td></tr><tr><td>Min Body Ground Clearance</td><td>2.470m</td></tr><tr><td>Track Width</td><td>2.300m</td></tr><tr><td>Lock to Lock time</td><td>11.000m</td></tr><tr><td>Kerb to Kerb Turning Radius</td><td>11.000m</td></tr></table>	Overall Length	10.000m	Overall Width	2.400m	Overall Body Height	3.200m	Min Body Ground Clearance	2.470m	Track Width	2.300m	Lock to Lock time	11.000m	Kerb to Kerb Turning Radius	11.000m	<p>Note:</p> <p>1. TfL cycle lanes along Hampstead Road are not shown in this topographical survey</p>	<div><h1>HS2</h1><p>Registered in England Registration No: 06791686 Registered office: 2 Snow Hill, Queensway, Birmingham, B4 6GA</p><p>Creator/Originator</p><p>Arup</p></div>	Zone	SS06 Euston Station			Project/Contract			SDSC																																																																																																																																																																																																																																																																																																																																																																																																																																																																																																																																																																																																																																																																																																																																																																																																																																																																																																																																																																																																																																																																																																																																																																																																																																																																																																																																																																																																																																																															
Overall Length	10.000m																																																																																																																																																																																																																																																																																																																																																																																																																																																																																																																																																																																																																																																																																																																																																																																																																																																																																																																																																																																																																																																																																																																																																																																																																																																																																																																																																																																																																																																																																													
Overall Width	2.400m																																																																																																																																																																																																																																																																																																																																																																																																																																																																																																																																																																																																																																																																																																																																																																																																																																																																																																																																																																																																																																																																																																																																																																																																																																																																																																																																																																																																																																																																																													
Overall Body Height	3.200m																																																																																																																																																																																																																																																																																																																																																																																																																																																																																																																																																																																																																																																																																																																																																																																																																																																																																																																																																																																																																																																																																																																																																																																																																																																																																																																																																																																																																																																																																													
Min Body Ground Clearance	2.470m																																																																																																																																																																																																																																																																																																																																																																																																																																																																																																																																																																																																																																																																																																																																																																																																																																																																																																																																																																																																																																																																																																																																																																																																																																																																																																																																																																																																																																																																																													
Track Width	2.300m																																																																																																																																																																																																																																																																																																																																																																																																																																																																																																																																																																																																																																																																																																																																																																																																																																																																																																																																																																																																																																																																																																																																																																																																																																																																																																																																																																																																																																																																																													
Lock to Lock time	11.000m																																																																																																																																																																																																																																																																																																																																																																																																																																																																																																																																																																																																																																																																																																																																																																																																																																																																																																																																																																																																																																																																																																																																																																																																																																																																																																																																																																																																																																																																																													
Kerb to Kerb Turning Radius	11.000m																																																																																																																																																																																																																																																																																																																																																																																																																																																																																																																																																																																																																																																																																																																																																																																																																																																																																																																																																																																																																																																																																																																																																																																																																																																																																																																																																																																																																																																																																													
						© Crown Copyright and database right 2018. All rights reserved. Ordnance Survey Licence number 100049190																																																																																																																																																																																																																																																																																																																																																																																																																																																																																																																																																																																																																																																																																																																																																																																																																																																																																																																																																																																																																																																																																																																																																																																																																																																																																																																																																																																																																																																																																								

Appendix B – Construction Swept Path Analysis



						HS2 accepts no responsibility for any circumstances which arise from the reproduction of this document after alteration, amendment or abbreviation or if it is issued in part or issued incompletely in any way.
						© Crown Copyright and database right 2018. All rights reserved. Ordnance Survey Licence number 100049190
						© Crown Copyright material is reproduced with the permission of Land Registry under delegated authority from the Controller of HMSO.
						This material was last updated on 2018 and may not be copied, distributed, sold or published without the formal permission of Land Registry. Only an official copy of a title plan or register obtained from the Land Registry may be used for legal or other official purposes.
Rev	Description	Drawn	Checked	Con App	HS2 App	Scale with caution as distortion can occur.

Legends/Notes:



FTA Design HG Rigid Vehicle (1998)
Overall Length 10.000m
Overall Width 2.500m
Overall Body Height 3.65m
Wn Body Ground Clearance 1.440m
Track Width 2.470m
Lock to lock time 3.06s
Kerb to Kerb Turning Radius 11.000m

Note:

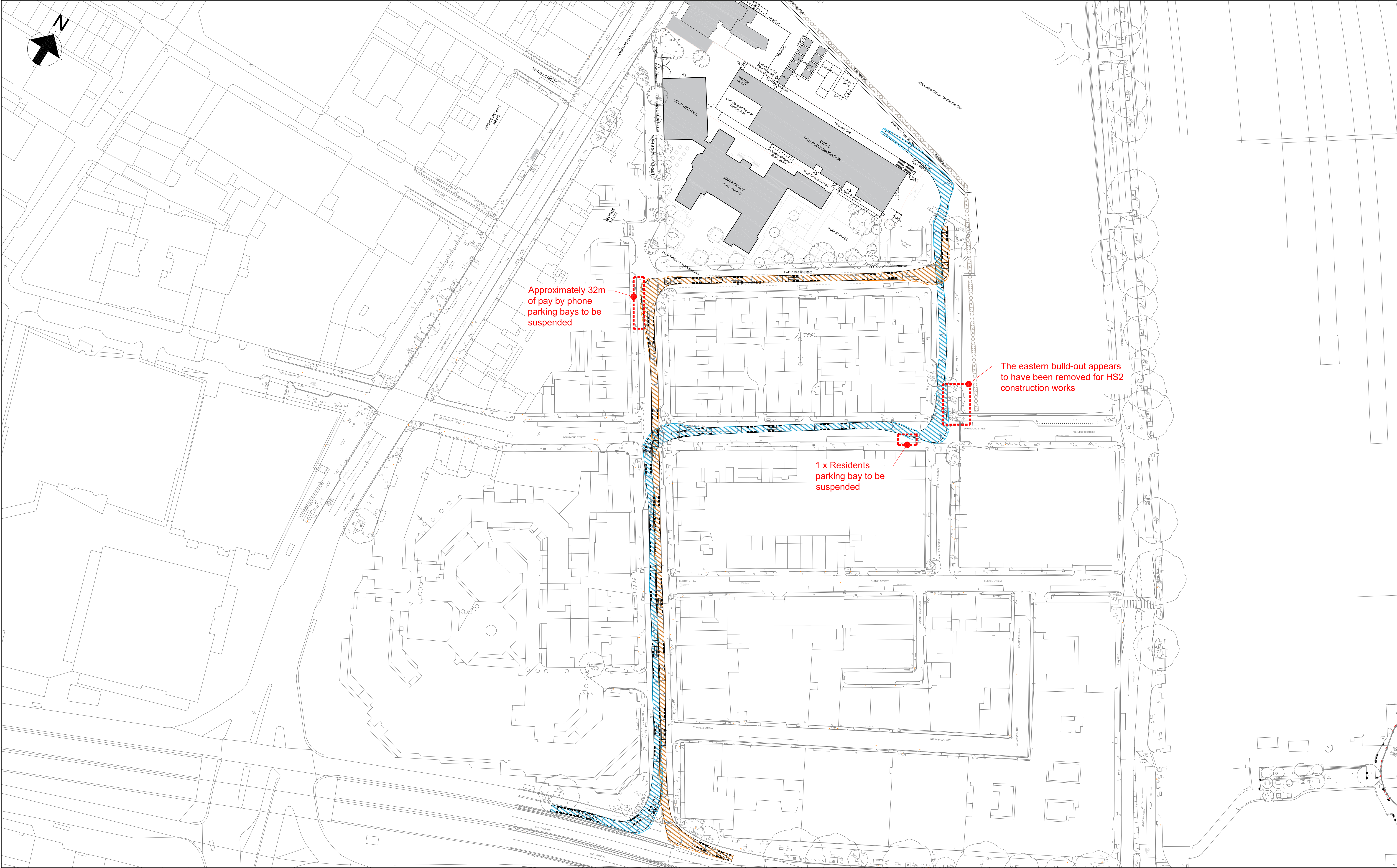
1. TfL cycle lanes along Hampstead Road are not shown in this topographical survey

HS2

Registered in England
Registration No: 06791686
Registered office:
2 Snow Hill, Queensway,
Birmingham, B4 6GA

Creator/Originator
Arup

Zone	SS06 Euston Station			Project/Contract	SDSC	
Design Stage				Discipline/Function	Transport Planning	
Drawing Title	Maria Fidelis 10m Rigid - Construction Traffic Swept Path Analysis			Drawn	Checked	Approved
	ANW	KW	MR	Date	Scale	Size
	14/06/21	1:750	A1	Drawing No.	Rev.	
					P01	



						HS2 accepts no responsibility for any circumstances which arise from the reproduction of this document after alteration, amendment or abbreviation or if it is issued in part or issued incompletely in any way.
						© Crown Copyright and database right 2018. All rights reserved. Ordnance Survey Licence number 100049190
						© Crown Copyright material is reproduced with the permission of Land Registry under delegated authority from the Controller of HMSO.
						This material was last updated on 2018 and may not be copied, distributed, sold or published without the formal permission of Land Registry. Only an official copy of a title plan or register obtained from the Land Registry may be used for legal or other official purposes.
Rev	Description	Drawn	Checked	Con App	HS2 App	Scale with caution as distortion can occur.

Legends/Notes:

Max Legal Length (UK) Articulated Vehicle (16.5m)
Overall Length 16.50m
Overall Width 2.55m
Overall Body Height 2.55m
Min Body Ground Clearance 0.41m
Max. Truck Width 2.55m
Lock to lock time 2.55s
Kerb to kerb Turning Radius 6.55m

Note:

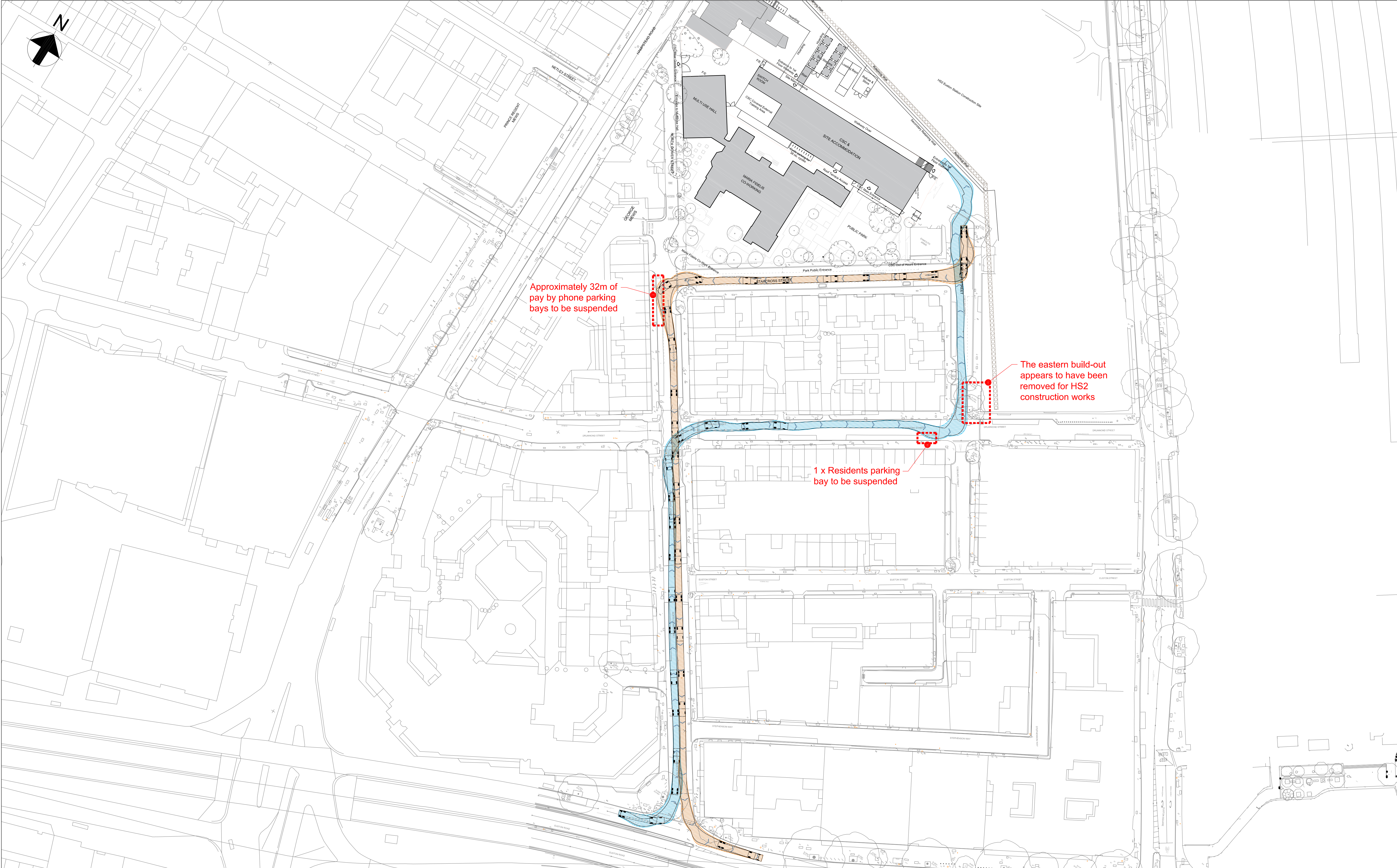
1. TfL cycle lanes along Hampstead Road are not shown in this topographical survey

HS2

Registered in England
Registration No. 06791686
Registered office:
2 Snow Hill, Queensway,
Birmingham, B4 6GA

Creator/Originator
Arup

Zone	SS06 Euston Station			Project/Contract	SDSC	
Design Stage				Discipline/Function	Transport Planning	
Drawing Title	Maria Fidelis Construction Traffic - 16.5m Artic Swept Path Analysis			Drawn	Checked	Approved
	ANW	KW	MR	Date	Scale	Size
	14/06/21	1:750	A1	Drawing No.	Rev.	
					P01	



						HS2 accepts no responsibility for any circumstances which arise from the reproduction of this document after alteration, amendment or abbreviation or if it is issued in part or issued incompletely in any way.
						© Crown Copyright and database right 2018. All rights reserved. Ordnance Survey Licence number 100049190
						© Crown Copyright material is reproduced with the permission of Land Registry under delegated authority from the Controller of HMSO.
						This material was last updated on 2018 and may not be copied, distributed, sold or published without the formal permission of Land Registry. Only an official copy of a title plan or register obtained from the Land Registry may be used for legal or other official purposes.
Rev	Description	Drawn	Checked	Con App	HS2 App	Scale with caution as distortion can occur.

Legends/Notes:


Generic Low Loader with Trailer
Steering (18.0m)
Overall Length 14.92m
Overall Width 5.62m
Overall Body Height 3.24m
Min Body Ground Clearance 0.25m
Max Track Width 11.358m
Lock to lock time 1.31m
Kerb to Kerb Turning Radius 11.358m

Note:

1. TfL cycle lanes along Hampstead Road are not shown in this topographical survey

Registered in England
Registration No. 06791686
Registered office:
2 Snow Hill, Queensway,
Birmingham, B4 6GA

Creator/Originator
Arup

<div></div> <div>Registered in England Registration No. 06791686 Registered office: 2 Snow Hill, Queensway, Birmingham, B4 6GA</div>	Zone	SS06 Euston Station			Project/Contract			SDSC						
	Design Stage				Discipline/Function					Transport Planning				
	Drawing Title	Maria Fidelis			Drawn	ANW		Checked	KW		Approved	MR		
		Construction Traffic - 18m Low Loader			Date	14/06/21		Scale	1:750		Size	A1		
	Creator/Originator	Arup			Swept Path Analysis			Drawing No.			-		Rev.	P01

Appendix C – ATZ Route Review and Recommendations

ATZ Route Review and Recommendations

A desktop review of each of the five key routes has been undertaken, with observations for each route made based on the Healthy Streets principals, allowing recommendations on how these aspects could be improved with reference to the Healthy Streets indicators. More detailed observations and recommendations have been made for sections of each route where a quality or safety improvement would be most beneficial.

Route 1 – Towards Mornington Crescent Station

The route towards Mornington Crescent Station runs north from the site along Hampstead Road. This route includes restaurants, cafés and supermarkets. The route is shown in Figure 5. Photographs, observations and recommendations of this route are included in Table 5.

Table 17: Photographs, Observations and Recommendations of Route 1

Photograph 1: Hampstead Road / Drummond Street



Source: Google Maps (April 2019)

Photograph 2: The A400 Hampstead Road / Cardington Street



Source: Google Maps (October 2020)

<p>Observations:</p> <p>There are pedestrian crossings available at each arm. The footway is in good condition, with dropped kerbs, allowing pedestrians to cross comfortably. However, there are no advanced cycle stop lines for cyclists.</p> <p>Healthy Streets Indicators:</p> <p><i>People choose to walk, cycle and use public transport</i></p> <p><i>People feel safe</i></p> <p><i>People feel relaxed</i></p> <p><i>Pedestrians from all walks of life</i></p> <p>Recommendations:</p> <p>Consideration could be given to introducing advanced stop lines for cyclists, especially given the nearby cycle routes on the A400 Hampstead Road and A501 Euston Road.</p>	<p>Observations:</p> <p>There are two-way cycle lanes =with advanced cycle stop lines. The footway is in good condition, and from Google Streetview there were a number of temporary signals given the nature of HS2 works in this area.</p> <p>Healthy Streets Indicators:</p> <p><i>People choose to walk, cycle and use public transport</i></p> <p><i>People feel safe</i></p> <p><i>People feel relaxed</i></p> <p><i>Pedestrians from all walks of life</i></p> <p>Recommendations:</p> <p>Pedestrians crossings (dropped kerbs and road markings) are provided at this location but consideration could be given to upgrading these to be signal-controlled to enhance pedestrian safety.</p>
<p>Photograph 3: The A400 Hampstead Road / Harrington Square / Hurdwick Place</p>  <p><i>Source: Google Maps (April 2019)</i></p>	<p>Observations:</p> <p>Most of the footways are wide. The island at this junction has several cycle parking spaces in the form of Sheffield stands. There is also Santander cycle hire nearby on the A400 Hampstead Road. There are dropped kerbs to assist pedestrians to cross comfortably.</p> <p>Healthy Streets Indicators:</p> <p><i>People choose to walk, cycle and use public transport</i></p> <p><i>Pedestrians from all walks of life</i></p> <p>Recommendations:</p> <p>Consideration could be given to upgrading the crossings at this junction, perhaps in the form of a zebra crossings similar to those provided at the A400 Hampstead Road / Harrington Square / Mornington Crescent junction to the south. However, it is recognised that there may be constraints with the location of the bus stop on the A400 Hampstead Road.</p>