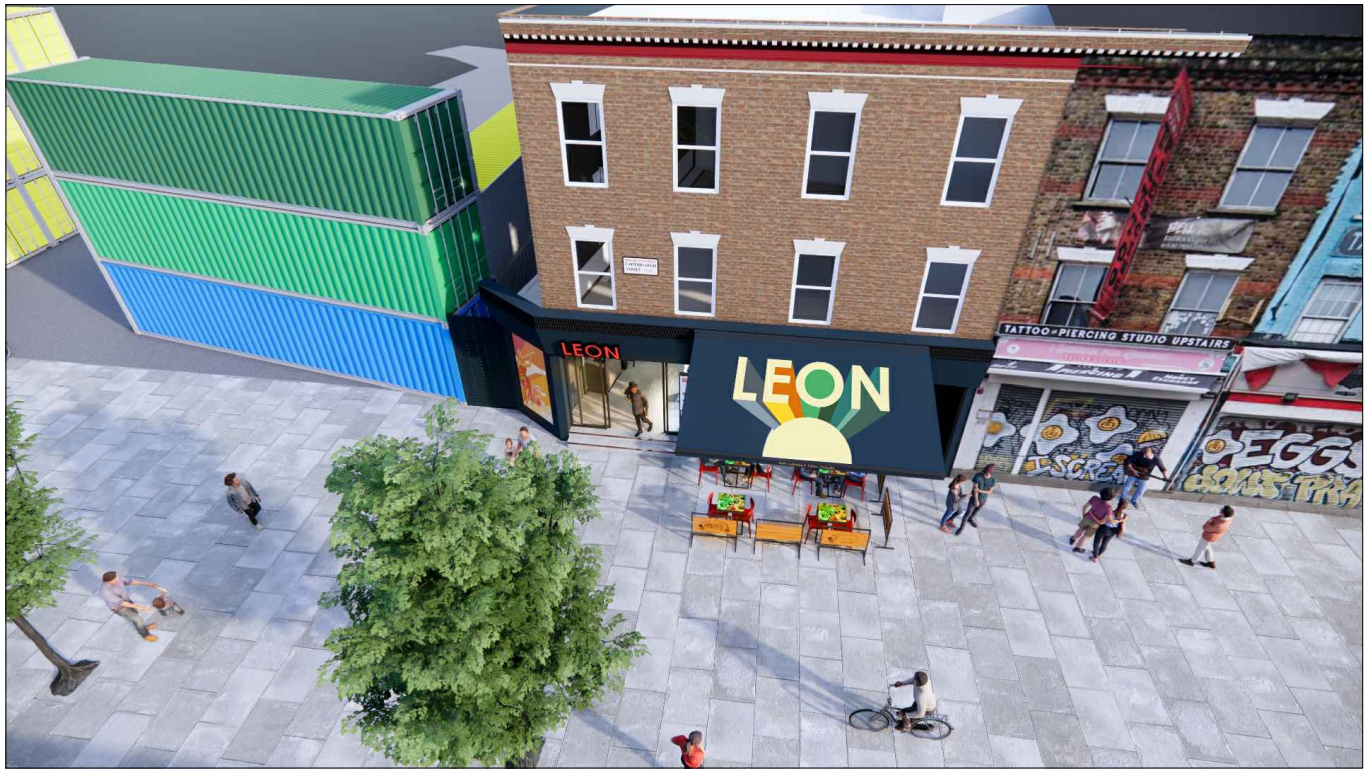




Shopfront VISUALS - as proposed
Front view
NTS



Shopfront VISUALS - as proposed
Left hand side view
NTS



Shopfront VISUALS - as proposed
awning open
NTS



Shopfront VISUALS - as proposed
awning closed
NTS

Written dimensions on these drawings shall take precedence over scaled dimensions. Contractors shall verify and be responsible for all dimensions and conditions on the project and this office must be notified of any variations from the dimensions and conditions shown by these drawings prior to commencement of any work. All contractors are deemed to have made themselves aware of site conditions prior to entering into any contract. Shopfitting details must be submitted to this office for approval before proceeding with fabrication. This drawing is the property of rpa. Copyright is reserved by them and the drawing is issued on condition that it is not copied, reproduced, retained or disclosed to any unauthorised person, either wholly or in part without the consent in writing of rpa.

+ 15.06.2021		CREATED		JC	CS
ev date	description			drawn	chk
client					
<div>LEON</div> <div>Borough Market 18-20 Southwark St. London SE1 1TJ 02070897070</div>					
address					
CAMDEN					
190 Camden High street,					
Camden					
London					
NW1 8QP					
client job no.					
-					
drawing title					
Shopfront					
VISUALS					
as proposed					
drawn by	date			checked	
JC	23.06.2021			CS	
job no.	drawing no.			revision	
2007120	A218				