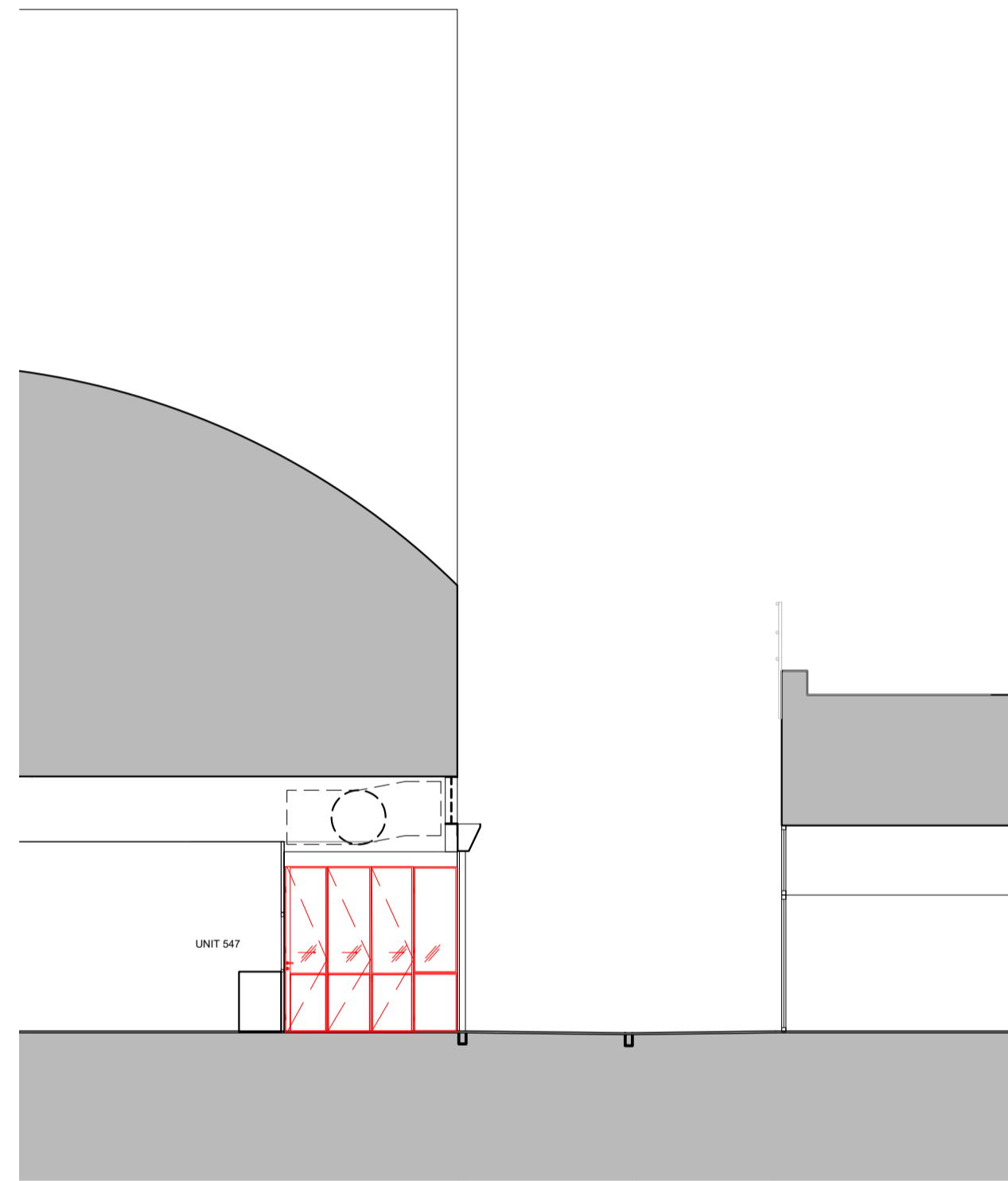
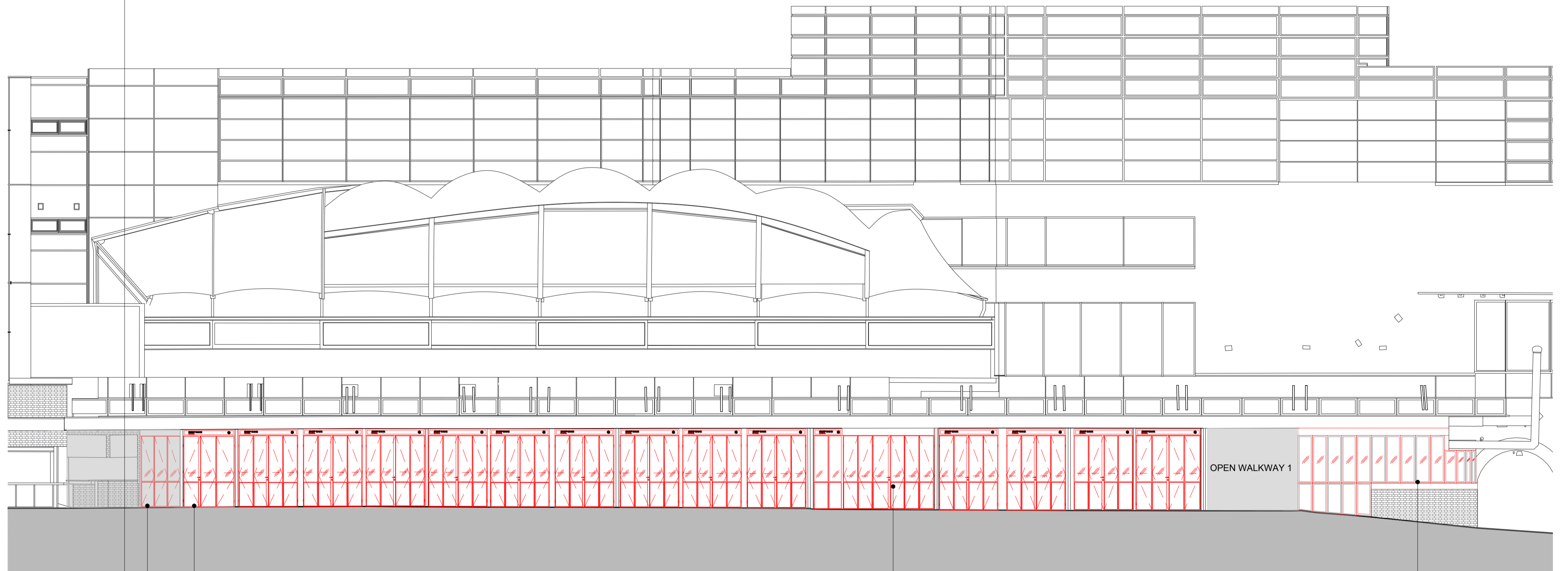


1
(0)305



1. WALKWAY 3 ELEVATION



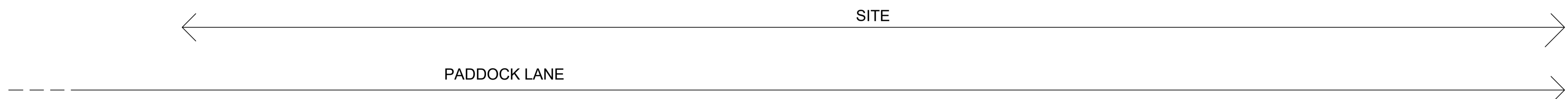
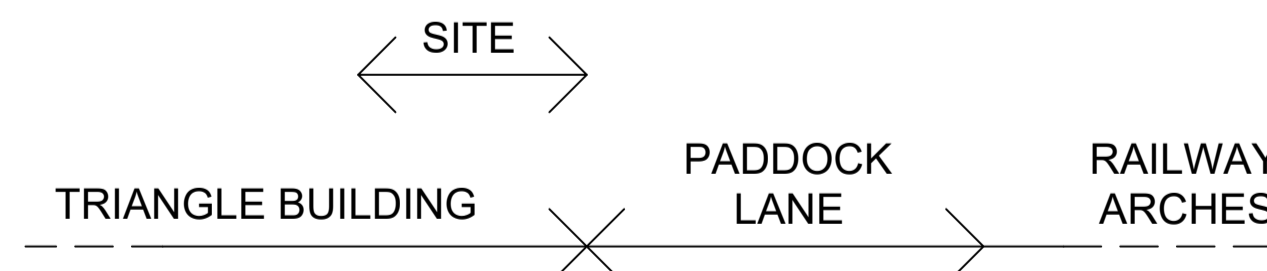
2. NORTH FACING ELEVATION

UNIT 501 REFURBISHED
NEW FOLDING SLIDING DOORS TO
WALKWAY 3 SHOWN BEHIND

NEW FOLDING
SLIDING DOORS
TO WALKWAY 2

OPEN WALKWAY 1

NEW FACETED
WINDOW



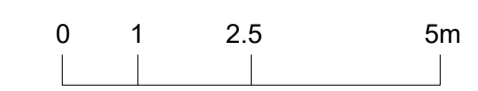
DO NOT SCALE

THE CONTRACTOR IS TO CHECK AND VERIFY ALL BUILDING AND SITE DIMENSIONS, LEVELS AND SEWER INVERT LEVELS AT CONNECTION POINTS BEFORE WORK STARTS.

THIS DRAWING IS TO BE READ AND CHECKED IN CONJUNCTION WITH ENGINEERS AND OTHER SPECIALIST DRAWINGS.

THE DRAWING AND THE WORKS DEPICTED ARE THE COPYRIGHT OF REED WATTS ARCHITECTS AND MAY NOT BE REPRODUCED EXCEPT BY WRITTEN PERMISSION.

REV	DATE	DESCRIPTION
A	07.04.21	STAGE 2
B	28.07.21	PLANNING



DRAWING	
PADDOCK LANE PROPOSED ELEVATION	
DRAWING NO 2015(0)305	REVISION B
SCALE 1:100 @ A1; 1:200 @ A3	DATE 10.03.21
STATUS PLANNING APPLICATION	

www.reedwatts.com
studio@reedwatts.com
PROJECT 2015 PADDOCK LANE

