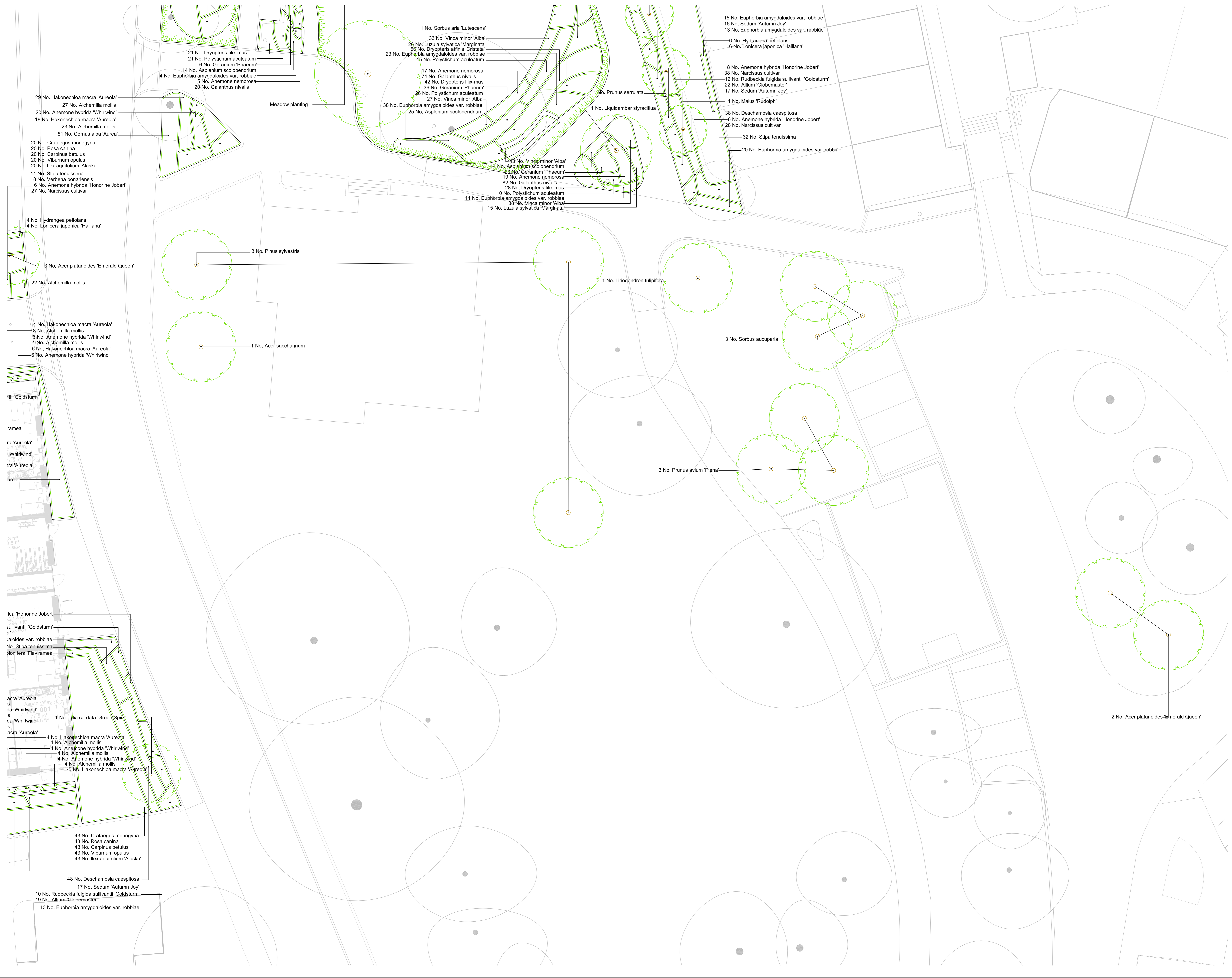


LINKED MODEL SCHEDULE:
 1. Drawing to be read **Colour**.
 2. Drawing to be read in conjunction with MPR-TMA-ZZ-GF-GA-L-10005, MPR-TMA-ZZ-GF-GA-L-10006 and MPR-TMA-ZZ-GF-SH-L-10008.



- 29 No. Hakonechloa macra 'Aureola'
- 27 No. Alchemilla mollis
- 20 No. Anemone hybrida 'Whirlwind'
- 18 No. Hakonechloa macra 'Aureola'
- 23 No. Alchemilla mollis
- 51 No. Cornus alba 'Aurea'
- 20 No. Crataegus monogyna
- 20 No. Rosa canina
- 20 No. Carpinus betulus
- 20 No. Viburnum opulus
- 20 No. Ilex aquifolium 'Alaska'
- 14 No. Stipa tenuissima
- 8 No. Verbena bonariensis
- 6 No. Anemone hybrida 'Honorine Jobert'
- 27 No. Narcissus cultivar

- 4 No. Hydrangea petiolaris
- 4 No. Lonicera japonica 'Halliana'
- 3 No. Acer platanoides 'Emerald Queen'
- 22 No. Alchemilla mollis

- 4 No. Hakonechloa macra 'Aureola'
- 3 No. Alchemilla mollis
- 6 No. Anemone hybrida 'Whirlwind'
- 4 No. Alchemilla mollis
- 5 No. Hakonechloa macra 'Aureola'
- 6 No. Anemone hybrida 'Whirlwind'

Goldsturni

Flaviramea

- ra 'Aureola'
- 'Whirlwind'
- ra 'Aureola'
- urea'

3.0 m
3.0 m
3.0 m

- ida 'Honorine Jobert'
- var
- sullivantii 'Goldsturni'
- tr'
- aloides var. robbiae
- No. Stipa tenuissima
- olonifera 'Flaviramea'

- acra 'Aureola'
- is
- da 'Whirlwind'
- is
- da 'Whirlwind'
- is
- acra 'Aureola'

- 4 No. Hakonechloa macra 'Aureola'
- 4 No. Alchemilla mollis
- 4 No. Anemone hybrida 'Whirlwind'
- 4 No. Alchemilla mollis
- 4 No. Anemone hybrida 'Whirlwind'
- 4 No. Alchemilla mollis
- 5 No. Hakonechloa macra 'Aureola'

- 43 No. Crataegus monogyna
- 43 No. Rosa canina
- 43 No. Carpinus betulus
- 43 No. Viburnum opulus
- 43 No. Ilex aquifolium 'Alaska'

- 48 No. Deschampsia caespitosa
- 17 No. Sedum 'Autumn Joy'
- 10 No. Rudbeckia fulgida sullivantii 'Goldsturni'
- 19 No. Allium 'Globemaster'
- 13 No. Euphorbia amygdaloides var. robbiae

Meadow planting

- 3 No. Pinus sylvestris

- 1 No. Acer saccharinum

- 1 No. Sorbus aria 'Lutescens'
- 33 No. Vinca minor 'Alba'
- 26 No. Luzula sylvatica 'Marginata'
- 56 No. Dryopteris affinis 'Cristata'
- 23 No. Euphorbia amygdaloides var. robbiae
- 45 No. Polystichum aculeatum
- 17 No. Anemone nemorosa
- 74 No. Galanthus nivalis
- 42 No. Dryopteris filix-mas
- 36 No. Geranium 'Phaeum'
- 26 No. Polystichum aculeatum
- 38 No. Euphorbia amygdaloides var. robbiae
- 25 No. Asplenium scolopendrium

- 43 No. Vinca minor 'Alba'
- 44 No. Asplenium scolopendrium
- 20 No. Geranium 'Phaeum'
- 19 No. Anemone nemorosa
- 82 No. Galanthus nivalis
- 28 No. Dryopteris filix-mas
- 10 No. Polystichum aculeatum
- 11 No. Euphorbia amygdaloides var. robbiae
- 38 No. Vinca minor 'Alba'
- 15 No. Luzula sylvatica 'Marginata'

- 1 No. Prunus serrulata

- 1 No. Liquidambar styraciflua

- 1 No. Liriodendron tulipifera

- 3 No. Prunus avium 'Plena'

- 15 No. Euphorbia amygdaloides var. robbiae
- 16 No. Sedum 'Autumn Joy'
- 13 No. Euphorbia amygdaloides var. robbiae
- 6 No. Hydrangea petiolaris
- 6 No. Lonicera japonica 'Halliana'

- 8 No. Anemone hybrida 'Honorine Jobert'
- 38 No. Narcissus cultivar
- 12 No. Rudbeckia fulgida sullivantii 'Goldsturni'
- 22 No. Allium 'Globemaster'
- 17 No. Sedum 'Autumn Joy'

- 1 No. Malus 'Rudolph'
- 38 No. Deschampsia caespitosa
- 6 No. Anemone hybrida 'Honorine Jobert'
- 28 No. Narcissus cultivar

- 32 No. Stipa tenuissima
- 20 No. Euphorbia amygdaloides var. robbiae

- 3 No. Sorbus aucuparia

- 2 No. Acer platanoides 'Emerald Queen'

STATUS	REV	DATE	DESCRIPTION	DSG	DRW	CHK	APP
S3	P04	02/08/2021	Amendments to layout	AC	TS		
S3	P03	20/04/2021	Amendments to specification	AC	TS		
S3	P02	25/03/2021	Amendments to planting	AD	TS		
S3	P01	22/05/2020	Stage 4 Issue	AC	TS		

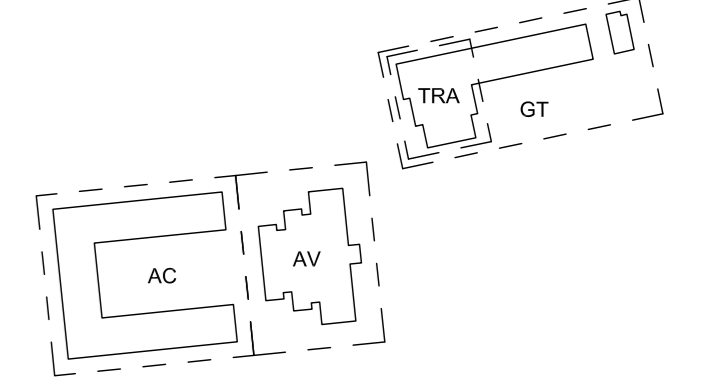
ALL REVISIONS

MAIN CONTRACTOR	
	BOUYGUES UK Buckel House 1 Lambeth Palace Rd Lambeth, London SE1 7EU TEL: 020 7491 0020

CLIENT LOGO



KEY PLAN



ORIGINATOR



Studio 324 Charter House, Kensington Park
 318 Kensington Road, London, SW9 6JZ
 T: +44 (0)20 7547 2050
 E: studio@turkingtonmartin.com

PROJECT NAME

Maitland Park Redevelopment

DRAWING TITLE

Detailed Planting Plan 3 of 3

SCALE @ A0
1 : 100
 MODEL FILE NAME - REVISION
 Not Applicable

FIRST ISSUE DATE	PROJECT STAGE	STATUS CODE
22/05/2020	Stage 4	S3 - Suitable for Review and Comment

PROJECT ORIGINATOR	VOLUME	LEVEL	TYPE	ROLE	NUMBER	REV
MPR	TMA	ZZ	GF	GA	L	100007 P04