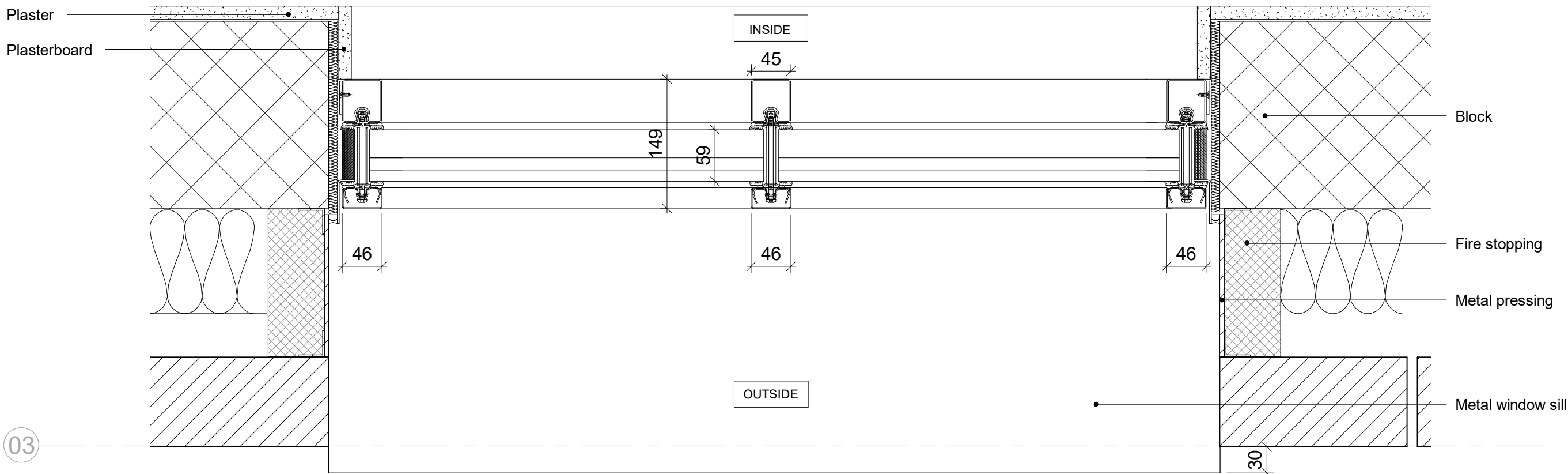
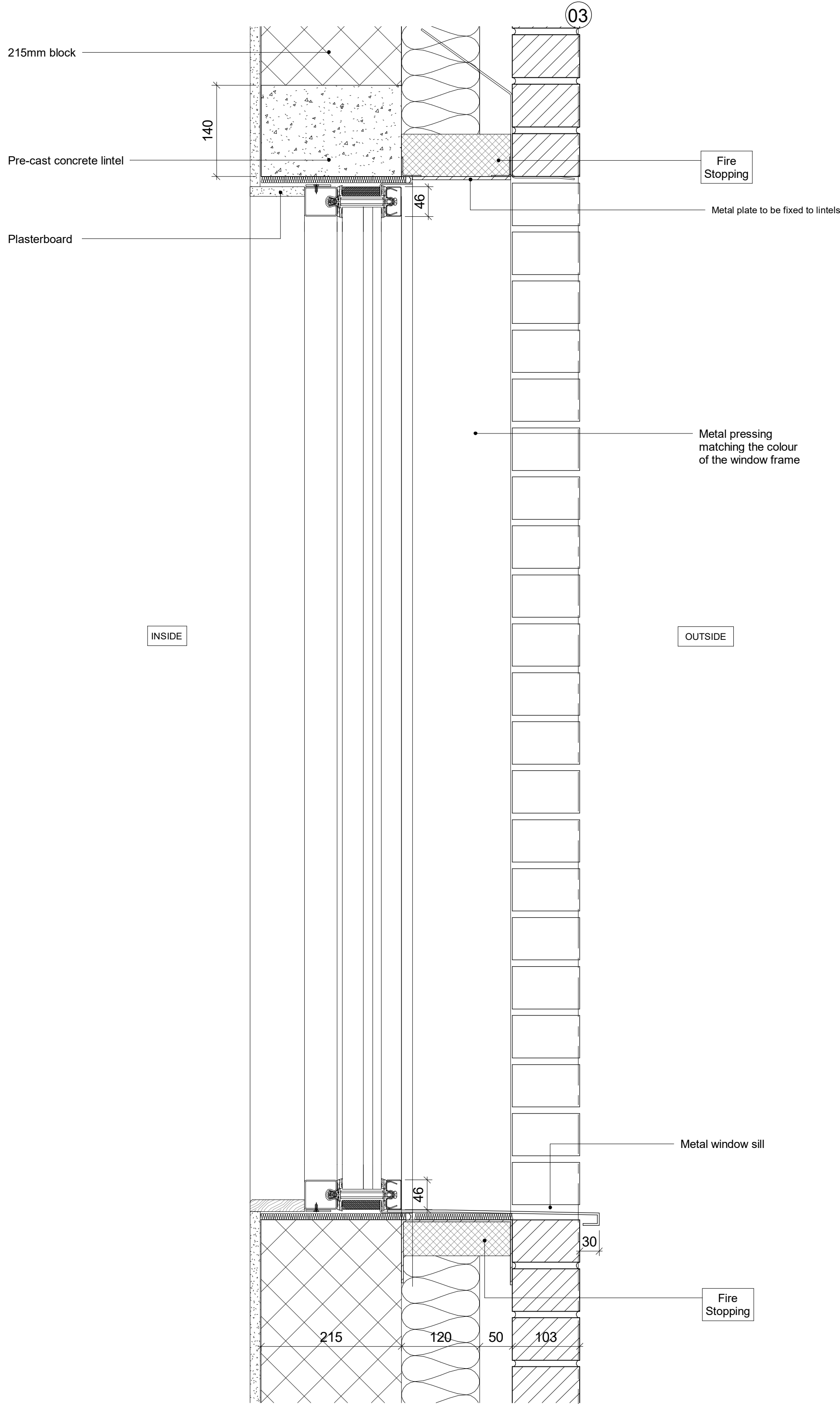


2 South Elevation - W 14 Elevation
Scale: 1 : 5



1 South Elevation - W 14 Plan
Scale: 1 : 5



3 South Elevation - W 14 Section
Scale: 1 : 5

WINDOW SPECIFICATIONS
Frame system: Forster Vario steel system
Fire rating: EI 90
Frame thickness: 45mm
RAL: 7016
Glass type: Clear / Frosted
Glass thickness: 59.5mm (clear glass); 67.4 (frosted glass)

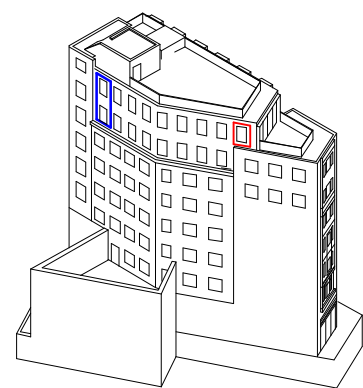
Disclaimer
Do not scale from this drawing. Check all dimensions on site before fabrication or setting out. This document is copyright and may not be reproduced without permission of the owner.

Notes
Not all revision notes appear on all sheets. Refer to tagged clouds.

- Key**
- ALT-301 Retained facade to be cleaned and made good
 - BRK-101 Red brick matching retained facade
 - BRK-102 Buff brick
 - BRK-103 Dark grey brick
 - EWS-702 Aluminium cladding and frame
 - EWS-120 Retail glazing and framing
 - EWS-705 Backpainted glass and framing
 - EWS-205 Residential glazing and aluminium framing
 - EWS-203 Residential glazing and U-PVC framing
 - EWS-201 Residential glazing and steel framing FR90
 - EWS-202 Residential glazing and steel framing FR120
 - EWS-701 Metal louvres
 - EWS-801 Granite Plinth
 - DRS-301 Residential metal door with double glazed panel
 - DRS-215 Waste store door
 - DRS-303 Metal frame glazed retail door
 - DRS-202 External FR90 metal hinged door
 - DRS-205 External metal hinged door
 - DRS-215 External metal hinged door
 - DRS-802 External riser door
 - DRS-803 External riser door
 - BAL-105 External metal balustrade and handrail
 - AM-101 Aluminium PPC coping
 - CON-401 Precast concrete matching existing
 - IWS-312 Retained facade internal lining
 - IWS-313 New brick wall internal lining
 - IWS-331 Column lining
 - TRM-201 MDF Non-combustible window board
 - AM-305 MVHR outlet/inlet aluminium PPC finish grille
 - GL-101 - Glass infill panel FR90
 - GL-102 - Glass infill panel
 - GL-103 - Glass infill panel FR120
 - SFS-101 - Light steel framing system
 - BRK-105 - Red air brick
 - BRK-106 - Buff air brick
 - BRK-107 - Dark grey air brick

Rev	Reason for Issue	Date	Iss
C03	Updated for planning conditional approval	05/07/2021	Apt
C02	Construction issue for Skanska	14/05/2021	Apt
C01	For Construction	12/01/2021	Apt

Consultants
Structural Engineer: Davies Maguire
MEP Engineer: GDM Partnership
Project Manager: CBRE



Apt

235 St John Street London EC1V 4NG www.aplondon

Client
Royal London Asset Management

Project
Castlewood & Medius House

Drawing Title
**External Envelope
Window Detail - New Facade W 14
Detail**

Scale	Drawn By	Issued By
1 : 5 @ A1	Apt	Apt

Construction

Project No.	Drawing No.	Revision
18013	A_21_963	C03