

Apt

Medius House
Planning Condition 4

05 July 2021

Project Title Medius House	Project Number 18013
Document Name Planning Condition 4	Date 05 July 2021
Status Approved for issue	Revision 01
Author TS	Reviewed by RLF

Contents

1.0
Introduction

Purpose of the Document

7

2.0
Particulars and Samples
of Materials

Finishes and Materials Codes

10

Cladding

13

Windows and Glazing

16

Doors

18

Miscellaneous

19

3.0
Material Locations

North Elevation

22

East Elevation

23

South Elevation

24

West Elevation

26

4.0
Appendix

A_21_940-Typical Balustrade Details

A_21_950-Window Detail - Retained Facade W 01

A_21_951-Window Detail - Retained Facade W 02

A_21_952-Window Detail - Retained Facade W 03

A_21_953-Window Detail - Retained Facade W 04

A_21_954-Window Detail - Retained Facade W 05

A_21_955-Window Detail - Retained Facade W 06

A_21_956-Window Detail - New Facade W 07

A_21_957-Window Detail - New Facade W 08

A_21_958-Window Detail - New Facade W 09

A_21_959-Window Detail - New Facade W 10

A_21_960-Window Detail - New Facade W 11

A_21_961-Window Detail - New Facade W 12

A_21_962-Window Detail - New Facade W 13

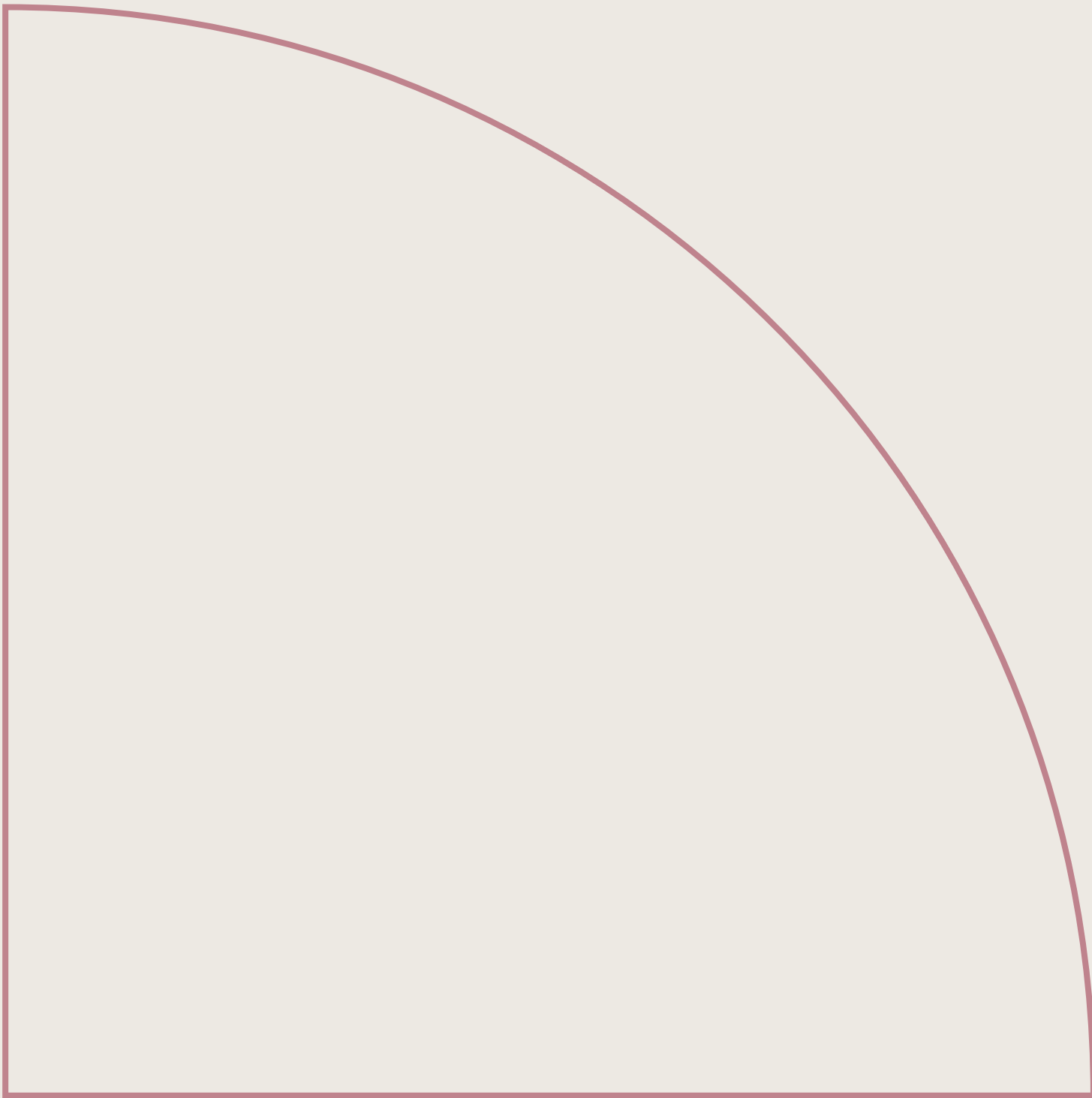
A_21_963-Window Detail - New Facade W 14

A_21_964-Window Detail - New Facade W 15

A_21_965-Window Detail - New Facade W 16

A_21_966-Window Detail - New Facade W 17

A_21_967-Window Detail - New Facade W 18



1.0

Introduction

Purpose of the Document

This document presents the particulars of materials proposed to be used on the external faces of Medius House, in line with the requirements of Condition 4, as highlighted below.

This report will be seeking a part discharge of the above condition for the bricks, aluminium cladding, windows, balustrade and coping.

Planning Condition No. 4 - Detailed drawings/samples (Submission rev01)

***Submission rev00 was issued on 01/04/2021**

Detailed drawings, or samples of materials as appropriate, in respect of the following, shall be submitted to and approved in writing by the Council before the relevant part of the work within the relevant phase (a) Castlewood House; (b) Medius House is begun:

a) Plan, elevation and section drawings, including jambs, head and cill, of all external windows, doors and balustrades at a scale of 1:10.

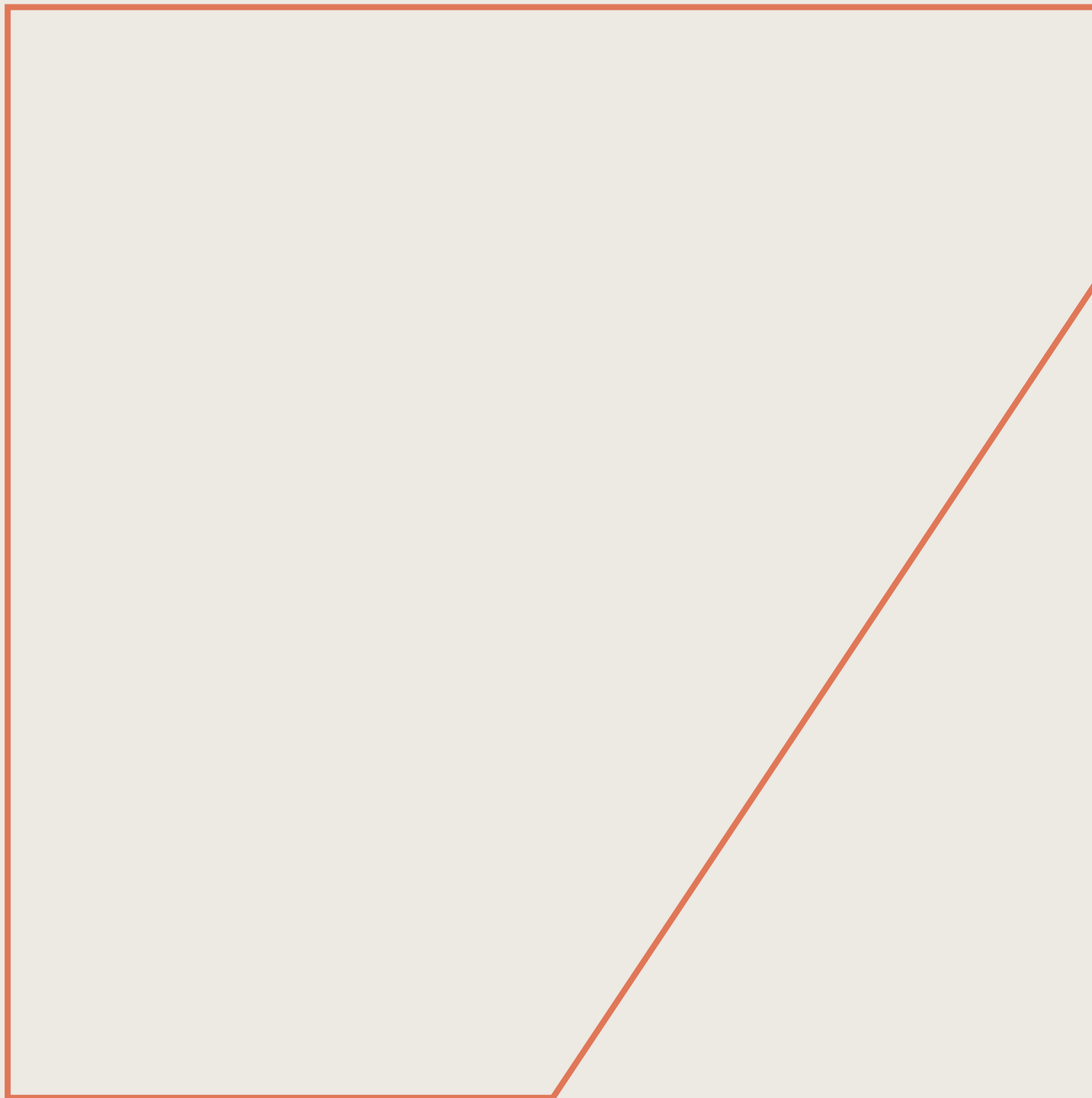
b) Samples and manufacturer's details at a scale of 1:10, of all facing materials including windows and door frames, glazing, balustrades and brickwork with a full scale sample panel of brickwork, spandrel panel, glazing and balustrade elements of no less than 1m by 1m including junction window openings demonstrating the proposed colour, texture, face-bond and pointing.

A sample panel of all facing materials shall be erected on-site and approved by the Council before the relevant parts of the work are commenced and the development shall be carried out in accordance with the approval given. The relevant part of the works shall then be carried in accordance with the approved details.

-

In light of the current pandemic situation, this report has been provided to give pictures of the samples in





2.0

Particulars and
Samples of Materials

Finishes and Materials Codes

The approved drawings note materials and finishes for the proposals. The detailed design proposals have been developed in line with the approved these requirements and a series of finishes codes has been developed for ease of reference within the project.

These codes have been referenced against the approved plan notation to the left and are described in more detail below, subdivided in the following categories:

- Cladding
- Windows and glazing
- Doors
- Miscellaneous

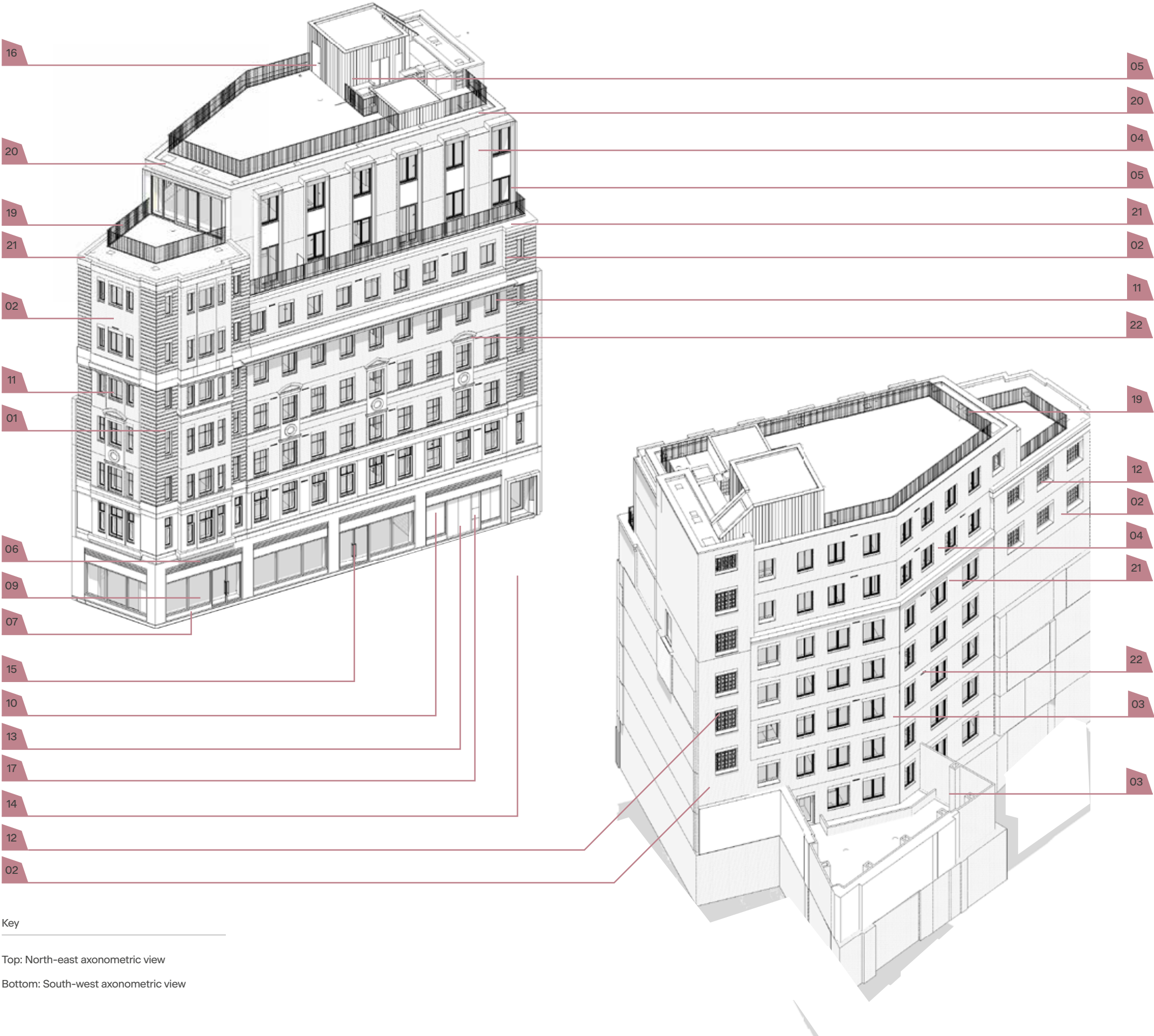
On the following pages, approved and general arrangement drawings are reproduced alongside the relevant fishes codes for ease of reference.

Code		Description	Location - Typical
Cladding	ALT-301	Retained façade to to be cleaned and made good	North and East elevation (Level 00-05)
	BRK-101	Red brick matching retained façade	North and East elevation (Level 05-07) South elevation (Level 02-08) West elevation (Level 04-08)
	BRK-102	Buff brick	South elevation (Level 01-06)
	BRK-103	Black brick	North, East and South elevation (Level 06-08)
	EWS-702	Aluminium cladding and frame	North elevation (Level 06-08) East elevation (Level 07) All elevations (Roof pod and lift overrun)
	EWS-701	Aluminium louvres	North and East elevation (Level 00)
	EWS-801	Granite plinth	North and East elevation (Level 00)
Windows and glazing	EWS-120	Retail glazing and framing	North and East elevation (Level 00)
	EWS-705	Backpainted glazing and framing	North elevation (Level 00)
	EWS-205	Residential glazing and aluminium framing	All elevations
	EWS-201	Residential glazing and steel framing EI90	South elevation
	GL-101	FR90 glazing	South elevation
	GL-102	Retail and residential glazing	All elevations
	GL-104	Backpainted glazing	North elevation (Level 00)
Doors	DRS-215	Aluminium cladded metal door	North elevation (Level 00)
	DRS-301	Residential aluminium frame glazed door	North and South elevation (Level 00 and 01)
	DRS-303	Retail aluminium frame glazed door	North and East elevation (Level 00)
	DRS-205	Aluminium cladded metal door	East elevation (Pod)
	DRS-802	Metal frame aluminium dry riser door	North elevation (Level 00)
	DRS-803	Metal frame aluminium cladded riser door	North elevation (Pod)
Miscellaneous	BAL-105	External metal balustrade and handrail	Terraces leval 06, 07, 08
	AM-101	Aluminium Capping / Coping	Level 08 terrace
	CON-401	Precast concrete matching existing	Level 06, 07 and 08
	AM-305	MVHR outlet/inlet aluminium PPC finish grille	North, South and East elevations

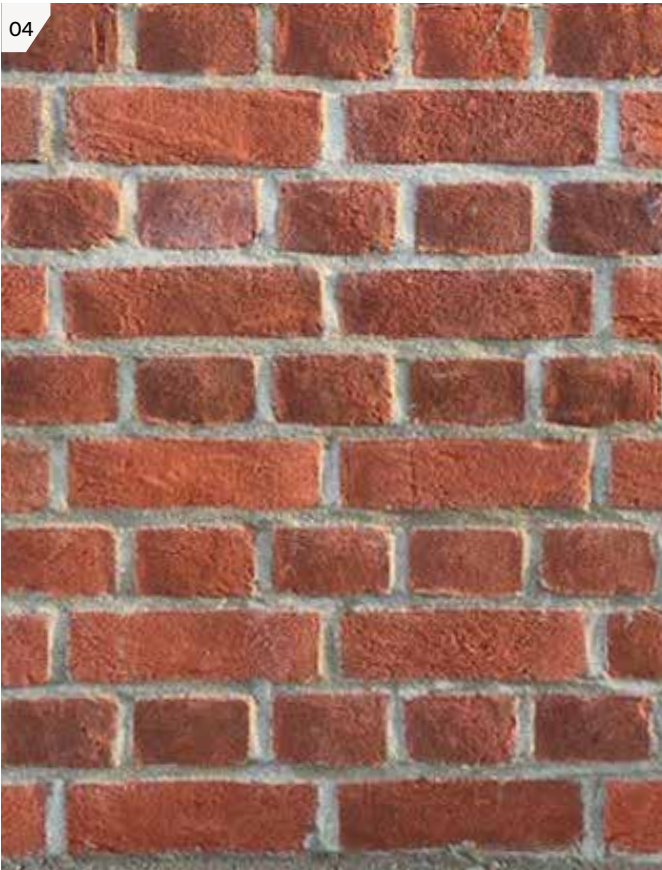
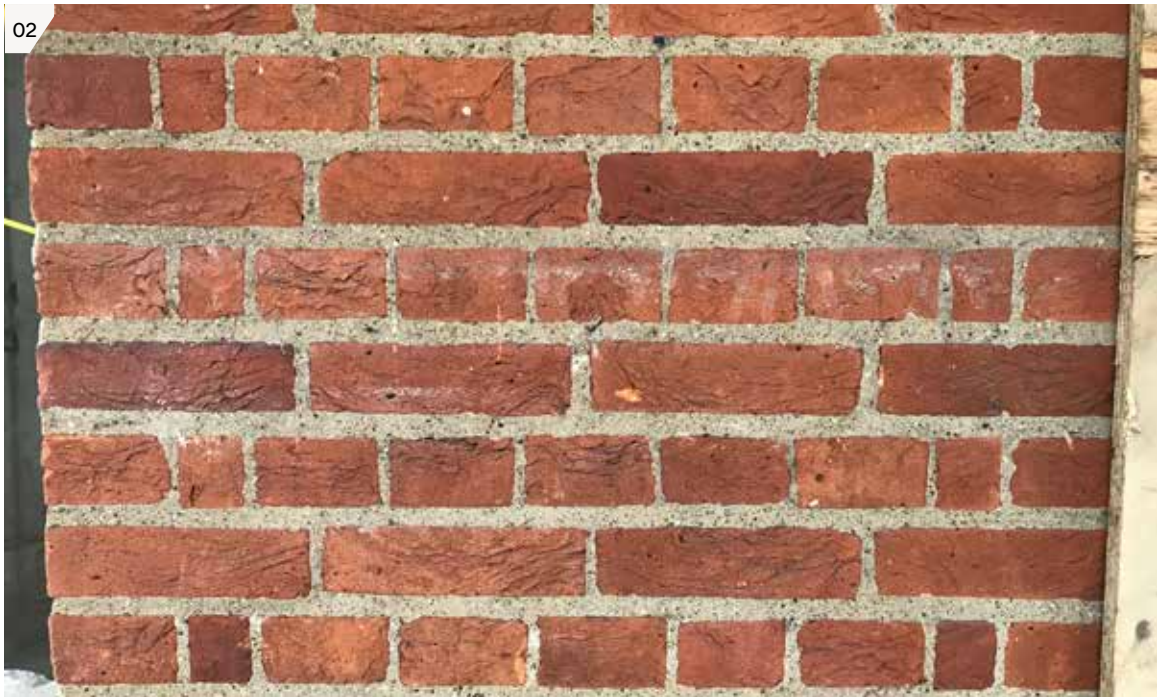
Grey elements are not part of this report.

Finishes and Material Codes

- 01. AL-301 Retained facade to be cleaned and made good
- 02. BRK-101 Red brick matching retained façade
- 03. BRK-102 Buff brick
- 04. BRK-402 Black brick
- 05. EWS-702 Aluminium cladding and frame
- 06. EWS-701 Aluminium louvres
- 07. EWS-801 Granite plinth
- 09. EWS-120 Retail glazing and framing
- 10. EWS-705 Backpainted glazing and framing
- 11. EWS-205 Residential glazing and aluminium framing
- 12. EWS-201 Residential glazing and steel framing EI90
- 13. DRS-215 Aluminium clad metal door
- 14. DRS-301 Residential aluminium frame glazed door
- 15. DRS-303 Retail aluminium frame glazed door
- 16. DRS-205 Aluminium clad metal door
- 17. DRS-802 Metal frame aluminium dry riser door
- 19. BAL-105 External metal balustrade and handrail
- 20. AM-101 Aluminium Capping / Coping
- 21. CON-401 Precast concrete matching existing
- 22. AM-305 MVHR outlet/inlet aluminium PPC finish grille

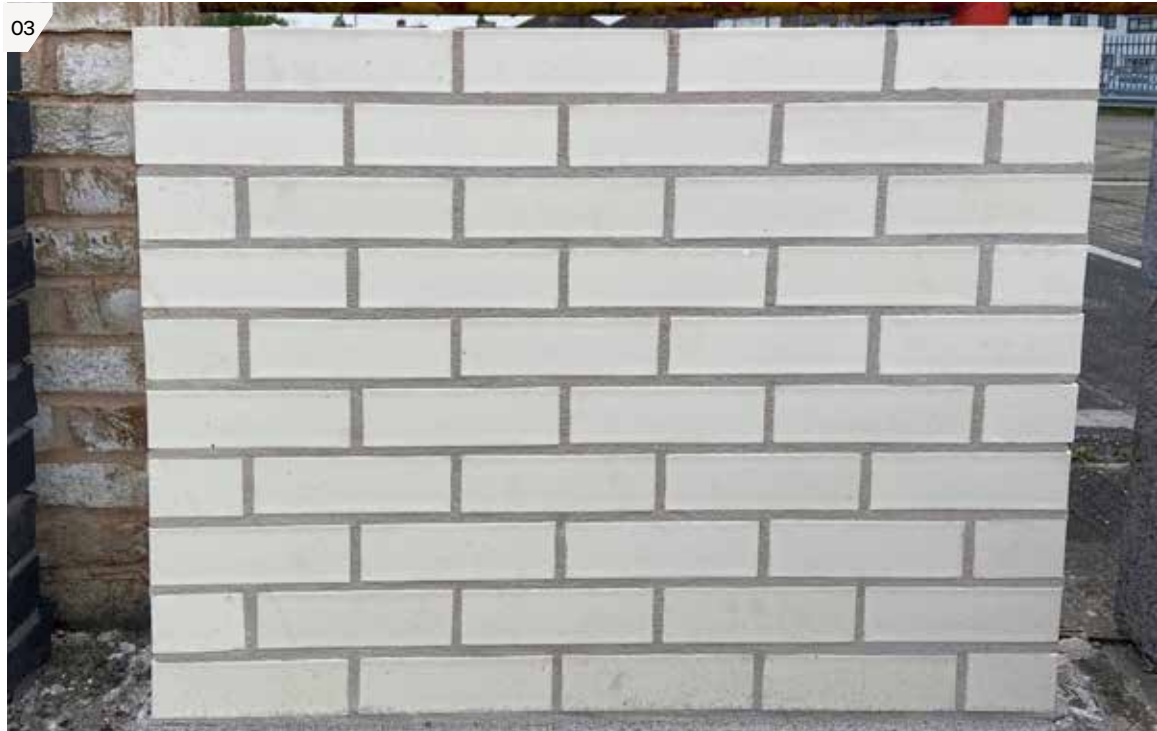


Cladding



- Key
- 01. ALT-301 & BRK-101 Red restoration brick against existing facade
 - 02. Existing facade close up
 - 03. BRK-101 Red restoration brick sample
 - 04. BRK-101 Red restoration brick sample close up

Cladding



- Key
- 01. BRK-103 Black brick sample
 - 02. BRK-103 Black brick sample close up
 - 03. BRK-102 Buff brick sample
 - 04. BRK-102 Buff brick sample close up

Cladding



- Key
- 01. BRK-103 Black brick
 - 02. BRK-102 Buff brick
 - 03. BRK-101 Red brick
 - 04. EWS-702 Aluminium cladding and frame
DRS-205 Aluminium clad metal door finish
DRS-803 Metal frame aluminium clad riser door finish
AM-101 Aluminium capping / coping

Cladding



- Key
- 01. GL-102 Retail glazing and framing
 - 02. EWS-705 Backpainted glazing and framing
 - 03. EWS-120 Retail glazing and framing
 - 04. GL-201 Aluminium spandrel panel
 - 05. EWS-701 - Glazed in louvres

Windows and Glazing



- Key
- 01. EWS-205 Residential glazing and framing
 - 02. EWS-205 Residential glazing and framing
 - 03. EWS-201 Residential glazing and steel framing EI90 - colour and approximate appearance only

Windows and Glazing



- Key
- 01. GL-101 FR90 Glazing
 - 02. GL-101 FR90 Glazing
 - 02 DG3 - Frosted glazing to residential bathrooms

Doors



Key

01. DRS-205 - External aluminium door

Miscellaneous

Key

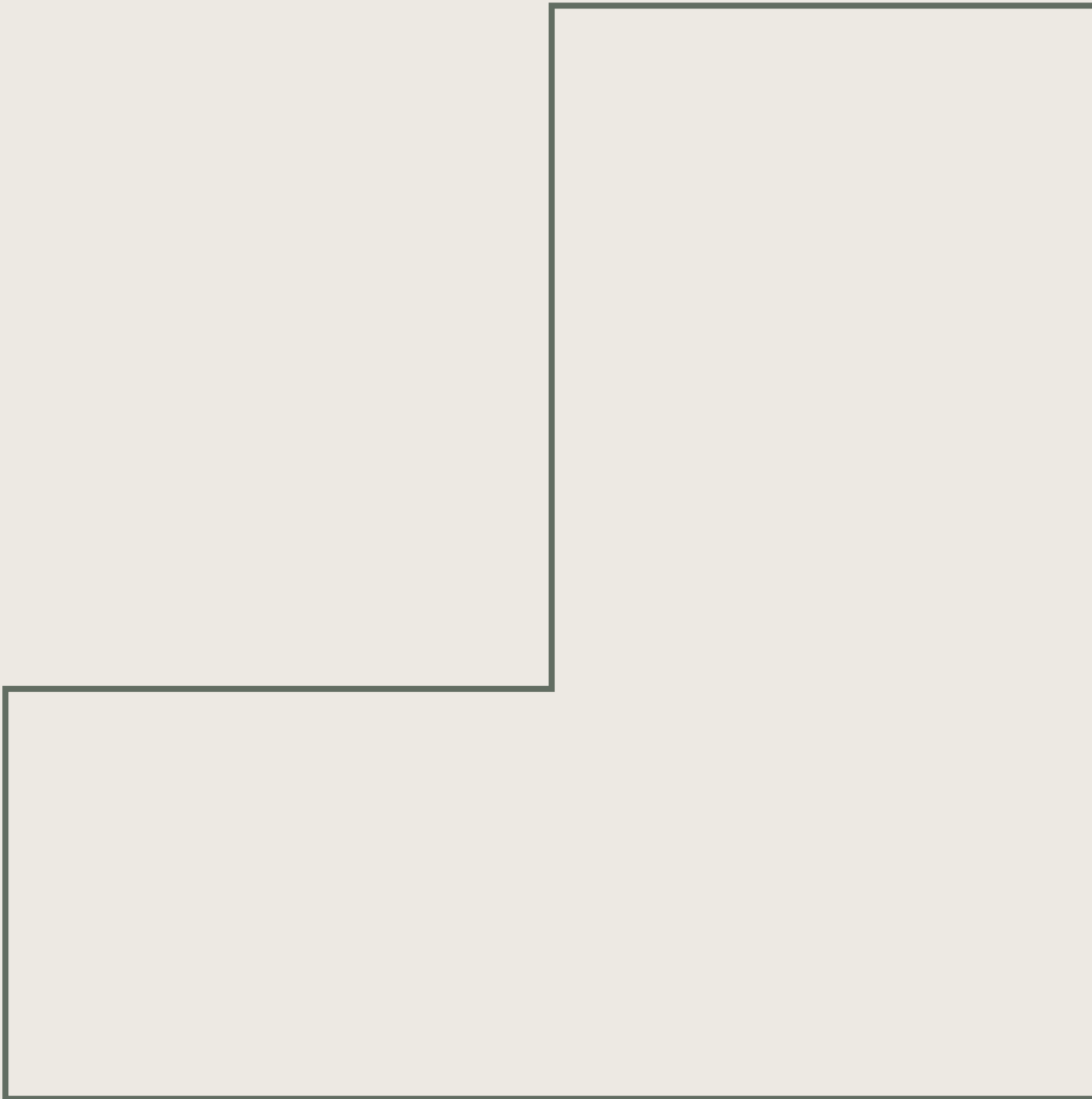
- 01. BAL-105 - External metal balustrade and handrail
- 02 BAL-105 - External metal balustrade and handrail - side on



Miscellaneous



- Key
-
- 01. CON-401 - Precast concrete coping
 - 02. CON-401 - Precast concrete coping



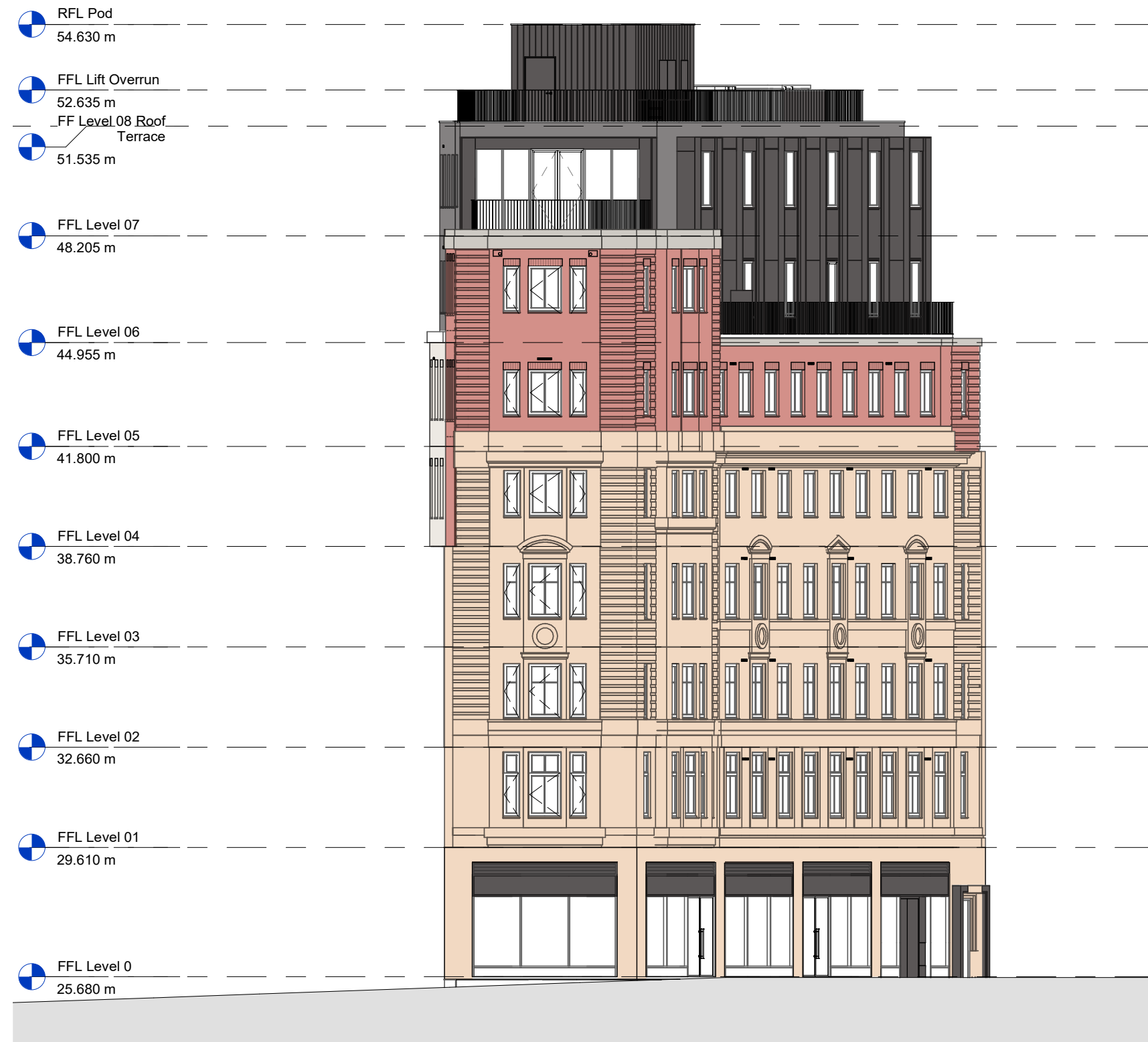
3.0

Material Locations







North Elevation



East Elevation



Key

-  **ALT-301** Retained facade to be cleaned and made good
-  **BRK-101** Red brick matching retained facade
-  **BRK-103** Black brick
-  **CON-401** Precast concrete coping
-  **EWS-702** Aluminium cladding and frame
- DRS-215** Aluminium clad metal door
- DRS-205** Aluminium clad metal door finish
- DRS-802** Metal frame aluminium dry riser door
- DRS-803** Metal frame aluminium clad riser door finish
- AM-101** Aluminium capping / coping
-  Frosted glass

South Elevation

Key

ALT-301 Retained facade to be cleaned and made good

BRK-101 Red brick matching retained facade

BRK-103 Black brick

CON-401 Precast concrete coping

EWS-702 Aluminium cladding and frame

DRS-215 Aluminium clad metal door

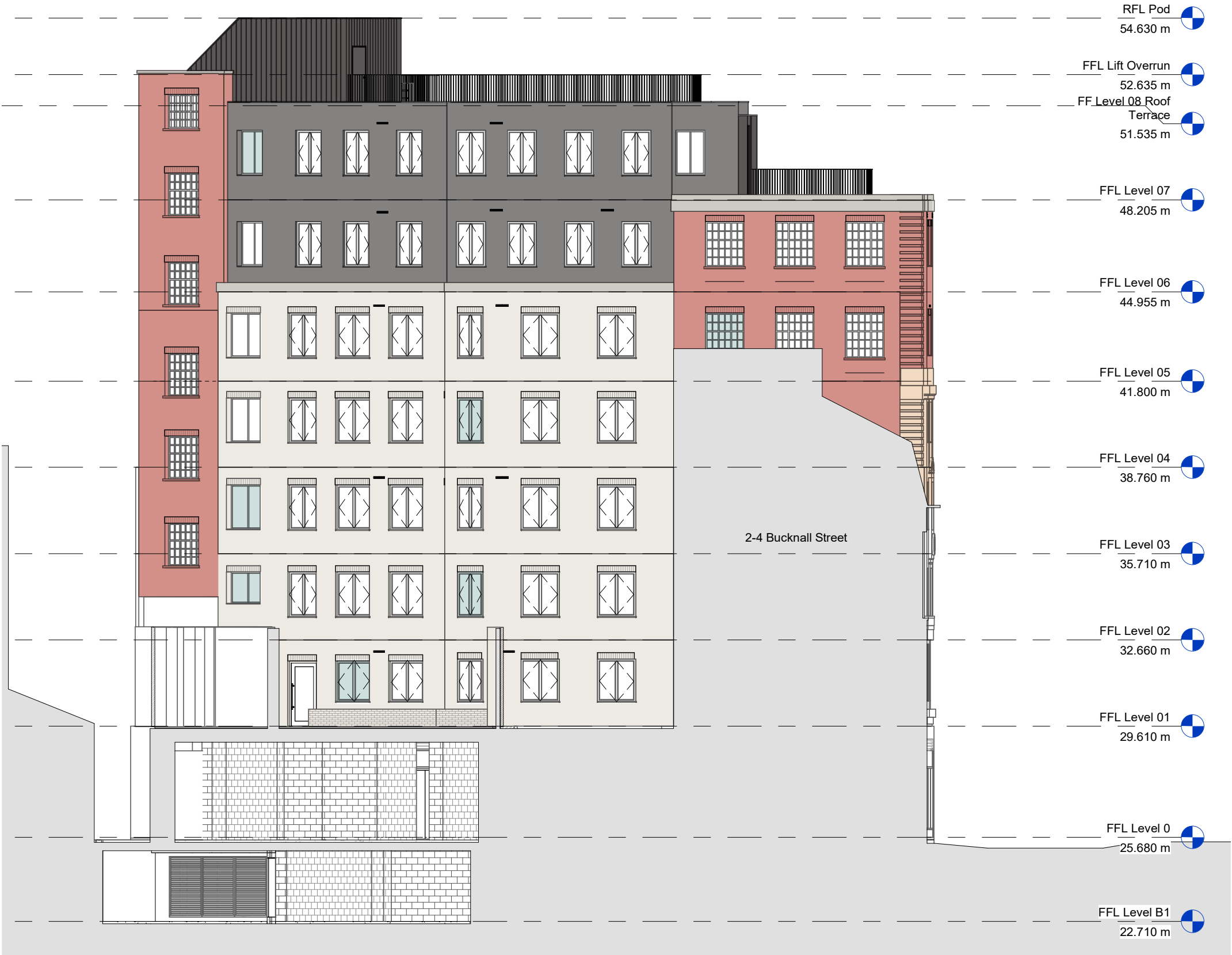
DRS-205 Aluminium clad metal door finish

DRS-802 Metal frame aluminium dry riser door

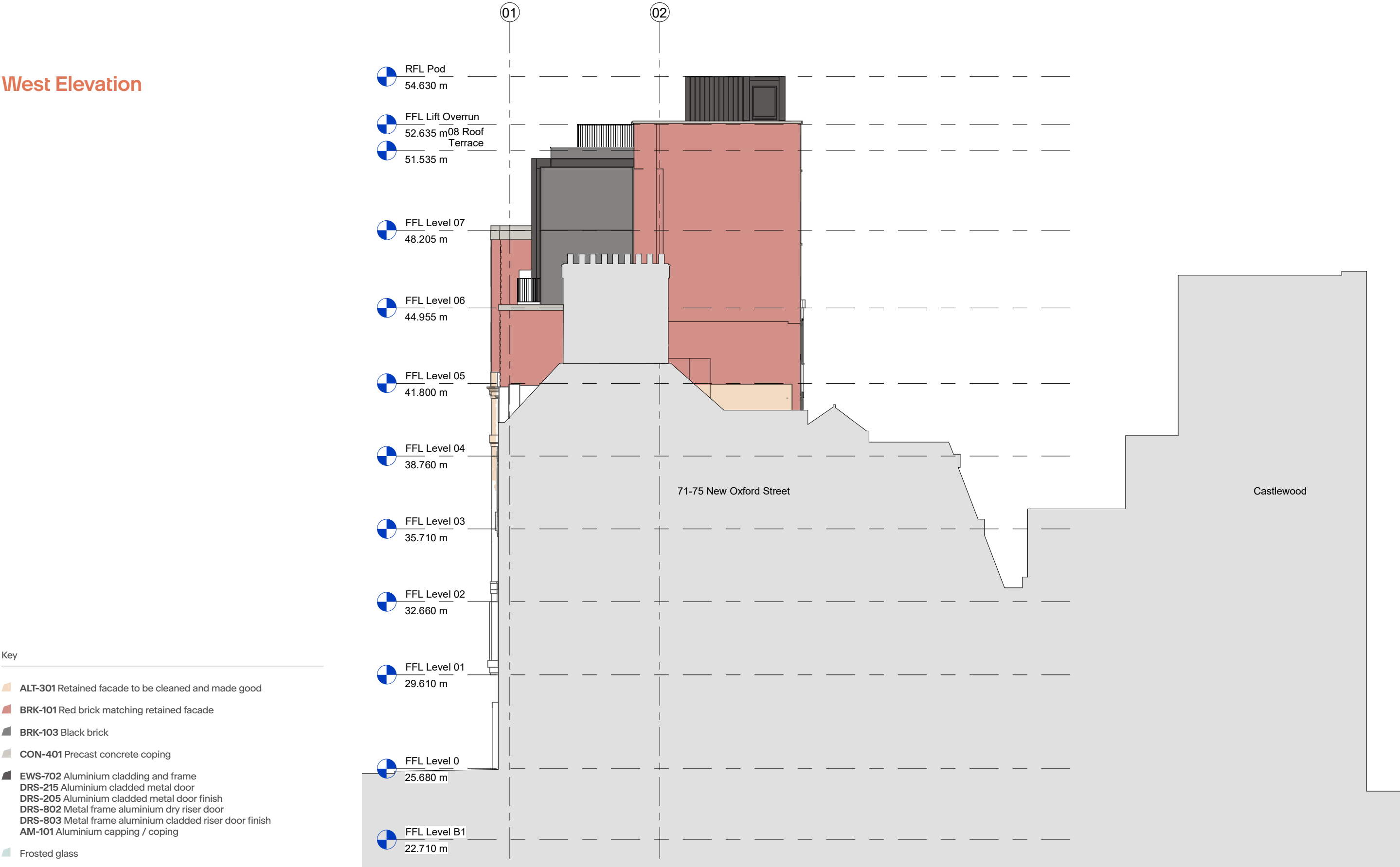
DRS-803 Metal frame aluminium clad riser door finish

AM-101 Aluminium capping / coping

Frosted glass



West Elevation



—
Apt
235 St John Street
London EC1V 4NG

—
T. +44 (0)20 7419 3500
E. mail@apt.london
W. www.apt.london