

# 7.4 PROPOSED EASTERN MEWS

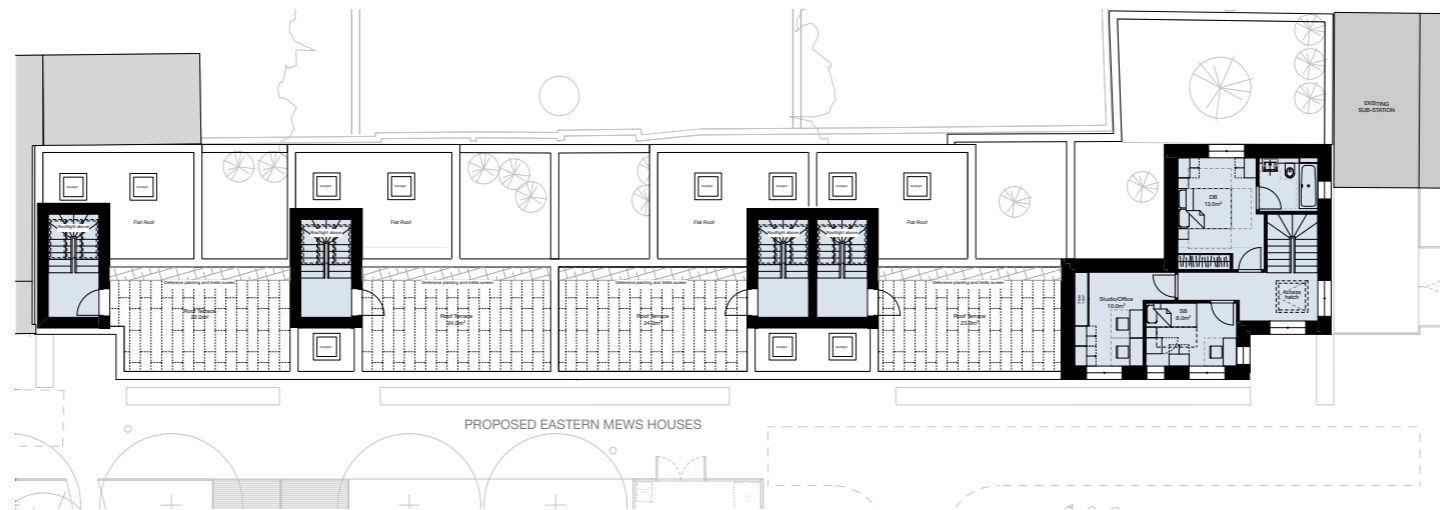
## EASTERN MEWS PLANS

The Eastern Mews provide 5 terraced houses for private market sale. Four of these are two-storey and one has three storeys. They all have private courtyards, and the larger three-storey house also has a garden. Stair roof pop-ups lead to roof terraces.

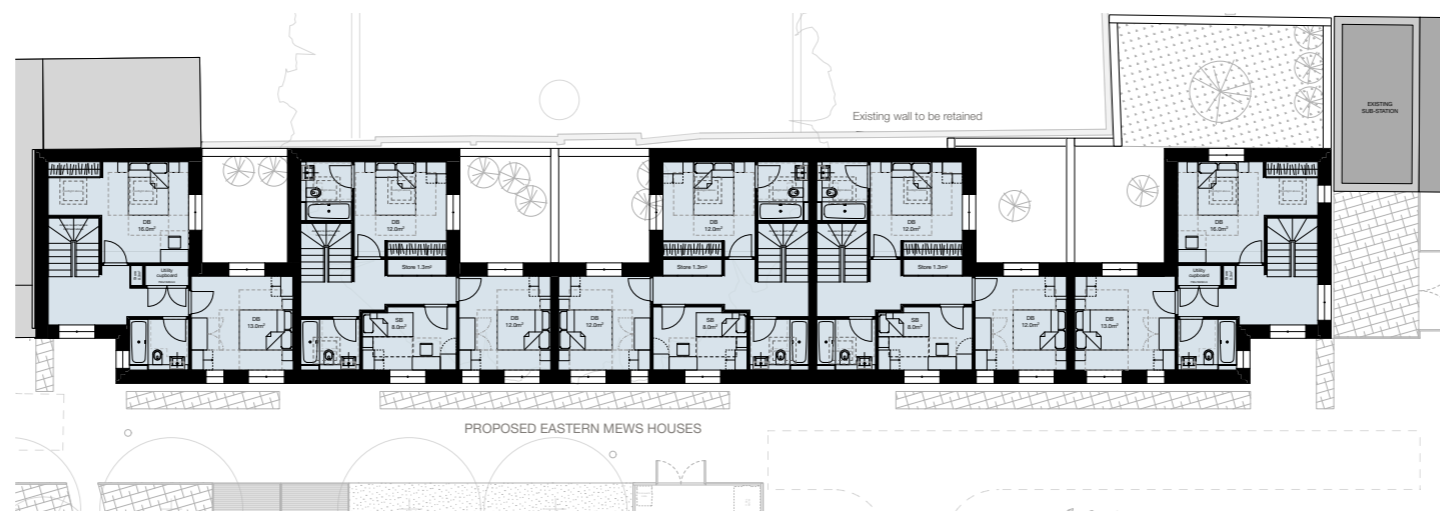
These include:

- 1x 2B4P house
- 3x 3B5P houses
- 1x 4B7P house

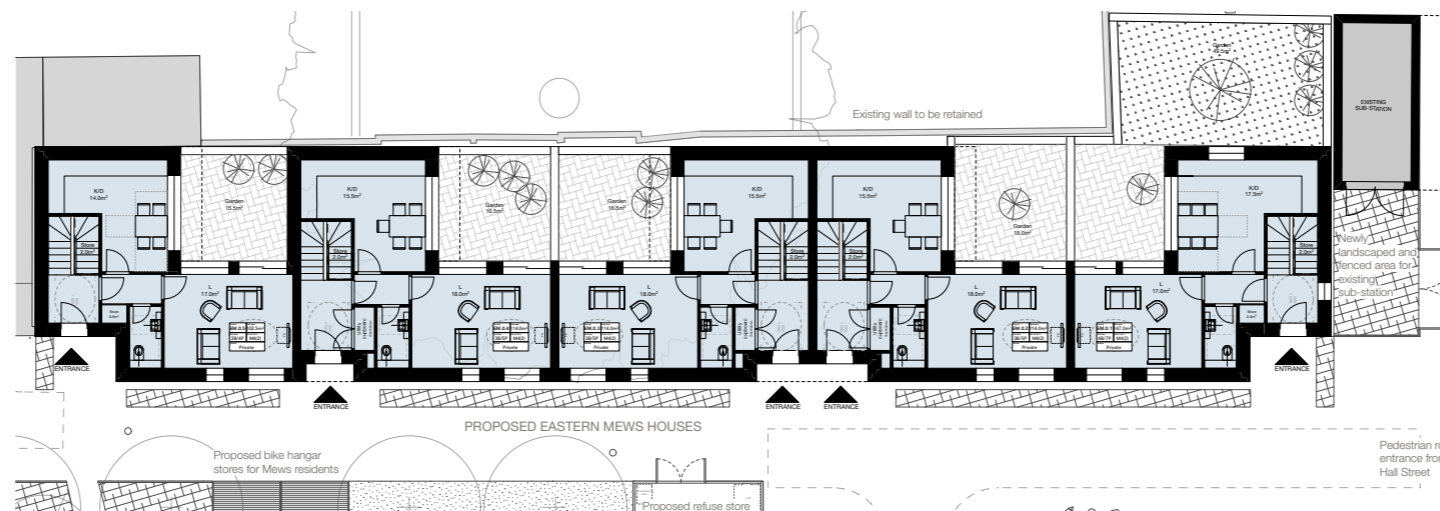
Access to these will be from Orde Hall Street, and together with the Western Mews will create a new street lined with trees.



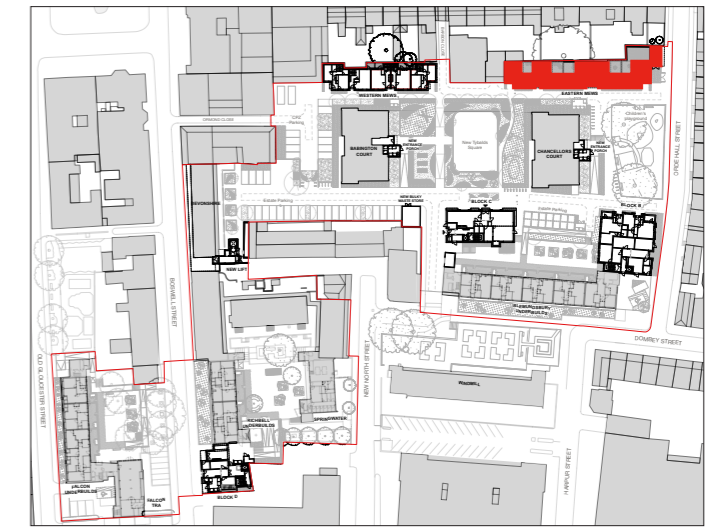
SECOND FLOOR



FIRST FLOOR



GROUND FLOOR



KEY



Birds eye view from site model



Boswell Street view from 3D model

# 7.4 PROPOSED EASTERN MEWS

## EASTERN MEWS SECTION

The Eastern Mews have been designed to a very high standard. Each house has its own private courtyard and south-facing roof terrace. Generous floor to ceiling heights of c.2650mm and daylight sunlight qualities as per all the other blocks.



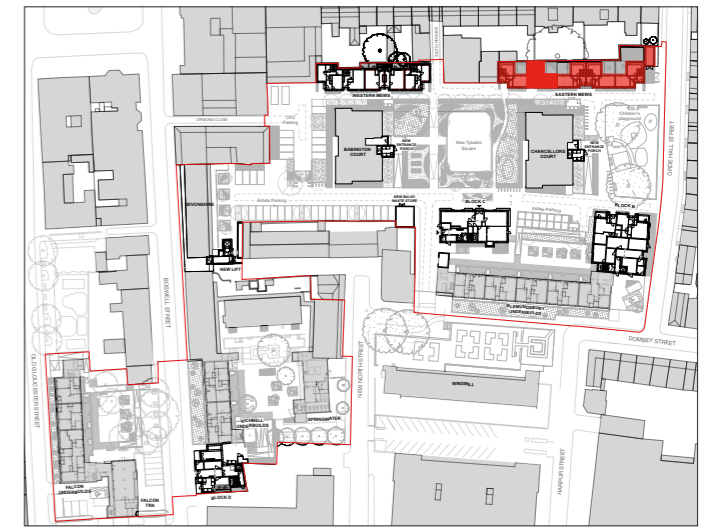
LONG SECTION

# 7.4 PROPOSED EASTERN MEWS

## EASTERN MEWS TYPICAL SECTIONS

Having both roof terraces and gardens allows these houses to be enjoyed in their fullness, with a lot of daylight coming in, and a variety of spaces at the resident's disposal.

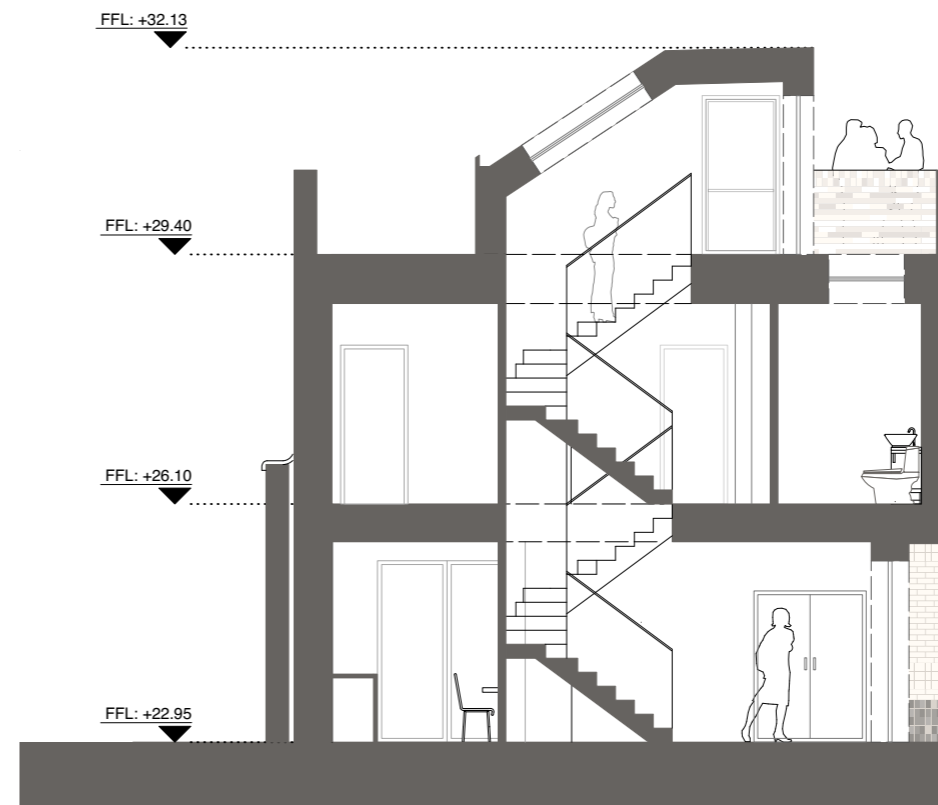
The sloping nature of the zinc stair pop-ups mean less visual impact to the existing residents on Great Ormond Street.



KEY



TYPICAL MEWS HOUSE SECTION B-B



TYPICAL MEWS HOUSE SECTION C-C

